



DigiCube

What to specify...

1. Pre-filter


2. Main filter

3. Interfacing Kit

Digikey Fume Extraction

Voltage	120V ±10%		
Vacuum Control	072190		
Wattage	0.107 kW		
Frequency	50 Hz / 60 Hz		
Cabinet height	365 mm		
Cabinet width (not inc hose)	290 mm		
Cabinet depth (not inc hose)	282 mm		
Cabinet weight (inc filters)	17 Kg		
Construction	Precision engineered units. High performance continuous run brushless motors. Quick and simple to relocate.		


1 Pre-filter Pad



Options: F5

Code: 200225 (Pack of 4)

2 Main filter



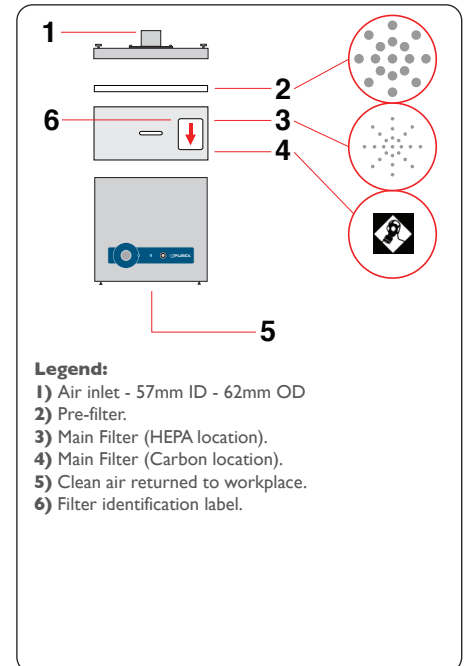
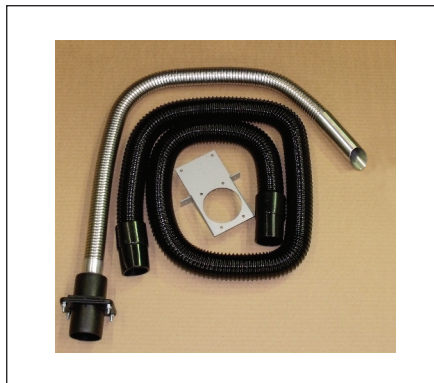
Options: HEPA/Chemical (std)

Code: 110536



Single arm system supplied with:
 1 x Filter + pre-filter pad
 1 x 51mm x 2m flexible hose [black]
 2 x Connecting cuffs [black]
 1 x Screwed bracket
 1 x 38mm stainless steel flexible arm and valve + 38mm pen nib nozzle

Code:
100294



Controls

Visual and Audible Filter Blocked Warning

Alerts the operator when a filter starts to block so that a replacement filter can be acquired and downtime can be avoided.

LED Filter Status

Green = Filter OK
Yellow = Filter nearly full
Red = Filter full, replacement required

System Features...

- Automatic electronic flow control - maintains a constant extraction rate even as the filter blocks
- Adjustable airflow
- VariColour filter blocked warning system
- Low capital and running costs
- Quick change pre-filters deliver longer filter life
- Submicronic (HEPA) filtration removes 99.997% of particles down to 0.3 microns
- Activated carbon filtration removes harmful gas
- Simple to install and quiet in operation
- Easy to relocate

Includes:

- 1 x Main filter
- 1 x Pre-filter pad
- 1 x Arm Kit
- 1 x Power cable

X-ON Electronics

Largest Supplier of Electrical and Electronic Components

Click to view similar products for [easy braid manufacturer](#):

Other Similar products are found below :

[EB41D2120](#) [ETZ-KIT-1](#) [SHP-PM](#) [Q-A-100](#) [OS-E-100](#) [OS-A-100](#) [S-B-5AS](#) [OS-E-25](#) [S2626-O-T](#) [OS-E-10AS](#) [S-E-100](#) [Q-B-100](#) [S-A-100](#)
[Q-D-100](#) [S3030R-O-T](#) [Q-E-10AS](#) [Q-B-25](#) [Q-E-25](#) [LF-A-5AS](#) [Q-A-25](#) [Q-A-10AS](#) [Q-E-100](#) [LF-E-5AS](#) [S-B-100](#) [S2235-O-T](#) [OS-D-100](#) [LF-](#)
[B-5AS](#) [Q-A-5AS](#) [S-A-10AS](#) [S-D-10AS](#) [LF-D-5AS](#) [LF-C-10AS](#) [S-B-10AS](#) [LF-D-10AS](#) [Q-D-10AS](#) [S-C-5AS](#) [OS-D-5AS](#) [Q-E-5AS](#) [OS-C-](#)
[100](#) [OS-B-25](#) [S-D-5AS](#) [Q-D-25](#) [Q-C-100](#) [OS-B-100](#) [S-E-5AS](#) [OS-D-10AS](#) [Q-C-25](#) [S-E-10AS](#) [OS-E-5AS](#) [Q-B-10AS](#)