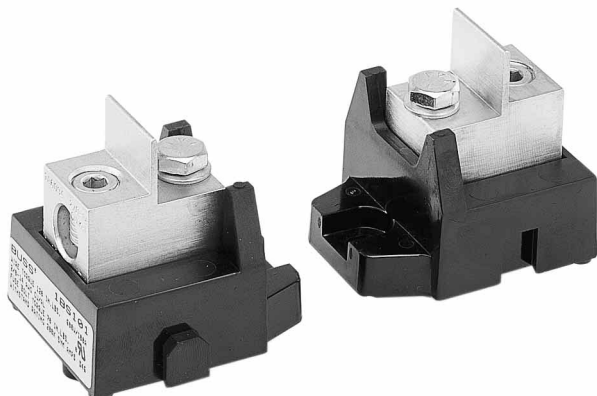


Modular Fuseblocks

0-600V, 100 Amps

1BS101

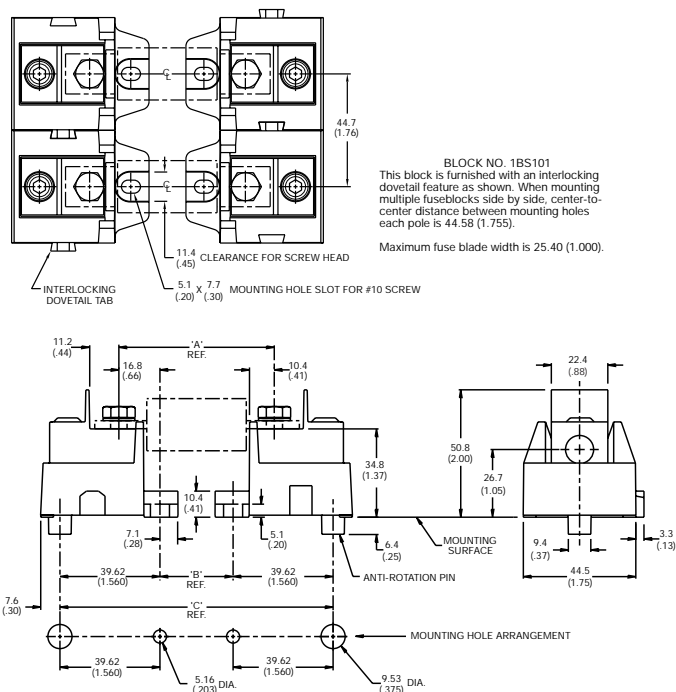


- Catalog Symbol:** 1BS101
- Voltage Rating:** 600V
- Current Rating:** 100A
- Base:** Molded black phenolic, 150°C
- Mounting Studs:**
Zinc-plated steel
1/4" - 20 x 1/2" hex head bolt
- Nut:** Zinc-plated steel
- Washer:** Zinc-plated steel
1/4" Belleville washer
- Connector:** Tin-plated aluminum
- Wire Range:** Single #2/0 through single #14AWG
- Wire Types:** Copper or aluminum
Stranded or solid
- Withstand Rating:**
200,000A RMS. SYM. or the interrupting rating of the fuse used, whichever is smaller.
- Dovetail Interlock:**
Dovetail interlock feature on each side of the base allows mounting multiple poles adjacent to one another.
- Torque Requirements:**
Conductor Set Screw: 120 lbs-in
Fuse Mounting Bolt: 70 lbs-in
- Agency Approvals:**
U.L. Recognized, Guide No. IZLT2, File No. E14853
CSA Certified, Class 6225-01, File 47235

Mounting Dimensions mm (inches)

Catalog No.	"A"	"B"	"C"
FWA 70A-100A	49.3 (1.94)	16.0 (0.63)	95.4 (3.75)
FWH 35B-60B	58.9 (2.32)	25.6 (1.01)	104.9 (4.13)
FWH 70B-100B	72.4 (2.85)	39.1 (1.54)	118.3 (4.66)
FWX 35A-60A	59.4 (2.34)	26.1 (1.03)	105.4 (4.15)
FWX 70A-100A	59.7 (2.35)	26.4 (1.04)	105.6 (4.16)
KAC 1-30	63.5 (2.50)	30.2 (1.19)	109.4 (4.31)
KAC 35-60	88.9 (3.50)	55.6 (2.19)	134.8 (5.31)
KAC 70-100	105.7 (4.16)	72.3 (2.85)	151.6 (5.97)
KBC 35-60	88.9 (3.50)	55.6 (2.19)	134.8 (5.31)
KBC 70-100	93.0 (3.66)	59.6 (2.35)	138.9 (5.47)
LPJ 70SP-100SP	95.5 (3.76)	62.2 (2.45)	141.4 (5.57)
JJS 70-100	59.9 (2.36)	26.6 (1.05)	105.9 (4.17)
JKS 70-100	96.3 (3.79)	62.9 (2.48)	142.2 (5.60)
80-100L14C	89.9 (3.54)	56.6 (2.23)	135.8 (5.35)
80-100L09C	112.0 (4.41)	78.7 (3.10)	157.9 (6.22)

Dimensions



CE logo denotes compliance with European Union Low Voltage Directive (50-1000 Vac, 75-1500 Vdc). Refer to BIF document #8002 or contact Bussmann Application Engineering at 314-527-1270 for more information.

The only controlled copy of this BIF document is the electronic read-only version located on the Bussmann Network Drive. All other copies of this BIF document are by definition uncontrolled. This bulletin is intended to clearly present comprehensive product data and provide technical information that will help the end user with design applications. Bussmann reserves the right, without notice, to change design or construction of any products and to discontinue or limit distribution of any products. Bussmann also reserves the right to change or update, without notice, any technical information contained in this bulletin. Once a product has been selected, it should be tested by the user in all possible applications.

X-ON Electronics

Largest Supplier of Electrical and Electronic Components

Click to view similar products for [Fuse Holder](#) category:

Click to view products by [Eaton](#) manufacturer:

Other Similar products are found below :

[570-290-741P40](#) [570-290-751P40](#) [020417G](#) [020418E](#) [6R30A1B](#) [F600A3B](#) [80910030](#) [8601.2020](#) [G15A2SPQ](#) [9-3557-GP REV A](#) [HDJ-B](#)
[R6J30A3S](#) [HFH-1](#) [RF30A1S](#) [RF30A2B](#) [RF30A3SP](#) [15600-08-10](#) [BK/FHN19G](#) [BK/HHM](#) [BK/HKP-CCHH](#) [BK/HKP-JJ](#) [BK/HTJ-LES-](#)
[FUSE](#) [HMG-241](#) [HTJ-LES-FUSE](#) [C4044-1](#) [2086-1](#) [2193](#) [2602](#) [2650](#) [178.000100](#) [FHN31G1](#) [T30A2B](#) [G4PB8](#) [2660](#) [2799](#) [CQ-209V](#) [HKP-](#)
[CCHH](#) [R6F30A2S](#) [341001A](#) [345621A](#) [CVRMCC](#) [4202](#) [4407](#) [4408](#) [4413](#) [4423](#) [4532](#) [4537](#) [TSD1404-12](#) [BK/FHN31G1](#)