

Stud-mounted fuses



Catalog symbol: ACK-__

Description:

Bussmann® series stud-mounted fuse.

Specifications:

Ratings

- Volts - 130 Vdc (or less)
 - 130 Vdc - (10-100 A)
 - 72 Vdc - (120-200 A)
 - 48 Vdc - (225-300 A)
 - 80 Vdc - (400 A)
- Amps - 10-400 A
- Interrupting rating - 10 kA

Agency information

- UL® Recognized 15-300A, Guide JFHR2, File E56412

Features:

- These fuses avoid needless openings from starting currents or surges
- A fuse link which operates only on very high overloads or short-circuits
- Thermal cutout functions on low overloads – the thermal cutout cannot operate quickly at any load, hence long timelag is obtained on high overloads of short duration
- This long time-lag also makes it unnecessary to use extra large size or over-size fuses

| Catalog numbers (amps) | | | |
|------------------------|--------|---------|---------|
| ACK-10 | ACK-40 | ACK-100 | ACK-200 |
| ACK-15 | ACK-50 | ACK-120 | ACK-225 |
| ACK-20 | ACK-60 | ACK-140 | ACK-250 |
| ACK-25 | ACK-70 | ACK-150 | ACK-300 |
| ACK-30 | ACK-75 | ACK-160 | ACK-400 |
| ACK-35 | ACK-80 | ACK-175 | — |

Test specifications

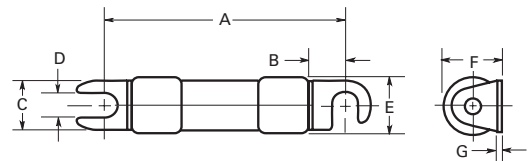
| Fuse | Load | Opening time |
|------|------|--------------|
| ACK | 200% | 100 Seconds* |
| | 300% | 35 Seconds* |
| | 500% | 13 Seconds* |

*Approximately.

Recommended fuse blocks:

| Catalog number | Block number | Catalog number | Block number |
|----------------|--------------|----------------|--------------|
| ACK 10-30 | 4228 | ACK 120-200 | 3569 |
| ACK 35-60 | 3411 | ACK 225-400 | 3578 |
| ACK 70-100 | 2322 | | |

Dimensions - in (mm):



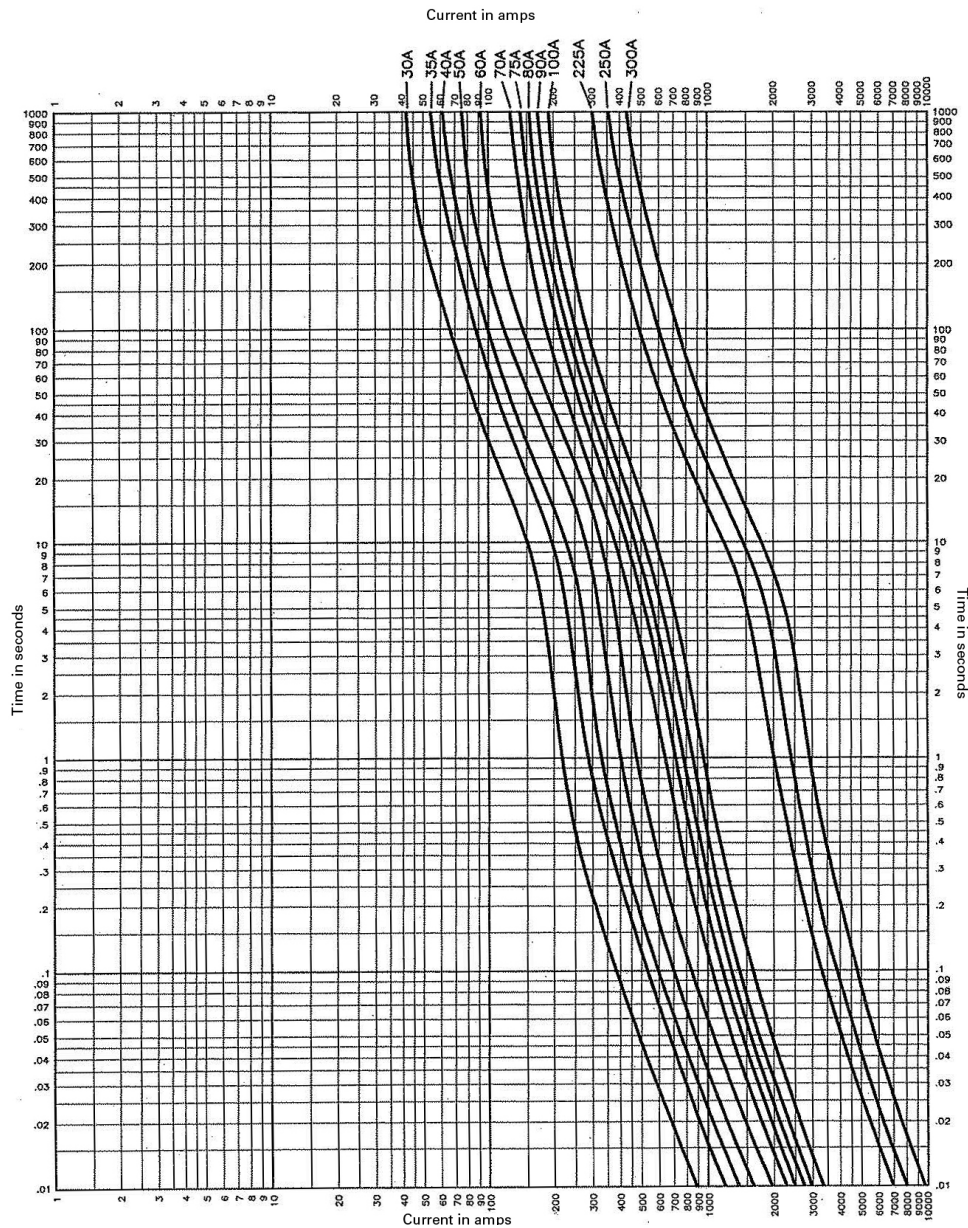
| Catalog number | Dimensions in inches and (mm) | | | D | E | F | G |
|----------------|-------------------------------|-------------------|-------------------|------------------|-------------------|-------------------|------------------|
| | A | B | C | | | | |
| ACK 10-30 | 2.5" (63.5) | 0.375" (9.53) | 0.500" (12.70) | 0.250" (6.35) | 0.557" (14.15) | 0.588" (14.94) | 0.031" (0.79) |
| ACK 35-60 | 3.0" (76.20) | 0.470" (11.94) | 0.685" (17.40) | 0.344" (8.74) | 0.812" (20.63) | 0.860" (21.84) | 0.051" (1.30) |
| ACK 70-100 | 3.5" (88.90) | 0.547" (13.89) | 0.750" (19.05) | 0.312" (7.92) | 1.062" (26.98) | 1.15" (29.21) | 0.050" (1.27) |
| ACK 120-200 | 3.750" (95.25) | 0.750" (19.05) | 0.750" (19.05) | 0.375" (9.52) | 1.062" (26.98) | 1.15" (29.21) | 0.050" (1.27) |
| ACK 225-400 | 3.750" (95.25) | 0.610" (15.49) | 0.750" (19.05) | 0.312" (7.92) | 1.062" (1.062) | 1.125" (28.58) | 0.050" (1.27) |

Note: 10-60 amp fuses use brass terminals and ferrules.
70-400 amp fuses use copper terminals and ferrules.

| Catalog symbol | Dimensions in Inches and (mm) | | | | | | |
|----------------|-------------------------------|-------------------|-------------------|------------------|-------------------|-------------------|------------------|
| | A | B | C | D | E | F | G |
| ACK 10-30 | 2.5" (63.5) | 0.375" (9.53) | 0.500" (12.70) | 0.250" (6.35) | 0.557" (14.15) | 0.588" (14.94) | 0.031" (0.79) |
| ACK 35-60 | 3.0" (76.20) | 0.470" (11.94) | 0.685" (17.40) | 0.344" (8.74) | 0.812" (20.63) | 0.860" (21.84) | 0.051" (1.30) |
| ACK 70-100 | 3.5" (88.90) | 0.547" (13.89) | 0.750" (19.05) | 0.312" (7.92) | 1.062" (26.98) | 1.125" (28.58) | 0.050" (1.27) |
| ACK 120-200 | 3.750" (95.25) | 0.750" (19.05) | 0.750" (19.05) | 0.375" (9.52) | 1.062" (26.98) | 1.15" (29.21) | 0.050" (1.27) |
| ACK 225-400 | 3.750" (95.25) | 0.610" (15.49) | 0.750" (19.05) | 0.312" (7.92) | 1.062" (26.98) | 1.125" (28.58) | 0.050" (1.27) |

Note: 10-60 amp fuses use brass terminals and ferrules. 70-400 amp fuses use copper terminals and ferrules.

Time-current curves – average melt



The only controlled copy of this data sheet is the electronic read-only version located on the Eaton network drive. All other copies of this document are by definition uncontrolled. This bulletin is intended to clearly present comprehensive product data and provide technical information that will help the end user with design applications. Eaton reserves the right, without notice, to change design or construction of any products and to discontinue or limit distribution of any products. Eaton also reserves the right to change or update, without notice, any technical information contained in this bulletin. Once a product has been selected, it should be tested by the user in all possible applications.

Eaton
1000 Eaton Boulevard
Cleveland, OH 44122
United States
Eaton.com

Bussmann Division
114 Old State Road
Ellisville, MO 63021
United States
Eaton.com/bussmannseries

© 2017 Eaton
All Rights Reserved
Printed in USA
Publication No. 1040 – SB98107
June 2017

Eaton and Bussmann are valuable trademarks of Eaton in the US and other countries. You are not permitted to use the Eaton trademarks without prior written consent of Eaton.

UL is a registered trademark of the Underwriters Laboratories, Inc.

For Eaton's Bussmann series product information, call **1-855-287-7626** or visit: **Eaton.com/bussmannseries**

Follow us on social media to get the latest product and support information.



X-ON Electronics

Largest Supplier of Electrical and Electronic Components

Click to view similar products for [Fuse Holder](#) category:

Click to view products by [Eaton](#) manufacturer:

Other Similar products are found below :

[570-290-741P40](#) [570-290-751P40](#) [020417G](#) [020418E](#) [6R30A1B](#) [F600A3B](#) [80910030](#) [8601.2020](#) [G15A2SPQ](#) [9-3557-GP REV A](#) [HDJ-B](#)
[R6J30A3S](#) [HFH-1](#) [RF30A1S](#) [RF30A2B](#) [RF30A3SP](#) [15600-08-10](#) [BK/FHN19G](#) [BK/HHM](#) [BK/HKP-CCHH](#) [BK/HKP-JJ](#) [BK/HTJ-LES-](#)
[FUSE](#) [HMG-241](#) [HTJ-LES-FUSE](#) [C4044-1](#) [2086-1](#) [2193](#) [2602](#) [2650](#) [178.000100](#) [FHN31G1](#) [T30A2B](#) [G4PB8](#) [2660](#) [2799](#) [CQ-209V](#) [HKP-](#)
[CCHH](#) [R6F30A2S](#) [341001A](#) [345621A](#) [CVRMCC](#) [4202](#) [4407](#) [4408](#) [4413](#) [4423](#) [4532](#) [4537](#) [TSD1404-12](#) [BK/FHN31G1](#)