

LETTERS IN CIRCLE INDICATE CHANGE FROM PRECEDING PRINT  
 (K) REVISED & REDRAWN  
 PAGE 1 OF 2

56 J

CONFORMING TO THE INFORMATION CONTAINED IN THIS DOCUMENT IS THE PROPERTY OF COOPER INDUSTRIES, INC. IT IS NOT TO BE REPRODUCED OR TRANSMITTED IN ANY FORM OR BY ANY MEANS, ELECTRONIC OR MECHANICAL, INCLUDING PHOTOCOPYING, RECORDING, OR BY ANY INFORMATION STORAGE AND RETRIEVAL SYSTEM, WITHOUT PERMISSION IN WRITING FROM COOPER INDUSTRIES, INC. UNAUTHORIZED REPRODUCTION OR USE OF THE INFORMATION CONTAINED HEREIN FOR ANY PURPOSE OTHER THAN THAT AUTHORIZED BY COOPER INDUSTRIES, INC. IS PROHIBITED. PERMISSION TO REPRODUCE OR TRANSMIT THIS DOCUMENT OR THE INFORMATION CONTAINED HEREIN IN ANY FORM OR BY ANY MEANS, ELECTRONIC OR MECHANICAL, INCLUDING PHOTOCOPYING, RECORDING, OR BY ANY INFORMATION STORAGE AND RETRIEVAL SYSTEM, WITHOUT PERMISSION IN WRITING FROM COOPER INDUSTRIES, INC. IS FORWARDED UPON REQUEST.

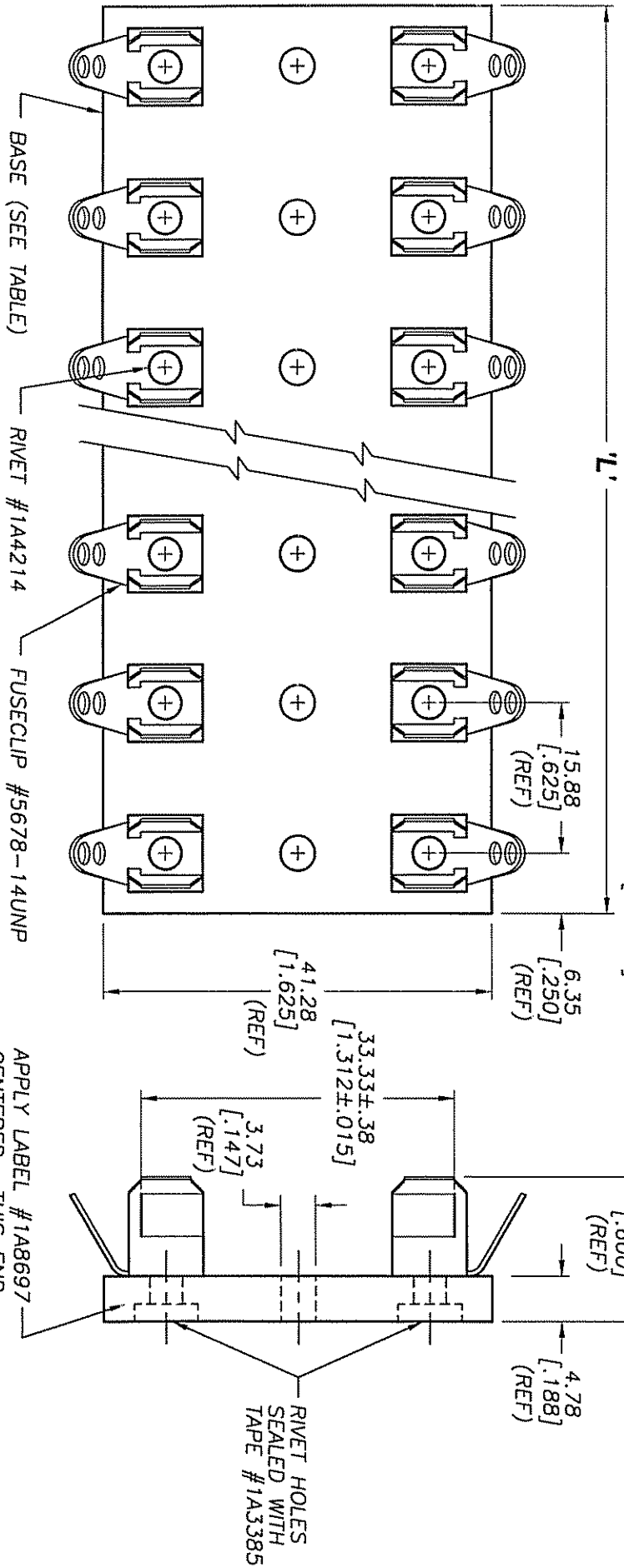
COOPER Bussmann  
 56 J

INDICATES CRITICAL DIMENSION OR FEATURE

UNLESS OTHERWISE SPECIFIED TOLERANCES TO BE:  
 METRIC ±.13mm  
 INCHES ±.005"  
 ANGULAR ±2°

THIRD ANGLE PROJECTION

56 J



PACKAGING SPECIFICATION #1P1063

PART NO.	NO. OF POLES	BASE P/N	'L' LENGTH (REF)
3823-1	1	6623-1	12.70 [.500]
3823-2	2	6623-2	28.58 [1.125]
3823-3	3	6623-3	44.45 [1.750]
3823-4	4	6623-4	60.33 [2.375]
3823-5	5	6623-5	76.20 [3.000]
3823-6	6	6623-6	92.08 [3.625]

PART NO.	NO. OF POLES	BASE P/N	'L' LENGTH (REF)
3823-7	7	6623-7	107.95 [4.250]
3823-8	8	6623-8	123.83 [4.875]
3823-9	9	6623-9	139.70 [5.500]
3823-10	10	6623-10	155.58 [6.125]
3823-12	12	6623-12	187.33 [7.375]

## X-ON Electronics

Largest Supplier of Electrical and Electronic Components

*Click to view similar products for [Supervisory Circuits](#) category:*

*Click to view products by [Eaton](#) manufacturer:*

Other Similar products are found below :

[NCP304LSQ38T1G](#) [NCP304LSQ42T1G](#) [NCP304LSQ43T1G](#) [NCP305LSQ11T1G](#) [NCP305LSQ16T1G](#) [NCP305LSQ17T1G](#)  
[NCP305LSQ18T1G](#) [NCP305LSQ24T1G](#) [NCP305LSQ25T1G](#) [NCP305LSQ29T1G](#) [NCP305LSQ31T1G](#) [NCP305LSQ32T1G](#)  
[NCP308MT250TBG](#) [NCP308SN300T1G](#) [NCP391FCALT2G](#) [NCV303LSN42T1G](#) [CAT1161LI-25-G](#) [CAT853STBI-T3](#) [CAT1026LI-30-G](#)  
[CAT1320LI-25-G](#) [CAT872-30ULGT3](#) [NCP304HSQ18T1G](#) [NCP304HSQ29T1G](#) [NCP304LSQ27T1G](#) [NCP304LSQ29T1G](#)  
[NCP304LSQ45T1G](#) [NCP305LSQ26T1G](#) [NCP305LSQ35T1G](#) [NCP305LSQ37T1G](#) [NCP308MT300TBG](#) [NCV300LSN36T1G](#)  
[NCV302LSN30T1G](#) [NCV303LSN16T1G](#) [NCV303LSN22T1G](#) [NCV303LSN27T1G](#) [NCV33161DMR2G](#) [TC54VN2402EMB713](#)  
[MCP1316T-44NE/OT](#) [MCP1316MT-45GE/OT](#) [MCP1316MT-23LI/OT](#) [MCP1316T-26LE/OT](#) [MAX8997EWW+](#) [MAX821RUS+T](#)  
[MAX6725AKASYD3-LF-T](#) [MAX809SEUR](#) [MAX6701LKA+](#) [MAX16126TCA+T](#) [MAX16046ATN+](#) [NCP303LSN09T2G](#)  
[NCP304LSQ20T1G](#)