

Bussmann series AD BS88 Centre bolted tags



Product description

A range of British standard fuse links specifically designed for the protection of general industrial applications e.g. power distribution, cable protection, motor protection.

Standard features

- Good peak let-through current limitation
- 1:1:6 Selective coordination ratio between 'minor' and 'major' fuse
- gG characteristics for cable protection and general purpose applications
- Power loss values within the limits of IEC 60269

Catalogue symbol

AD(Amps)

Technical data

Rated voltage:

- 550 V a.c. / 250 V d.c. (2 to 20 A)
- 500 V a.c. / 250 V d.c. (25 to 32 A)

Rated current: 2 to 32 A

Class of operation: gG

Breaking capacity:

- 80 kA at a.c. rated voltage
- 40 kA at 250 V d.c.

Standards/Approvals

- BS88
- IEC 60269
- Suitable for use in RoHS compliant applications

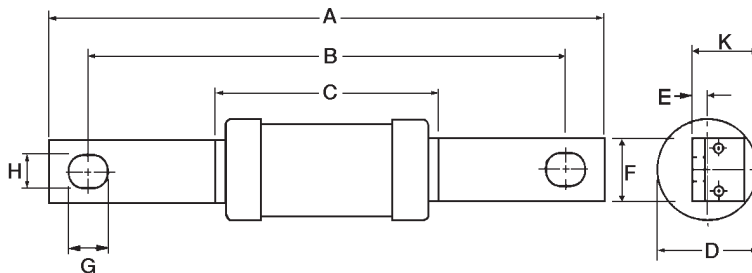
Packaging

MOQ 20

Table 1. Technical data

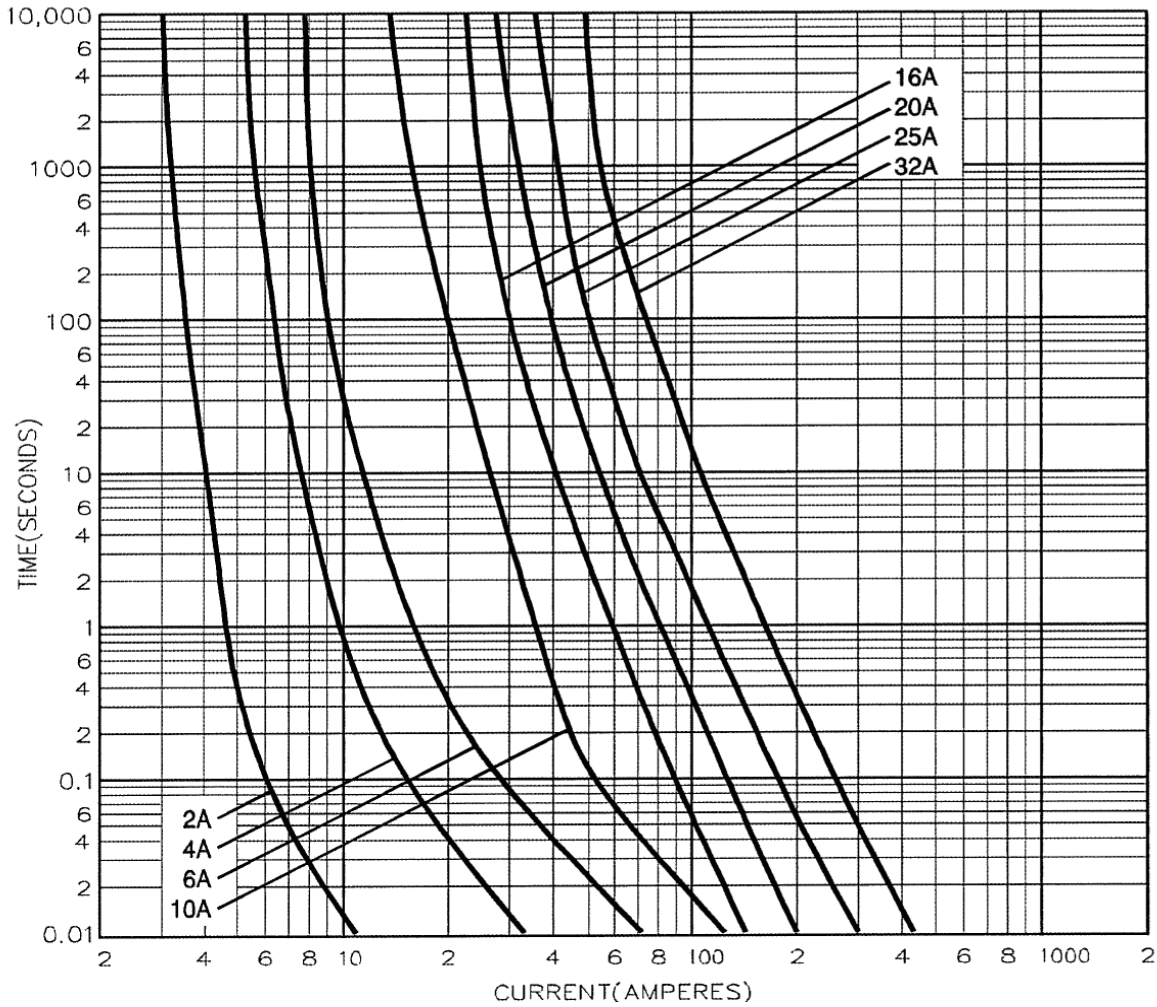
Catalogue number	Rated voltage	Rated current (Amps)	Breaking capacity	Energy integrals Pt (A ² S)			Watts loss (W)	Product class	Weight (grams)
				Pre-arcing	Total at 415 V a.c.	Total at 550 V a.c.			
AD2	550 V a.c./ 250 V d.c.	2	80 kA at 550 V a.c. / 40 kA at 250 V d.c.	1.2	3.1	3.8	1.2	gG	60
AD4		4		11	31	38	1.4		
AD6		6		32	90	125	1.8		
AD10		10		20	60	80	2.4		
AD16		16		85	240	320	2.9		
AD20		20		220	580	770	3.1		
AD25	500 V a.c./ 250 V d.c.	25	80 kA at 500 V a.c. / 40 kA at 250 V d.c.	500	1400	1850	3.2	gG	60
AD32		32		1000	2760	3700	3.5		

Dimensions - mm



Catalogue numbers	A	B	C	D	E	F	G	H	K
AD2-32	128.5	111	55	21	1.4	14.2	11.8	8.7	11.2

Time-current characteristic curve



Changes to the products, to the information contained in this document, and to prices are reserved; so are errors and omissions. Only order confirmations and technical documentation by Eaton is binding. Photos and pictures also do not warrant a specific layout or functionality. Their use in whatever form is subject to prior approval by Eaton. The same applies to Trademarks (especially Eaton, Moeller, and Cutler-Hammer). The Terms and Conditions of Eaton apply, as referenced on Eaton Internet pages and Eaton order confirmations.

Eaton
 EMEA Headquarters
 Route de la Longeraie 7
 1110 Morges, Switzerland
 Eaton.eu

© 2015 Eaton
 All Rights Reserved
 Publication No. 4111
 February 2015

X-ON Electronics

Largest Supplier of Electrical and Electronic Components

Click to view similar products for [Specialty Fuses](#) category:

Click to view products by [Eaton](#) manufacturer:

Other Similar products are found below :

[63NZ02GL](#) [80NH00GR-6](#) [FWP-32A14F](#) [12LCT](#) [ECF-1](#) [ECF-2](#) [ECF-3](#) [ECF-4](#) [170M3809D](#) [N-2-1/2](#) [N-3-2/10](#) [NITD2](#) [16D27SB](#) [16FC](#)
[170M1564D](#) [170M4241](#) [ESD63](#) [ABS-30](#) [ABS-8](#) [FWP-25A14FI](#) [FWP-80A22FI](#) [30CIF06](#) [32CMLC](#) [32NH00AM-6](#) [TDC180-2](#) [TPL-BL](#)
[TPS-5](#) [KLC40](#) [WKL](#) [NITD25](#) [04450080FX850](#) [NITD16](#) [LA60Q152](#) [LA60Q402](#) [ECF-5](#) [TDC180-10](#) [TDC180-7](#) [TPM-25](#) [3AG-312](#)
[16NHG000B](#) [170M3509](#) [DEO200](#) [DD200M250](#) [BP/S-6-1/4](#) [170M3510](#) [TPH-300](#) [EFS200](#) [170M0161](#) [170M6016](#) [BK/F02B-1/2A](#)