

# Stud-Mounted Fuses

## One-Time

ALS

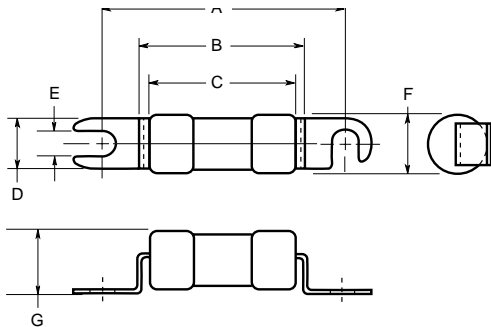


**Catalog Symbol:** ALS  
 One-Time, Stud-Mounted  
**Ampere Rating:** 100 to 600 Amperes  
**Voltage Rating:** 125 Volts or less  
**Agency Approvals:**  
 UL Recognized, JFHR2, E56412

**Electrical Ratings (Catalog Symbol and Amperes)**

125 Volts		
ALS-100	ALS-250	ALS-450
ALS-175	ALS-300	ALS-500
ALS-200	ALS-350	ALS-550
ALS-225	ALS-400	ALS-600

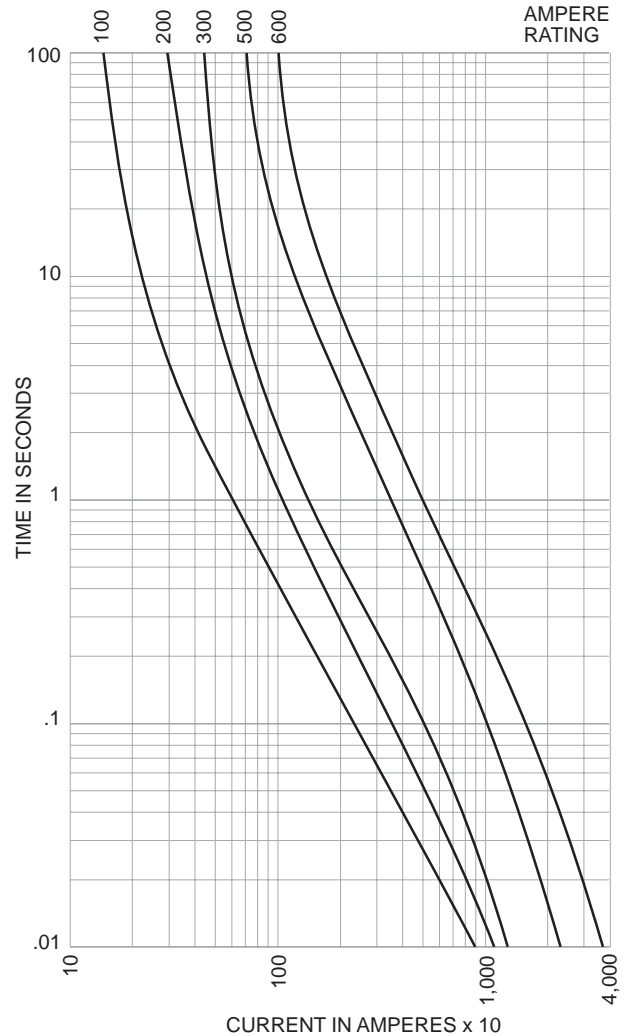
**Dimensional Data**



**Dimensions (in./mm)**

	A	B	C	D	E	F	G
ALS 100-175	3.5 (± 0.031) 88.9 (± 0.79)	—	2.41 (± 0.015) 61.1 (± 0.38)	.75 19.1	.312 7.92	1.06 26.85	1.13 (± 0.015) 28.6 (± 0.38)
ALS 200-500	3.75 (± 0.031) 95.3 (± 0.79)	2.7 (± 0.031) 68.6 (± 0.79)	2.25 (+ .00 - .031) 57.2 (+ .00 - .79)	.75 19.1	.375 9.53	1.06 26.85	1.13 (± 0.015) 28.6 (± 0.38)
ALS 550-600	4.25 (± 0.031) 107.95 (± 0.79)	2.38 (± 0.015) 60.5 (± 0.38)	—	1.25 31.75	.531 13.5	1.59 40.4	1.81 (± 0.015) 46.1 (± 0.38)

**Time-Current Characteristics—Total Clear**



CE CE logo denotes compliance with European Union Low Voltage Directive (50-1000 VAC, 75-1500 VDC). Refer to BIF document #8002 or contact Bussmann Application Engineering at 314-527-1270 for more information.

This bulletin is intended to clearly present comprehensive product data and provide technical information that will help the end user with design applications. Bussmann reserves the right, without notice, to change design or construction of any products and to discontinue or limit distribution of any products. Bussmann also reserves the right to change or update, without notice, any technical information contained in this bulletin. Once a product has been selected, it should be tested by the user in all possible applications.



## X-ON Electronics

Largest Supplier of Electrical and Electronic Components

*Click to view similar products for [Eaton manufacturer](#):*

Other Similar products are found below :

[BK1-S506-6-3-R](#) [BK-MDL-3-R](#) [BK/ABC-1](#) [BK/MDA-15](#) [GMA-5A](#) [GMA250MA](#) [89096-015](#) [8946K153](#) [8961K155](#) [M22-D-R-GB0/K11](#)  
[M22-L-R/R](#) [6422](#) [6580](#) [CTX20-16-52LP-R](#) [CWL530FI](#) [CXM/CO/GP/R/BB](#) [6HD36](#) [714125](#) [MBO-2](#) [7314K36](#) [7321K2](#) [F02A-1-1/2A](#)  
[F02A-1-1/2AS](#) [F02A-1AS](#) [F02A-2AS](#) [F02A-3/4A](#) [F03A250V12A](#) [F03B125V4A](#) [MCR-4](#) [MDA-2-8/10-R](#) [MDA-30A](#) [MDA-V-1/16](#)  
[F60C500V10AS](#) [F60C500V15AS](#) [7563K84](#) [7634K36](#) [MDQ-3/16](#) [MDQ-7/10](#) [MDQ-V-1/10](#) [MDQ-V-1-1/4](#) [MDQ-V-1/16](#) [MDQ-V-1/2](#)  
[MDQ-V-1/4](#) [MDQ-V-3/16](#) [MDQ-V-3/8](#) [MDQ-V-6/10](#) [MDQ-V-6-1/4](#) [MDV-1-1/2](#) [MDV-3/8](#) [MDV-4](#)