

# HTC

## PCB Fuse accessories for 5 mm fuses



### PCB Fuse blocks



#### HTC-15M

- UL 4248 rating: 250 V, 20 A
- IEC 60217-6 rating: 250 V, 6.3 A, 1.6 W
- Self-certified voltage rating: 500 V, 20 A
- Tin plated brass terminals
- cURus: Guide IZLT2 & IZLT8, File # 14853
- Cover available:
  - HTC-150M (Transparent) Flammability rating: UL94-V2
  - HTC-140M (Beige/Natural) Flammability rating: UL94-V0



#### HTC-78M

- UL 4248 rating: 250 V, 20 A
- IEC 60127-6 rating: 250 V, 6.3 A, 1.6 W
- Self-certified voltage rating: 500 V, 20 A
- cURus: Guide IZLT2 & IZLT8, File # 14853
- Cover available:
  - HTC-100M Flammability rating: UL94-V0



#### HTC-60M

- UL 4248 rating: 250 V, 20 A
- IEC 60127-6 rating: 250 V, 6.3 A, 1.6 W
- Tin plated bronze terminals



#### BK4-HTC-518M

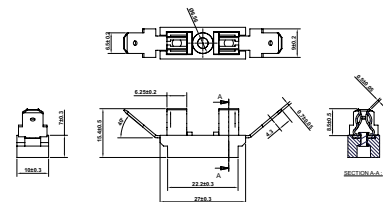
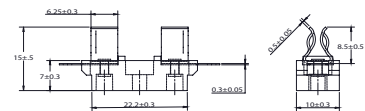
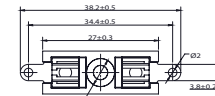
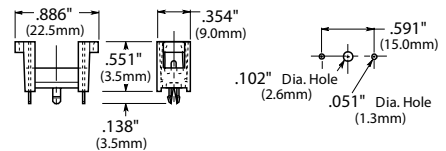
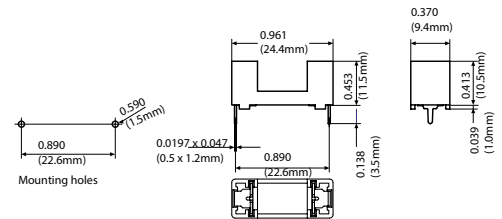
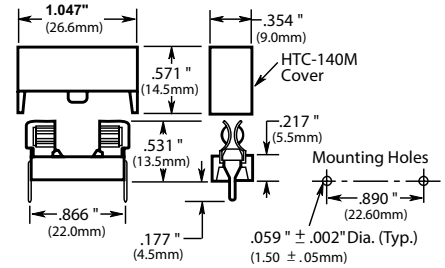
- 250 V, 15 A
- Bakelite, UL 94V-0, black
- Clip: copper alloy, nickel plated
- Terminals: brass, nickel plated



#### BK4-HTC-528M

- 250 V, 15 A
- Bakelite, UL 94V-0, black
- Clip: copper alloy, nickel plated
- Terminals: brass, nickel plated

### Dimensions- inches (mm)



## PCB Fuse clips



### HTC-200M

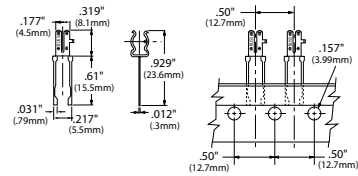
- Tin plated bronze
- Tape and fan fold packed



### HTC-210M

- Tin plated brass

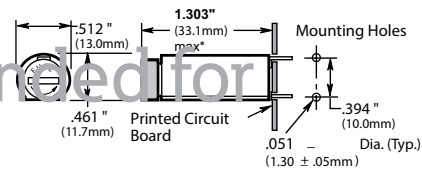
## Dimensions- inches (mm)



## PCB Fuse holders

### HTC-45M

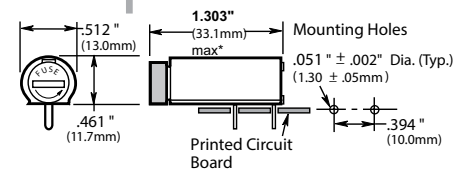
- 250 V, 10 A, 2.5 W
- Bayonet cap/carrier
- Operating temperature range: -30 °C to + 85 °C
- cURus: Guide IZLT2 & IZLT8 File # 14853



\* Maximum dimension with fuse is installed

### HTC-50M

- 250 V, 10 A, 2.5 W
- Bayonet cap/carrier
- Operating temperature range: -30 °C to + 85 °C
- cURus: Guide IZLT2 & IZLT8 File # 14853



\* Maximum dimension with fuse is installed

## Common HTC specifications

- Solerability: In accordance with IEC 68-2-20
- Molded materials: UL94 V-0

## Packaging codes

Packaging code prefix	Description
Blank	10 pieces packed into a carton (HTC-15M and HTC-60M only)
BK-	100 pieces packed into a cardboard shelf package (HTC-15M and HTC-60M only)
BK1-	1000 pieces packed into a poly bag
BK4	4000 pieces packed into a carton (HTC-518M and HTC-528M only)
AP	1000 pieces per box in Ammo pack (HTC-200M only)

Life Support Policy: Eaton does not authorize the use of any of its products for use in life support devices or systems without the express written approval of an officer of the Company. Life support systems are devices which support or sustain life, and whose failure to perform, when properly used in accordance with instructions for use provided in the labeling, can be reasonably expected to result in significant injury to the user.

Eaton reserves the right, without notice, to change design or construction of any products and to discontinue or limit distribution of any products. Eaton also reserves the right to change or update, without notice, any technical information contained in this bulletin.

**Eaton**  
Electronics Division  
1000 Eaton Boulevard  
Cleveland, OH 44122  
United States  
Eaton.com/electronics

© 2021 Eaton  
All Rights Reserved  
Printed in USA  
Publication No. 2110  
February 2021

Eaton is a registered trademark.

All other trademarks are property of their respective owners.

Follow us on social media to get the latest product and support information.



## X-ON Electronics

Largest Supplier of Electrical and Electronic Components

*Click to view similar products for [Fuse Holder](#) category:*

*Click to view products by [Eaton](#) manufacturer:*

Other Similar products are found below :

[570-290-741P40](#) [0031.1351.01](#) [020417G](#) [020418E](#) [6R30A1B](#) [F30A3S](#) [80910030](#) [8601.2020](#) [G15A2SPQ](#) [9-3557-GP REV A](#) [HDJ-B](#)  
[R6J30A3S](#) [HFH-1](#) [RF30A1S](#) [RF30A2B](#) [RF30A3SP](#) [BK/HHM](#) [BK/HJM-HH](#) [HTJ-LES-FUSE](#) [C4044-1](#) [2086-1](#) [2602](#) [2650](#) [178.000100](#)  
[F60A2SQ](#) [T30A2B](#) [G4PB8](#) [2660](#) [CQ-209V](#) [HKP-CCHH](#) [R6F30A2S](#) [341001A](#) [345621A](#) [348670](#) [CVRMCC](#) [4202](#) [4407](#) [4408](#) [4413](#) [4423](#)  
[4532](#) [4537](#) [TSD1404-12](#) [BPHHU](#) [HPC](#) [55900008011](#) [32NNL](#) [345602-010](#) [345603-010](#) [345612](#)