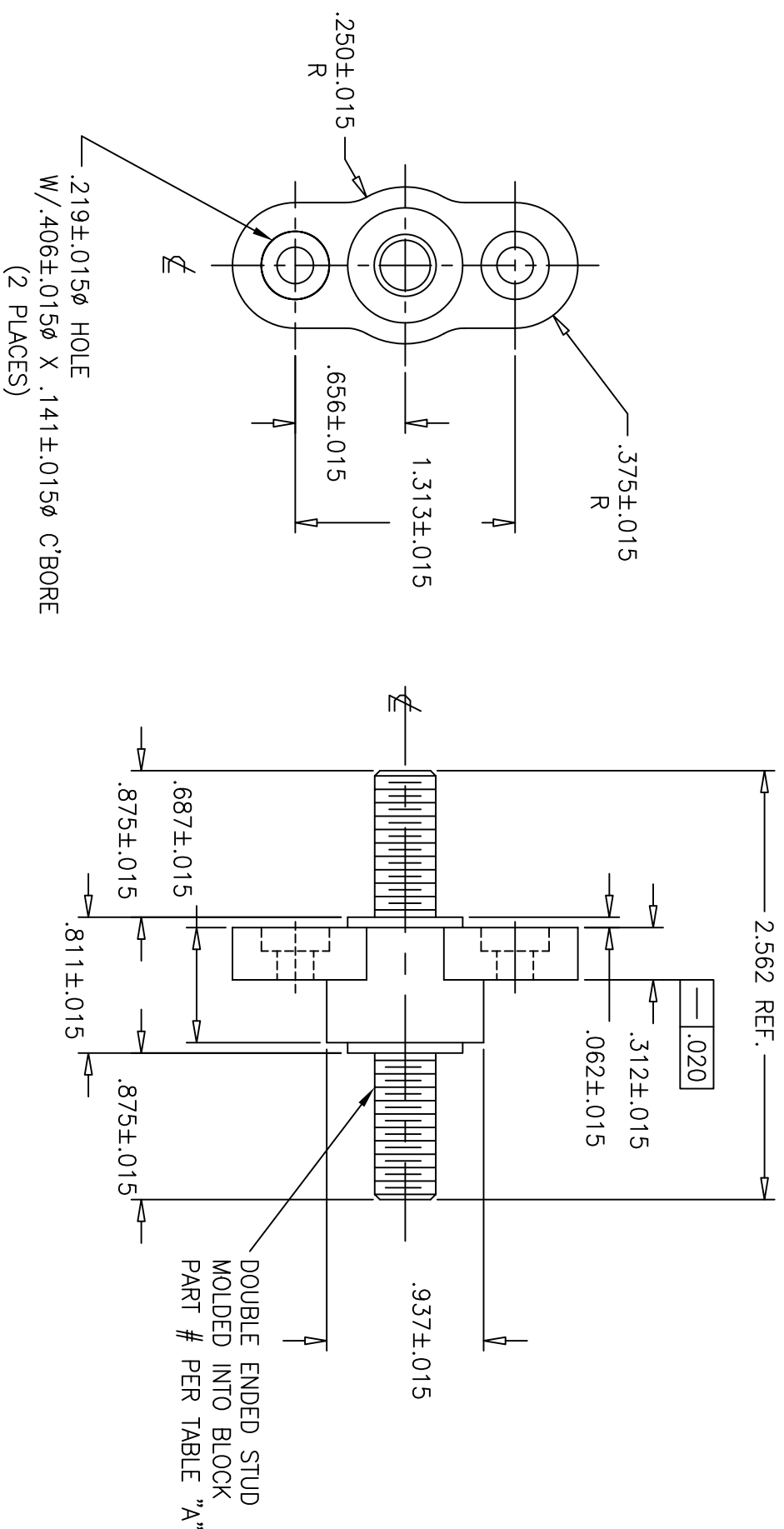


TABLE A					
PART #	BASE COLOR	THREAD SIZE	STUD PLATING	STUD	MAX TORQUE
C1938	BLACK	3/8-16 UNC-2A	ZINC	B008-1856-2	200 IN/LBS.
C1938R	RED	3/8-16 UNC-2A	ZINC	B008-1856-2	200 IN/LBS.
C1938-1	BLACK	5/16-18 UNC-2A	TIN	B008-1856-5	100 IN/LBS.
C1938-1R	RED	5/16-18 UNC-2A	TIN	B008-1856-5	100 IN/LBS.
C1938-2	BLACK	3/8-16 UNC-2A	TIN	B008-1856-3	200 IN/LBS.
C1938-2R	RED	3/8-16 UNC-2A	TIN	B008-1856-3	200 IN/LBS.
C1938-3	BLACK	5/16-18 UNC-2A	ZINC	B008-1856-4	100 IN/LBS.
C1938-3R	RED	5/16-18 UNC-2A	ZINC	B008-1856-4	100 IN/LBS.



- NOTES :
1. BLOCK MATERIAL: MOLDED 33% GLASS FILLED NYLON.
 2. BLOCK COLOR: SEE TABLE "A".
 3. STUD MATERIAL: BRASS, HALF HARD ASTM B16 ALLOY # 360.
 4. STUD PLATING: SEE TABLE "A".
 5. MAXIMUM APPLIED TORQUE NOT TO EXCEED VALUES PER TABLE.

REV #	REVISIONS	DATE	APPR.
3	REVISED MAT'L SPEC ECN-CI-4675	9-13 1985	SFF
4	REVISED MATERIAL FROM PHENOLIC TO 33% GLASS FILLED NYLON. MR	8-4 1993	
5	ADDED PN R,-1,-1R,-2,-2R,-3,-3R REVISED NOTES & DIMS ECNU04050 JG	3-2 2004	
6	56 PLANT CODE WAS B: CORRECTED STUD NOTE ECN-SU04106 RLN	4-13 2004	
A	ADDED MIN. TORQUE TO TABLE & UPDATED NOTE 5 ECN-BU04240 JG	7/30 2004	
B	CHANGED "MIN." TO "MAX" TORQUE ON TABLE. ECN-BU-U10155 AL	09-02 2010	

METRIC	ENGLISH	FRACTIONAL TOL	ANGULAR TOL	THIRD ANGLE PROJECTION	DESIGN UNITS
1 PL DEC.=±0.2	2 PL DEC.=±.01	±1/64 IN	±1'		ENGLISH
2 PL DEC.=±0.12	3 PL DEC.=±.005	ANGULAR TOL	1PL=±0.5'		CREATED USING AUTOCAD

COPYRIGHT — Cooper Industries, Inc.
This is an unpublished work. The disclosure of this work is limited to a select personnel. Further dissemination or disclosure to the public is PROHIBITED. This unpublished work is protected by Federal Copyright Law and all rights thereunder are reserved by Cooper Industries, Inc.

CONFIDENTIAL —
The information contained in this document is the property of Cooper Industries, Inc. It is not for public disclosure. Possession of the information does not convey any right to loan, sell or disclose the information. Unauthorized reproduction or use of the information is PROHIBITED. This document is to be returned to Cooper Industries, Inc. upon completion of the purpose for which it is loaned or upon request.

SEE NOTES	FINISH	SEE NOTES	DRAWN BY	DATE	SCALE
			RF	9/13/85	1:1

PART NO.	TITLE	SIZE
C1938(-XX)-SALES	JUNCTION BLOCK	SHT 1 OF 1 B

X-ON Electronics

Largest Supplier of Electrical and Electronic Components

Click to view similar products for [Terminals](#) category:

Click to view products by [Eaton](#) manufacturer:

Other Similar products are found below :

[00-054007-01074-6](#) [00-054007-70206-1](#) [00-054007-70210-8](#) [00-054007-70217-7](#) [00-054007-70226-9](#) [00-054007-70228-3](#) [00-054007-70248-1](#) [00-054007-70256-6](#) [00-054007-70301-3](#) [00-054007-70316-7](#) [00-054007-49560-4](#) [00-054007-70209-2](#) [00-054007-70225-2](#) [00-054007-70227-6](#) [00-054007-70231-3](#) [00-054007-70241-2](#) [00-054007-70242-9](#) [00-054007-70244-3](#) [00-054007-70246-7](#) [00-054007-70263-4](#) [00-054007-70288-7](#) [00-054007-70290-0](#) [00-054007-70300-6](#) [00-054007-70304-4](#) [01-2065-1-0216](#) [01-2900-1-04412](#) [00581P0075](#) [600TS-10](#) [60205-1](#) [604200-1](#) [605601-1](#) [60598-1-CUT-TAPE](#) [61314-6-C](#) [61810-3](#) [61-S](#) [61-SN](#) [626-0194](#) [62-NBM-A](#) [62-SN](#) [62-SP](#) [63-S](#) [640179-1](#) [M55155/059I03](#) [M55155/079C01](#) [M55155/099H02](#) [M55155/109H01](#) [M55155/109H02](#) [M55155/12XH05](#) [M55155/16XH02](#) [M55155/29-5S](#)