

# HRCII-C Current-Limiting Fuses

CGL

600 Volt, 1 to 600 Amps



Catalog Symbol: CGL

Current-Limiting

Ampere Rating: 1 to 600 Amperes

Voltage Rating: 600 Volts AC (or less)

1 to 30 Amps, 250 Volts DC (or less)

Interrupting Rating: 200,000A RMS Sym.

40,000A DC (1 to 30A)

Agency Approval:

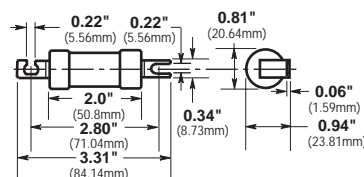
CSA Certified, Class 1422, File 53787

General Information:

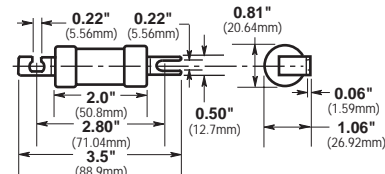
### TRON® HRC FORM II Class C Fuses

- TRON® HRCII-C fuses are designed to withstand inrush currents on typical motor start-ups while offering high current limitation in the short-circuit region.
- The TRON® HRCII-C fuses can be sized close to the motor nameplate rating.
- Closer protection is offered for many motor sizes with the availability of these additional fuse ratings.
- TRON® HRCII-C fuses have a high degree of current-limitation greatly reducing the magnetic forces and thermal stresses produced in today's high capacity systems.
- TRON® HRCII-C fuses have an interrupting rating of 200,000 RMS symmetrical amperes at 600 volts.
- TRON® HRCII-C fuses are dimensionally interchangeable with other Form II fuses on the market and can be used with the same confidence as other High Quality Buss Fuses.

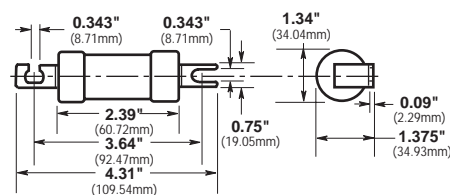
### Dimensional Data



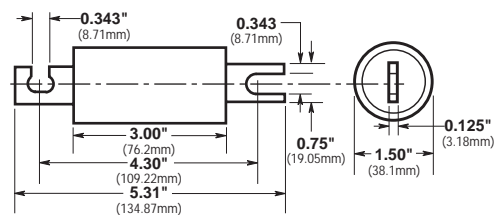
CGL 1-30



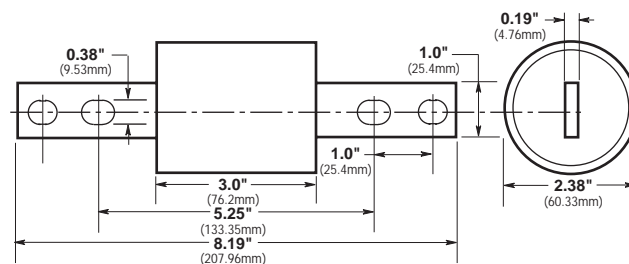
CGL 40-50



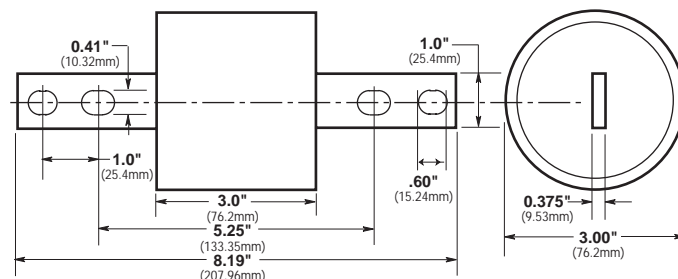
CGL 70-100



CGL 125-200



CGL 225-400



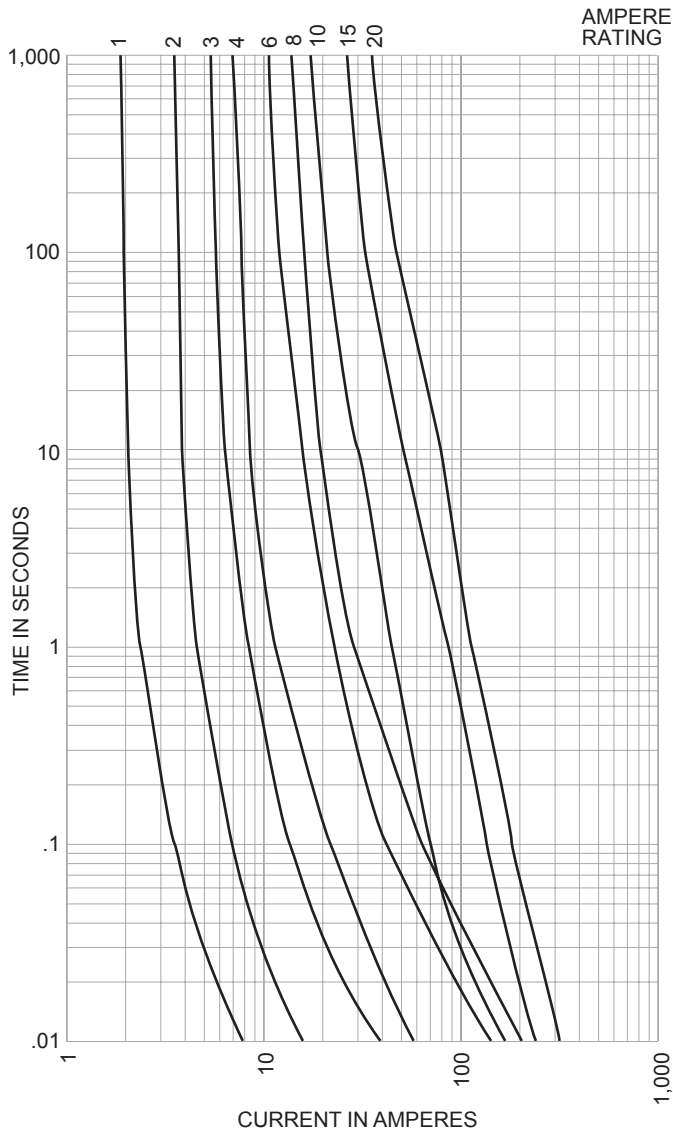
CGL 450-600

# HRCII-C Current-Limiting Fuses

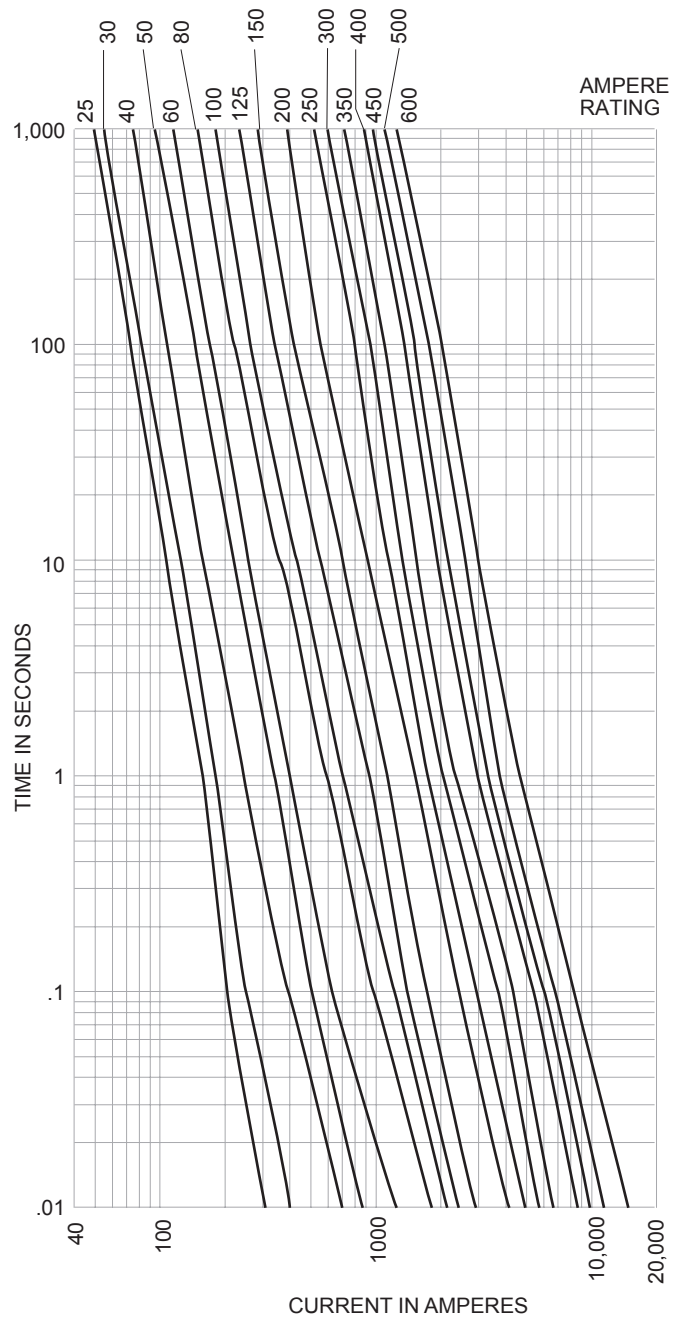
CGL

600 Volt, 1 to 600 Amps

CGL - Minimum Melt



CGL - Minimum Melt

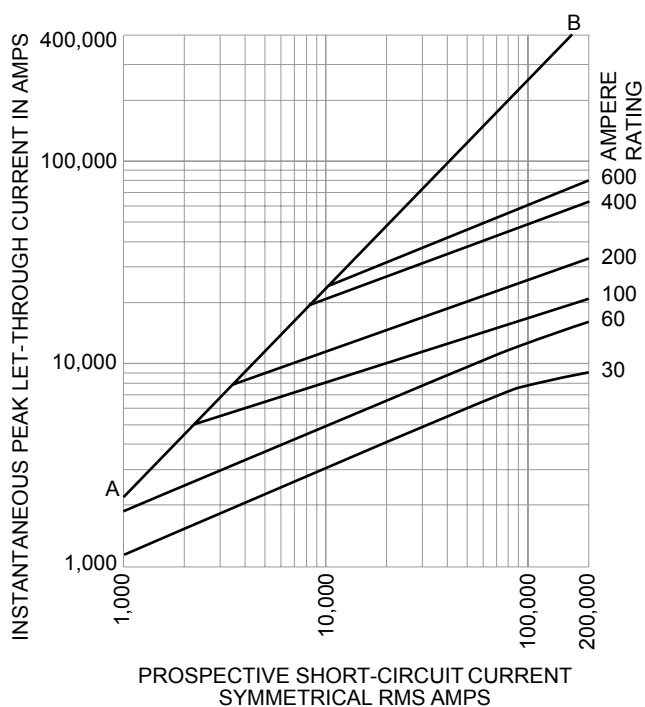


# HRCII-C Current-Limiting Fuses

## 600 Volt, 1 to 600 Amps

CGL

CGL LIMITRON



The only controlled copy of this BIF document is the electronic read-only version located on the Bussmann Network Drive. All other copies of this document are by definition uncontrolled. This bulletin is intended to clearly present comprehensive product data and provide technical information that will help the end user with design applications. Bussmann reserves the right, without notice, to change design or construction of any products and to discontinue or limit distribution of any products. Bussmann also reserves the right to change or update, without notice, any technical information contained in this bulletin. Once a product has been selected, it should be tested by the user in all possible applications.

## X-ON Electronics

Largest Supplier of Electrical and Electronic Components

*Click to view similar products for [Specialty Fuses](#) category:*

*Click to view products by [Eaton](#) manufacturer:*

Other Similar products are found below :

[63NZ02GL](#) [714125](#) [722134](#) [F02A-4AS](#) [F02B-1A](#) [80NH00GR-6](#) [FWH-200A](#) [FWP-32A14F](#) [12LCT](#) [12TDLSJ63](#) [REN-3](#) [15.5CAVH2E](#)  
[ECF-1](#) [ECF-2](#) [ECF-3](#) [ECF-4](#) [170M0213](#) [170M1369-D](#) [170M3809D](#) [BK/F02B-1A](#) [N-2-1/2](#) [N-3-2/10](#) [NITD2](#) [20D16](#) [KAA-3](#) [KAB-30](#)  
[KAW-3](#) [2D16](#) [LKN-125B](#) [16D27SB](#) [16FC](#) [170M1564D](#) [170M2616](#) [170M2668](#) [170M4161](#) [170M4241](#) [170M4699](#) [ESD63](#) [ABS-30](#) [ABS-8](#)  
[ACF-15](#) [ACF-30](#) [ACO-30](#) [F02A-10A](#) [SSD10](#) [200NH1M](#) [FWP-25A14FI](#) [FWP-40A14FI](#) [FWP-500A](#) [FWP-63A22FI](#)