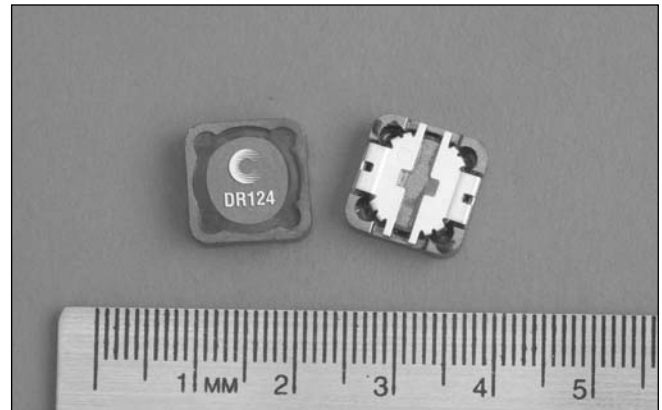


Description

- 125°C maximum total temperature operation
- Low profile surface mount inductor
- 12.5mm x 12.5mm x 4.5mm shielded drum core
- Ferrite core material
- Inductance range from 0.47µH to 1000µH
- Current range from 24.4 Amps to 0.44 Amps
- Frequency range up to 1MHz

RoHS



Applications

- Notebook power, LCD panels
- Computer, DVD players, and portable power devices
- DC-DC converters
- Buck, boost, forward, and resonant converters
- Noise filtering and filter chokes

Environmental Data

- Storage temperature range: -40°C to +125°C
- Operating temperature range: -40°C to +125°C (range is application specific)
- Solder reflow temperature: +260°C max. for 10 seconds maximum

Packaging

- Supplied in tape and reel packaging, 750 per reel

Part Number	Rated Inductance (µH)	OCL (1) µH±20%	Irms(2) Amperes	Isat (3) Amperes	DCR mΩ @20°C (Typical)	DCR mΩ @20°C (Maximum)	K-factor (4)
DR124-R47-R	0.47	0.42	16.0	24.40	2.2	2.7	17.51
DR124-1R0-R	1.0	0.83	13.9	18.00	3.00	3.6	12.50
DR124-1R5-R	1.5	1.37	11.1	14.00	4.75	5.7	9.73
DR124-2R2-R	2.2	2.04	9.1	11.45	5.92	7.1	7.96
DR124-3R9-R	3.9	3.80	7.0	8.40	12.50	15.0	5.84
DR124-4R7-R	4.7	4.88	6.5	7.65	13.50	16.2	5.15
DR124-6R8-R	6.8	6.10	5.6	6.47	18.06	21.7	4.61
DR124-8R2-R	8.2	7.45	5.2	6.22	21.67	26.0	4.17
DR124-100-R	10	8.94	4.5	5.80	23.33	28.0	3.81
DR124-120-R	12	11.5	4.1	4.96	31.67	38.0	3.50
DR124-150-R	15	14.2	3.6	4.62	37.30	44.8	3.02
DR124-180-R	18	16.2	3.4	4.32	46.97	56.4	2.82
DR124-220-R	22	20.7	3.2	3.83	53.99	64.8	2.50
DR124-270-R	27	25.7	2.8	3.44	66.67	80.0	2.24
DR124-330-R	33	31.2	2.6	3.12	80.83	97.0	2.04
DR124-390-R	39	37.3	2.3	2.85	110.00	132.0	1.86
DR124-470-R	47	44.0	2.2	2.63	124.66	149.6	1.72
DR124-560-R	56	54.9	2.0	2.35	144.32	173.2	1.54
DR124-680-R	68	67.1	1.8	2.13	183.33	220.0	1.39
DR124-820-R	82	80.5	1.7	1.94	212.72	255.3	1.27
DR124-101-R	100	95.1	1.5	1.79	256.67	308.0	1.17
DR124-121-R	120	111	1.3	1.65	311.18	373.4	1.08
DR124-151-R	150	146	1.3	1.44	371.02	445.2	0.94
DR124-181-R	180	179	1.1	1.30	501.66	602.0	0.87
DR124-221-R	220	216	1.0	1.15	558.00	669.6	0.77
DR124-271-R	270	256	0.88	1.09	725.00	870.0	0.71
DR124-331-R	330	327	0.83	0.92	825.00	990.0	0.63
DR124-471-R	470	460	0.68	0.74	1242.50	1491.0	0.53
DR124-681-R	680	669	0.56	0.65	1845.83	2215.0	0.45
DR124-821-R	820	825	0.53	0.62	2109.17	2351.0	0.40
DR124-102-R	1000	998	0.44	0.53	2898.00	3477.00	0.37

(1) Open Circuit Inductance Test Parameters: 100kHz, 0.25V, 0.0Adc.

(2) I_{rms}: DC current for an approximate 3T of 40°C without core loss. Derating is necessary for AC currents. PCB layout, trace thickness and width, air-flow, and proximity of other heat generating components will affect the temperature rise. It is recommended that the temperature of the part not exceed 125°C under worst case operating conditions verified in the end application.

(3) Isat Amperes peak for approximately 25% rolloff (@25°C)

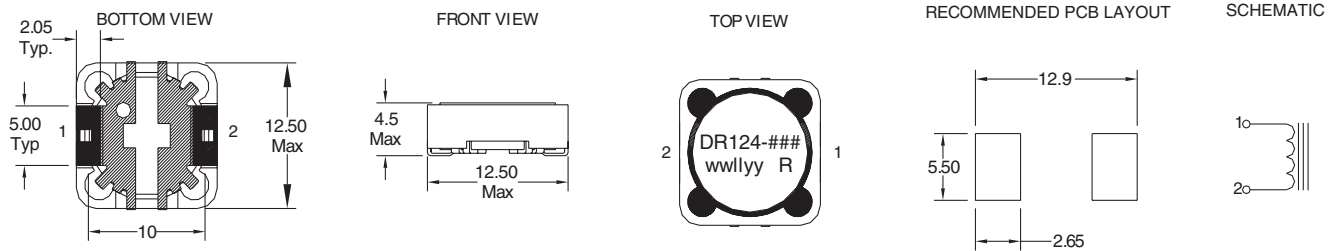
(4) K-factor: Used to determine B p-p for core loss (see graph).

B p-p = K²L^{3/4}, B p-p(mT), K: (K factor from table), L: (Inductance in µH),
³I (Peak to peak ripple current in Amps).

(5) Part Number Definition: DR124-xxx-R

DR124 = Product code and size; -xxx = Inductance value in µH;
 R = decimal point; If no R is present, third character = # of zeros.
 -R suffix = RoHS compliant

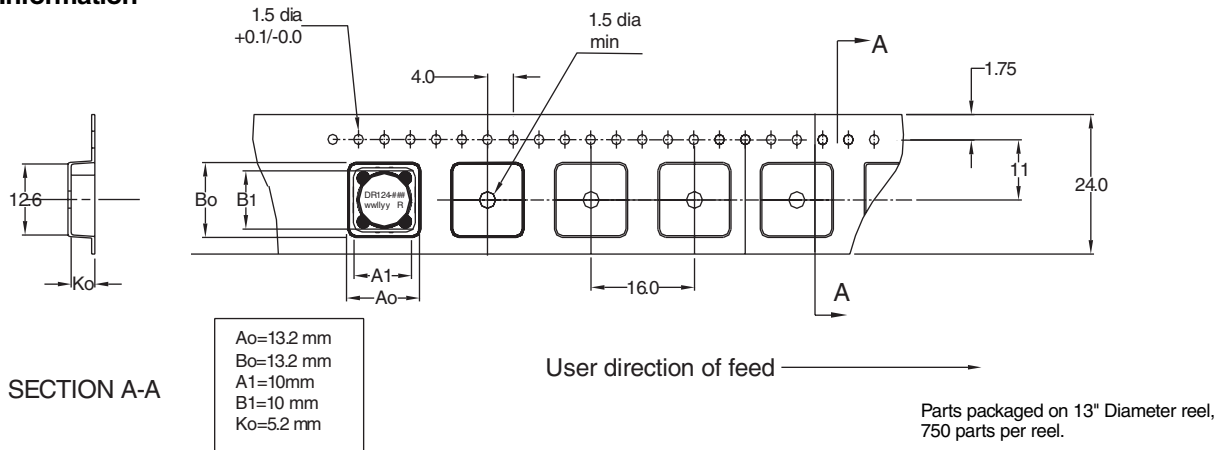
Mechanical Diagrams



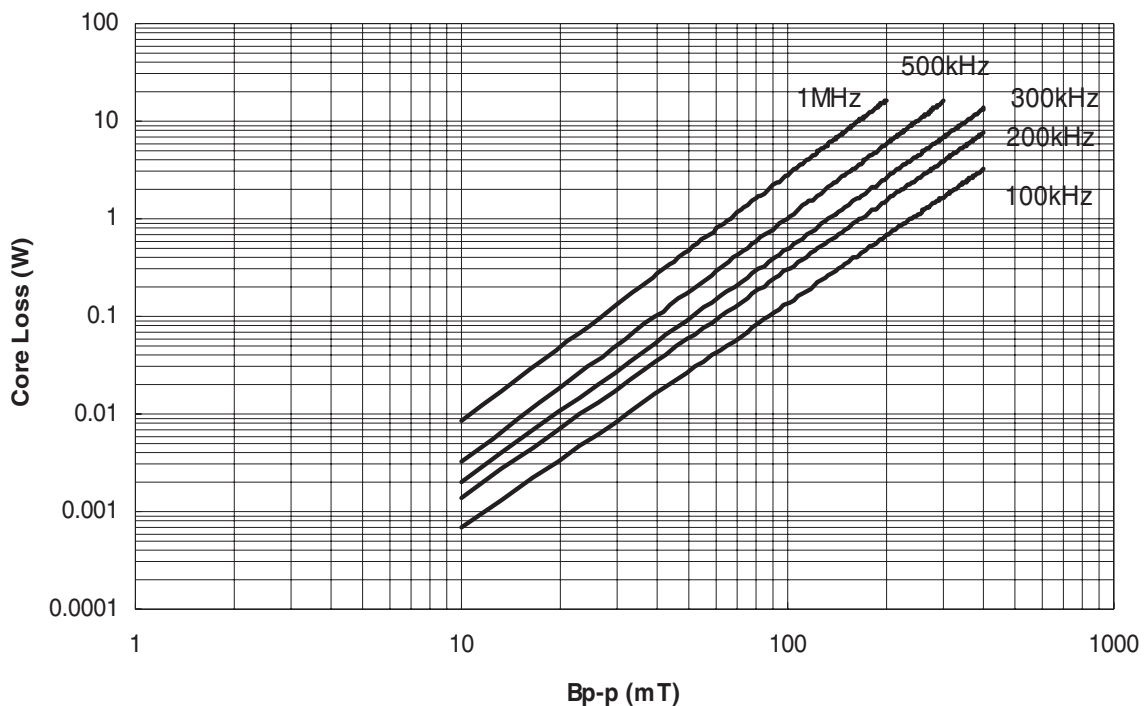
Dimensions are in millimeters.

wwlly = Date code, R = Revision level.

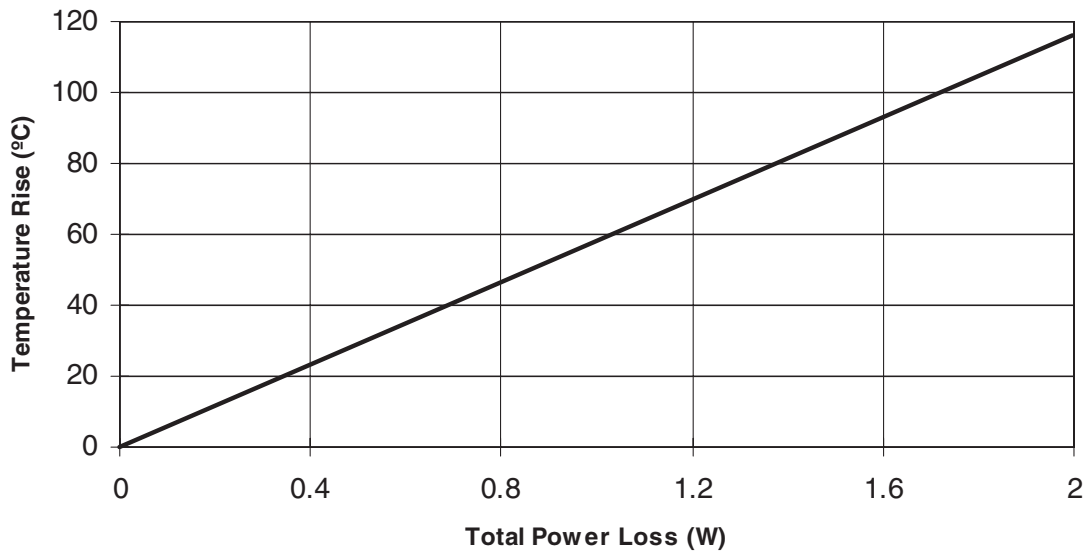
Packaging Information



Core Loss

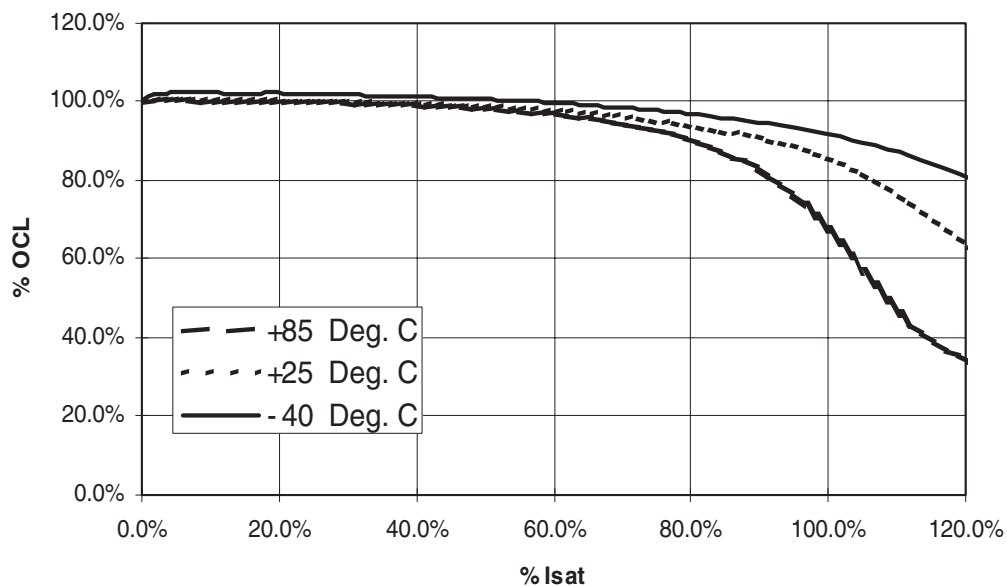


Temperature Rise vs. Loss



Inductance Characteristics

OCL Vs. Isat



X-ON Electronics

Largest Supplier of Electrical and Electronic Components

Click to view similar products for [Fixed Inductors](#) category:

Click to view products by [Eaton](#) manufacturer:

Other Similar products are found below :

[CR43NP-680KC](#) [CR54NP-820KC](#) [CR54NP-8R5MC](#) [CTX32CT-100](#) [70F224AI](#) [MGDQ4-00004-P](#) [MHL1ECTTP18NJ](#) [MHL1JCTTD12NJ](#)
[PE-51506NL](#) [PE-53601NL](#) [PE-53602NL](#) [PE-53630NL](#) [PE-53824SNLT](#) [PE-92100NL](#) [PG0434.801NLT](#) [PG0936.113NLT](#) [9310-16](#) [PM06-2N7](#) [PM06-39NJ](#) [A01TK](#) [1206CS-471XJ](#) [HC2-2R2TR](#) [HC2LP-R47-R](#) [HC3-2R2-R](#) [1206CS-151XG](#) [RCH664NP-140L](#) [RCH664NP-4R7M](#)
[RCH8011NP-221L](#) [RCP1317NP-332L](#) [RCP1317NP-391L](#) [RCR1010NP-470M](#) [RCR110DNP-331L](#) [DH2280-4R7M](#) [DS1608C-106](#) [ASPI-4020HI-R10M-T](#) [B10TJ](#) [B82477P4333M](#) [B82498B3101J000](#) [B82498B3680J000](#) [ELJ-RE27NJF2](#) [1812CS-153XJ](#) [1812CS-183XJ](#) [1812CS-223XJ](#) [1812LS-104XJ](#) [1812LS-105XJ](#) [1812LS-124XJ](#) [1812LS-154XJ](#) [1812LS-223XJ](#) [1812LS-224XJ](#) [1812LS-563XJ](#)