

Description

- 155°C maximum total temperature operation
- Surface mount inductors designed for higher speed switch mode applications requiring lower inductance, low voltage and high current
- Design utilizes high temperature powder iron material with a non-organic binder to eliminate thermal aging
- Inductance range from 0.22 uH to 4.81 uH
- Current range from 35.8 to 9.8 Amps
- Frequency range 1kHz to 500kHz



Applications

- Next generation microprocessors
- High current DC-DC converters
- VRM, multi-phase buck regulator
- PC, Workstations, Routers
- Telecom soft switches, Base Stations

Environmental Data

- Storage temperature range: -40°C to +155°C
- Operating ambient temperature range: -40°C to +155°C (range is application specific)
- Solder reflow temperature: +260°C max. for 10 seconds max.

Packaging

- Supplied in tape and reel packaging, 610 parts per reel

HIGH CURRENT (HC7)

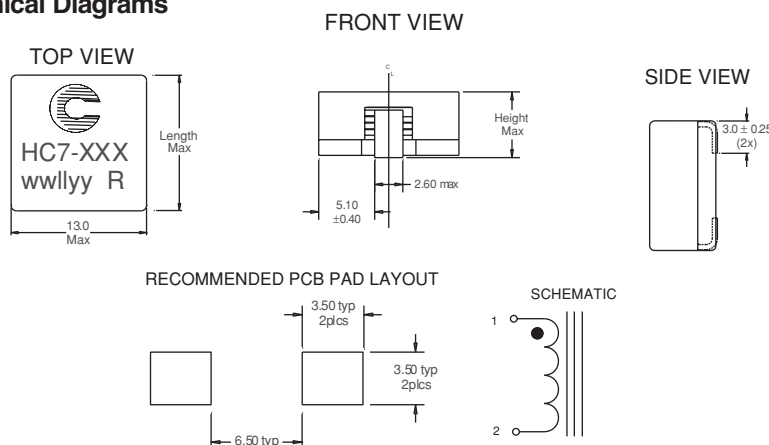
Part Number	Rated Inductance μH	OCL (1) nominal $\pm 20\%$ μH	I _{rms} (2) Amperes (Typ.)	Isat (3) Amperes 15% rolloff	Isat (4) Amperes 30% rolloff	DCR (m Ω) max. @ 20°C	Volts (5) μSec (V μS)
HC7-R20-R	.20	0.220	35.80	45.8	86.5	0.67	2.27
HC7-R47-R	.47	0.534	23.40	27.5	51.9	1.60	3.83
HC7-1R0-R	1.0	1.05	20.30	19.6	37.1	2.10	5.36
HC7-1R5-R	1.5	1.73	14.20	15.3	28.8	4.30	6.90
HC7-2R2-R	2.2	2.58	13.00	12.5	23.6	5.20	8.40
HC7-3R9-R	3.9	3.61	10.40	10.6	20.0	7.90	10.0
HC7-4R7-R	4.7	4.81	9.80	9.2	17.3	9.00	12.6

- 1) Test Parameters: 100kHz, 1.0Vrms
 - 2) I_{rms} Amperes for approximately ΔT of 40°C above 85°C ambient
 - 3) Isat Amperes Peak for approximately 15% rolloff (@20°C)
 - 4) Isat Amperes Peak for approximately 30% rolloff (@20°C)
 - 5) Applied Volt-Time product (V- μS) across the inductor. This value represents the applied V- μS at operating frequency necessary to generate additional core loss which contributes to the 40°C temperature rise. De-rating of the I_{rms} is required to prevent excessive temperature rise. The 100% V- μS rating is equivalent to a ripple current I_{p-p} of 20% of Isat (30% rolloff option).
- It is recommended that the temperature of the part not exceed 155°C under worst case operating conditions verified in the end application.

Units supplied in tape and reel packaging. 13" reels 610 parts per reel. Carrier tape width = 24 mm. Meets EIA standard

Part number definition:
 HC7-XXX-R
 HC7 = Product code and size
 XXX = Inductance value in uH.
 R = Decimal point. If no R is present, third character = #of zeros
 -R suffix indicates RoHS compliant

Mechanical Diagrams



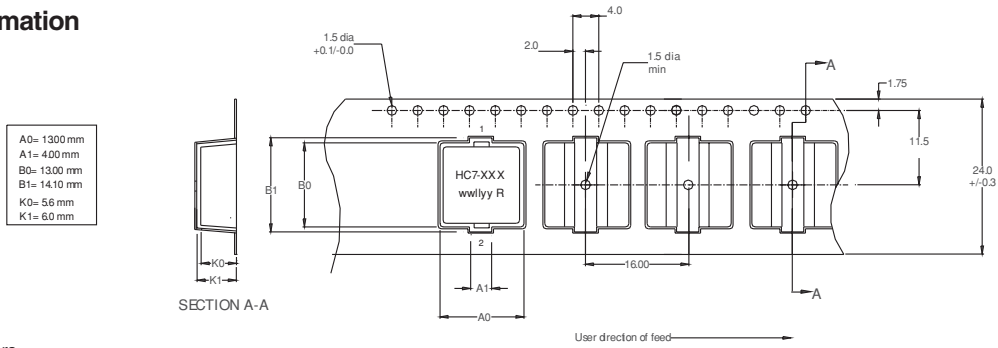
Maximum Dimension

Part Number	Height mm	Length mm
HC7-R20-R	6.0	14.25
HC7-R47-R	5.5	13.8
HC7-1R0-R	5.5	13.8
HC7-1R5-R	5.5	13.8
HC7-2R2-R	5.5	13.8
HC7-3R9-R	5.5	13.8
HC7-4R7-R	5.5	13.8

Dimensions in Millimeters.
 All dimensions I+/- 0.2 mm unless otherwise specified.
 All soldering surfaces are coplanar within 0.15 mm.

wwllyy = Date code R = Revision level

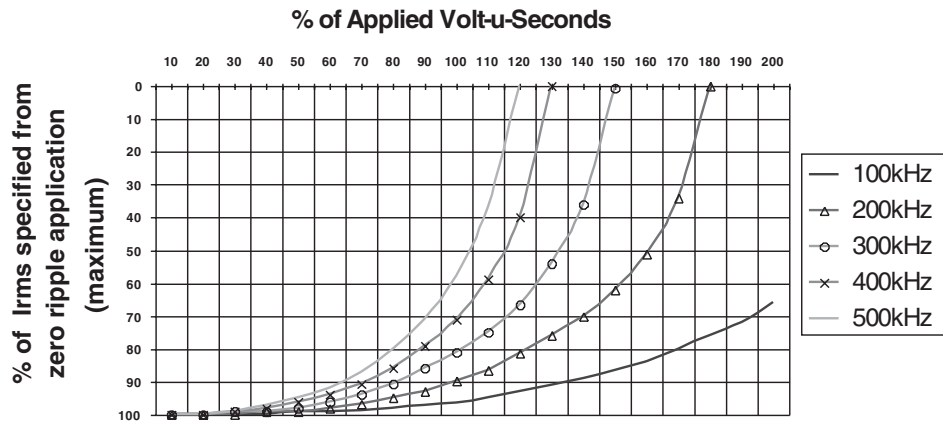
Packaging Information



Dimensions in Millimeters

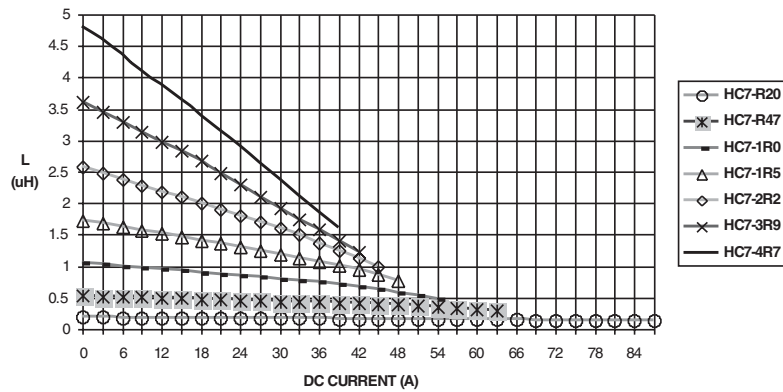
Core Loss

Irms DERATING WITH CORE LOSS



Inductance Characteristics

Inductance vs. Idc



HIGH CURRENT (HC7)

X-ON Electronics

Largest Supplier of Electrical and Electronic Components

Click to view similar products for [Fixed Inductors](#) category:

Click to view products by [Eaton](#) manufacturer:

Other Similar products are found below :

[CR43NP-680KC](#) [CR54NP-820KC](#) [CR54NP-8R5MC](#) [CTX32CT-100](#) [70F224AI](#) [MGDQ4-00004-P](#) [MHL1ECTTP18NJ](#) [MHL1JCTTD12NJ](#)
[PE-51506NL](#) [PE-53601NL](#) [PE-53602NL](#) [PE-53630NL](#) [PE-53824SNLT](#) [PE-92100NL](#) [PG0434.801NLT](#) [PG0936.113NLT](#) [9310-16](#) [PM06-2N7](#) [PM06-39NJ](#) [A01TK](#) [1206CS-471XJ](#) [HC2-2R2TR](#) [HC2LP-R47-R](#) [HC3-2R2-R](#) [1206CS-151XG](#) [RCH664NP-140L](#) [RCH664NP-4R7M](#)
[RCH8011NP-221L](#) [RCP1317NP-332L](#) [RCP1317NP-391L](#) [RCR1010NP-470M](#) [RCR110DNP-331L](#) [DH2280-4R7M](#) [DS1608C-106](#) [ASPI-4020HI-R10M-T](#) [B10TJ](#) [B82477P4333M](#) [B82498B3101J000](#) [B82498B3680J000](#) [ELJ-RE27NJF2](#) [1812CS-153XJ](#) [1812CS-183XJ](#) [1812CS-223XJ](#) [1812LS-104XJ](#) [1812LS-105XJ](#) [1812LS-124XJ](#) [1812LS-154XJ](#) [1812LS-223XJ](#) [1812LS-224XJ](#) [1812LS-563XJ](#)