

LIMITRON®

Capacitor Fuses

KGJ
KGJ-E

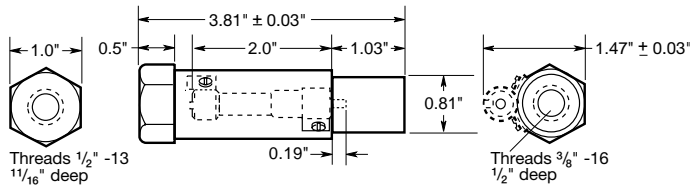


Catalog Symbol: KGJ, KGJ-E
 Fast-Acting
 Voltage Rating: 600Vac or less
 Agency Information:
 UL Recognized, 15-300A Guide JFHR2, File E56412
 Available Amperes*: 20, 35, 50, 60, 75, 80, 100, 125, 150, 175, 200, 225, 250, 300
 Interrupting Rating: 200,000A RMS Symmetrical
 General Information:

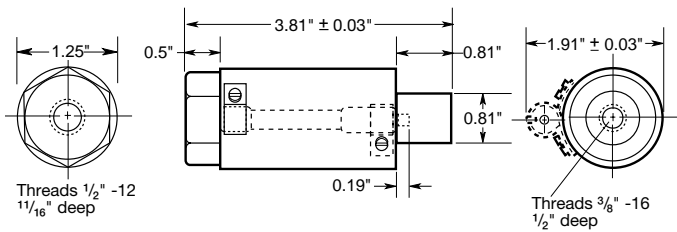
- For use with threaded capacitors.
- Use the KGJ-E when indication is desired.

*KGJ-E not available in 75A.

Dimensional Data



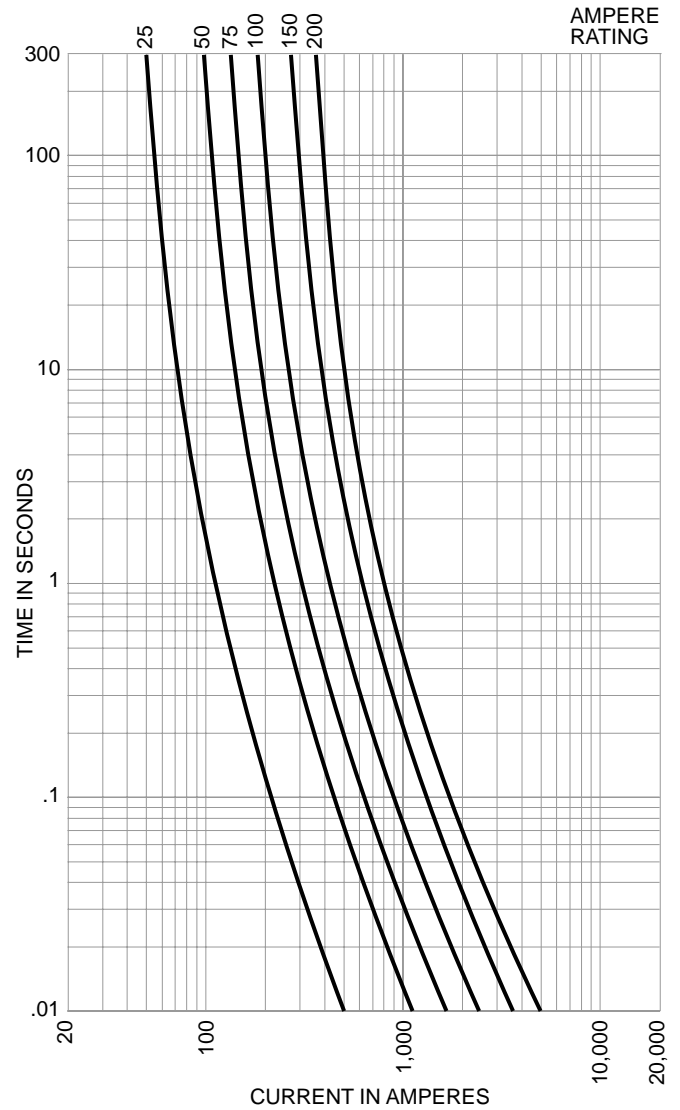
15A - 150A



175A - 300A

Suggested Maximum Torque
 Values (Inch Pounds): $\frac{3}{8}$ -16: 170 in-lbs
 $\frac{1}{2}$ -13, -400 in-lbs
 Indicator Holding Screws: 40 in-lbs

Time-Current Characteristic Curves—Average Melt



The only controlled copy of this Data Sheet is the electronic read-only version located on the Bussmann Network Drive. All other copies of this document are by definition uncontrolled. This bulletin is intended to clearly present comprehensive product data and provide technical information that will help the end user with design applications. Bussmann reserves the right, without notice, to change design or construction of any products and to discontinue or limit distribution of any products. Bussmann also reserves the right to change or update, without notice, any technical information contained in this bulletin. Once a product has been selected, it should be tested by the user in all possible applications.

X-ON Electronics

Largest Supplier of Electrical and Electronic Components

Click to view similar products for [Specialty Fuses](#) category:

Click to view products by [Eaton](#) manufacturer:

Other Similar products are found below :

[63NZ02GL](#) [714125](#) [722134](#) [F02A-4AS](#) [F02B-1A](#) [80NH00GR-6](#) [FWH-200A](#) [FWP-32A14F](#) [12LCT](#) [12TDLSJ63](#) [REN-3](#) [15.5CAVH2E](#)
[ECF-1](#) [ECF-2](#) [ECF-3](#) [ECF-4](#) [170M0213](#) [170M1369-D](#) [170M3809D](#) [BK/F02B-1A](#) [N-2-1/2](#) [N-3-2/10](#) [NITD2](#) [20D16](#) [KAA-3](#) [KAB-30](#)
[KAW-3](#) [2D16](#) [LKN-125B](#) [16D27SB](#) [16FC](#) [170M1564D](#) [170M2616](#) [170M2668](#) [170M4161](#) [170M4241](#) [170M4699](#) [ESD63](#) [ABS-30](#) [ABS-8](#)
[ACF-15](#) [ACF-30](#) [ACO-30](#) [F02A-10A](#) [SSD10](#) [200NH1M](#) [FWP-25A14FI](#) [FWP-40A14FI](#) [FWP-500A](#) [FWP-63A22FI](#)