

Rail mount terminal blocks

NDN Series

Specifications

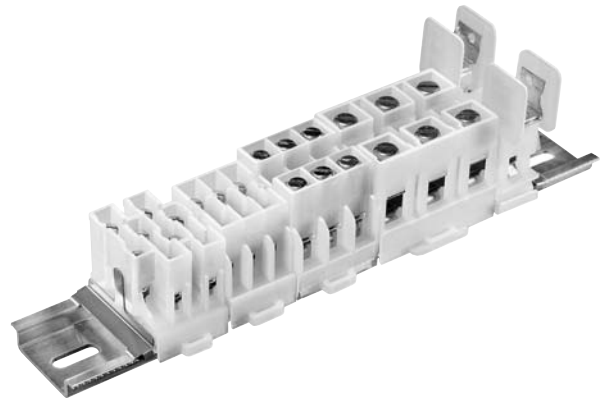
Description: High-density, snap-on 35mm DIN rail compatible rail mount terminal blocks.

Construction: Unique, impact resistant, one-piece thermoplastic moldings. Heat treated stainless steel collars (to secure wires). Tin-plated copper alloy terminals. Zinc-plated steel screws.

Circuits Per Foot: Up to 48 circuits per foot.

Agency Information: CE, UL E62622; CSA LR15364.

Flammability Rating: UL 94V2



NDNV4-__ __ (color)

Specifications

Description: Rail mount terminal block.

Center Spacing: 0.250" (6.35).

Circuit Jumper: JN4, 4 circuits.

Screw Size: #6-32.

Poles: 4

Circuits Per Foot: 48

Wire Range: AWG #10-22 CU.

Ratings:

Volts: — 600V

Amps: — 0-30A

Agency Information: CE, UL E62622; CSA LR15364.

Flammability Rating: UL 94V2.

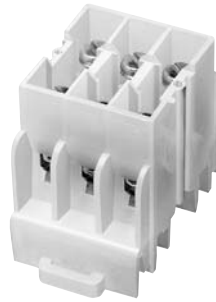
Marking Tape: MTC6.

Torque Rating: 18 in-lb max.

Mounting Options: 35mm DIN rail, C-rail.

Catalog Numbers

Numbers	Colors
NDNV4-WH	WH - White (Standard)
NDNV4-BK	BK - Black



NDN3-__ __ (color)

Specifications

Description: Rail mount terminal block.

Center Spacing: 0.300" (7.62).

Circuit Jumper: JNDN3, 2 circuits.

Screw Size: #6-32.

Poles: 3

Circuits Per Foot: 38

Wire Range: AWG #10-22 CU.

Ratings:

Volts: — 600V

Amps: — 0-30A (field wiring)

— 0-30A (factory wiring)

Agency Information: CE, UL E62622; CSA LR15364.

Flammability Rating: UL 94V2

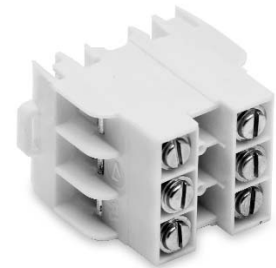
Marking Tape: MT12-½.

Torque Rating: 18 in-lb max.

Mounting Options: 35mm DIN rail, C-rail.

Catalog Numbers

Numbers	Colors
NDN3-WH	WH - White (Standard)
NDN3-BK	BK - Black



NDN63-__ __ (color)

Specifications

Description: Rail mount terminal block.

Center Spacing: 0.375" (9.52).

Circuit Jumper: JN3, 2 circuits.

Screw Size: #10-32.

Poles: 3

Circuits Per Foot: 30

Wire Range: AWG #6-18 CU.

Ratings:

Volts: — 600V

Amps: — 0-65A

Agency Information: CE, UL E62622; CSA LR15364.

Flammability Rating: UL 94V2

Marking Tape: MT12-½.

Torque Rating: 35 in-lb max.

Mounting Options: 35mm DIN rail, C-rail.

Catalog Numbers

Numbers	Colors
NDN63-WH	WH - White (Standard)
NDN63-BK	BK - Black

X-ON Electronics

Largest Supplier of Electrical and Electronic Components

Click to view similar products for [DIN Rail Terminal Blocks](#) category:

Click to view products by [Eaton](#) manufacturer:

Other Similar products are found below :

[00110420202](#) [8WA1011-1BH23](#) [8WA1011-1EF20](#) [91.010](#) [9102100000](#) [91.040](#) [9123140000](#) [9123140001](#) [RBO 5-T-B-HEX](#) [1333564](#) [DP25-GY-ND](#) [1431306](#) [1433306](#) [NFT2-WH](#) [HSL-TB64-DIN](#) [90.070](#) [91.020](#) [912314](#) [260-301_NR](#) [2757571](#) [280-331](#) [280-560](#) [280-564](#) [281-611/281-542](#) [281-673/281-411](#) [281-994](#) [283-317](#) [283-607](#) [2909798](#) [264-724](#) [264-726](#) [280-530](#) [280-555](#) [280-619](#) [281-610](#) [281-622/281-417](#) [284-317](#) [284-601](#) [2907033](#) [3048496](#) [5542152](#) [35956](#) [USK 10](#) [102510](#) [1025100000](#) [5520682](#) [5607102](#) [EMH 25-ZE30](#) [591620-2](#) [UM 45-SEFE M.NUT BK](#)