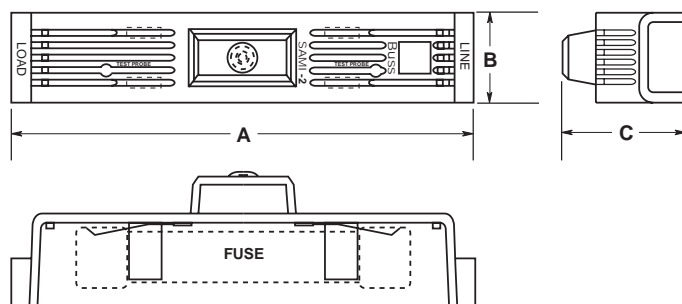
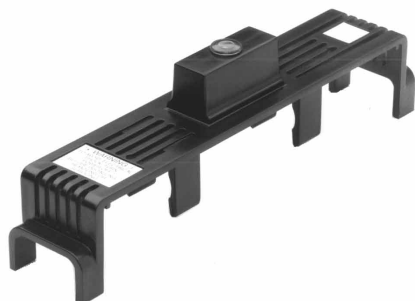


# SAMI Indicating Fuse Covers

SAMI



Catalog Symbol: SAMI Series

For Class J, R, H, K5, CC, G and Midget type fuses.

Ampere Rating: 0 to 100 Amps

Voltage Rating:

Non-Indicating - 0 to 600 Volt AC/DC

Indicating - 90 to 600 Volt AC

- 115 to 600 Volt DC

Agency Approvals:

All UL Listed, except SAMI-7I and SAMI 7N are UL Recognized.

CSA Certified, Class 6225-01, File LR47235

Material: Black thermoplastic with a flammability rating of

UL 94-V2

### General Information:

- Innovative design, covers exposed terminals and contacts of Bussmann fuseblocks.
- Fits most competitive fuseblocks.
- Buss yellow light on indicating SAMI shows when the fuse is open – helps trouble shoot the system and reduces downtime.
- All versions are reusable – no need to pay for indication every time a fuse opens.
- Indication contacts have teeth to break oxidation layer on the existing fuse endcap to provide a clear signal path.
- Less than .6mA leakage current at 600 volt.
- Visual marking of line and load side.
- SAMI cover ends can easily be cut away if necessary to fit cover over existing wiring or to fit most safety switches.
- Dead-front construction provides added protection against accidental contact by maintenance personnel.
- Labels are provided with the SAMI fuse cover for writing in circuit or fuse information.
- One cover is required for each pole.
- SAMI-8\_ fusecover includes adapter for use with short body Class R fuses. Adapter available separately as part number SAMI-8A.

### Dimensional Data (inches)

All dimensions (± .020)

Catalog Number*	Description	A	B	C
SAMI-1_	600V, J (0-30A) and 250V, R, K5, H (35-60A)	5.02	1.03	1.94
SAMI-2_	600V, R, K5, H (0-30A)	7.03	1.30	2.07
SAMI-3_	600V, J (65-100A)	7.03	1.30	2.33
SAMI-4_	250V, R, K5, H (65-100A)	8.20	1.30	2.18
SAMI-5_	600V, R, K5, H (35-60A)	8.20	1.30	2.18
SAMI-6_	600V, J (35-60A)	4.98	1.17	2.14
SAMI-7_	600V, Midget, Class CC	3.82	0.75	1.72
SAMI-8_	600V, R, H (65-100A)	10.38	1.50	2.33
SAMI-9_	250V, R, K5, H (0-30A) and 600V, T (0-30A)	3.82	0.75	1.72

### \*Catalog Numbers

For Indicating cover, add suffix **I**.

For Non-indicating cover, add suffix **N**.

Example: SAMI-7I = Indicating

SAMI-7N = Non-indicating

Indicating feature requires a minimum of 90 VAC or 115 VDC to illuminate lamp.

For fuse and fuseblock applications, see page 2.

CE CE logo denotes compliance with European Union Low Voltage Directive (50-1000 VAC, 75-1500 VDC). Refer to BIF document #8002 or contact Bussmann Application Engineering at 314-527-1270 for more information.

**WARNING:** To avoid electrical shock, turn power off before installing, removing or servicing.

# SAMI

## Indicating Fuse Covers

SAMI

### Bussmann Fuses / SAMI Catalog Number\*

AGU 0 - 30	SAMI-7_	FRS-R 65 - 100	SAMI-8_	KWN-R 35 - 60	SAMI-1_	MIN 0 - 15	SAMI-7_
BAF 0 - 30	SAMI-7_	JJS 0 - 30	SAMI-9_	KWN-R 65 - 100	SAMI-4_	NON 0 - 30	SAMI-9_
BAN 0 - 30	SAMI-7_	JKS 0 - 30	SAMI-1_	KWS-R 0 - 30	SAMI-2_	NON 35 - 60	SAMI-1_
BBS 0 - 30	SAMI-7_	JKS 35 - 60	SAMI-6_	KWS-R 35 - 60	SAMI-5_	NON 65 - 100	SAMI-4_
CGL 0 - 60	SAMI-1_	JKS 65 - 100	SAMI-3_	LP-CC 0 - 30	SAMI-7_	NOS 0 - 30	SAMI-2_
FNA 0 - 30	SAMI-7_	KLM 0 - 30	SAMI-7_	LPJ 0 - 30	SAMI-1_	NOS 35 - 60	SAMI-5_
FNM 0 - 30	SAMI-7_	KTK 0 - 50	SAMI-7_	LPJ 35 - 60	SAMI-6_	NOS 65 - 100	SAMI-8_
FNQ 0 - 30	SAMI-7_	KTK-R 0 - 30	SAMI-7_	LPJ 65 - 100	SAMI-3_	REN 0 - 30	SAMI-9_
FNQ-R 0 - 10	SAMI-7_	KTN-R 0 - 30	SAMI-9_	LPN-RK 0 - 30SP	SAMI-9_	REN 35 - 60	SAMI-1_
FNW 12 - 30	SAMI-7_	KTN-R 35 - 60	SAMI-1_	LPN-RK 35 - 60SP	SAMI-1_	REN 65 - 100	SAMI-4_
FRN-R 0 - 30	SAMI-9_	KTN-R 65 - 100	SAMI-4_	LPN-RK 65 - 100SP	SAMI-4_	RES 0 - 30	SAMI-2_
FRN-R 35 - 60A	SAMI-1_	KTS-R 0 - 30	SAMI-2_	LPS-RK 0 - 30SP	SAMI-2_	RES 35 - 60	SAMI-5_
FRN-R 65 - 100	SAMI-4_	KTS-R 35 - 60	SAMI-5_	LPS-RK 35 - 60SP	SAMI-5_	RES 65 - 100	SAMI-8_
FRS-R 0 - 30	SAMI-2_	KTO 0 - 6	SAMI-7_	LPS-RK 65 - 100SP	SAMI-8_	SC 0 - 30	SAMI-7_
FRS-R 35 - 60	SAMI-5_	KWN-R 0 - 30	SAMI-9_	MIC 0 - 15	SAMI-7_		

### Fuseblocks / SAMI Catalog Number\*

BC Series	SAMI-7_	R60030	SAMI-2_
BG Series	SAMI-7_	R60060	SAMI-5_
BM Series	SAMI-7_	R60100	SAMI-8_
H25030	SAMI-9_	T60030	SAMI-9_
H25060	SAMI-1_		
H25100	SAMI-4_		
H60030	SAMI-2_		
H60060	SAMI-5_		
H60100	SAMI-8_		
J60030, JP60030	SAMI-1_		
J60060	SAMI-6_		
J60100	SAMI-3_		
R25030	SAMI-9_		
R25060	SAMI-1_		
R25100	SAMI-4_		

Data Sheets for Safety Switch Applications available on Bussmann Information FAX (BIF) 314-527-1450.

Catalog No.	BIF Doc#	Catalog No.	BIF Doc#
SAMI-1	12041	SAMI-5	12045
SAMI-2	12042	SAMI-6	12046
SAMI-3	12043	SAMI-8	12048
SAMI-4	12044	SAMI-9	12049

**WARNING:** To avoid electrical shock, turn power off before installing, removing or servicing.

The only controlled copy of this BIF document is the electronic read-only version located on the Bussmann Network Drive. All other copies of this document are by definition uncontrolled. This bulletin is intended to clearly present comprehensive product data and provide technical information that will help the end user with design applications. Bussmann reserves the right, without notice, to change design or construction of any products and to discontinue or limit distribution of any products. Bussmann also reserves the right to change or update, without notice, any technical information contained in this bulletin. Once a product has been selected, it should be tested by the user in all possible applications.

## X-ON Electronics

Largest Supplier of Electrical and Electronic Components

*Click to view similar products for [Fuse Holder Accessories](#) category:*

*Click to view products by [Eaton](#) manufacturer:*

Other Similar products are found below :

[BK/1A1337](#) [BK/2A1460](#) [BO2-02](#) [BP/FP-2](#) [903-048](#) [9732](#) [CO2-10](#) [CO3-03](#) [B001-7018/J](#) [BK/1A1853](#) [BK/1A4421](#) [BK/1A6049](#) [BK/9732](#)  
[BO3-03](#) [X30110](#) [09030012H](#) [0904216001](#) [09050023H](#) [FHM20200ZPA](#) [FHM20200Z](#) [BK/9834](#) [901-108](#) [00970021HXNVDL](#) [00BS0232P](#)  
[CO2-04](#) [BK1A1853](#) [BK9835](#) [BK-HHT](#) [BK9834](#) [BK1A4806-2](#) [0880.0001](#) [00970053XP](#) [3566C](#) [04450718ZX900](#) [BP/FP-3](#) [B001-7007/J](#)  
[BO4-05](#) [359.5900.087](#) [868-951](#) [868-952](#) [868-953](#) [868-955](#) [868-956](#) [868-957](#) [58600000005](#) [33-012C](#) [09230025LXREDM8](#) [01520903TXN](#)  
[882-267-002](#) [882-267-003](#)