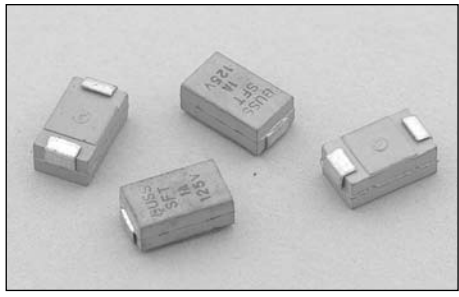


### Description

- Fast Acting Surface Mount Fuse
- Solid matrix design encapsulated in a 94V-O thermoplastic body
- Copper Leads with a tin/lead finish
- Fuses marked with catalog symbol, ampere rating, and voltage rating



ELECTRICAL CHARACTERISTICS	
% of Amp Rating	Opening Time
100%	4 Hours Minimum
200%	60 Seconds Maximum
250%	5 Seconds Maximum

### Agency Information

- UL Recognition Guide and File numbers: JDYX2 & E19180 (0-10A, 12.5A AC only)
- CSA Certification Record No: Class #1422-01, File #53787

### Environmental Data

- Resistance to Solder Heat: MIL-STD-202F, Method B
- Vibration: MIL-STD-202F, Method 204 Test Condition A

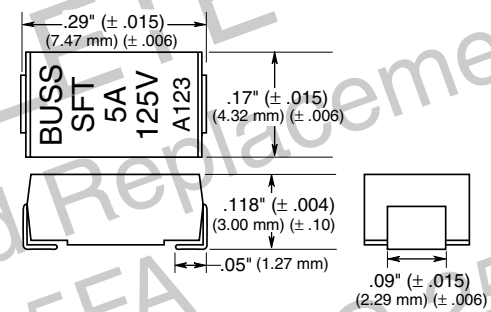
### Soldering Method

- Wave Immersion: 260°C, 10 sec max
- IR Reflow: 260°C, 30 sec max

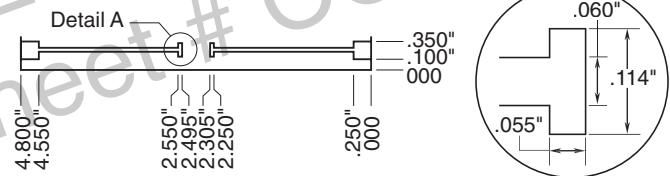
### Ordering

- Specify product code and packaging code

### Dimensional Data



### Trace Geometry

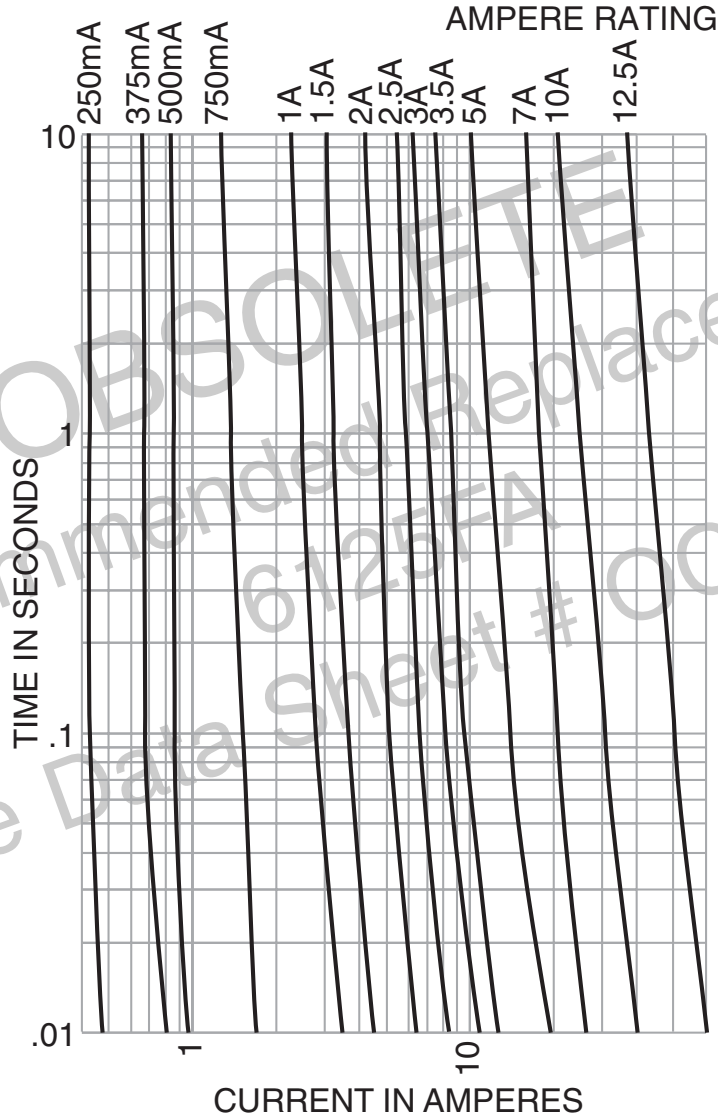


### Electrical Characteristics

Product Code	Rated Voltage		Interrupting Rating <sup>1</sup>		Pre-arcing I <sup>2</sup> T (A <sup>2</sup> sec)		Typical Total Clearing <sup>3</sup> I <sup>2</sup> T (A <sup>2</sup> sec)		Typical Voltage Drop <sup>2</sup> Volts at 100% Rated Current
	AC (Max.)	DC (Max.)	AC	DC	AC	DC	AC	DC	
SFT-63mA	125V	125V	50A	300A					
SFT-125mA	125V	125V	50A	300A					
SFT-250mA	125V	125V	50A	300A	7.49 x 10 <sup>-5</sup>	5.1 x 10 <sup>-6</sup>	2.0 x 10 <sup>-4</sup>	6.29 x 10 <sup>-6</sup>	.8
SFT-375mA	125V	125V	50A	300A	3.17 x 10 <sup>-4</sup>	2.18 x 10 <sup>-5</sup>	4.18 x 10 <sup>-4</sup>	2.67 x 10 <sup>-5</sup>	.75
SFT-500mA	125V	125V	50A	300A	4.46 x 10 <sup>-4</sup>	3.8 x 10 <sup>-5</sup>	5.74 x 10 <sup>-4</sup>	4.63 x 10 <sup>-5</sup>	.66
SFT-750mA	125V	125V	50A	300A	1.72 x 10 <sup>-3</sup>	2.27 x 10 <sup>-4</sup>	2.59 x 10 <sup>-3</sup>	2.77 x 10 <sup>-4</sup>	.525
SFT-1	125V	125V	50A	300A	.0099	.0069	.0114	.0076	.12
SFT-1.5	125V	125V	50A	300A	.0302	.0204	.0345	.0246	.20
SFT-2	125V	125V	50A	300A	.0784	.0651	.0891	.0811	.170
SFT-2.5	125V	125V	50A	300A	.1775	.1390	.2383	.1574	.145
SFT-3	125V	125V	50A	300A	.3355	.2419	.4359	.2664	.130
SFT-3.5	125V	125V	50A	300A	.4980	.3812	.6355	.4696	.155
SFT-4	125V	125V	50A	300A	.8855	.6785	1.0740	.7829	.135
SFT-5	125V	125V	50A	300A	1.7264	1.2912	2.3779	1.3556	.125
SFT-7.0A	60V	90V	50A	300A	1.64	.518	1.97	.573	.114
SFT-10.0A	60V	90V	50A	300A	3.79	1.06	3.92	1.67	.130
SFT-12.5A	48V	60V†	50A	300A	15	4.04	20	4.28	.090

† NOTE: SFT 12.5A is UL recognized on AC Only.  
 1. Interrupting ratings were measured at 100% power factor on AC, and a time constant less than 1ms on DC.  
 2. Voltage drop was measured at 25°C ± 3°C ambient temperature at rated current with device mounted on a circuit trace.  
 3. I<sup>2</sup>t measured at 50 amp, 125 VAC, .95PF, random closing angle; 300 amps, 125 VDC, TC<1ms.  
 4. Device designed to carry 100% of rated current for four hours minimum. An operating current of 80% or less of rated current is recommended, with further derating required at elevated ambient temperatures.

Time-Current Characteristic Curves—Average Melt  
(Full Size Curves Available)



PACKAGING CODE	
Packaging Code	Description
Blank	10 pieces
TR	500 pieces of fuses on 16mm tape-and-reel on a 7 inch reel per EIA Standard 481

**North America**

Cooper Electronic Technologies  
3601 Quantum Boulevard  
Boynton Beach, FL 33426-8638  
Tel: 1-561-752-5000  
Fax: 1-561-742-0134  
Toll Free: 1-888-414-2645

Cooper Bussmann  
P.O. Box 14460  
St. Louis, MO 63178-4460  
Tel: 1-636-394-2877  
Fax: 1-800-544-2570

**Europe**

Cooper Electronic Technologies  
Cooper (UK) Limited  
Burton-on-the-Wolds  
Leicestershire • LE12 5TH UK  
Tel: +44 (0) 1509 882 737  
Fax: +44 (0) 1509 882 786

**Asia Pacific**

Cooper Electronic Technologies  
1 Jalan Kilang Timor  
#06-01 Pacific Tech Centre  
Singapore 159303  
Tel: +65 278 6151  
Fax: +65 270 4160

## X-ON Electronics

Largest Supplier of Electrical and Electronic Components

*Click to view similar products for [Surface Mount Fuses](#) category:*

*Click to view products by [Eaton](#) manufacturer:*

Other Similar products are found below :

[FHC20402ADTP](#) [FT600-0500-2](#) [NFVC6125S0R50TRF](#) [SFT-125MA](#) [TF16SN2.00TTD](#) [41921000000](#) [TR/3216LR-500MA](#) [CCP2B20TTE](#)  
[TR-3216FF4-R](#) [SST 1-1K](#) [SST 5 -1K](#) [SST 2-1K](#) [TR2-TCP500-R](#) [F60C500V12AS](#) [FCC16501ABTP](#) [FCC16102ABTP](#) [FHC16322ADTP](#)  
[0308.250UR](#) [0308.375UR](#) [0308.500UR](#) [0308.750UR](#) [0308001.UR](#) [030801.5UR](#) [FCC16202ABTP](#) [3-122-714](#) [3-122-720](#) [3-122-718](#) [3-122-](#)  
[712](#) [3-122-716](#) [03081.25UR](#) [CQ06LF 5A 32V](#) [CQ06LT 5A 32V](#) [SET 2A 125V \(G\)](#) [SET 1A 125V \(G\)](#) [SEF 10A 125V \(G\)](#) [SEF 3A 125V \(G\)](#)  
[SEF 4A 125V \(G\)](#) [SEF 6A 125V \(G\)](#) [SEF 7A 125V \(G\)](#) [SET 4A 125V \(G\)](#) [SET 3A 125V \(G\)](#) [SET 5A 125V \(G\)](#) [SET 7A 125V \(G\)](#)  
[F0603G0R03FNTR](#) [SKY87604-12](#) [SKY87604-11](#) [SKY87604-13](#) [0154002.DRL](#) [0154008.DRL](#) [0154.125DRL](#)