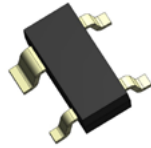


STS142XXXUXXX

TVS Diode array ESD suppressor



Product features

- Protects two I/O lines
- Low clamping voltage
- Low operating voltage
- Low capacitance
- Meets moisture sensitivity level (MSL) 3
- Molding compound flammability rating: UL 94V-0
- Termination finish: Tin

Applications

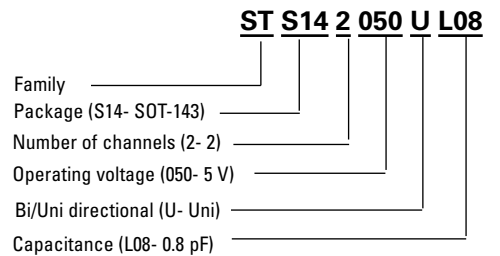
- ADSL lines
- I²C bus protection
- ISDN S/T interface
- Portable electronics
- WAN/LAN equipment
- Video line protection
- Microcontroller input protection
- T1/E1 secondary IC side protection
- Fire wire & USB
- Sensitive analog inputs
- Power over Ethernet

Environmental compliance and general specifications

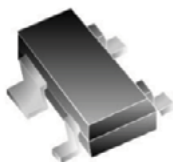
- IEC61000-4-2 (ESD)
 - Up to ±30 kV (air)
 - Up to ±30 kV (contact)
- IEC61000-4-5 (Lightning) Up to 10 A (8/20 μs)



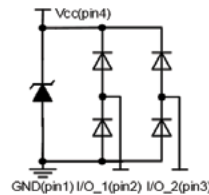
Ordering part number



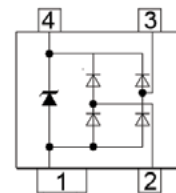
Pin out/functional diagram



SOT-143



Pin configuration



Top view



Powering Business Worldwide

Absolute maximum ratings

(+25 °C, RH=45%-75%, unless otherwise noted)

Parameter	Symbol	Value		Unit
		STS142050UL08	STS142700UL55	
Peak pulse power dissipation on 8/20 μs waveform	P_{pp}	60	150	W
ESD per IEC 61000-4-2 (Air)	V_{ESD}	+/-20	+/-30	kV
ESD per IEC 61000-4-2 (Contact)		+/-20	+/-30	
Lead soldering temperature	T_L	+260 (10 seconds)	+260 (10 seconds)	°C
Operating junction temperature range	T_J	-55 to +125	-55 to +125	°C
Storage temperature range	T_{STG}	-55 to +150	-55 to +150	°C

Electrical characteristics

(+25 °C)

STS142050UL08

Parameter	Test condition	Minimum	Typical	Maximum	Symbol (Units)
Reverse working voltage	-	-	-	5	V_{RWM} (V)
Reverse breakdown voltage	$I_T = 1\text{ mA}$	6.0	7.2	-	V_{BR} (V)
Reverse leakage current*	$V_{RWM} = 5\text{ V}$	-	-	1	I_R (μA)
Clamping voltage (I/O pin to Ground)	$I_{pp} = 1\text{ A}$, $t_p = 8/20\ \mu\text{s}$	-	9.5	10.5	V_F (V)
	$I_{pp} = 4.5\text{ A}$, $t_p = 8/20\ \mu\text{s}$	-	13	15	I_{pp} (A)
Clamping voltage (V_{CC} to Ground)	$I_{pp} = 8\text{ A}$, $t_p = 8/20\ \mu\text{s}$	-	12	15	V_C (V)
	$I_{pp} = 17\text{ A}$, $t_p = 8/20\ \mu\text{s}$	-	16.5	20	V_C (V)
Junction capacitance	$V_{RWM} = 0\text{ V}$, $f = 1\text{ MHz}$ Any I/O pin to GND	-	0.8	1.0	C_J (pF)
	$V_{RWM} = 0\text{ V}$, $f = 1\text{ MHz}$ Between I/O pins	-	0.4	0.6	C_J (pF)

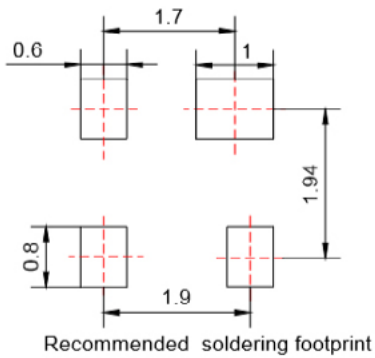
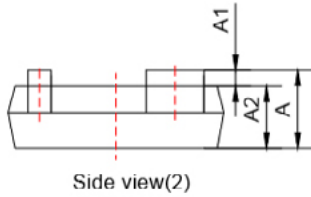
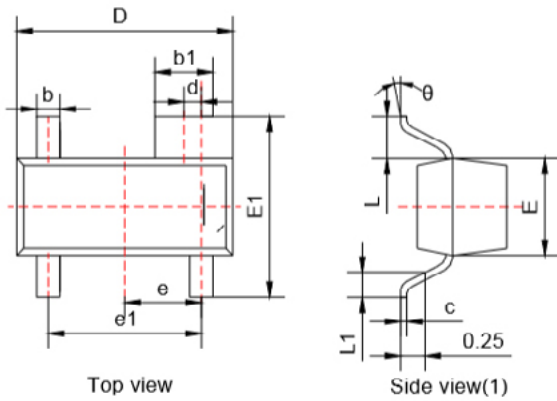
*I/O to GND for STS142050UL0

STS142700UL55

Parameter	Test condition	Minimum	Typical	Maximum	Symbol (Units)
Reverse working voltage	-	-	-	70	V_{RWM} (V)
Reverse breakdown voltage	$I_T = 50\ \mu\text{A}$	85	-	-	V_{BR} (V)
Reverse leakage current	$V_{RWM} = 70\text{ V}$	-	-	1	I_R (μA)
Clamping voltage** (I/O pin to Ground)	$I_{pp} = 1\text{ A}$, $t_p = 8/20\ \mu\text{s}$	-	1.0	1.5	V_F (V)
	$I_{pp} = 10\text{ A}$, $t_p = 8/20\ \mu\text{s}$	-	3.0	4.0	I_{pp} (A)
	$I_{pp} = 24\text{ A}$, $t_p = 8/20\ \mu\text{s}$	-	7.0	9.0	-
Junction capacitance	$V_{RWM} = 0\text{ V}$, $f = 1\text{ MHz}$ Any I/O pin to GND	-	0.55	1.5	C_J (pF)
	$V_{RWM} = 0\text{ V}$, $f = 1\text{ MHz}$ Between I/O pins	-	0.4	0.75	

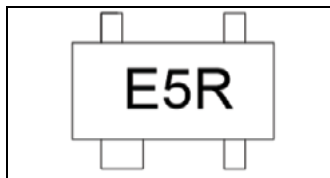
** Forward Clamping voltage for STS142700UL55

Mechanical parameters, pad layout- mm/inches

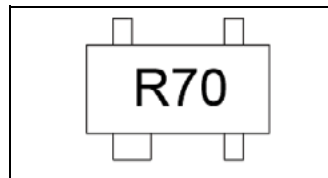


Dimension	Millimeters		Inches	
	Minimum	Maximum	Minimum	Maximum
A	0.90	1.15	0.035	0.045
A1	0.00	0.10	0.000	0.004
A2	0.90	1.05	0.035	0.041
b	0.30	0.50	0.012	0.020
b1	0.75	0.90	0.030	0.035
c	0.08	0.15	0.003	0.006
D	2.80	3.00	0.110	0.118
d	0.20 Typ.		0.008 Typ.	
E	1.20	1.40	0.047	0.055
E1	2.25	2.55	0.089	0.100
e	0.95 Typ.		0.037Typ.	
e1	1.80	2.00	0.071	0.079
L	0.55 Typ.		0.022 Typ.	
L1	0.30	0.50	0.012	0.020
e	0°	8°	0°	8°

Part marking



(STS142050UL08)

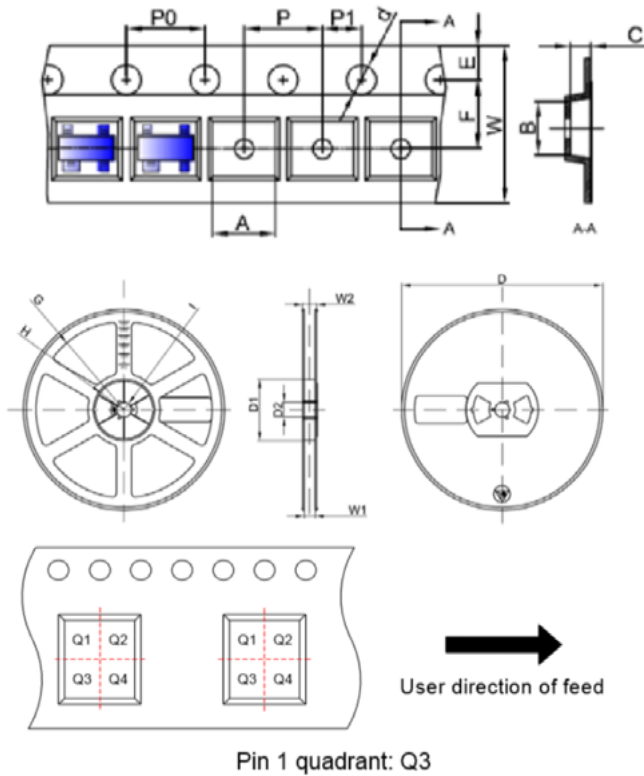


(STS142700UL55)

Packaging information mm/inches

Drawing not to scale.

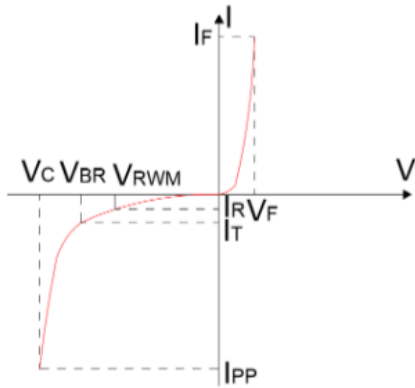
Supplied in tape and reel packaging, 3,000 parts per 7" diameter reel (EIA-481 compliant)



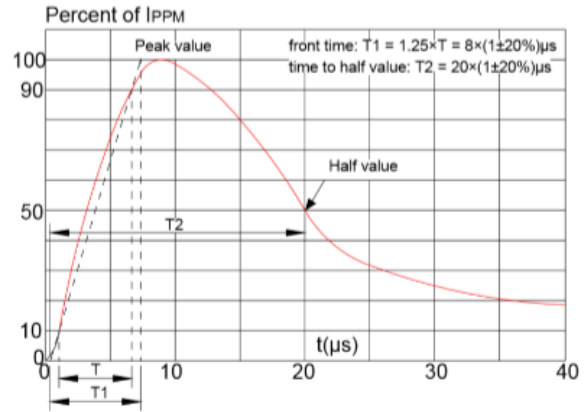
Symbol	Millimeters	Inches
A	3.19±0.1	0.126±0.004
B	2.80±0.1	0.110±0.004
C	1.31±0.1	0.052±0.004
d	Φ1.50±0.1	Φ0.059±0.004
E	1.75±0.1	0.069±0.004
F	3.50±0.1	0.138±0.004
P0	4.00±0.1	0.157±0.004
P	4.00±0.1	0.157±0.004
P1	2.00±0.1	0.079±0.004
W	8.00±0.1	0.315±0.004
D	Φ178±2	7.008±0.079
D1	54.40±1	2.142±0.039
D2	13.00±1	0.512±0.039
G	R78.00±1	3.071±0.039
H	R25.60±1	1.008±0.039
I	R6.50±1	0.256±0.039
W1	9.50±1	0.374±0.039
W2	12.30±1	0.484±0.039

Ratings and V-I characteristic curves (+25 °C unless otherwise noted)

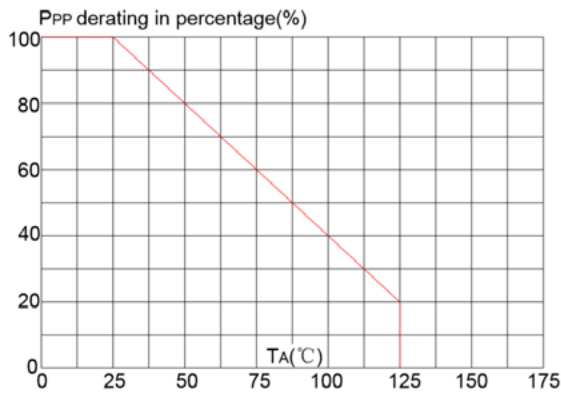
V- I curve characteristics (Uni-directional)



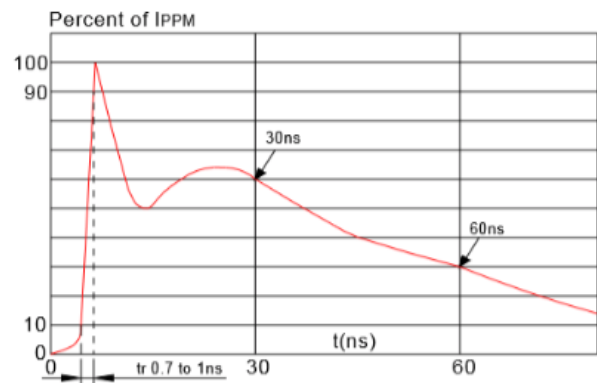
Pulse waveform (8/20 μs)



Pulse derating curve



ESD waveform



Solder reflow profile

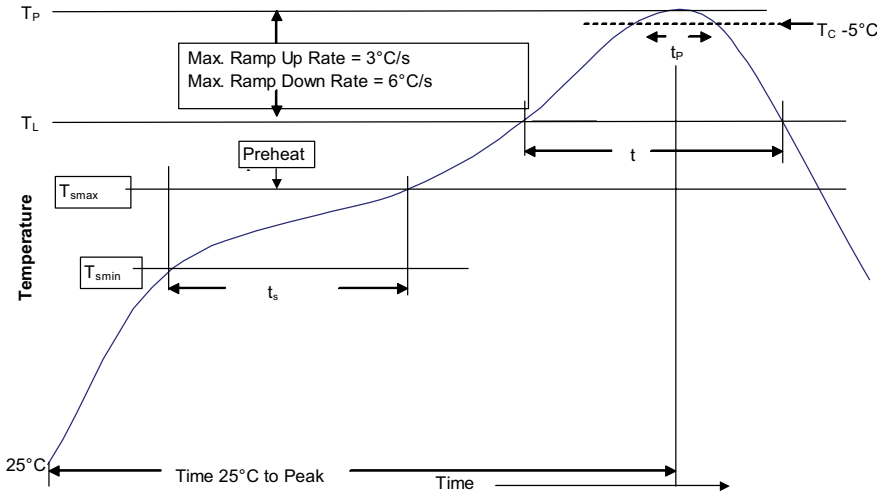


Table 1 - Standard SnPb solder (T_C)

Package thickness	Volume mm ³ <350	Volume mm ³ ≥350
<2.5 mm	235 °C	220 °C
≥2.5 mm	220 °C	220 °C

Table 2 - Lead (Pb) free solder (T_C)

Package thickness	Volume mm ³ <350	Volume mm ³ 350 - 2000	Volume mm ³ >2000
<1.6 mm	260 °C	260 °C	260 °C
1.6 – 2.5 mm	260 °C	250 °C	245 °C
>2.5 mm	250 °C	245 °C	245 °C

Reference J-STD-020

Profile feature	Standard SnPb solder	Lead (Pb) free solder
Preheat and soak	<ul style="list-style-type: none"> Temperature min. (T_{smin}) Temperature max. (T_{smax}) Time (T_{smin} to T_{smax}) (t_s) 	<ul style="list-style-type: none"> 100 °C 150 °C 60-120 seconds
Ramp up rate T_L to T_p	3 °C/ second max.	3 °C/ second max.
Liquidous temperature (T_L) Time (t_L) maintained above T_L	<ul style="list-style-type: none"> 183 °C 60-150 seconds 	<ul style="list-style-type: none"> 217 °C 60-150 seconds
Peak package body temperature (T_p)*	Table 1	Table 2
Time (t_p)* within 5 °C of the specified classification temperature (T_C)	20 seconds*	30 seconds*
Ramp-down rate (T_p to T_L)	6 °C/ second max.	6 °C/ second max.
Time 25 °C to peak temperature	6 minutes max.	8 minutes max.

* Tolerance for peak profile temperature (T_p) is defined as a supplier minimum and a user maximum.

Life Support Policy: Eaton does not authorize the use of any of its products for use in life support devices or systems without the express written approval of an officer of the Company. Life support systems are devices which support or sustain life, and whose failure to perform, when properly used in accordance with instructions for use provided in the labeling, can be reasonably expected to result in significant injury to the user.

Eaton reserves the right, without notice, to change design or construction of any products and to discontinue or limit distribution of any products. Eaton also reserves the right to change or update, without notice, any technical information contained in this bulletin.

Eaton
Electronics Division
1000 Eaton Boulevard
Cleveland, OH 44122
United States
Eaton.com/electronics

© 2020 Eaton
All Rights Reserved
Printed in USA
Publication No. 11146 BU-MC20128
September 2020

Eaton is a registered trademark.
All other trademarks are property of their respective owners.

Follow us on social media to get the latest product and support information.



X-ON Electronics

Largest Supplier of Electrical and Electronic Components

Click to view similar products for [ESD Suppressors / TVS Diodes](#) category:

Click to view products by [Eaton](#) manufacturer:

Other Similar products are found below :

[60KS200C](#) [D12V0H1U2WS-7](#) [D18V0L1B2LP-7B](#) [82356050220](#) [D5V0M5U6V-7](#) [NTE4902](#) [P4KE27CA](#) [P6KE11CA](#) [P6KE39CA-TP](#)
[P6KE8.2A](#) [SA110CA](#) [SA60CA](#) [SA64CA](#) [SMBJ12CATR](#) [SMBJ8.0A](#) [SMLJ30CA-TP](#) [ESD101-B1-02ELS E6327](#) [ESD112-B1-02EL E6327](#)
[ESD119B1W01005E6327XTSA1](#) [ESD5V0L1B02VH6327XTSA1](#) [ESD7451N2T5G](#) [19180-510](#) [CPDT-5V0USP-HF](#) [3.0SMCJ33CA-F](#)
[3.0SMCJ36A-F](#) [HSPC16701B02TP](#) [D3V3Q1B2DLP3-7](#) [D55V0M1B2WS-7](#) [DESD5V0U1BL-7B](#) [DRTR5V0U4SL-7](#) [SCM1293A-04SO](#)
[ESD200-B1-CSP0201 E6327](#) [ESD203-B1-02EL E6327](#) [SM12-7](#) [SMF8.0A-TP](#) [SMLJ45CA-TP](#) [CEN955 W/DATA](#) [82350120560](#)
[82356240030](#) [VESD12A1A-HD1-GS08](#) [CPDUR5V0R-HF](#) [CPDUR24V-HF](#) [CPDQC5V0U-HF](#) [CPDQC5V0USP-HF](#) [CPDQC5V0-HF](#)
[D1213A-01LP4-7B](#) [D1213A-02WL-7](#) [ESDLIN1524BJ-HQ](#) [5KP100A](#) [5KP15A](#)