

## Size A1 to A4 Offset Bolted Tag Fuse Links for General Industrial Applications

2A to 200A, 440-550-660-690Vac/250-350-460Vdc NIT, NET, TIA, TIS, TCP and TFP Red Spot Series



**Catalogue Symbol:**

NIT (amp rating)  
NET (amp rating)  
TIA (amp rating)  
TIS (amp rating)  
TCP (amp rating)  
TFP (amp rating)

**Class of Operation:**

gG and gM

**Fuse Size:**

BS88 ref A1 to A4

**Alternative Fuse Links:**

See technical data page 5

**Standards/Approvals:**

BS88-2 and IEC 60269-2

**Compatible Fuse Holders:**

See technical data page 5

**Description:**

A range of BS fuse links in sizes A1 to A4 specifically designed for the protection of general industrial applications e.g. power distribution, cable protection, motor protection.

**Packaging:** MOQ: NIT, NET, TIA and TIS 20 per pack  
TCP and TFP 10 per pack  
Packaging 100% recyclable

**Technical Data:**

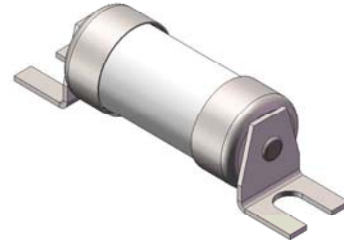
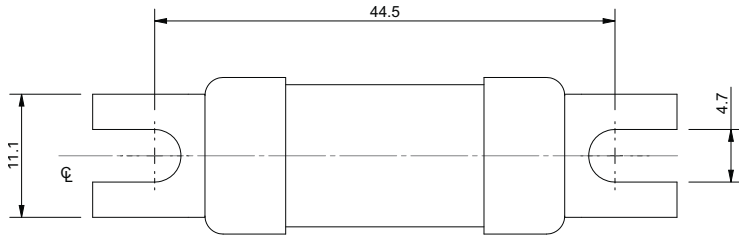
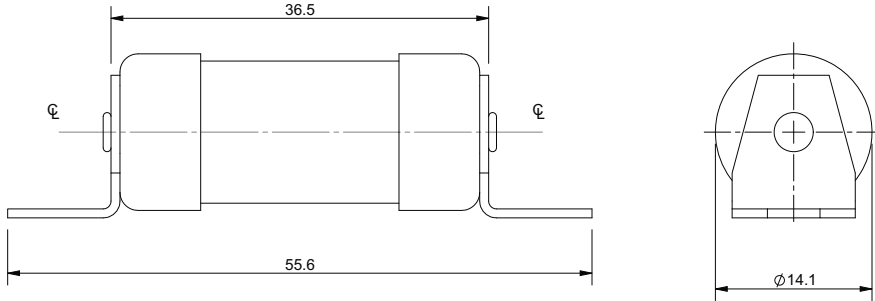
Rated Voltage: 550/660/690Vac and 250-460Vdc  
Rated Current: 2A to 200A  
Rated Breaking Capacity:  
AC: ASTA 20 certified to 80kA, generally at 660Volts to BS88 Part 2 1988 (IEC 60269-2)  
Min Interrupting Rating:  $1.6 \times I_n$

**Features:**

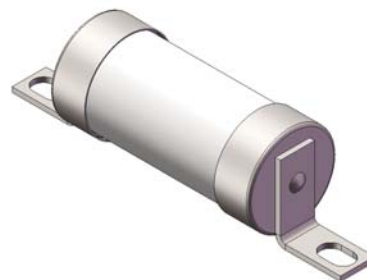
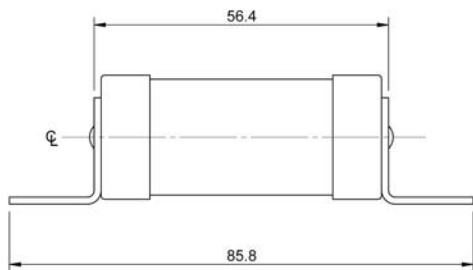
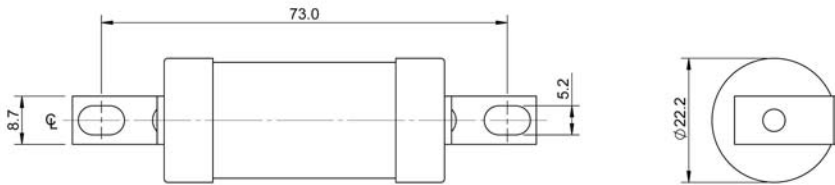
- Good peak and let-through current limitation
- 1:1:6 Selective coordinate ratio between 'minor' and 'major' fuse
- All Red Spot fuse links are suitable for motor protection as gM ratings enhance the breaking capacity capability
- All Red Spot fuse links have power loss values well within the limits of IEC 60269

**Size A1 to A4 Offset Bolted Tag Fuse Links for General Industrial Applications**  
2A to 200A, 440-550-660-690Vac/250-350-460Vdc NIT, NET, TIA, TIS, TCP and TFP Red Spot Series

**Dimensions - mm**  
NIT and NET



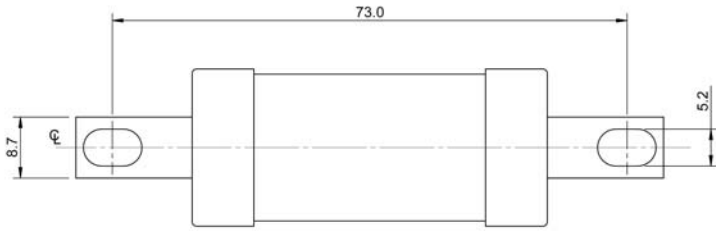
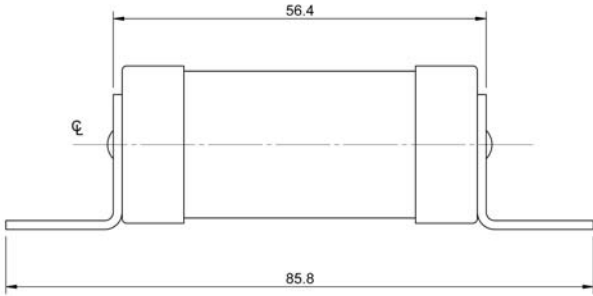
**TIA**



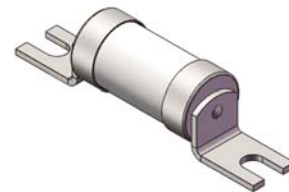
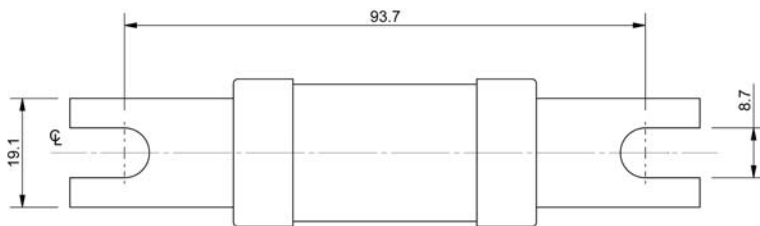
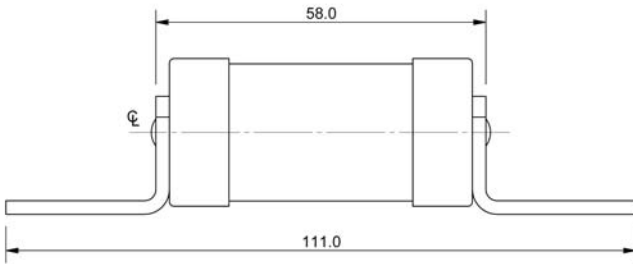
Size A1 to A4 Offset Bolted Tag Fuse Links for General Industrial Applications  
2A to 200A, 440-550-660-690Vac/250-350-460Vdc NIT, NET, TIA, TIS, TCP and TFP Red Spot Series

Dimensions - mm

TIS



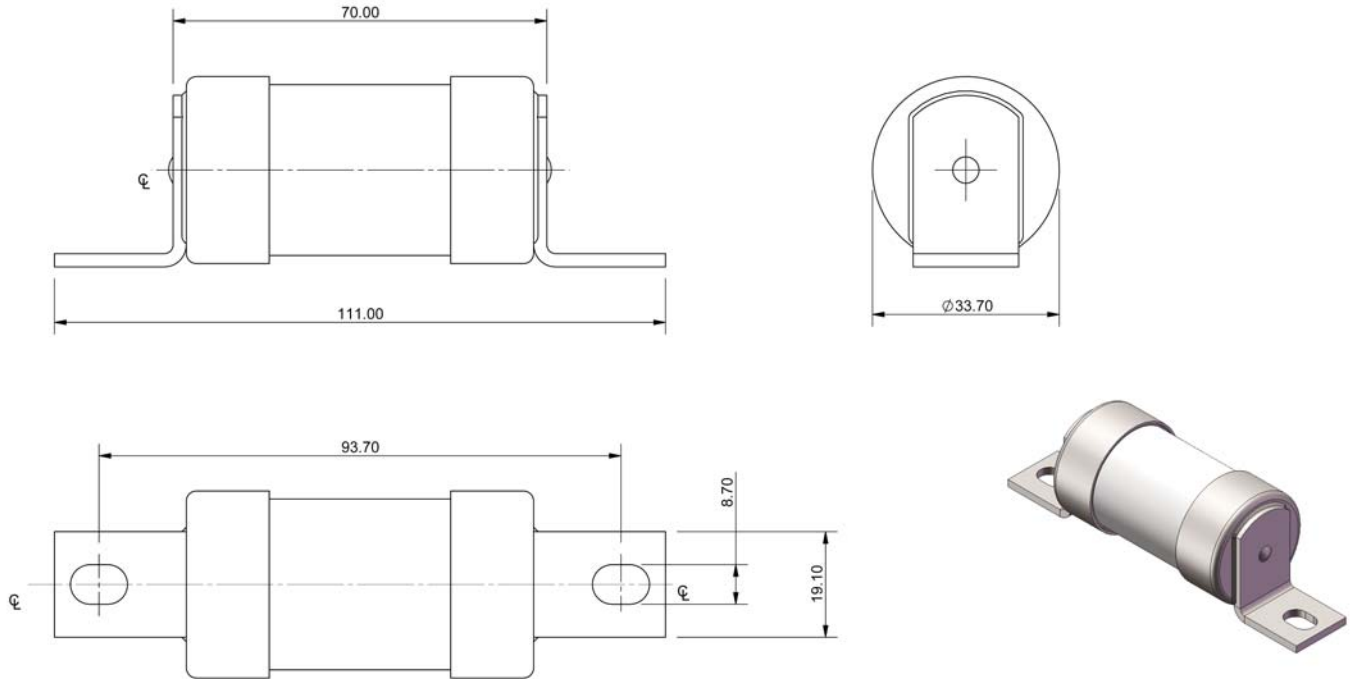
TCP



## Size A1 to A4 Offset Bolted Tag Fuse Links for General Industrial Applications 2A to 200A, 440-550-660-690Vac/250-350-460Vdc NIT, NET, TIA, TIS, TCP and TFP Red Spot Series

### Dimensions - mm

TFP



# Size A1 to A4 Offset Bolted Tag Fuse Links for General Industrial Applications

2A to 200A, 440-550-660-690Vac/250-350-460Vdc NIT, NET, TIA, TIS, TCP and TFP Red Spot Series

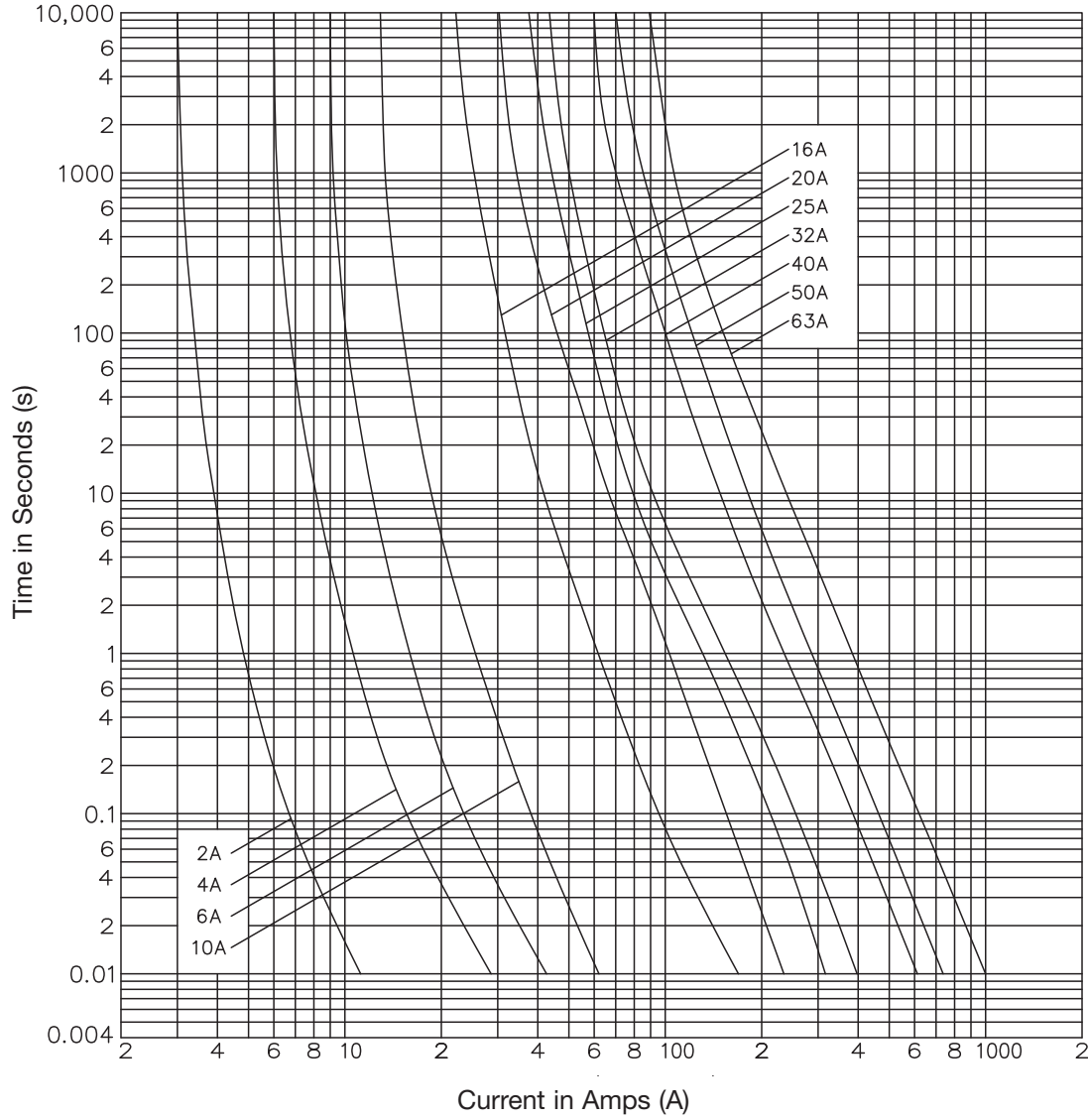
## Technical Data

Catalogue Numbers	BS88 reference	Rated Current (Amps)	Rated Voltage (Vac/dc)	Class of Operation	I <sup>2</sup> t (A <sup>2</sup> s)		Alternative Fuse Links	Compatible Fuse Holders					
					Pre-Arcing	Total at Rated Voltage							
NIT2	A1	2	550Vac/ 250Vdc	gG	1.3	5	NITD	RS20H or CM32FC					
NIT4		4			8	30							
NIT6		6			29	115							
NIT10		10			120	490							
NIT16		16			120	730							
NIT20		20			260	1700							
NET25		25	440Vac/ 250Vdc	gG	650	2900		CM32FC					
NET32		32			600	4050							
NET32M40		32M40		gM	2400	12,000							
NET32M50		32M50			3200	15,000							
NET32M63		32M63			5400	25,000							
TIA2		A2	2	660-690Vac/ 460Vdc	gG	2		15	H07-660 or AAO*	RS32H or CM32F			
TIA4	4		7			50							
TIA6	6		22			150							
TIA10	10		170			1000							
TIA16	16		150			1100							
TIA20	20		300			1670							
TIA25	25		500			3400							
TIA32	32		1080			5900							
TIA32M35	32M35		gM		1380	6500							
TIA32M40	32M40				1920	8380							
TIA32M50	32M50				3410	13,260							
TIA32M63	32M63				6500	25,000							
TIS35	A3				35	660-690Vac/ 460Vdc	gG	1380			6500	K07-660 or BAO*	RS63H or CM63F
TIS40					40			1920			8380		
TIS50		50	3410	13,260									
TIS63		63	6500	25,000									
TIS63M80		63M80	gM	14,000	66,000								
TIS63M100		63M100		17,000	100,000								
TCP32	A4	32	660-690Vac/ 460Vdc	gG	1080	5900	L14-660 or CEO*	RS100H					
TCP40		40			1920	8380							
TCP50		50			3410	13,260							
TCP63		63			6500	25,000							
TCP80		80			14,000	66,000							
TCP100		100			17,000	100,000							
TCP100M125		100M125		gM	25,000	140,000							
TCP100M160		100M160			62,000	270,000							
TCP100M200		100M200			105,000	430,000							
TFP125		N/A			125	660-690Vac/ 350Vdc			gG	25,000	140,000	M14-660 or DEO*	N/A
TFP160	160		62,000	270,000									
TFP200	200		105,000	430,000									
TFP200M250	200M250		gM	200,000	870,000								

\* AAO, BAO,CEO and DEO rated at 550Vac.

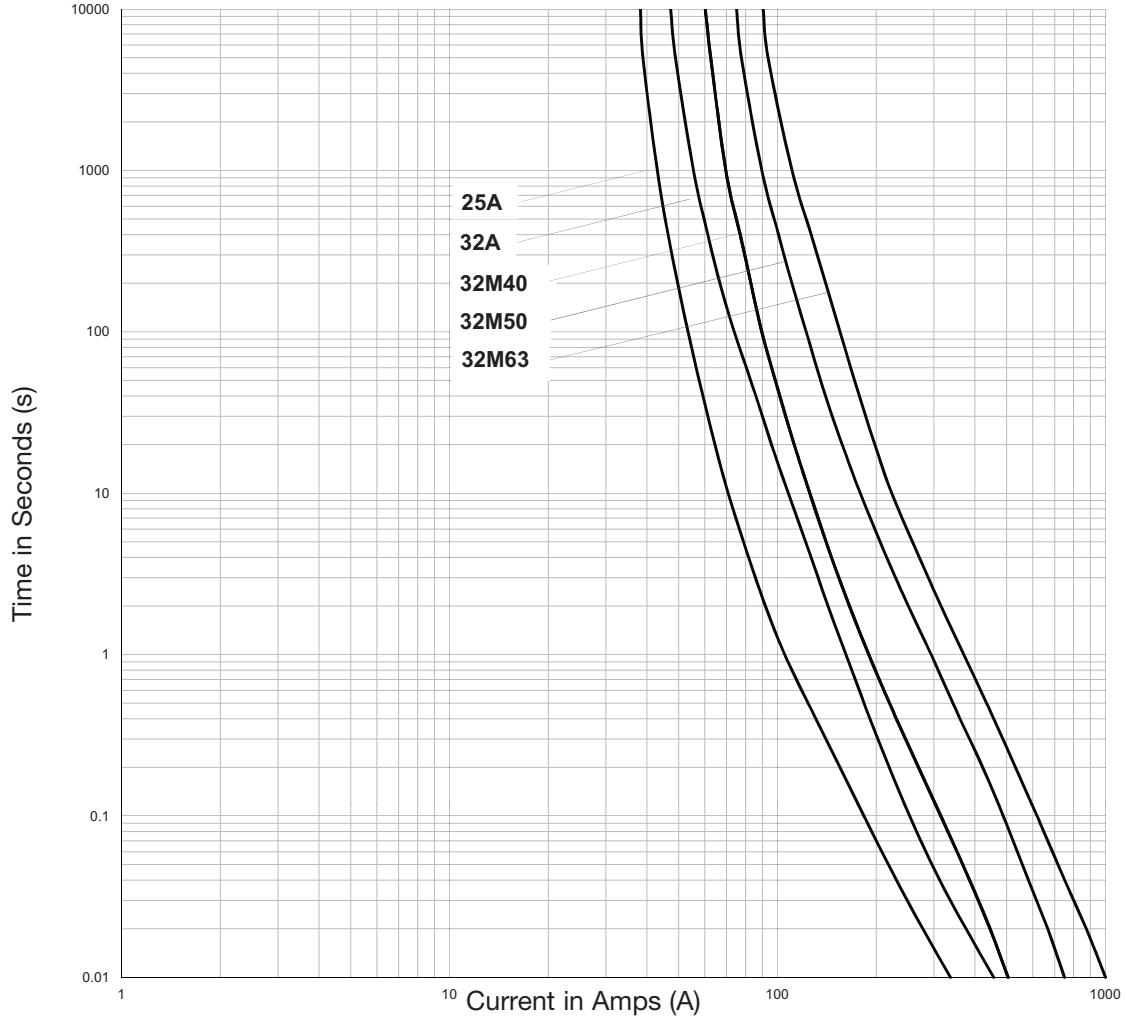
**Size A1 to A4 Offset Bolted Tag Fuse Links for General Industrial Applications**  
2A to 200A, 440-550-660-690Vac/250-350-460Vdc NIT, NET, TIA, TIS, TCP and TFP Red Spot Series

**Time-Current Characteristics NIT (2 to 20A only)**



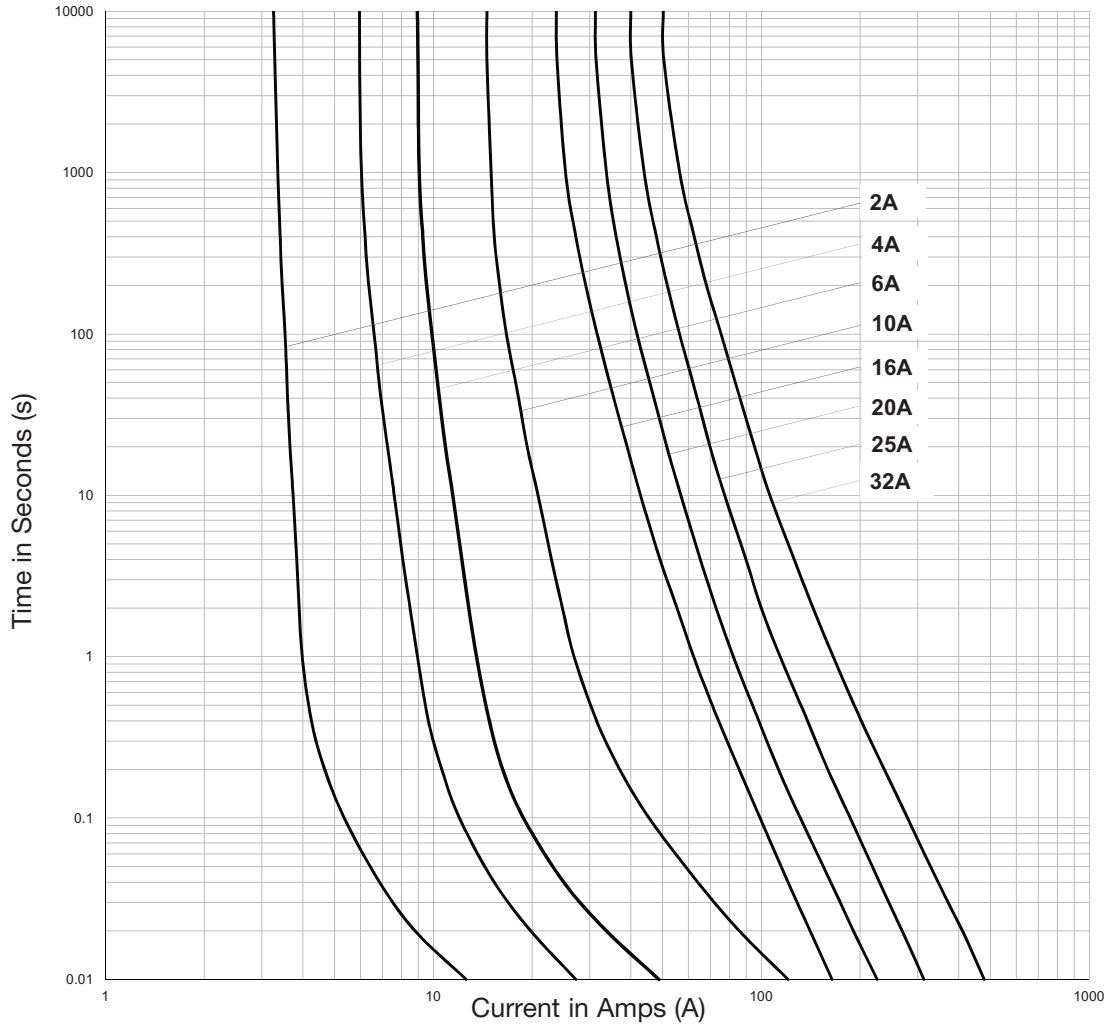
**Size A1 to A4 Offset Bolted Tag Fuse Links for General Industrial Applications**  
2A to 200A, 440-550-660-690Vac/250-350-460Vdc NIT, NET, TIA, TIS, TCP and TFP Red Spot Series

**Time-Current Characteristics NET**



**Size A1 to A4 Offset Bolted Tag Fuse Links for General Industrial Applications**  
2A to 200A, 440-550-660-690Vac/250-350-460Vdc NIT, NET, TIA, TIS, TCP and TFP Red Spot Series

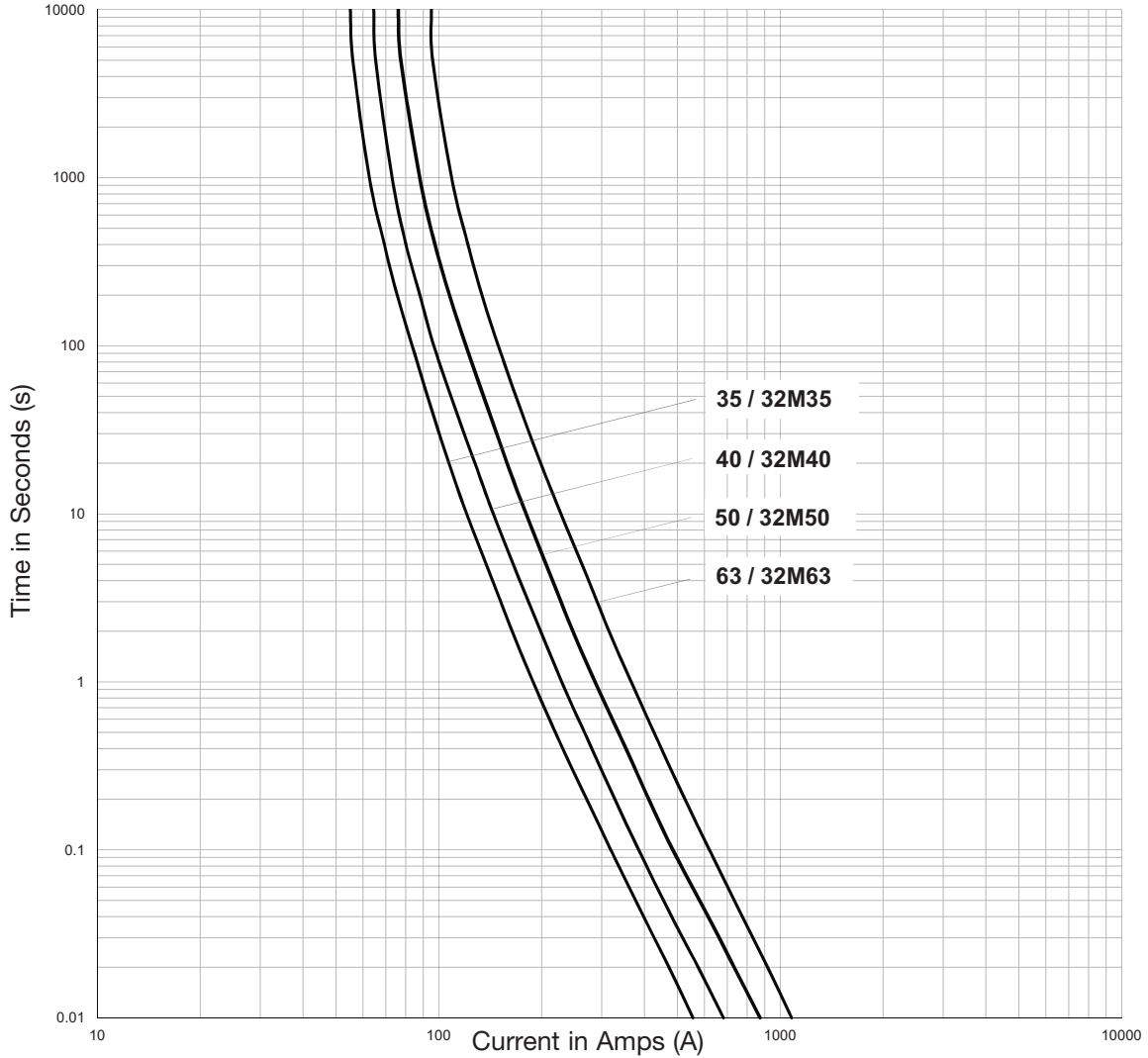
**Time-Current Characteristics TIA and TCP32**





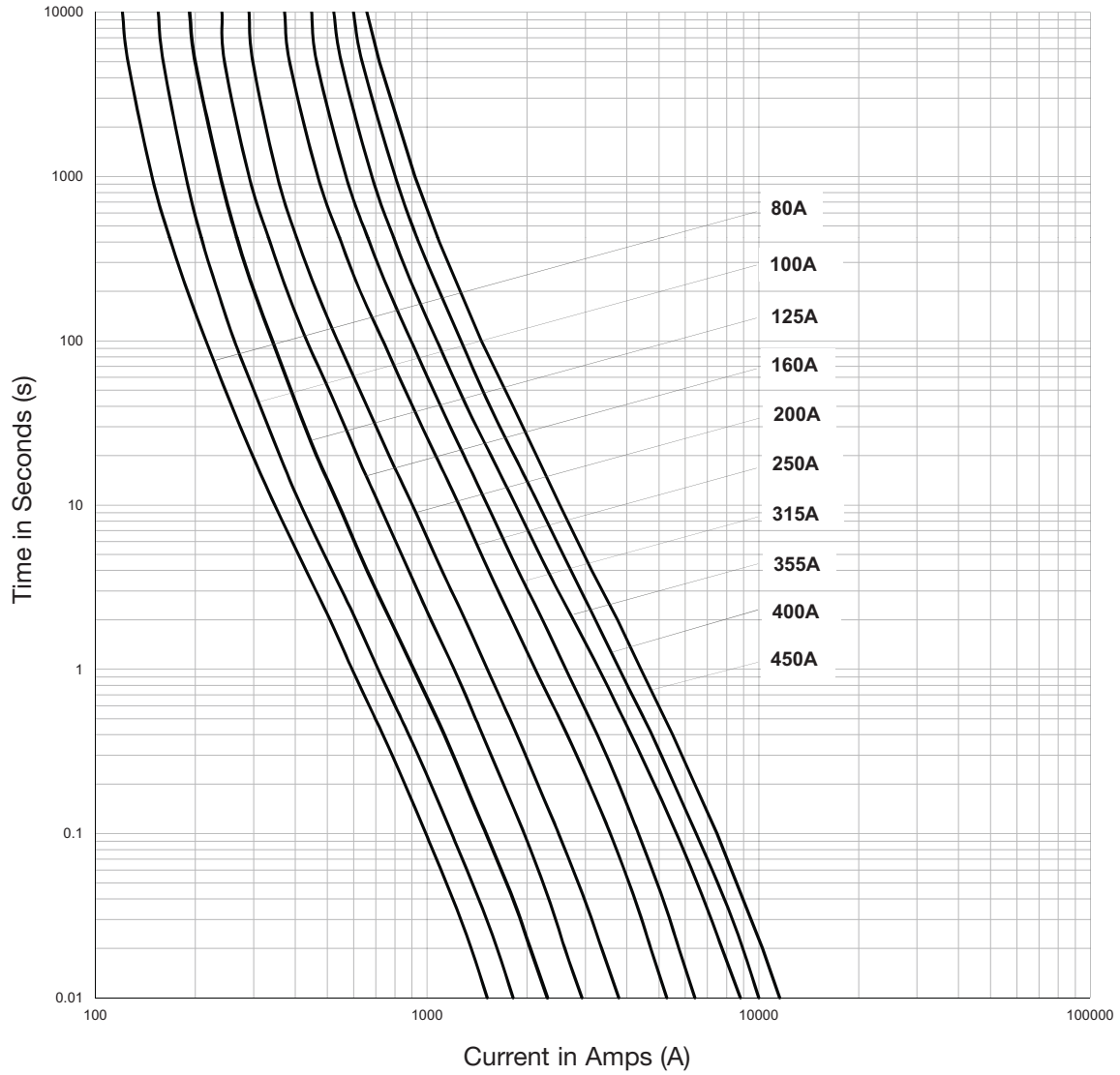
**Size A1 to A4 Offset Bolted Tag Fuse Links for General Industrial Applications**  
2A to 200A, 440-550-660-690Vac/250-350-460Vdc NIT, NET, TIA, TIS, TCP and TFP Red Spot Series

**Time-Current Characteristics - TIA32M, TIS35 to TIS63 and TCP40 to TCP63**



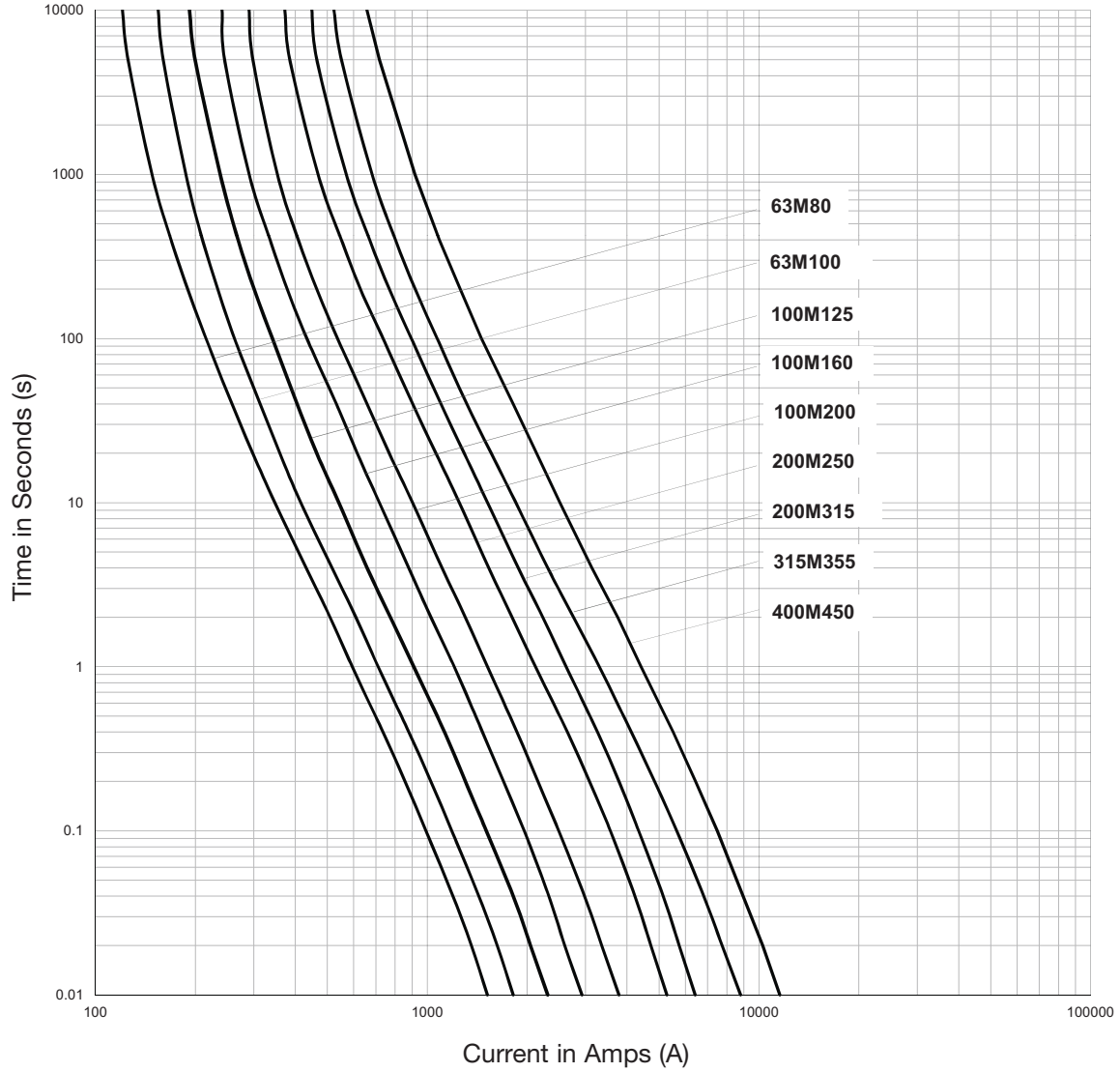
**Size A1 to A4 Offset Bolted Tag Fuse Links for General Industrial Applications**  
2A to 200A, 440-550-660-690Vac/250-350-460Vdc NIT, NET, TIA, TIS, TCP and TFP Red Spot Series

**Time-Current Characteristics - TCP80 to TCP100 and TFP125 to TFP200**



**Size A1 to A4 Offset Bolted Tag Fuse Links for General Industrial Applications**  
2A to 200A, 440-550-660-690Vac/250-350-460Vdc NIT, NET, TIA, TIS, TCP and TFP Red Spot Series

**Time-Current Characteristics - TIS63M, TCP100M and TFP200M**



## X-ON Electronics

Largest Supplier of Electrical and Electronic Components

*Click to view similar products for [Industrial & Electrical Fuses](#) category:*

*Click to view products by [Eaton](#) manufacturer:*

Other Similar products are found below :

[MTH-4](#) [MTH-8](#) [BP/NON-30](#) [NLN2](#) [NLN25](#) [LPS-RK-2SP](#) [FLSR100](#) [BLF6](#) [KLK003](#) [LPS-RK-100](#) [LPS-RK-15](#) [LPS-RK-20](#) [LPS-RK-70](#)  
[LPS-RK-90](#) [NLS10](#) [FRN-R-30ID](#) [FRS-R-20ID](#) [KLK015](#) [LDFJ350.X](#) [FUSE 5A/32V FK-1](#) [381455](#) [371050](#) [371055](#) [371060](#) [373455](#)  
[422110](#) [442015](#) [422104](#) [TPK-R-2A](#) [TPK-R-4A](#) [TPK-R-6A](#) [TPK-R-10A](#) [004184230](#) [004184232](#) [FPK-10A](#) [FPK-12A](#) [FPK-15A](#) [FPK-1A](#)  
[FPK-20A](#) [FPK-25A](#) [FPK-2A](#) [FPK-30A](#) [FPK-3A](#) [FPK-4A](#) [FPK-5A](#) [FPK-7A](#) [FPK-8A](#) [FPK-R-10A](#) [FPK-R-15A](#) [FPK-R-1A](#)