

# Telpower® Fuses

## 1 to 70 Amps, 170 Volts DC

TPS



Catalog Symbol: TPS  
 DC Power Distribution Fuses  
 Ampere Rating: 1 to 70A  
 Voltage Rating: 170Vdc  
 Interrupting Rating: 100,000A  
 Agency Information:  
 UL Recognized, File E56412, Guide JFHR2



### Catalog Numbers

TPS-1	TPS-6	TPS-25L	TPS-50
TPS-1L	TPS-6L	TPS-25V	TPS-50L
TPS-1LB	TPS-10	TPS-30	TPS-50V
TPS-2	TPS-10L	TPS-30L	TPS-60
TPS-2L	TPS-15	TPS-35	TPS-60L
TPS-3	TPS-15L	TPS-35L	TPS-70
TPS-3L	TPS-20	TPS-40	TPS-70L
TPS-5	TPS-20L	TPS-40L	TPS-70LB
TPS-5L	TPS-25	TPS-40V	—

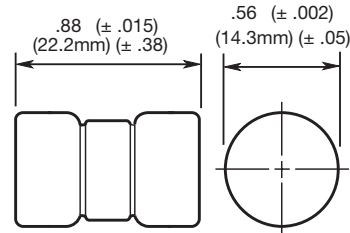
### General Information:

- TELPOWER® fuses bring modern power fuse design to the telecommunications industry.
- TELPOWER® fuse line is the first to be specifically designed to meet the unique needs of DC Power Distribution Systems.
- The U.L. Recognized ratings of 170Vdc and 100,000A interrupting rating along with the fuse's current-limiting capability make this fuse ideal for overcurrent protection on existing DC Distribution Systems.
- A unique BLUE label is used on all TELPOWER® fuses to designate their DC capability.
- Circuit board applications available.
- Silver-plated brass ferrules.
- Glass melamine tube.
- For use with Bussmann Fused Disconnect Switch **15800**.
- Spare Fuseholder: TPSFH-AS

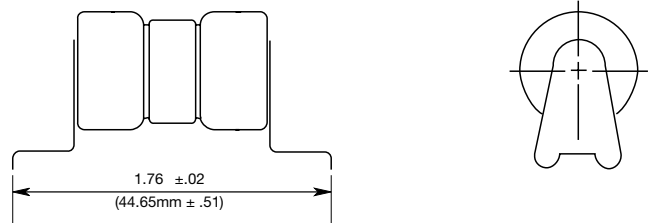
### Custom Designs

- Printed circuit board variations available.

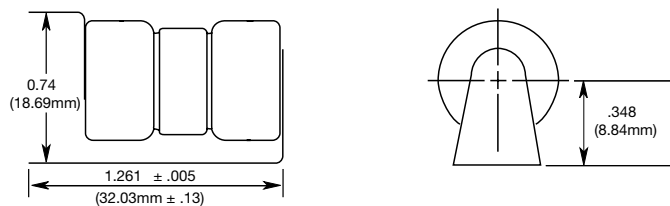
### Dimensional Data TPS-(AMP)



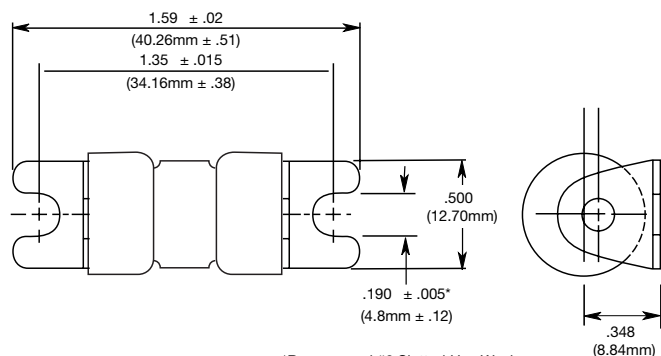
### TPS-(AMP)L



### TPS-(AMP)V



### TPS-(AMP)LB



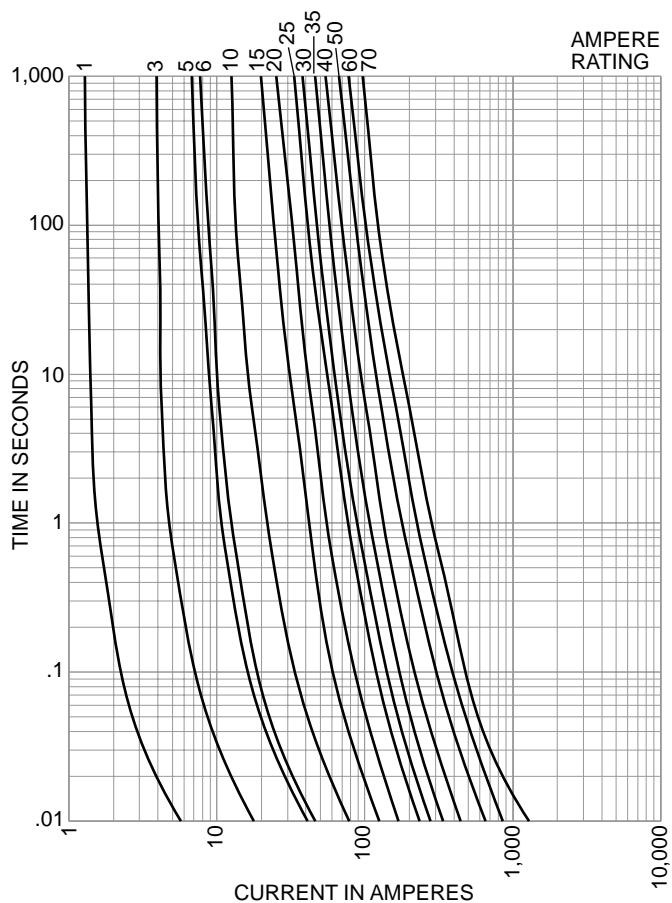
\*Recommend #8 Slotted Hex Washer Head Machine Screw for mounting

# Telpower® Fuses

1 to 70 Amps, 170 Volts DC

TPS

Time-Current Characteristic Curve



The only controlled copy of this Data Sheet is the electronic read-only version located on the Bussmann Network Drive. All other copies of this Data Sheet are by definition uncontrolled. This bulletin is intended to clearly present comprehensive product data and provide technical information that will help the end user with design applications. Bussmann reserves the right, without notice, to change design or construction of any products and to discontinue or limit distribution of any products. Bussmann also reserves the right to change or update, without notice, any technical information contained in this bulletin. Once a product has been selected, it should be tested by the user in all possible applications.

## X-ON Electronics

Largest Supplier of Electrical and Electronic Components

*Click to view similar products for [Specialty Fuses](#) category:*

*Click to view products by [Eaton](#) manufacturer:*

Other Similar products are found below :

[ECF-1](#) [ECF-1/2](#) [ECF-2](#) [ECF-3](#) [ECF-4](#) [170M1418](#) [N-2-1/2](#) [N-3-2/10](#) [S-2](#) [2D16](#) [170M1564D](#) [170M4241](#) [ABS-25](#) [ABS-30](#) [ABS-8](#) [FWP-25A14FI](#) [FWP-80A22FI](#) [30CIF06](#) [TJD](#) [TPL-BL](#) [KAB-25](#) [KLC40](#) [WKV](#) [10D27](#) [NITD25](#) [04450080FX850](#) [NITD16](#) [ECF-5](#) [TDC180-10](#) [TPM-25](#) [170M3509](#) [DEO200](#) [004117001](#) [45ET](#) [170M5810D](#) [10H07C](#) [SDL-2](#) [CC12M10A](#) [TDC600-2-R](#) [CBW57-ES-7A-5H](#) [CBW57-HB-15A-P](#) [CBW57-PS-15A-5X](#) [CBW58-HL4-30A-5C](#) [CBW58-HS-15A-5C](#) [CBW58-HS-20A-5C](#) [0AALBK300-BA](#) [170M8211](#) [STD2](#) [STD4](#) [4D27FB](#)