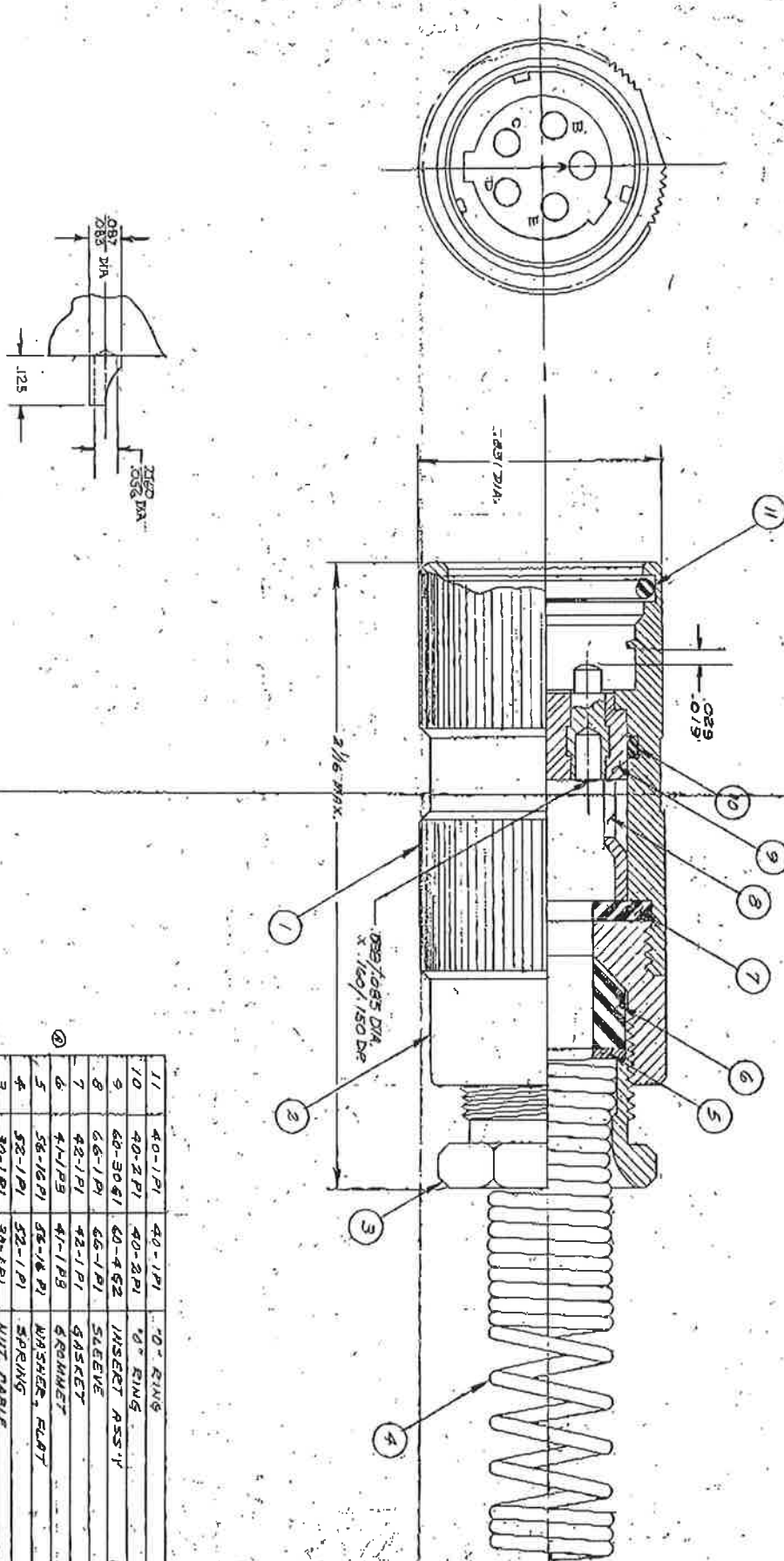


DIMENSIONS IN INCHES  
DO NOT SCALE PRINT



SOLDER TERMINATION: U-229/52

REVISIONS		UNLESS OTHERWISE SPECIFIED:		GENERAL CONNECTOR CORP.	
1	REV. TO PREVIOUS CON 229	1	40-1P1	40-1P1	70° RING
2	REV. TO PREVIOUS CON 229	2	40-2P1	40-2P1	70° RING
3	REV. TO PREVIOUS CON 229	3	40-3P1	40-3P1	70° RING
4	REV. TO PREVIOUS CON 229	4	40-4P1	40-4P1	70° RING
5	REV. TO PREVIOUS CON 229	5	40-5P1	40-5P1	70° RING
6	REV. TO PREVIOUS CON 229	6	40-6P1	40-6P1	70° RING
7	REV. TO PREVIOUS CON 229	7	40-7P1	40-7P1	70° RING
8	REV. TO PREVIOUS CON 229	8	40-8P1	40-8P1	70° RING
9	REV. TO PREVIOUS CON 229	9	40-9P1	40-9P1	70° RING
10	REV. TO PREVIOUS CON 229	10	40-10P1	40-10P1	70° RING
11	REV. TO PREVIOUS CON 229	11	40-11P1	40-11P1	70° RING
12	REV. TO PREVIOUS CON 229	12	40-12P1	40-12P1	70° RING
13	REV. TO PREVIOUS CON 229	13	40-13P1	40-13P1	70° RING
14	REV. TO PREVIOUS CON 229	14	40-14P1	40-14P1	70° RING
15	REV. TO PREVIOUS CON 229	15	40-15P1	40-15P1	70° RING
16	REV. TO PREVIOUS CON 229	16	40-16P1	40-16P1	70° RING
17	REV. TO PREVIOUS CON 229	17	40-17P1	40-17P1	70° RING
18	REV. TO PREVIOUS CON 229	18	40-18P1	40-18P1	70° RING
19	REV. TO PREVIOUS CON 229	19	40-19P1	40-19P1	70° RING
20	REV. TO PREVIOUS CON 229	20	40-20P1	40-20P1	70° RING
21	REV. TO PREVIOUS CON 229	21	40-21P1	40-21P1	70° RING
22	REV. TO PREVIOUS CON 229	22	40-22P1	40-22P1	70° RING
23	REV. TO PREVIOUS CON 229	23	40-23P1	40-23P1	70° RING
24	REV. TO PREVIOUS CON 229	24	40-24P1	40-24P1	70° RING
25	REV. TO PREVIOUS CON 229	25	40-25P1	40-25P1	70° RING
26	REV. TO PREVIOUS CON 229	26	40-26P1	40-26P1	70° RING
27	REV. TO PREVIOUS CON 229	27	40-27P1	40-27P1	70° RING
28	REV. TO PREVIOUS CON 229	28	40-28P1	40-28P1	70° RING
29	REV. TO PREVIOUS CON 229	29	40-29P1	40-29P1	70° RING
30	REV. TO PREVIOUS CON 229	30	40-30P1	40-30P1	70° RING
31	REV. TO PREVIOUS CON 229	31	40-31P1	40-31P1	70° RING
32	REV. TO PREVIOUS CON 229	32	40-32P1	40-32P1	70° RING
33	REV. TO PREVIOUS CON 229	33	40-33P1	40-33P1	70° RING
34	REV. TO PREVIOUS CON 229	34	40-34P1	40-34P1	70° RING
35	REV. TO PREVIOUS CON 229	35	40-35P1	40-35P1	70° RING
36	REV. TO PREVIOUS CON 229	36	40-36P1	40-36P1	70° RING
37	REV. TO PREVIOUS CON 229	37	40-37P1	40-37P1	70° RING
38	REV. TO PREVIOUS CON 229	38	40-38P1	40-38P1	70° RING
39	REV. TO PREVIOUS CON 229	39	40-39P1	40-39P1	70° RING
40	REV. TO PREVIOUS CON 229	40	40-40P1	40-40P1	70° RING
41	REV. TO PREVIOUS CON 229	41	40-41P1	40-41P1	70° RING
42	REV. TO PREVIOUS CON 229	42	40-42P1	40-42P1	70° RING
43	REV. TO PREVIOUS CON 229	43	40-43P1	40-43P1	70° RING
44	REV. TO PREVIOUS CON 229	44	40-44P1	40-44P1	70° RING
45	REV. TO PREVIOUS CON 229	45	40-45P1	40-45P1	70° RING
46	REV. TO PREVIOUS CON 229	46	40-46P1	40-46P1	70° RING
47	REV. TO PREVIOUS CON 229	47	40-47P1	40-47P1	70° RING
48	REV. TO PREVIOUS CON 229	48	40-48P1	40-48P1	70° RING
49	REV. TO PREVIOUS CON 229	49	40-49P1	40-49P1	70° RING
50	REV. TO PREVIOUS CON 229	50	40-50P1	40-50P1	70° RING
51	REV. TO PREVIOUS CON 229	51	40-51P1	40-51P1	70° RING
52	REV. TO PREVIOUS CON 229	52	40-52P1	40-52P1	70° RING
53	REV. TO PREVIOUS CON 229	53	40-53P1	40-53P1	70° RING
54	REV. TO PREVIOUS CON 229	54	40-54P1	40-54P1	70° RING
55	REV. TO PREVIOUS CON 229	55	40-55P1	40-55P1	70° RING
56	REV. TO PREVIOUS CON 229	56	40-56P1	40-56P1	70° RING
57	REV. TO PREVIOUS CON 229	57	40-57P1	40-57P1	70° RING
58	REV. TO PREVIOUS CON 229	58	40-58P1	40-58P1	70° RING
59	REV. TO PREVIOUS CON 229	59	40-59P1	40-59P1	70° RING
60	REV. TO PREVIOUS CON 229	60	40-60P1	40-60P1	70° RING
61	REV. TO PREVIOUS CON 229	61	40-61P1	40-61P1	70° RING
62	REV. TO PREVIOUS CON 229	62	40-62P1	40-62P1	70° RING
63	REV. TO PREVIOUS CON 229	63	40-63P1	40-63P1	70° RING
64	REV. TO PREVIOUS CON 229	64	40-64P1	40-64P1	70° RING
65	REV. TO PREVIOUS CON 229	65	40-65P1	40-65P1	70° RING
66	REV. TO PREVIOUS CON 229	66	40-66P1	40-66P1	70° RING
67	REV. TO PREVIOUS CON 229	67	40-67P1	40-67P1	70° RING
68	REV. TO PREVIOUS CON 229	68	40-68P1	40-68P1	70° RING
69	REV. TO PREVIOUS CON 229	69	40-69P1	40-69P1	70° RING
70	REV. TO PREVIOUS CON 229	70	40-70P1	40-70P1	70° RING
71	REV. TO PREVIOUS CON 229	71	40-71P1	40-71P1	70° RING
72	REV. TO PREVIOUS CON 229	72	40-72P1	40-72P1	70° RING
73	REV. TO PREVIOUS CON 229	73	40-73P1	40-73P1	70° RING
74	REV. TO PREVIOUS CON 229	74	40-74P1	40-74P1	70° RING
75	REV. TO PREVIOUS CON 229	75	40-75P1	40-75P1	70° RING
76	REV. TO PREVIOUS CON 229	76	40-76P1	40-76P1	70° RING
77	REV. TO PREVIOUS CON 229	77	40-77P1	40-77P1	70° RING
78	REV. TO PREVIOUS CON 229	78	40-78P1	40-78P1	70° RING
79	REV. TO PREVIOUS CON 229	79	40-79P1	40-79P1	70° RING
80	REV. TO PREVIOUS CON 229	80	40-80P1	40-80P1	70° RING
81	REV. TO PREVIOUS CON 229	81	40-81P1	40-81P1	70° RING
82	REV. TO PREVIOUS CON 229	82	40-82P1	40-82P1	70° RING
83	REV. TO PREVIOUS CON 229	83	40-83P1	40-83P1	70° RING
84	REV. TO PREVIOUS CON 229	84	40-84P1	40-84P1	70° RING
85	REV. TO PREVIOUS CON 229	85	40-85P1	40-85P1	70° RING
86	REV. TO PREVIOUS CON 229	86	40-86P1	40-86P1	70° RING
87	REV. TO PREVIOUS CON 229	87	40-87P1	40-87P1	70° RING
88	REV. TO PREVIOUS CON 229	88	40-88P1	40-88P1	70° RING
89	REV. TO PREVIOUS CON 229	89	40-89P1	40-89P1	70° RING
90	REV. TO PREVIOUS CON 229	90	40-90P1	40-90P1	70° RING
91	REV. TO PREVIOUS CON 229	91	40-91P1	40-91P1	70° RING
92	REV. TO PREVIOUS CON 229	92	40-92P1	40-92P1	70° RING
93	REV. TO PREVIOUS CON 229	93	40-93P1	40-93P1	70° RING
94	REV. TO PREVIOUS CON 229	94	40-94P1	40-94P1	70° RING
95	REV. TO PREVIOUS CON 229	95	40-95P1	40-95P1	70° RING
96	REV. TO PREVIOUS CON 229	96	40-96P1	40-96P1	70° RING
97	REV. TO PREVIOUS CON 229	97	40-97P1	40-97P1	70° RING
98	REV. TO PREVIOUS CON 229	98	40-98P1	40-98P1	70° RING
99	REV. TO PREVIOUS CON 229	99	40-99P1	40-99P1	70° RING
100	REV. TO PREVIOUS CON 229	100	40-100P1	40-100P1	70° RING

U-229/11  
 U-229/11  
 U-229/11

## X-ON Electronics

Largest Supplier of Electrical and Electronic Components

*Click to view similar products for [eaton](#) manufacturer:*

Other Similar products are found below :

[BK-MDL-3-R](#) [BK1-S506-500-R](#) [BK1-S506-6-3-R](#) [BK1-S506-2-R](#) [MPI4040R4-1R5-R](#) [TDC600-10A](#) [89096-015](#) [8946K153](#) [8961K155](#)  
[M22-DL-W-X0](#) [M22-D-R-GB0/K11](#) [M22-L-R/R](#) [M22S-ST-GB12](#) [630NHG3B](#) [63ET](#) [6422](#) [6580](#) [CTX20-16-52LP-R](#) [CWL530FI](#)  
[CXM/CO/GP/R/BB](#) [6HD36](#) [714125](#) [MBO-2](#) [ESR5-NO-41-24VAC-DC](#) [7314K36](#) [7321K2](#) [F02A-1-1/2A](#) [F02A-1-1/2AS](#) [F02A-1AS](#) [F02A-2AS](#) [F02A-3/4A](#) [F03A250V12A](#) [F03B125V4A](#) [MCR-4](#) [MDA-2-8/10-R](#) [MDA-30A](#) [MDA-V-1/16](#) [F60C500V10AS](#) [F60C500V15AS](#)  
[7563K84](#) [7634K36](#) [MDQ-3/16](#) [MDQ-7/10](#) [MDQ-V-1/10](#) [MDQ-V-1-1/4](#) [MDQ-V-1/16](#) [MDQ-V-1/2](#) [MDQ-V-1/4](#) [MDQ-V-3/16](#) [MDQ-V-3/8](#)