



Terminal Block

SCREWLESS TYPE TERMINAL BLOCK

TÜV R50257486
E133988(R)

ETBM50 SERIES

SCREWLESS TYPE

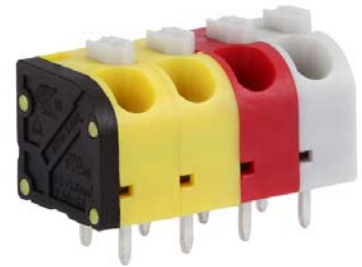
PITCH=5.0 / 10.0mm

FEATURES

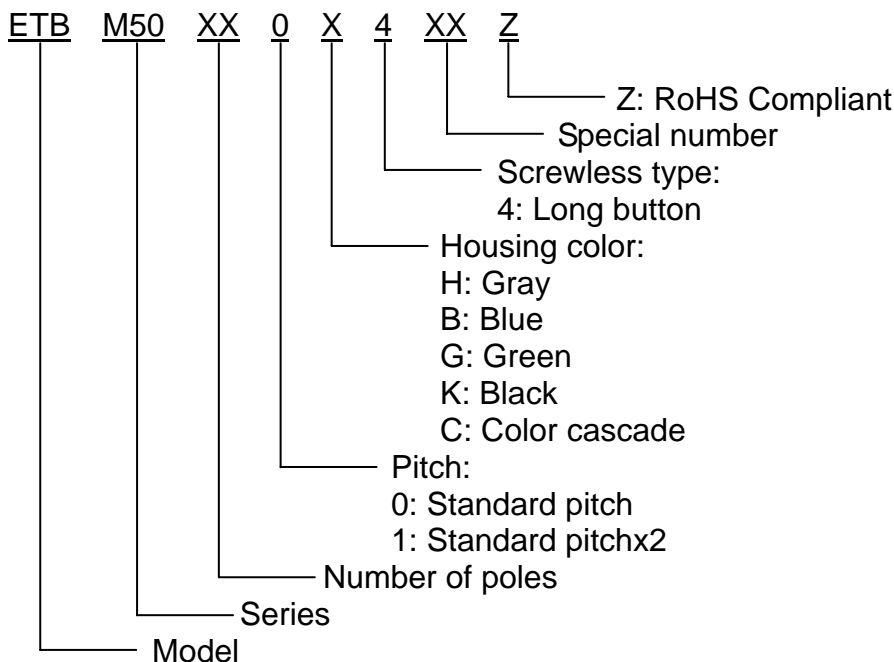
- Easy to assemble for any number of positions
- End stackable without any loss of P.C.B. space
- UL 94V-0 grade fire retardant engineering plastic used for the housing
- Be capable of clamping a wide range of wire diameters
- Screwless design can reduce time for connecting wire

SPECIFICATIONS

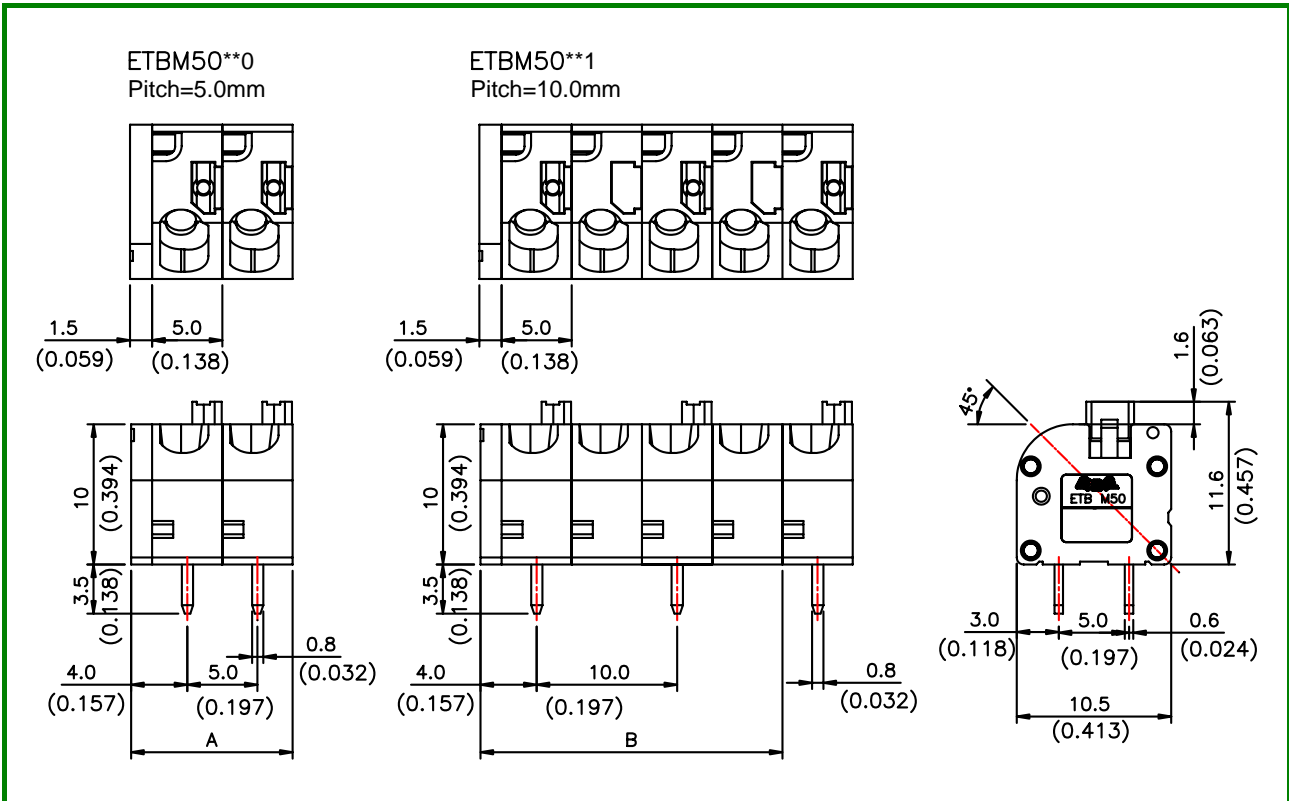
- Pitch 5.0mm, 10.0mm
- Wire range 26~14 AWG
- No. of pole per block 2P to 24P
- Rating 10 Amp, 300 VAC
- Housing PA66
- Terminals Tin plated over Copper Alloy
- Springs Stainless Steel
- Push button PA66
- Operating temperature -30°C ~ +110°C
(includes temperature rise limit)
- Stripping length 9mm
- UL Approval 300V, 10A, 26~14 AWG
- TUV Approval 250V, 0.34~0.75mm²



PART NUMBERING SYSTEM



■ DRAWING



POLE DIM.	2	3	4	5	6	7	8	9	10	11	12	13
A	11.5 (0.453)	16.5 (0.650)	21.5 (0.846)	26.5 (1.043)	31.5 (1.240)	36.5 (1.437)	41.5 (1.634)	46.5 (1.831)	51.5 (2.028)	56.5 (2.224)	61.5 (2.421)	66.5 (2.618)
B	16.5 (0.650)	26.5 (1.044)	36.5 (1.437)	46.5 (1.831)	56.5 (2.224)	66.5 (2.618)	76.5 (3.012)	86.5 (3.406)	96.5 (3.799)	106.5 (4.193)	116.5 (4.587)	
POLE DIM.	14	15	16	17	18	19	20	21	22	23	24	
A	71.5 (2.815)	76.5 (3.012)	81.5 (3.209)	86.5 (3.406)	91.5 (3.602)	96.5 (3.799)	101.5 (3.996)	106.5 (4.193)	111.5 (4.390)	116.5 (4.587)	121.5 (4.783)	

X-ON Electronics

Largest Supplier of Electrical and Electronic Components

Click to view similar products for [Pluggable Terminal Blocks](#) category:

Click to view products by [ECC manufacturer](#):

Other Similar products are found below :

[57.404.7553](#) [57.504.0053.7](#) [57.510.0053](#) [57.910.6153](#) [01.112.1453](#) [CTB932VE/6](#) [MC 1.5/ 6-ST-3.5 GY AU](#) [ET02015000J0G](#) [734-104](#) [734-302](#) [734-304](#) [8-141-P](#) [FKCT 2.5/ 3-ST KMGY](#) [860505](#) [860508](#) [860516](#) [860810](#) [861908](#) [GBPACX-12](#) [93.731.4953.0](#) [PV05-5,08-K](#) [PVP02-5,00](#) [PVP04-3,50](#) [PVS02-5,00](#) [1-1986160-3](#) [H-10](#) [1546228-5](#) [ELFH09150](#) [ELFH16150](#) [ELFP03110](#) [ELFT06250](#) [ELFT07250](#) [ELVF09400](#) [ELVP03100](#) [ELXH03100](#) [ELXH071G0E](#) [ELXP041G0](#) [ELXT046G0](#) [1700101](#) [1700410](#) [1700425](#) [1703176](#) [1705229](#) [1710175](#) [1714537](#) [1717806](#) [1719600](#) [1729386](#) [1734692](#) [1734795](#)