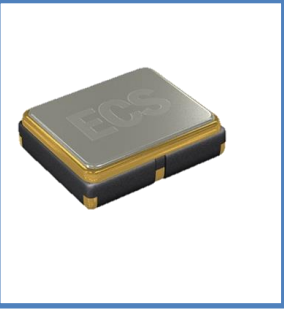


ECS-2025 (2.5V) and ECS-2033 (3.3V) subminiature SMD oscillators. Ideal for today's high density applications.

[Request a Sample](#)

### OPERATING CONDITIONS / ELECTRICAL CHARACTERISTICS

#### ECS-2025/2033



- Low Voltage
- 2.5 x 2.0 mm Footprint
- Low Current Consumption
- PbFree/RoHS Compliant

| Parameters            | Conditions                  | ECS-2025 (+2.5V) |      |         | ECS-2033 (+3.3V) |      |         | Units |
|-----------------------|-----------------------------|------------------|------|---------|------------------|------|---------|-------|
|                       |                             | MIN              | TYP  | MAX     | MIN              | TYP  | MAX     |       |
| Frequency Range       |                             | 0.750            |      | 75.000  | 0.750            |      | 75.000  | MHz   |
| Operating Temperature | Standard                    | -10              |      | +70     | -10              |      | +70     | °C    |
|                       | Extended (N Option)         | -40              |      | +85     | -40              |      | +85     | °C    |
| Storage Temperature   |                             | -55              |      | +100    | -55              |      | +100    | °C    |
| Supply Voltage        | VDD                         | +2.375           | +2.5 | +2.625  | +3.135           | +3.3 | +3.465  | VDC   |
| Frequency Stability*  | Option A                    |                  |      | ±100    |                  |      | ±100    | PPM   |
|                       | Option B                    |                  |      | ±50     |                  |      | ±50     | PPM   |
|                       | Option C                    |                  |      | ±25     |                  |      | ±25     | PPM   |
| Input Current         | 0.75 ~ 20.0 MHz             |                  |      | 5       |                  |      | 7       | mA    |
|                       | 20.1 ~ 40.0 MHz             |                  |      | 9       |                  |      | 13      | mA    |
|                       | 40.1 ~ 60.0 MHz             |                  |      | 11      |                  |      | 19      | mA    |
|                       | 60.1 ~ 75.0 MHz             |                  |      | 14      |                  |      | 24      | mA    |
| Stand-by Current      | Pin 1 = VIL                 |                  |      | 10      |                  |      | 10      | µA    |
| Output Symmetry       | @50% VDD Level              |                  |      | 40/60   |                  |      | 45/55   | %     |
|                       | @50% VDD Level (**T Option) |                  |      | 45/55   |                  |      | -       |       |
| Rise and Fall Times   | 10% VDD to 90% Level        |                  |      | 10      |                  |      | 10      | ns    |
| "0" Level             | VOL                         |                  |      | 10% VDD |                  |      | 10% VDD | VDC   |
| "1" Level             | VOH                         | 90% VDD          |      |         | 90% VDD          |      |         | VDC   |
| Output Load           | CMOS                        |                  |      | 15      |                  |      | 15      | pF    |
| Disable Delay Time    |                             |                  |      | 150     |                  |      | 150     | ns    |
| Startup Time          |                             |                  |      | 10      |                  |      | 10      | ms    |
| Aging                 |                             |                  |      | ±5      |                  |      | ±5      | PPM   |

\* Note: Inclusive of 25°C tolerance, operating temperature, input voltage change, load change, shock and vibration.

\*\* Symmetry "T" option applies to ECS-2025 Series only.

### Part Numbering Guide: Example ECS-2033-200-BN-TR

ECS - Series - Frequency Abbreviations - Stability Tolerance - Temperature - Output Symmetry - Packaging

|     |                              |              |  |   |                              |                                 |
|-----|------------------------------|--------------|--|---|------------------------------|---------------------------------|
| ECS | 2025 = +2.5V<br>2033 = +3.3V | 200 = 20 MHz | A = ±100 ppm<br>B = ±50 ppm<br>C = ±25 ppm | Blank = -10 ~ +70°C<br>M = -20 ~ +70°C<br>N = -40 ~ +85°C<br>U = -55 ~ +125°C | Blank = 40/60<br>**T = 45/55 | TR = 1K<br>TR3 = 3K<br>Qty/Reel |
|-----|------------------------------|--------------|--|---|------------------------------|---------------------------------|

**Package Dimensions (mm)**

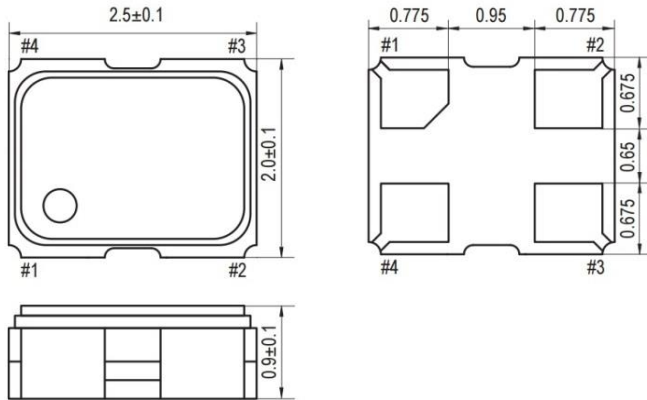


Figure 1) Top, Side, and Bottom views

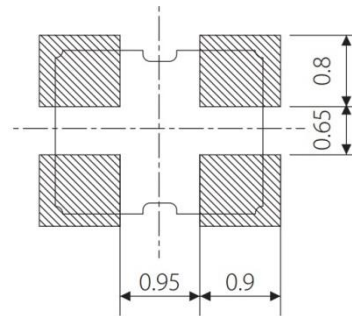


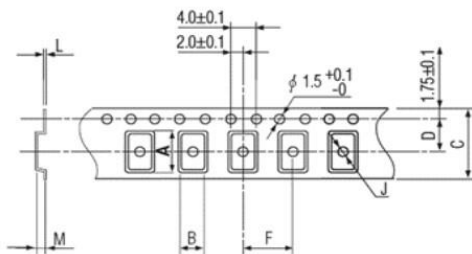
Figure 2) Land Pattern

| Pin Connections |           |
|-----------------|-----------|
| #1              | Tri-State |
| #2              | Ground    |
| #3              | Output    |
| #4              | VDD       |

| Tri-State Control Voltage |                |
|---------------------------|----------------|
| Pad 1                     | Pad 3          |
| Open                      | Oscillation    |
| VIH 70% VDD Min.          | Oscillation    |
| VIL 30% VDD Max.          | No Oscillation |

Note: Internal crystal oscillation to be halted (Pin #1=VIL)

**Tape Dimensions (mm)**



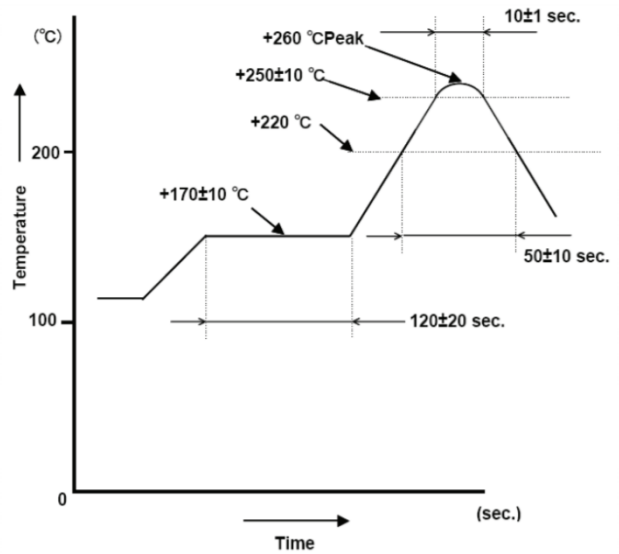
| A   | B   | C   | D   | F   | J   | L    | M   | Reel Dia. |
|-----|-----|-----|-----|-----|-----|------|-----|-----------|
| 2.8 | 2.3 | 8.0 | 3.5 | 4.0 | 1.0 | 0.25 | 1.1 | 180       |

Figure 3) Pocket Tape Dimensions

| Package Data |                               |
|--------------|-------------------------------|
| Item         | Description                   |
| Lid          | Metal                         |
| Base         | Ceramic                       |
| Sealing      | AuSn                          |
| Terminal     | Tungsten (metalized)          |
| Plating      | Gold/Nickel (Surface)/(Under) |
| RoHS         | Compliant (Pb Free)           |

**Frequency Abbreviations**

| FREQUENCY MHz | CODE  |
|---------------|-------|
| 3.579545      | 035   |
| 3.6864        | 036   |
| 4.000         | 040   |
| 6.000         | 060   |
| 7.3728        | 073   |
| 8.000         | 080   |
| 10.000        | 100   |
| 12.000        | 120   |
| 13.000        | 130   |
| 14.31818      | 143   |
| 14.7456       | 147.4 |
| 16.000        | 160   |
| 20.000        | 200   |
| 24.000        | 240   |
| 25.000        | 250   |
| 27.000        | 270   |
| 30.000        | 300   |
| 32.000        | 320   |
| 40.000        | 400   |
| 48.000        | 480   |
| 50.000        | 500   |



*Figure 4) Suggested Reflow Profile*

## X-ON Electronics

Largest Supplier of Electrical and Electronic Components

*Click to view similar products for [Standard Clock Oscillators](#) category:*

*Click to view products by [ECS Inc](#) manufacturer:*

Other Similar products are found below :

[601252](#) [F335-25](#) [F535L-33.333](#) [F535L-50](#) [ASV-20.000MHZ-LR-T](#) [ECS-2018-160-BN-TR](#) [MXO45HS-2C-66.6666MHZ](#) [SiT1602BI-22-33E-50.000000E](#) [SiT8209AI-32-33E-125.000000](#) [SIT8918AA-11-33S-50.000000G](#) [SM4420TEV-40.0M-T1K](#) [F335-24](#) [F335-40](#) [F535L-10](#) [F535L-12](#) [F535L-16](#) [F535L-24](#) [F535L-27](#) [F535L-48](#) [PE7744DW-100.0M](#) [CSX-750FCC14745600T](#) [ASF1-3.686MHZ-N-K-S](#) [XO57CTECNA3M6864](#) [ECS-2100A-147.4](#) [601251](#) [EP16E7E2H26.000MTR](#) [SIT8918AA-11-33S-16.000000G](#) [XO3003](#) [9120AC-2D2-33E212.500000](#) [9102AI-243N25E100.00000](#) [8208AC-82-18E-25.00000](#) [ASDK2-32.768KHZ-LR-T3](#) [8008AI-72-XXE-24.545454E](#) [8004AC-13-33E-133.33000X](#) [AS-4.9152-16-SMD-TR](#) [ASFL1-48.000MHZ-LC-T](#) [SIT8920AM-31-33E-25.0000](#) [DSC1028DI2-019.2000](#) [9121AC-2C3-25E100.00000](#) [9102AI-233N33E100.00000X](#) [9102AI-233N25E200.00000](#) [9102AI-232H25S125.00000](#) [9102AI-133N25E200.00000](#) [9102AC-283N25E200.00000](#) [9001AC-33-33E1-30.000](#) [3921AI-2CF-33NZ125.000000](#) [5730-1SF](#) [PXA000010](#) [8003AI-12-33S-40.00000Y](#) [1602BI-13-33S-19.200000E](#)