

The ECS-2100X Series clock oscillator offers low current drain and is compatible with HCMOS/TTL logic. The metal package with pin #4 case ground acts as a shielding to minimize radiation.

Request a Sample

### OPERATING CONDITIONS / ELECTRICAL CHARACTERISTICS



- HCMOS/TTL logic compatible
- Wide frequency range
- Low power consumption
- Resistance weld package
- 3.3V operation (optional)
- PbFree/RoHS Compliant

Parameters	Frequency Range	Conditions	MIN	TYP	MAX	Units
Frequency (F <sub>O</sub> )	1.000 ~ 150.000		1.000		150.000	MHz
Operating Temperature Range (T <sub>OPR</sub> )	1.000 ~ 150.000		0		+70	°C
Storage Temperature Range (T <sub>STG</sub> )	1.000 ~ 150.000		-55		+125	°C
Frequency Stability	1.000 ~ 150.000	All Conditions*	-100		+100	PPM
Input Current (I <sub>DD</sub> )	1.000 ~ 25.000			17	25	mA
	25.000 ~ 50.000			33	46	mA
	50.000 ~ 80.000			45	77	mA
	80.000 ~ 150.000			67	82	mA
Output Symmetry	1.000 ~ 80.000	50% V <sub>DD</sub> level	45	50 ± 3	55	%
	80.000 ~ 150.000	50% V <sub>DD</sub> level	40	50 ± 3	60	%
Rise Time (T <sub>R</sub> )	1.000 ~ 150.000	10% ~ 90% V <sub>DD</sub> level			5	nS
Fall Time (T <sub>F</sub> )	1.000 ~ 150.000	90% ~ 10% V <sub>DD</sub> level			5	nS
Output Voltage (V <sub>OL</sub> ) (V <sub>OH</sub> )	1.000 ~ 150.000	I <sub>OL</sub> = 16 mA			0.5	V
	1.000 ~ 150.000	I <sub>OH</sub> = -16 mA	4.5			V
Output Current (I <sub>OL</sub> ) (I <sub>OH</sub> )	1.000 ~ 150.000	V <sub>OL</sub> = 0.5V			16	mA
	1.000 ~ 150.000	V <sub>OH</sub> = 4.5V			-16	mA
Output Load	1.000 ~ 150.000	TTL			10	TTL
	1.000 ~ 80.000	HCMOS			50	pF
	80.000 ~ 150.000	HCMOS			30	pF
Start-Up Time (T <sub>S</sub> )	1.000 ~ 150.000	0.0V to 5.0V			10	mS
Supply Voltage (V <sub>DC</sub> )			+4.75	+5.0	+5.25	V <sub>DC</sub>

\* Inclusive of 25°C tolerance, operating temperature range, input voltage change, load change, aging, shock and vibration.

### Part Numbering Guide: Example ECS-2100AX-100

ECS - Series - Stability - Frequency Abbreviations

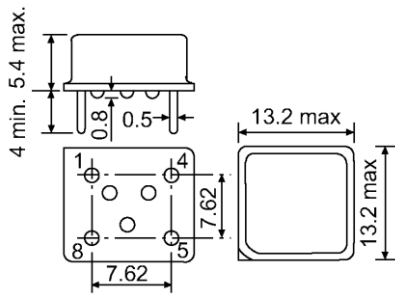
ECS

2100  
+5V HCMOS/TTL  
Half Size

AX = ±100 PPM  
BX = ±50 PPM  
CX = ±25 PPM

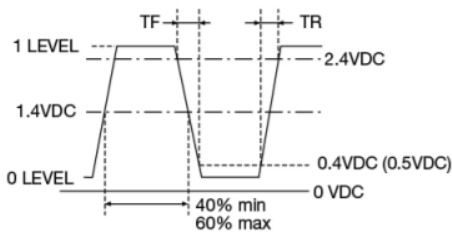
100 = 10.000 MHz

**Package Dimensions (mm)**

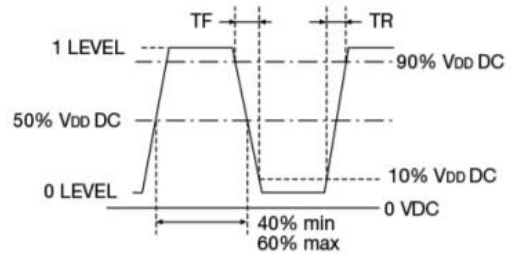


**Figure 1)** Side, Bottom, and Top views

Pin Connections	
#1	NC
#4	GROUND
#5	Output
#8	+5V DC



**Figure 2)** TTL Output Wave Form



**Figure 3)** HCMOS Output Wave Form

## X-ON Electronics

Largest Supplier of Electrical and Electronic Components

*Click to view similar products for [Standard Clock Oscillators](#) category:*

*Click to view products by [ECS Inc](#) manufacturer:*

Other Similar products are found below :

[601252](#) [F335-12](#) [F335-25](#) [F535L-33.333](#) [F535L-50](#) [ASV-20.000MHZ-LR-T](#) [ECS-2018-160-BN-TR](#) [EL13C7-H2F-125.00M](#) [MXO45HS-2C-66.6666MHZ](#) [SiT8209AI-32-33E-125.000000](#) [SM4420TEV-40.0M-T1K](#) [F335-24](#) [F335-40](#) [F535L-10](#) [F535L-16](#) [F535L-24](#) [F535L-27](#) [F535L-48](#) [PE7744DW-100.0M](#) [CSX-750FCC14745600T](#) [ASF1-3.686MHZ-N-K-S](#) [XO57CTECNA3M6864](#) [ECS-2100A-147.4](#) [601251](#) [EP16E7E2H26.000MTR](#) [SIT8918AA-11-33S-16.000000G](#) [XO3003](#) [9120AC-2D2-33E212.500000](#) [9102AI-243N25E100.00000](#) [8208AC-82-18E-25.00000](#) [ASDK2-32.768KHZ-LR-T3](#) [8008AI-72-XXE-24.545454E](#) [8004AC-13-33E-133.33000X](#) [AS-4.9152-16-SMD-TR](#) [ASFL1-48.000MHZ-LC-T](#) [SIT8920AM-31-33E-25.0000](#) [DSC1028DI2-019.2000](#) [9121AC-2C3-25E100.00000](#) [9102AI-233N33E100.00000X](#) [9102AI-233N25E200.00000](#) [9102AI-232H25S125.00000](#) [9102AI-133N25E200.00000](#) [9102AC-283N25E200.00000](#) [9001AC-33-33E1-30.0003921AI-2CF-33NZ125.000000](#) [5730-1SF](#) [PXA000010](#) [SIT1602BC-83-33E-10.000000Y](#) [8003AI-12-33S-40.00000Y](#) [1602BI-13-33S-19.200000E](#)