

ECS tuning fork type crystals are used as a clock source in communication equipment, measuring instruments, microprocessors and other time management applications. Their low power consumption makes these crystals ideal for portable equipment.

Request a Sample

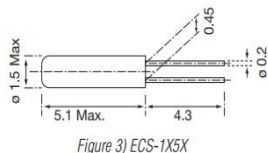
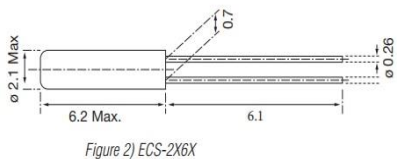
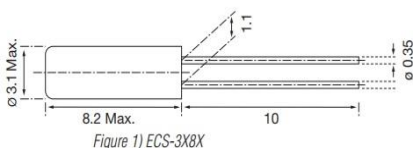


- Cost Effective
- Tight Tolerance
- Long Term Stability
- Excellent Resistance and Environmental Characteristics
- Pb Free/RoHS Compliant

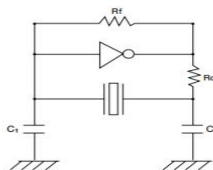
OPERATING CONDITIONS / ELECTRICAL CHARACTERISTICS

PARAMETERS		3X8X	2X6X	1X5X	UNITS
Frequency	F ₀	32.768	32.768	32.768	KHz
Frequency Tolerance	Δf/f ₀	±20	±20	± 20	ppm
Load Capacitance	C _L	12.5	12.5	8.0	pF
Drive Level (max)	D _L	1	1	1	μW
Resistance At Series Resonance	R ₁	35(max)	35(max)	40(max)	KΩ
Q-Factor	Q	90,000(typ.)	70,000(typ.)	80,000(typ.)	
Turnover Temperature	T _M	+25 ±5	+25 ±5	+25 ±5	°C
Temperature Coefficient	β	-0.040ppm/°C ² max.	-0.040ppm/°C ² max.	-0.040ppm/°C ² max.	PPM/ΔC°
Shunt Capacitance	C ₀	1.60 (typ.)	1.35 (typ.)	1.00 (typ.)	pF
Capacitance Ratio		460 (typ.)	450 (typ.)	400 (typ.)	
Operating Temp	T _{opr}	-10 ~ +60			°C
Storage Temperature	T _{stg}	-40 ~ +85			°C
Shock Resistance		Drop 3 times on hard wooden board from height of 75cm / ±5 ppm max.			PPM
Insulation Resistance	IR	500 MΩ min./DC100V			MΩ
Aging (First Year)	Δf/f ₀	±3 ppm max. @ +25°C ±3°C			ppm
Motional Capacitance	C ₁	0.0035(typ.)	0.0030(typ.)	0.0025(typ.)	pF

DIMENSIONS (mm)



RECOMMENDED OSCILLATION CIRCUIT

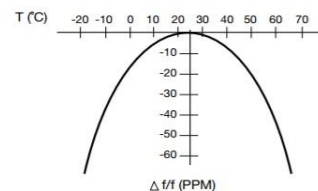


ELECTRICAL CHARACTERISTICS

IC: TC 4069P
 R_f: 10MΩ
 R_d: 330KΩ (As required)
 C₁ = 22pF, C₂ = 22pF
 V_{DD} = 3.0V

In this circuit, low drive level with a maximum of 1μW is recommended. If excessive drive is applied, irregular oscillation or quartz element fractures may occur.

PARABOLIC TEMPERATURE CURVE



To determine frequency stability, use parabolic curvature. For example: What is the stability at 45°C?

- 1) Change in T (°C) = 45 - 25 = 20°C
- 2) Change in frequency = -0.04 PPM × (ΔT)² = -0.04 PPM × (20)² = -16.0 PPM

PART NUMBERING GUIDE:

Manufacturer	Frequency	Load Capacitance	Package Type*
ECS	.327	12.5	8X
ECS	.327	12.5	13X
ECS	.327	12.5	14X

* Package type examples (8X = 3x8, 13X = 2x6, 14X = 1x5)

SOLDER PROFILE
Peak solder Temp +260°C Max 10 sec Max.
2 Cycles Max.
MSL 1, Lead Finish Sn/Cu Matte

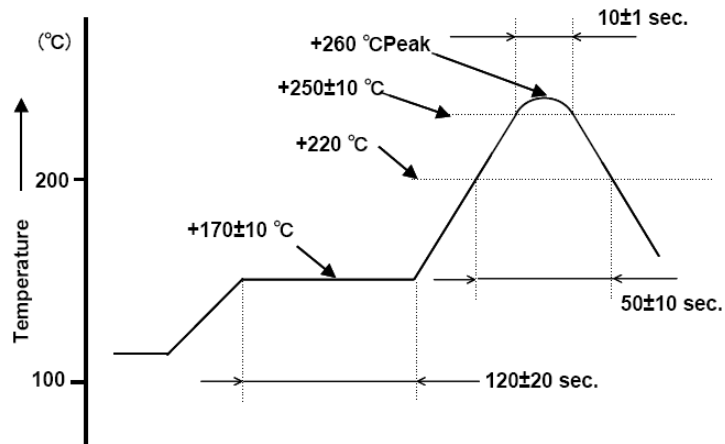


Figure 1) Suggested Solder Profile

X-ON Electronics

Largest Supplier of Electrical and Electronic Components

Click to view similar products for [Crystals category](#):

Click to view products by [ECS Inc manufacturer](#):

Other Similar products are found below :

[MC405 32.0000K-R3:PURE SN](#) [7B-27.000MBBK-T](#) [MP1-8.0 99-BU](#) [9B-15.360MBBK-B](#) [PTX-A2JM-10.000M](#) [9C-7.680MBBK-T](#) [H10S-12.000-18-EXT-TR](#) [ABLS-18.432MHZ-20-D-4-T](#) [R38-32.768-12.5-5PPM-NPB](#) [BTD1062E05A-513](#) [21U15A-21.4MHZ](#) [RTX-781DF1-S-20.950](#) [LFXTAL066198Cutt](#) [9C-14.31818MBBK-T](#) [A-11.000MHZ-27](#) [SPT2A-.032768B](#) [SPT2A.032768G](#) [SSPT7F-9PF20-R](#) [FX325BS-38.88EEM1201](#) [MP-1-25.000MHZ-3L](#) [MP-1-6.000MHZ](#) [LFXTAL065253Cutt](#) [LFXTAL066431Cutt](#) [XT9S20ANA14M7456](#) [XT9SNLANA16M](#) [646G-24-2](#) [7B-30.000MBBK-T](#) [9B-14.31818MBBK-B](#) [6504-202-1501](#) [6526-202-1501](#) [FA-118T 27.1200MB50P-K0](#) [BTJ120E02C](#) [SG636PCE-20.000MC](#) [3404](#) [CX3225SB48000Z0DZNC1](#) [C1E-24.000-7-2020-R](#) [C1E-19.200-12-1530-X-R](#) [C1E-16.000-12-1530-X-R](#) [FL5000014](#) [EUCA18-3.1872M](#) [425F35E027M0000](#) [FP0800018](#) [17196](#) [MS3V-T1R-32.768kHz-7pF-20PPM-TA-QC-Au](#) [VXM7-1C1-16M000](#) [MS1V-T1K-32.768kHz-10pF-20PPM-TA-QC-Au](#) [MS3V-T1R-32.768kHz-9pF-20PPM-TA-QC-Au](#) [CX2016DB48000C0FPLC1](#) [ECS-80-18-30-JGN-TR](#)