

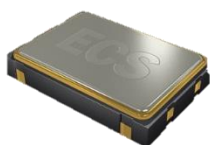
The ECS-3951C (5V) and ECS-3953C (3.3V) miniature SMD crystal controlled, low current clock oscillator in an all ceramic SMD package.

Request a Sample

Obsolete/End of Life Date 01/08/2021

OPERATING CONDITIONS / ELECTRICAL CHARACTERISTICS

ECS-3951C/3953C



- 3.3 or 5.0V version
- 5 x 7 mm Footprint
- Low Power Consumption
- RoHS Compliant (Note 7 Exemption)

Parameters	Conditions	ECS-3951C (+5V)			ECS-3953C (+3.3V)			Units
		MIN	TYP	MAX	MIN	TYP	MAX	
Frequency Range		1.000		80.000	1.000		125.000	MHz
Operating Temperature	Standard	0		+70	0		+70	°C
	Extended (N Option)	-40		+85	-40		+85	°C
Storage Temperature		-55		+125	-55		+125	°C
Supply Voltage		+4.5	+5.0	+5.5	+3.0	+3.3	+3.6	VDC
Frequency Stability*	Standard			±100			±100	PPM
	Option B			±50			±50	PPM
	Option C			±25			±25	PPM
Input Current	1.8 ~ 30.0 MHz			10			8	mA
	30.1 ~ 35.0 MHz			15			8	mA
	35.1 ~ 50.0 MHz			30			12	mA
	50.1 ~ 66.0 MHz			30			15	mA
	66.1 ~ 80.0 MHz			50			30	%
Output Symmetry	@50% VDD Level			40/60			40/60	%
Rise and Fall Times	10% VDD to 90% Level			10			15	ns
"0" Level	VOL			10%* VCC			10%* VCC	VDC
"1" Level	VOH	90%* VCC			90%* VCC			VDC
Output Load	HCMOS			15			15	pF
Startup Time	1.8 ~ 36.0 MHz			5			5	ms
	36.1 ~ 80.0 MHz			10			10	ms
Output Current	VOL=0.5V/0.33V			4			4	mA
	VOL=4.5V/2.97V			-4			-4	mA
Enable/Disable Time				100			150	ns

* Note: Inclusive of 25°C tolerance, operating temperature, input voltage change, load change, shock and vibration.

Part Numbering Guide: Example ECS-3951C-500-B-TR

ECS - Series - Frequency Abbreviations - Stability Tolerance - Temperature - Packaging

ECS	3951C +5V 3953C +3.3V	500 = 50 MHz	Blank = ±100 ppm B = ±50 ppm C = ±25 ppm	Blank = 0 ~ 70°C M = -20 ~ +70°C N = -40 ~ +85°C	TR = Tape & Reel 1K/Reel
-----	--------------------------	--------------	------------------------------------------------	--------------------------------------------------------	-----------------------------

Package Dimensions (mm)

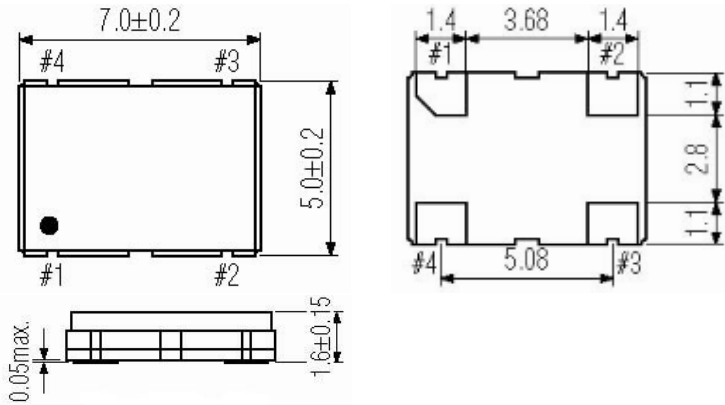


Figure 1) Top, Side, and Bottom views

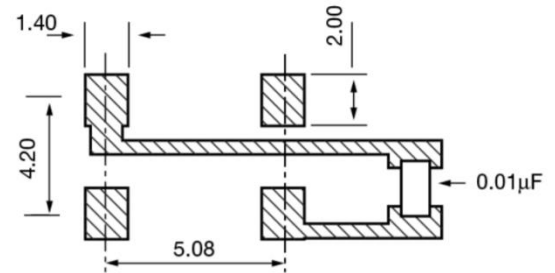


Figure 2) Land Pattern

Pin Connections	
#1	Tri-State**
#2	Ground
#3	Output
#4	VCC

Tri-State Control Voltage	
Pad 1	Pad 3
Open	Oscillation
VCC x 0.9 Min.	Oscillation
VCC x 0.1 Max.	No Oscillation

** Note: Internal pullup resistor from pin 1 to 4 allows active output if pin 1 is left open

ECS-3953C is also compatible with a supply voltage of +3.0V DC ±0.3V

X-ON Electronics

Largest Supplier of Electrical and Electronic Components

Click to view similar products for [Standard Clock Oscillators](#) category:

Click to view products by [ECS Inc](#) manufacturer:

Other Similar products are found below :

[601252](#) [F335-12](#) [F335-25](#) [F535L-33.333](#) [F535L-50](#) [ASV-20.000MHZ-LR-T](#) [ECS-2018-160-BN-TR](#) [EL13C7-H2F-125.00M](#) [MXO45HS-2C-66.6666MHZ](#) [SiT8209AI-32-33E-125.000000](#) [SM4420TEV-40.0M-T1K](#) [F335-24](#) [F335-40](#) [F535L-10](#) [F535L-16](#) [F535L-24](#) [F535L-27](#) [F535L-48](#) [PE7744DW-100.0M](#) [CSX-750FCC14745600T](#) [ASF1-3.686MHZ-N-K-S](#) [XO57CTECNA3M6864](#) [ECS-2100A-147.4](#) [601251](#) [EP16E7E2H26.000MTR](#) [SIT8918AA-11-33S-16.000000G](#) [XO3003](#) [9120AC-2D2-33E212.500000](#) [9102AI-243N25E100.00000](#) [8208AC-82-18E-25.00000](#) [ASDK2-32.768KHZ-LR-T3](#) [8008AI-72-XXE-24.545454E](#) [8004AC-13-33E-133.33000X](#) [AS-4.9152-16-SMD-TR](#) [ASFL1-48.000MHZ-LC-T](#) [SIT8920AM-31-33E-25.0000](#) [DSC1028DI2-019.2000](#) [9121AC-2C3-25E100.00000](#) [9102AI-233N33E100.00000X](#) [9102AI-233N25E200.00000](#) [9102AI-232H25S125.00000](#) [9102AI-133N25E200.00000](#) [9102AC-283N25E200.00000](#) [9001AC-33-33E1-30.0003921AI-2CF-33NZ125.000000](#) [5730-1SF](#) [PXA000010](#) [SIT1602BC-83-33E-10.000000Y](#) [8003AI-12-33S-40.00000Y](#) [1602BI-13-33S-19.200000E](#)