

The ZTB 455E ceramic resonator offers low frequency 455 KHz and extended temp range.

ZTB455E
455 KHz
Ceramic resonator



- Low Frequency Resonator
- RoHS Compliant (Note 7 exemption)
- Extended temp range

OPERATING CONDITIONS / ELECTRICAL CHARACTERISTICS

PARAMETERS	CONDITIONS	ZTB455E			UNITS
		MIN	TYP	MAX	
Frequency			455.0		KHz
Frequency Tolerance	@ +25°C			± 2	KHz
Frequency Stability	-20 ~ +80°C			±0.3	%
Aging	10 Years			±0.5	%
ESR				20	Ohms
C1			100		pF
C2			100		pF
Operating Temperature	T _{opr}	-20		+80	°C
Storage Temperature	T _{stg}	-20		+85	°C

Not for new designs

DIMENSIONS (mm)

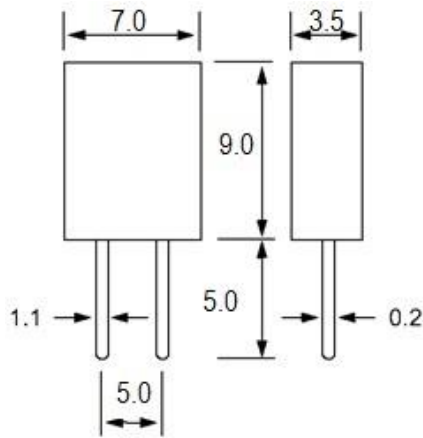


Figure 1) Top, and Side Views

ZTB PCN

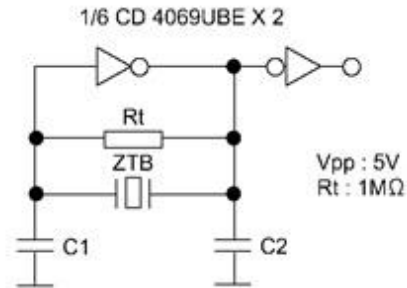


Figure 2) Test Circuit

PART NUMBER: ZTB455E



ZTB455E
455 KHz
Ceramic Resonator



SOLDER PROFILE
Peak solder Temp +230°C Max 5 sec Max.
Not compatible with reflow solder
MSL 1

X-ON Electronics

Largest Supplier of Electrical and Electronic Components

Click to view similar products for [Resonators](#) category:

Click to view products by [ECS Inc](#) manufacturer:

Other Similar products are found below :

[B39431R820H210](#) [CSAC2.00MGCM-TC](#) [ECS-HFR-40.00-B-TR](#) [CSTLS4M00G53Z-A0](#) [ECS-CR2-16.00-A-TR](#) [ECS-HFR-20.00-B-TR](#)
[ECS-CR2-20.00-A-TR](#) [RO3164E-3](#) [7D038400I01](#) [7B009843R01](#) [NX2012SA](#) [32.768KHZ STD-MUB-1](#) [NX3215SA](#) [32.768KHZ STD-MUS-2](#)
[OZ26030001](#) [Q22FA12800519](#) [CSTCR4M00G55E-R0](#) [XC32M4-37.400-F16NLDT](#) [CSTLS24M0X53-B0](#) [AWSCR-10.00CELB-C10-T3](#)
[AWSCR-12.00CELA-C33-T3](#) [AWSCR-2.00CPLB-C15-T4](#) [AWSCR-3.58CPLA-C30-T4](#) [AWSCR-3.58CPLB-C30-T4](#) [AWSCR-4.00CPLA-](#)
[C33-T4](#) [AWSCR-4.00CPLB-C10-T4](#) [AWSCR-4.00CRLA-C39-T3](#) [AWSCR-4.19CPLA-C30-T4](#) [AWSCR-4.19CRLA-C15-T3](#) [AWSCR-](#)
[4.19CRLB-C15-T3](#) [AWSCR-4.91CRLB-C15-T3](#) [AWSCR-5.00CPLA-C30-T4](#) [AWSCR-5.00CPLB-C30-T4](#) [AWSCR-5.00CRLA-C15-T3](#)
[AWSCR-5.00CRLA-C39-T3](#) [AWSCR-5.00CRLB-C15-T3](#) [AWSCR-7.37CPLA-C30-T4](#) [AWSCR-7.37CPLB-C30-T4](#) [9AC04194152080D2JB](#)
[CSTCR4M91G55B-R0](#) [CSTLS3M68G56-B0](#) [FC-12M32.768KHZ9PF20PPM](#) [ASR433.42E-T](#) [ZTTCC8.00MG](#) [ZTTCS8.00MT](#)
[X1A000091000500](#) [X1A0000910001](#) [ECS-SR1-4.19-B-TR](#) [7C024000HW1](#) [7C012000IW1](#) [7C012000MW1](#) [7C016000HW1](#)