

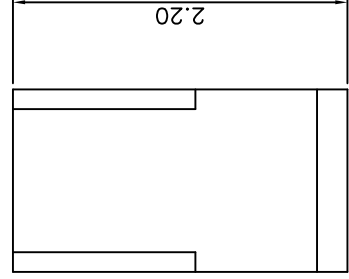
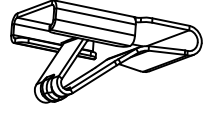
GENERAL TOLERANCE	XX. ±0.50	X. ±0.35	.X ±0.25	.XX ±0.15
	X. ±2.0	.X. ±1.0		
				SIZE: A4

SCALE: 1:1	UNIT: mm
APPROVE	DATE
CHECK	DATE
DATE	DATE

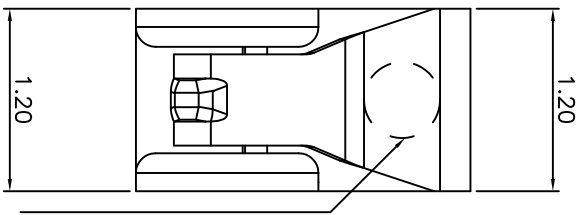
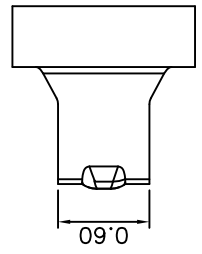
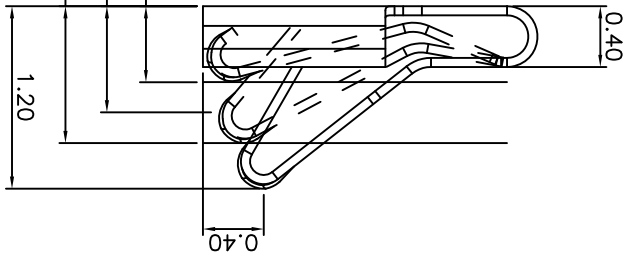
DWG. NO. 600-4111-01	PARTS NO.(INTENDED USE) 818004111
DATE 01/08/15	DATE
DATE	DATE

REV. A	TITLE (CUSTOMER DRAWING)
SHEET 1/1	Antenna RF Spring, SMT, Au Plating, L2.2*W1.2*H1.2

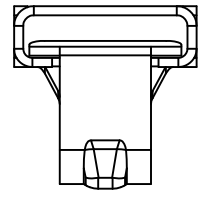
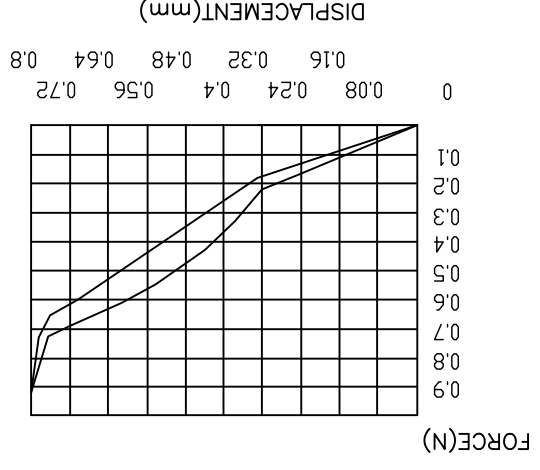
3D VIEW



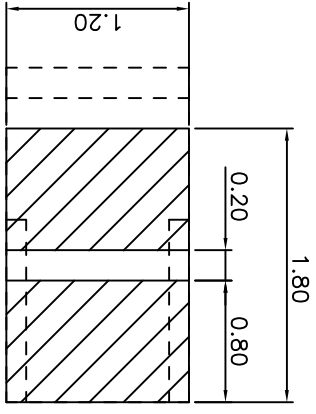
0.50MAX WORKING POSITION
0.70WORKING POSITION
0.90MIN WORKING POSITION



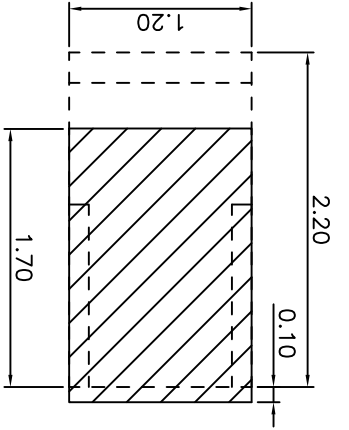
Ø.50 PICK& PLACE AREA



RECOMMENDED METAL MASK
TOLERANCE ±0.05MM



RECOMMENDED PCB LAYOUT
TOLERANCE ±0.05MM



- NOTES:
- 1-1: STAINLESS STEEL, T=0.06mm.
 - 2-1: 3u" MIN Au PLATING ON CONTACT AREA, GOLD FLASH PLATING ON SOLDER AREA.
 - 50-150u" NICKEL UNDERPLATING OVER ALL.
 - 3-SPECIFICATIONS:
 - 3-1-CONTACT RESISTANCE:50mΩ MAX.
 - 3-2-OPERATING TEMPERATURE: -20°C~+65°C.
 - 3-3-PRE-LOAD FORCE:0.30N ON CONTACT POINT.
 - 3-4-FORCE MAX. DEFLECTION:0.9N ON CONTACT POINT.
 - 3-5-MAX.BEAM DEFLECTION:0.7mm. ON CONTACT POINT.
 - 4-RF PERFORMANCE:
 - 4-1-IMPEDANCE:50OHM.
 - 4-2-VSWR: 1.5MAX.(DC~3GHZ)
 - 4-3-INSERTION LOSS: 0.6dBMAX.(DC~3GHZ)
 - 5-DURABILITY: 100 CYCLES.
 - 6-PACKING SPECIFICATION:REEL&TAPE.

Rev.	ECN Number	Description	Date	Drawn	Checked	Approved
A	ECN151936	NEW RELEASE	01/08/15	STAR HU		

X-ON Electronics

Largest Supplier of Electrical and Electronic Components

Click to view similar products for [Terminals](#) category:

Click to view products by [ECT](#) manufacturer:

Other Similar products are found below :

[HT-13-10](#) [71M-250-32-NB](#) [01-2065-1-0216](#) [00581P0075](#) [M10-10RX](#) [M10BCK](#) [60205-1](#) [604200-1](#) [60598-1-CUT-TAPE](#) [60617-1-C](#) [60873-1](#) [M14-516R/SK](#) [M14-6RSX](#) [M18-10FLX](#) [M18-8FBX](#) [M18-8R/LX](#) [M18BCK](#) [61314-6-C](#) [61-S](#) [61-SN-A](#) [62-NBM-A](#) [63-S](#) [640179-1](#) [640917-2-CUT-TAPE](#) [6501550002](#) [66107-2-C](#) [66107-4-C](#) [696683-1](#) [696834-1](#) [696861-1](#) [696931-1](#) [696999-1](#) [M8-516RK](#) [M86700006](#) [MA250DMFMX-A](#) [701-2007](#) [701-2307](#) [701-7761-03](#) [70F-110-32-PB](#) [718-N-A](#) [71M-187-20-NBL](#) [71M-250-32-NBL](#) [72F-187-20-NBL](#) [72M-250-32-NBL](#) [7310](#) [73F-250-32](#) [73F-250-32-NBL](#) [73F-250-32-NL](#) [F14-10C](#) [F-1M](#)