

GENERAL TOLERANCE

XX ± 0.40

X ± 0.25

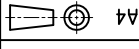
X ± 0.20

X ± 0.13

SCALE: 1:1

UNIT: mm

SIZE: A4



APPROVE:

CHECK:

DRAWN: hunter

DATE:

DATE:

DATE: 02/27/18

DWG. NO: 600-4989-01

PARTS NOT INTENDED USE: 818004989

CUSTOMER DRAWING
SHIELD CAN CLIP
L6.50*W0.90*H0.80mm

SHEET: 1/1

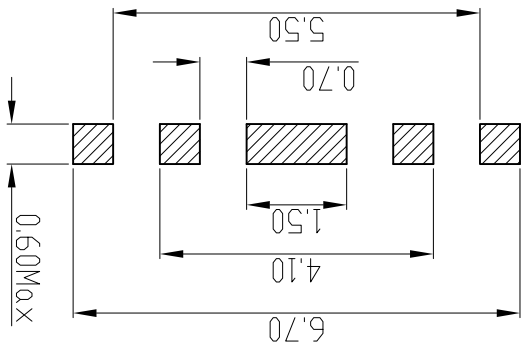
REV. B

3-1-RATING CURRENT: 2A,
3-2-RATING VOLTAGE: 10V
3-3-CONTACT RESISTANCE: 50Ω MAX.
3-4-OPERATING TEMPERATURE: -40°C~+85°C
4-PACKING SPECIFICATION: REEL & TAPE
5-COMPLIANT TO ROHS & LEAD FREE

3-SPECIFICATIONS:
STRUCTURE WITHOUT DIMENSIONS PLEASE REFER TO 3D DRAWING.
2-2: DIMENSIONS WITHOUT TOLERANCE PLEASE REFER TO TOLERANCE TABLE,
30~150μ NICKEL UNDERPLATING OVER ALL,
2-1: 50-120μ MATTE-SN PLATING OVER NICKEL,

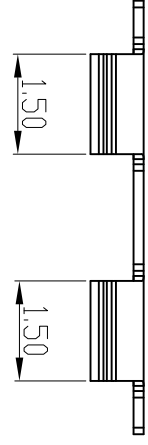
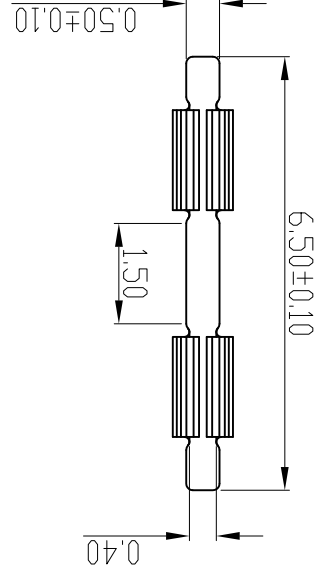
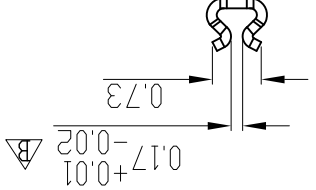
2-FINISH:
1-1: SUS301 R-H, T=0.15mm,
1-MATERIAL:

NOTES:
RECOMMENDED PCB LAYOUT
TOLERANCE ±0.05MM
(FOR REFERENCE ONLY)



0.06

0.80^{+0.10}
-0.00



REV.	ECN NUMBER	DESCRIPTION	DATE	DRAWN	CHECKED	APPROVED
B	ECN180313	尺寸公差調整	02/27/18	Hunter	PM	TAN
A	ECN161546	A版发行	08/18/16	Hunter	PM	TAN

X-ON Electronics

Largest Supplier of Electrical and Electronic Components

Click to view similar products for [Circuit Board Hardware - PCB category](#):

Click to view products by [ECT manufacturer](#):

Other Similar products are found below :

[8919-0-00-15-00-00-03-0](#) [0132-0-15-01-30-27-04-0](#) [0135-0-15-01-30-27-04-0](#) [5970-1-15-01-32-14-04-0](#) [0132-0-15-15-30-27-04-0](#) [0135-0-15-15-30-27-04-0](#) [0149-0-15-15-30-27-04-0](#) [MBI 1 BLUE](#) [7305-0-15-15-47-14-10-0](#) [MKU 1 BLACK](#) [MLN 150/1 BLACK](#) [8579-0-15-80-11-27-10-0](#) [8579-1-15-15-11-27-10-0](#) [8637-0-15-15-21-14-10-0](#) [8830-0-15-01-22-14-10-0](#) [8836-0-00-21-00-00-03-0](#) [PRUEF 2 RED](#) [9976-0-00-00-00-00-03-0](#) [1178-0-01-80-00-00-03-0](#) [PW1616](#) [1215-3-05-00-00-00-01-0](#) [1303-0-15-15-47-14-04-0](#) [1404-3](#) [1404-4](#) [1406-4](#) [1407-3](#) [1406-3](#) [1407-4](#) [1408-3](#) [1424-4](#) [1426-3](#) [1427-3](#) [1427-4](#) [1428-3](#) [1419-4](#) [1424-3](#) [1426-4](#) [1428-4](#) [MPS 1 BLACK](#) [1520150-1](#) [1548-103](#) [1801-0-15-15-30-27-04-0](#) [1938-0-00-00-00-00-03-0](#) [1942-0-00-00-00-00-03-0](#) [2101-3-00-44-00-00-07-0](#) [2104-2-01-44-00-00-07-0](#) [2108-2-00-50-00-00-07-0](#) [2108-3-00-44-00-00-07-0](#) [2109-2-00-44-00-00-07-0](#) [2110-2-00-44-00-00-07-0](#)