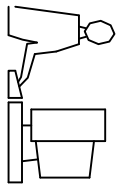
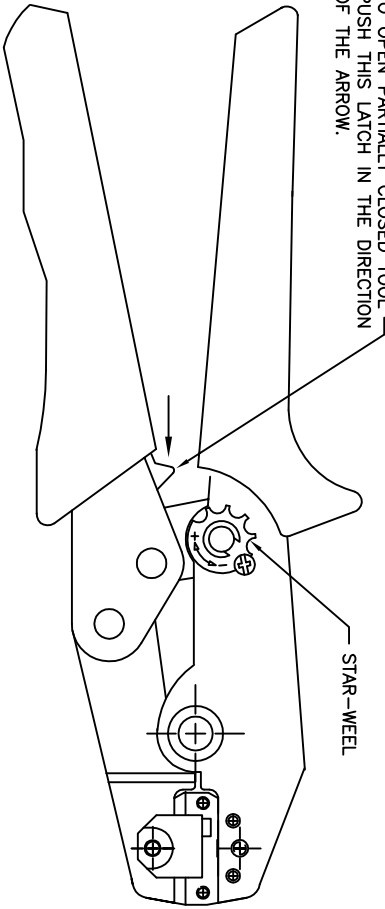


THIS IS A C.A.D. GENERATED DRAWING  
DO NOT MAKE MANUAL REVISIONS TO MASTER.

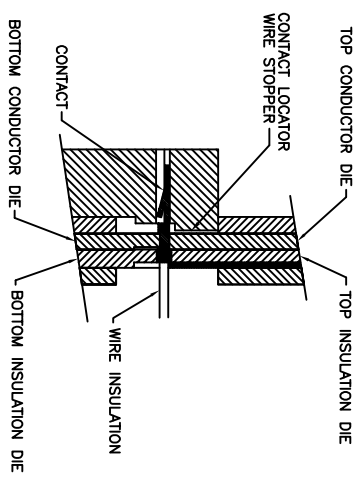


ISSUE NUMBER  
ORIGINAL  
①

TO OPEN PARTIALLY CLOSED TOOL -  
PUSH THIS LATCH IN THE DIRECTION  
OF THE ARROW.



STAR-WHEEL

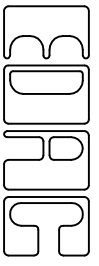


SECTION THROUGH DIE NEST  
WITH CONTACT IN POSITION

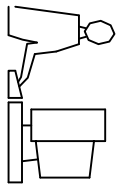
NOTES:

- | WIRE AWG | CRIMP STRENGTH |
|----------|----------------|
| 24 AWG   | 5 LBS          |
| 26 AWG   | 3 LBS          |
| 28 AWG   | 2 LBS          |
- 1- THIS HAND TOOL IS DESIGNED FOR CRIMPING 24 TO 28 AWG WIRES TO EDAC CONTACT P/N 140-941-290.
  - 2- RISK OF ELECTRIC SHOCK- DO NOT USE THIS ON LIVE WIRE.
  - 3- CRIMPING INSTRUCTIONS:
    - OPEN THE TOOL, PLACE THE CONTACT INTO THE CORRECT DIE NEST.
    - PARTIALLY CLOSE THE TOOL UNTIL THE CONTACT IS HELD IN PLACE. INSERT THE WIRE INTO THE CONTACT.
    - CLOSE THE TOOL UNTIL THE RATCHET RELEASES. REMOVE THE CRIMPED CONTACT.
  - 4- ADJUSTMENT OF CRIMP FORCE (WHEN NECESSARY):
    - LOOSEN THE SCREW
    - ADJUST THE STAR-WHEEL BY TURNING FROM (-) TO(+).
    - CHECK THE PRELOAD AND THE CRIMP FORCE.
- TOOL PART NUMBER: 140-280-201

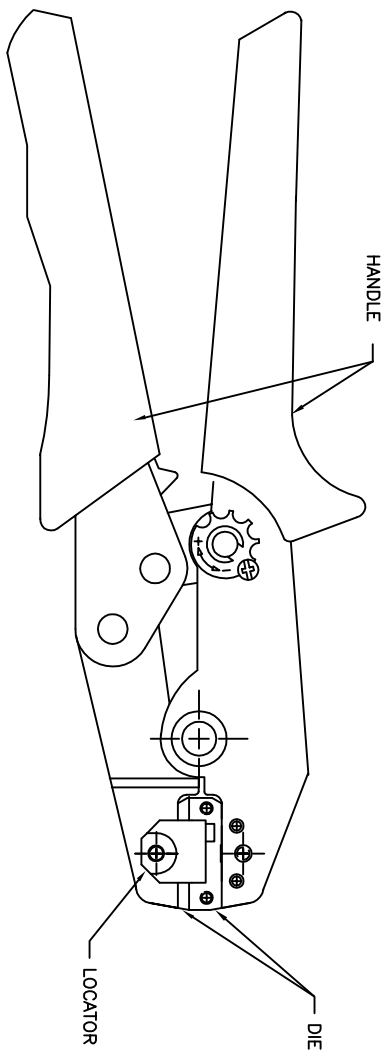
140 SERIES HAND CRIMP TOOL INSTRUCTIONS

 <p>EDAC INC TORONTO, ONTARIO CANADA</p> <p>YOUR CONNECTION TO QUALITY &amp; SERVICE</p>		ACAD REFERENCE NO. 140-280-201	
		<p>THESE DRAWINGS AND SPECIFICATIONS ARE THE PROPERTY OF EDAC INC. AND SHALL NOT BE REPRODUCED, OR COPIED OR USED AS THE BASIS FOR THE MANUFACTURE OR SALE OF APPARATUS WITHOUT WRITTEN PERMISSION.</p>	<p>DRAWN: K.L.</p> <p>CHECKED:</p> <p>SCALE: N.T.S.</p> <p>DRAWING NUMBER 140-280-201</p>

THIS IS A C.A.D. GENERATED DRAWING  
DO NOT MAKE MANUAL REVISIONS TO MASTER.

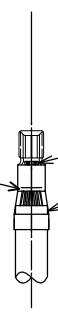


ISSUE NUMBER  
ORIGINAL  
①



KEEP THE WIRE TO APPEAR

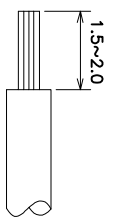
KEEP THE INSULATION TO APPEAR  
BE SURE NOT TO ENCRACH ON THE WIRE BARREL



BELL MOUTH MUST EXIST

SEAM MUST BE CLOSED  
WIRE MUST NOT BE EXPOSED

ROLLING ± 3°



WIRE STRIP LENGTH

CRIMP ASM*	LOCATOR
140-280-201	140-281-003

\* Assembly includes: Handle, Die and Locator. Locator is available for purchase separately.

# 140 SERIES HAND CRIMP TOOL INSTRUCTIONS

**EDAC INC**  
TORONTO, ONTARIO  
CANADA

YOUR CONNECTION TO QUALITY & SERVICE

THESE DRAWINGS AND SPECIFICATIONS  
ARE THE PROPERTY OF EDAC INC. AND  
SHALL NOT BE REPRODUCED, OR COPIED  
OR USED AS THE BASIS FOR THE  
MANUFACTURE OR SALE OF APPARATUS  
WITHOUT WRITTEN PERMISSION.

ACAD REFERENCE NO. 140-280-201

DRAWN: K.L. DATE: OCT.22/2020

CHECKED: DATE:

SCALE: N.T.S. SHEET 2 OF 2

DRAWING NUMBER 140-280-201 ISSUE 1

## X-ON Electronics

Largest Supplier of Electrical and Electronic Components

*Click to view similar products for [Crimpers / Crimping Tools](#) category:*

*Click to view products by [EDAC](#) manufacturer:*

Other Similar products are found below :

[010-0096](#) [CT150-2-D02](#) [CT150-6-RH07](#) [622-6441LF](#) [63484-3701](#) [63800-8355](#) [63819-1875](#) [63819-2875](#) [63819-4475](#) [63827-5375](#) [64005-0175](#) [662903-2](#) [690602-6](#) [7-23471-1](#) [734611-1](#) [762637-1](#) [811242-5](#) [91362-1](#) [1-21002-3](#) [1-21002-7](#) [12118040](#) [12085270](#) [12387119-6](#) [1-22548-4](#) [125442-1](#) [DCE.91.073.BVC](#) [DCE.91.090.3MVM](#) [DCE.91.162.BVCM](#) [DCE.91.202.BVCM](#) [1310G2](#) [1333249-1](#) [1-354003-0](#) [1338301-1](#) [DF62/RE-MD](#) [142321](#) [AP105-DF11-2428S\(64\)](#) [1456088-1](#) [1-45804-6](#) [15397700](#) [AX100749](#) [1-59619-7](#) [1596970-1](#) [1-59619-8](#) [1901238-2](#) [2119581-1](#) [K761](#) [KTH-1079](#) [KTH-2022](#) [KTH-2260](#) [904139-1](#)