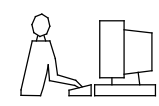
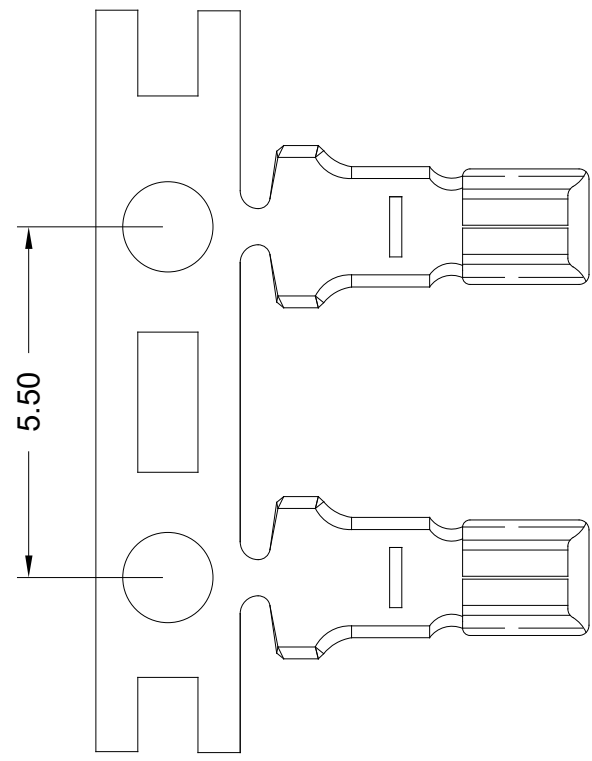


THIS IS A C.A.D. GENERATED DRAWING
DO NOT MAKE MANUAL REVISIONS TO MASTER.

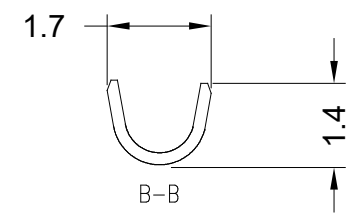
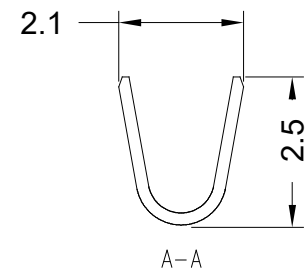
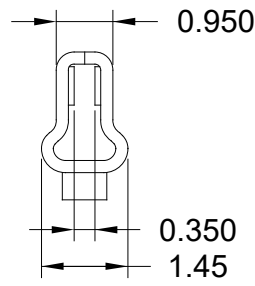
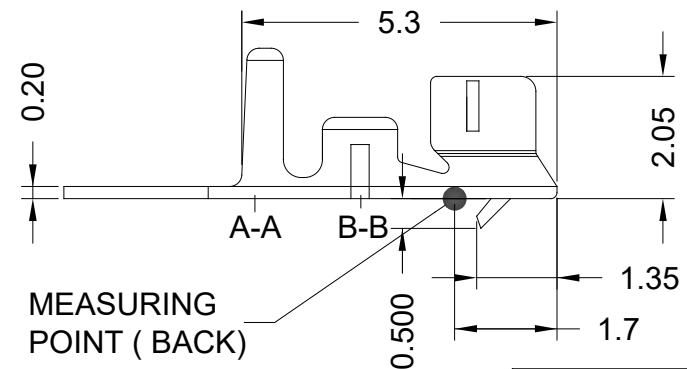
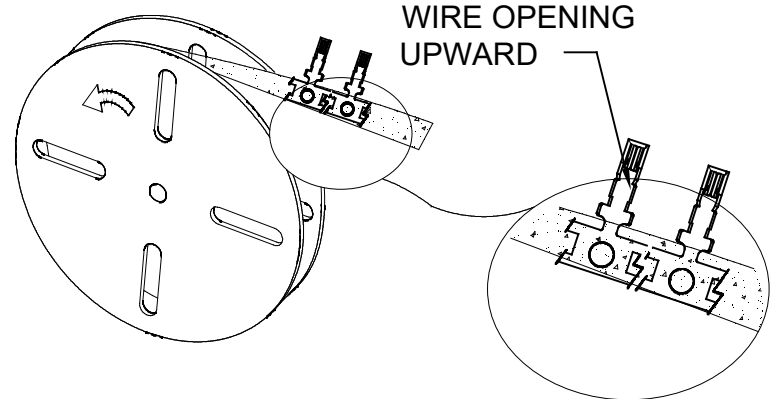


TOLERANCE UNLESS OTHERWISE SPECIFIED	
.X	±0.3
.XX	±0.20
.XXX	±0.100



NOTE:
 NO COPPER WIRE OR DEFORMATION AFTER STAMPING
 MATERIAL: PHOSPHOR BRONZE C5191, HARDNESS 190-210HV
 WIRE SIZE: AWG 22-30, OD: 1.50 MAX
 PLATING: TIN FLASH OVER NICKEL (NICKEL 30U" MIN, TIN FLASH 80U" MIN)
 PACKAGING: 10K PCS/REEL, 100K PCS/BOX. BOX SIZE:46X46X26 CM

WIRE RANGE	INSULATION O.D.	MATERIAL	FINISH	QTY/REEL
AWG#24-30	1.50mm (max)	PHOSPHOR BRONZE		10,000pcs



2.0mm CRIMP STYLE CONNECTOR		ACAD REFERENCE NO.: 140-941-290	
		DRAWN: P.M.	DATE: OCT. 27/2020
EDAC INC TORONTO, ONTARIO CANADA YOUR CONNECTION TO QUALITY & SERVICE		CHECKED: C.B.	
		DATE: OCT. 27/2020	
THESE DRAWINGS AND SPECIFICATIONS ARE THE PROPERTY OF EDAC INC., AND SHALL NOT BE REPRODUCED, OR COPIED OR USED AS THE BASIS FOR THE MANUFACTURE OR SALE OF APPARATUS WITHOUT WRITTEN PERMISSION.		SCALE: N.T.S.	SHEET 1 OF 1
		DRAWING NUMBER: 140-941-290	ISSUE 1
		PART NUMBER: 140-941-290	



THIS SERIES FULLY CONFORMS TO THE EUROPEAN UNION DIRECTIVES 2011/65/EU FOR RoHS COMPLIANCY.

X-ON Electronics

Largest Supplier of Electrical and Electronic Components

Click to view similar products for [Headers & Wire Housings](#) category:

Click to view products by [EDAC](#) manufacturer:

Other Similar products are found below :

[892-18-020-10-001101](#) [58102-G61-06LF](#) [582553-1](#) [0009485154](#) [009176003701906](#) [0050291907](#) [LY20-4P-DT1-P1E-BR](#) [02.125.8002.8](#)
[609-3404](#) [61062-3](#) [622-0430](#) [622-3653LF](#) [63453-116](#) [636-1030](#) [636-1427](#) [636-3427](#) [636-4007](#) [641938-9](#) [641991-4](#) [644827-2](#) [65817-010LF](#)
[65817-015LF](#) [65863-015LF](#) [66207-023LF](#) [67095-007LF](#) [67601157](#) [68648-049](#) [70.362.1628.0](#) [70-4210](#) [70-4226B](#) [70-4853B](#) [707-5020](#) [707-5028](#) [71.350.2428.0](#) [71918-208LF](#) [71961-016LF](#) [733-134](#) [733-162](#) [754199-000](#) [760-3052](#) [787-8014-00](#) [79531-3000](#) [FCN-360C032-B](#) [FCN-367T-T012/H](#) [FCN-723D010/2](#) [80.063.4001.1](#) [800-90-001-10-001000](#) [800-90-010-10-002000](#) [801-43-002-10-013000](#) [801-43-006-10-002000](#)