

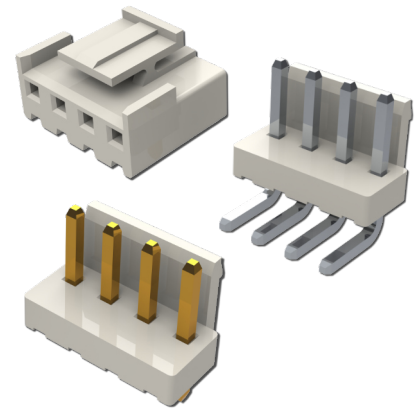
14L Series



Wire-to-Board Connectors .156" (3.96mm) Pitch

Features

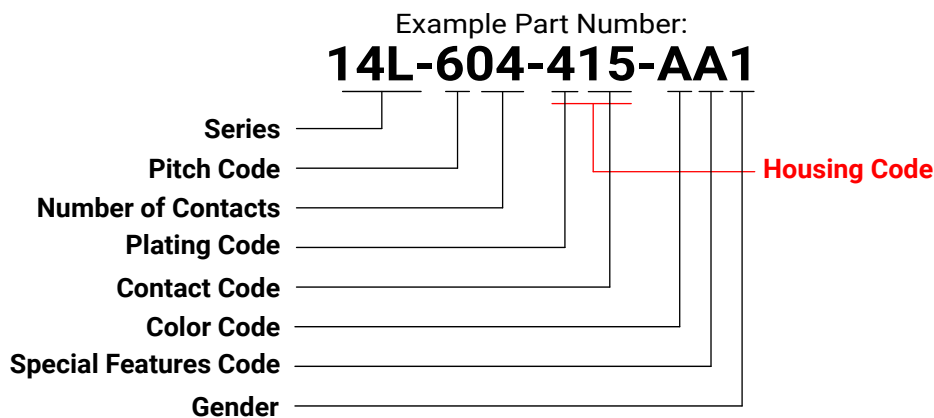
- .156" (3.96mm) contact spacing
- For use with PCB board of .062" (1.60mm) nominal thickness
- Low Profile Insulator Body, .126" (3.20mm) Width .343" (8.70mm) Height
- Top entry or side entry configuration
- RoHS Compliant



Specifications

Insulator Material	UL 94V-0 Thermoplastic PA66, Natural Color	
Contact Material	Brass (Pin Header)	Phosphor Bronze (Crimp)
Contact Plating	Gold Flash, Tin Plated	
Current Rating	7 Amps	
Contact Resistance	10 Milliohms maximum	
Dielectric Withstanding Voltage	1500 VAC/minute	
Insulation Resistance	1000 Megaohms minimum	
Operating Temperature	-25°C to +105°C *	
Applicable Wire	22-18 AWG	

* Operating temperature range of -40°C to +105°C for pin headers.

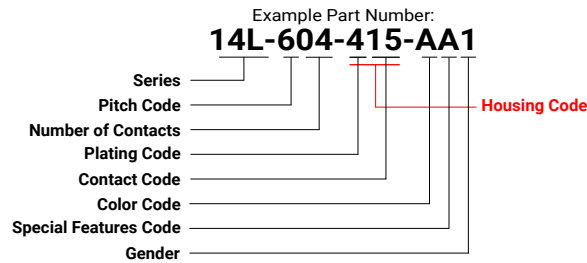


*** Please see next page for options

14L Series



Wire-to-Board Connectors .156" (3.96mm) Pitch

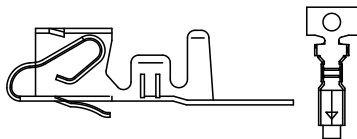


Series	Description
14L	Wire-to-Board
Pitch Code	Description
6	.156" (3.96mm)
Number of Contacts	
02, 03, 04, 05, 06, 07, 08, 09, 10, 11, 12, 13, 14, 15	
Plating Code	Description
2	Gold Flash
4	Tin Plated
Contact Code - Pin Headers	Description
15	Top Entry, Through Hole, Straight
16	Side Entry, Through Hole, Straight
Housing Code	Description
210	Housing (Note 1)
Color Code	Description
A	Natural
Special Features Code	Description
For housing only Use housing code 210	
A	None
For pin headers only	
A	None
Gender	Description
1	Pin (Note 2)
2	Socket (Note 3)

Crimp Contact Ordering Code

Part Number	Wire Gauge	Description	Gender
14L-292-282	22-18 AWG	Gold Flash	Socket (Use with socket housing only)
14L-292-482	22-18 AWG	Tin Plated	Socket (Use with socket housing only)

Socket Contact



Ordering Notes

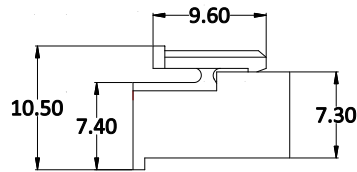
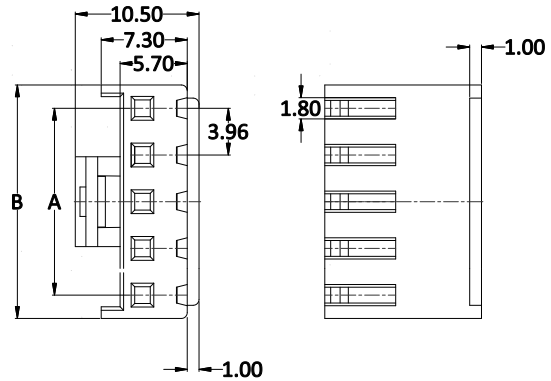
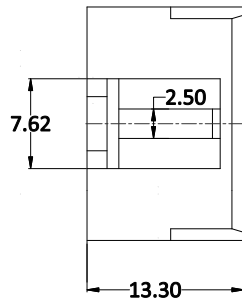
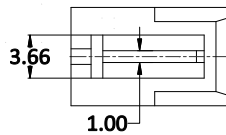
- "Housing Code" replaces the "Plating Code" and "Contact Code - Pin Headers". Contact options can be found in the "Crimp Contact Ordering Code" table.
- Use with pin headers only.
- Use with housing code 210 only.

Dimension Table

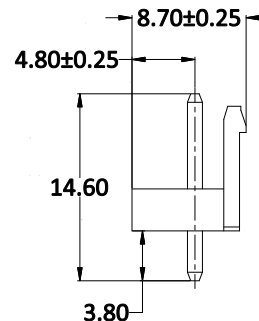
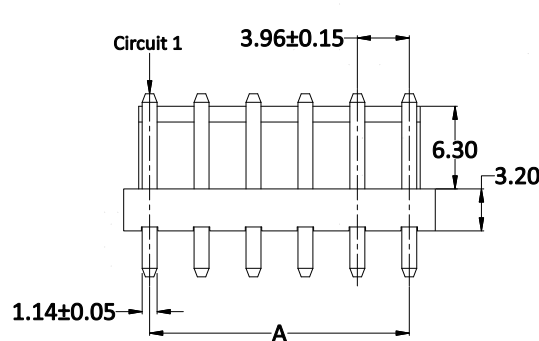
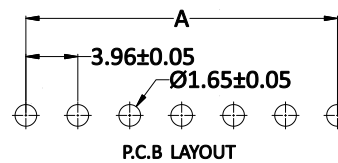
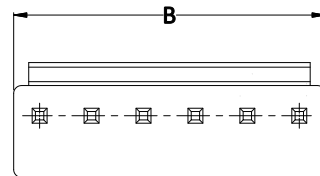
No. of Contacts	Dimensions		No. of Contacts	Dimensions	
	A	B		A	B
2	3.96	7.92	9	31.68	35.64
3	7.92	11.88	10	35.64	39.60
4	11.88	15.84	11	39.60	43.56
5	15.84	19.80	12	43.56	47.52
6	19.80	23.76	13	47.52	51.48
7	23.76	27.72	14	51.48	55.44
8	27.72	31.68	15	55.44	59.40

Socket Housing

ONLY FOR 2 CONTACT POSITIONS



Through Hole Type Headers - Top Entry

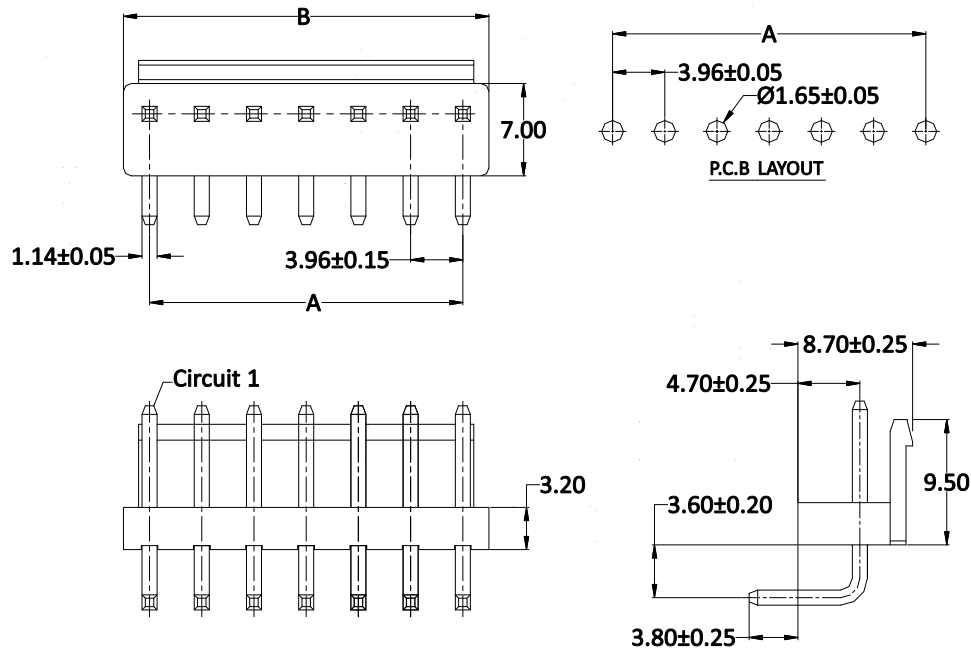


14L Series

Wire-to-Board Connectors .156" (3.96mm) Pitch



Through Hole Type Headers - Side Entry



Tooling

Hand Crimp Tool

Part Number	Description
14L-280-201	14L Series Hand Crimp Tool, Male/Female Contact, 22-18 AWG

Applicators *

Part Number	Description
14L-280-751	EDAC Press Applicator 14L Contact series 22-18 AWG
14L-280-751K	K Press Applicator 14L Contact series 22-18 AWG
14L-280-751G	G Press Applicator 14L Contact series 22-18 AWG

* Applicators are made to order. For additional support, contact EDAC at Support@edac.net

X-ON Electronics

Largest Supplier of Electrical and Electronic Components

Click to view similar products for [Headers & Wire Housings](#) category:

Click to view products by [EDAC](#) manufacturer:

Other Similar products are found below :

[892-18-020-10-001101](#) [0010894062](#) [0010977306](#) [0015477636](#) [0015917161](#) [0022104068](#) [0022121042](#) [0022155065](#) [0022281023](#) [57102-F02-18ULF](#) [58102-G61-06LF](#) [582553-1](#) [0015911208](#) [01.001.5753.1](#) [0022285048](#) [0050291907](#) [02.125.8002.8](#) [CSU011177004](#) [622-0430](#) [622-3653LF](#) [63453-116](#) [636-1030](#) [636-1427](#) [636-3427](#) [636-4007](#) [641938-9](#) [65495-038](#) [65692-001LF](#) [65781-018](#) [65781-047](#) [65817-010LF](#) [65817-015LF](#) [67095-007LF](#) [67601157](#) [68631-112](#) [68645-018](#) [699319-000](#) [70.362.1628.0](#) [70-4210](#) [70-4226B](#) [70-4853B](#) [707-5028](#) [71.350.2428.0](#) [733-134](#) [733-162](#) [760-3052](#) [MHR-64-VUAL](#) [80.063.4001.1](#) [800-90-001-10-001000](#) [801-43-002-10-013000](#)