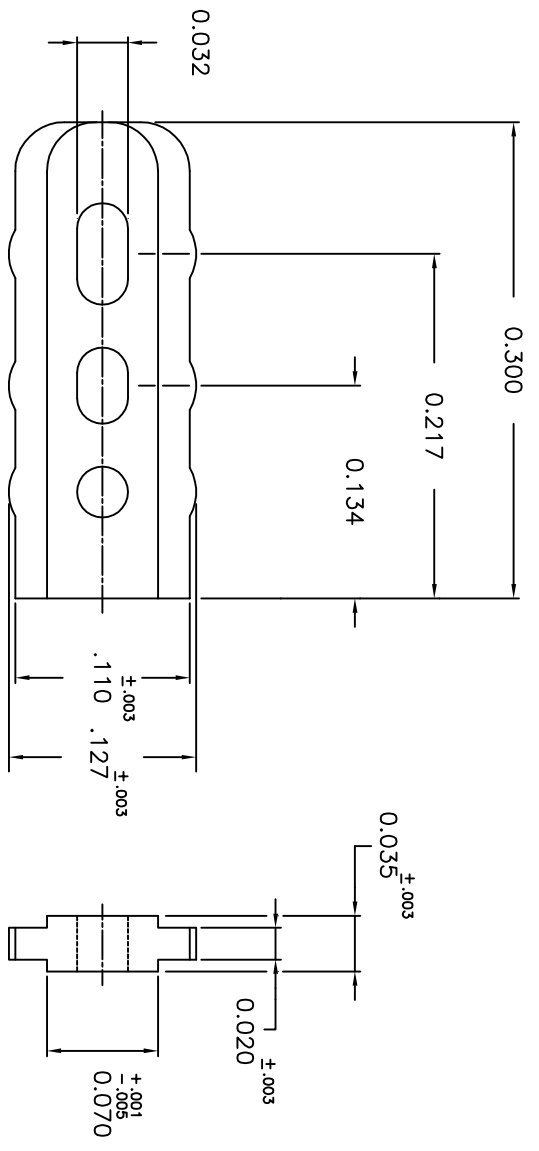


DRAWING NUMBER	306-240-318	ISSUE	9
PART NUMBER	306-240-318		



NOTES

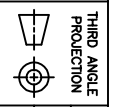
- 1) MATERIAL: NYLON 6/6, 30% GLASS REINFORCED, COLOUR - NATURAL
- 2) MOULDED PART SHALL BE IN ACCORDANCE WITH EDAC SPECIFICATION #110-0211
- 3) THIS POLARIZING KEY IS USED FOR THE 306 SERIES CONNECTOR AS WELL AS VARIOUS OTHER CONNECTORS (E.G. 305, 307, 346, 746, ETC.)

ACAD REFERENCE NO.
30624001

RECOMMENDED DISPOSITION OF STOCK (PRIOR ISSUE PARTS)	
<input type="checkbox"/> SCRAP	<input type="checkbox"/> INSPECT
<input type="checkbox"/> REWORK	<input type="checkbox"/> USE AS IS
<input type="checkbox"/> SEE ENGINEERING MEMO	
ISSUE NUMBER	
ORIGINAL	①
REDRAWN ON CAD WITH VARIOUS REVISIONS	
ECN #89-083	
KL AUG 18/89	⑦
DIM. .120±.003 WAS .118±.003	
F.BRIONES OCT.6/98	⑧
DIM. .127±.003 WAS .120±.003	
F.BRIONES JUN. 27/08	⑨

TOLERANCE UNLESS NOTED	
DIMENSION	TOLERANCE
.00	± .010
.000	± .005
.0000	± ----
ANGULAR	± ----

DRAWING NOTES:
 1) DO NOT SCALE DRAWING.
 2) DIMENSIONS ARE IN INCHES AND INCLUDE THICKNESS OF PLATING.
 3) ALL SCREW THREADS TO BE CLASS 2 FIT (AMSTD.) UNLESS OTHERWISE SPECIFIED.



EDAC INC
 TORONTO, ONTARIO
 CANADA
 YOUR CONNECTION TO QUALITY & SERVICE

THESE DRAWINGS AND SPECIFICATIONS ARE THE PROPERTY OF EDAC INC. AND SHALL NOT BE REPRODUCED, OR COPIED OR USED AS THE BASIS FOR THE MANUFACTURE OR SALE OF APPARATUS WITHOUT WRITTEN PERMISSION.

306 SERIES POLARIZING KEY		DRAWN: R. WEAVER	DATE: JUL 15/80
PART NUMBER 306-240-318		CHECKED:	DATE:
		ENG. APPR:	DATE:
SCALE: 10:1		SHEET 1 OF 1	
DRAWING NUMBER	306-240-318	ISSUE	9

X-ON Electronics

Largest Supplier of Electrical and Electronic Components

Click to view similar products for [Standard Card Edge Connectors](#) category:

Click to view products by [EDAC](#) manufacturer:

Other Similar products are found below :

[CR7E-30DB-3.96E\(72\)](#) [6565204-6](#) [PKC-156](#) [1437274-4](#) [147889-1](#) [1489165-4](#) [EBT15622B2X](#) [1-582587-1](#) [284-0102-12100](#)
[306022901000000](#) [307-012-502-202](#) [307-056-520-300](#) [245-062-520-350](#) [287-0032-12101](#) [306-028-525-102](#) [307-072-526-202](#) [345-060-559-](#)
[303](#) [392-008-559-201](#) [534671-1](#) [341-240-317](#) [345-044-500-300](#) [346-240-318](#) [395-100-524-300](#) [09-07-2032](#) [10035388-802LF](#) [10122859-](#)
[009LF](#) [10127905-B04B24BLF](#) [530555-1](#) [5-678046-1](#) [73726-0005](#) [66308-1](#) [1-1437275-6](#) [PEC-07-02-T-S-A](#) [346-014-520-801](#) [307-048-502-](#)
[202](#) [CE100F22-9-C](#) [CE100F26-7-C](#) [CE100F28-3-D](#) [CE156F18-9-C](#) [CE156F22-5-D](#) [CE156F22-9-C](#) [CT100F22-2-D](#) [CT100F22-3-D](#)
[CT100F24-2-D](#) [CT100F24-3-D](#) [CT100F24-6-C](#) [CT156F22-4-D](#) [MLSS100-12-C](#) [MLSS100-16-C](#) [SCC100F-11-C](#)