

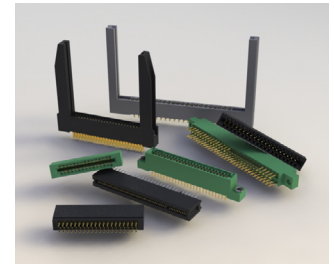
346/396 SERIES



Card Edge Connectors 0.125" (3.175mm) Pitch

Features:

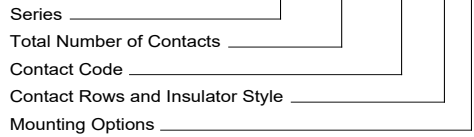
- 0.100" (2.54mm) contact spacing x 0.200" (5.08mm) row spacing
- Accepts 0.062" (1.57mm) nominal thickness P.C. board
- High profile insulator body, 0.600" (15.24mm)
- Contact termination options include P.C. tail, wire wrap, 90 degree bends and extender board bends
- Single or dual row configurations
- Large variety of mounting options, flush or offset lugs
- Accepts between contact and in-contact polarizing keys
- Pre-assembled card guides are available
- Automatic wire wrap positioning holes
- RoHS Compliant & UL Certified



Specifications:

| | |
|---------------------------------|--|
| Insulator Material | UL 94V-0 Thermoplastic Polyester |
| Contact Material | Copper Alloy |
| Contact Plating | Gold Plating on mating area and Tin Plating on tails with Nickel underplating all over |
| Current Rating | 3 amps |
| Contact Resistance | 10 milliohms maximum |
| Dielectric Withstanding Voltage | 1500 V AC rms at sea level between adjacent contacts |
| Insulation Resistance | 5000 megaohms minimum |
| Operating Temperature | -40°C to +105°C |
| Insertion Force | 16 oz (4.45 N) maximum per contact pair when tested with .070" (1.78mm) thick gauge |
| Withdrawal Force | 1 oz (0.28 N) minimum per contact pair when tested with .054" (1.37mm) thick gauge |

Example Part Number: **346-056-540-802**



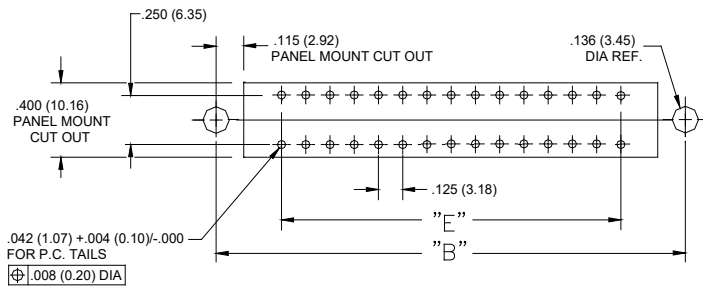
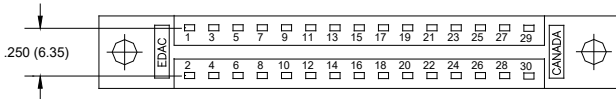
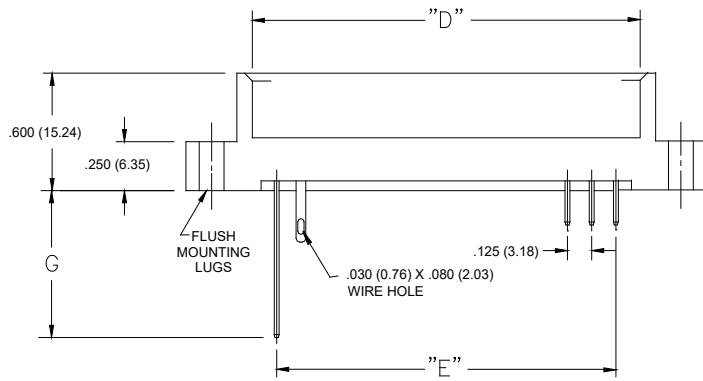
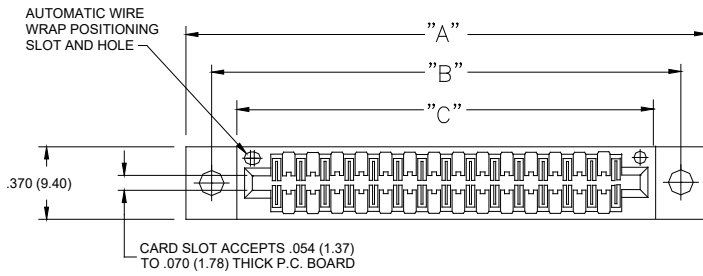
| | | |
|----------------------------------|---|-------------------------|
| Series: | Insulator Color: | |
| 346 | Thermoplastic Polyester, Green | |
| 396 | Thermoplastic Polyester, Black | |
| Total Number of Contacts: | Contact Rows: | |
| 005, 006, 050 | Single Row | |
| 010, 012, 100 | Dual Row | |
| Insulator Style: | Description: | Insulator Style |
| 1 | Single Row | Flush Mounting Lugs |
| 2 | Dual Row | Flush Mounting Lugs |
| 6 | Single Row | .170 (4.32) Offset Lugs |
| 8 | Dual Row | .170 (4.32) Offset Lugs |
| Mounting Options: | Description: | |
| 01 | No Mounting Lug | |
| 02 | Ø.128" (Ø3.25mm) Mounting Holes | |
| 03 | Ø.116" (Ø2.95mm) I.D. Floating Eyelets | |
| 04 | Ø.156" (Ø3.96mm) Mounting Holes | |
| 07 | M3-0.5 Metric Threaded Inserts | |
| 08 | #4-40 Unified Threaded Inserts | |
| 12 | Ø.128" (Ø3.25mm) Side Mounting Holes | |
| 58 | .468" (11.89mm) Offset Card Guides | |
| 78 | In-Line Card Guides 2.750" (69.85mm) Long | |

| Contact Code: | Tail Description: | Tail Size: | Tail Length "G": |
|---------------|---------------------|---------------------------|------------------|
| 500 | Wire Hole | .050 x .025 (1.27 x 0.64) | .260 (6.60) |
| 520 | P.C. Tail | .025 Square (0.64 Square) | .175 (4.45) |
| 521 | P.C. Tail | .025 Square (0.64 Square) | .150 (3.81) |
| 522 | P.C. Tail | .025 Square (0.64 Square) | .440 (11.18) |
| 526 | P.C. Tail | .025 Square (0.64 Square) | .150 (3.81) |
| 540 | Wire Wrap | .025 Square (0.64 Square) | .560 (14.22) |
| 541 | Wire Wrap | .025 Square (0.64 Square) | .750 (19.05) |
| 555 | EXTENDER BOARD BEND | (CODE 500 CONTACTS) | |
| 556 | EXTENDER BOARD BEND | (CODE 520 CONTACTS) | |
| 558 | 90 DEGREE BEND | (CODE 541 CONTACTS) | |
| 559 | 90 DEGREE BEND | (CODE 541 CONTACTS) | |
| 560 | EXTENDER BOARD BEND | (Code 526 Contacts) | |

Ordering Code Notes:

- 1) All connector sizes up to 50 contacts single row / 100 contacts dual row are available upon request.
- 2) The 500 contact code is only available in the 346 series. Green Diallyl Phthalate insulator material will be supplied.
- 3) For details of the extender board and 90 degree bends refer to next pages.
- 4) Consult with EDAC Inc. regarding connectors with a .420" (10.67mm) card slot depth.
- 5) For lug-less connectors, code 01 mounting, specify contact row code 1 or 2.
- 6) In-line card guides are only available with offset mounting lugs.
- 7) For details of the mounting options refer to page 3.

Card Edge Connectors 0.125" (3.175mm) Pitch



CONNECTOR MOUNTING PATTERN

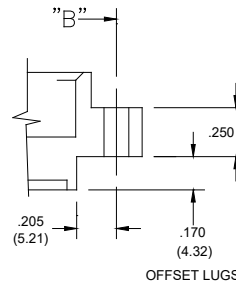
IN-CONTACT POLARIZING KEY

P/N 345-240-328

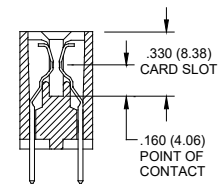


BETWEEN CONTACT POLARIZING KEY

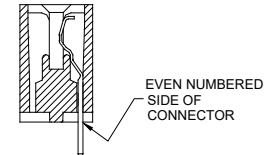
P/N 306-240-318



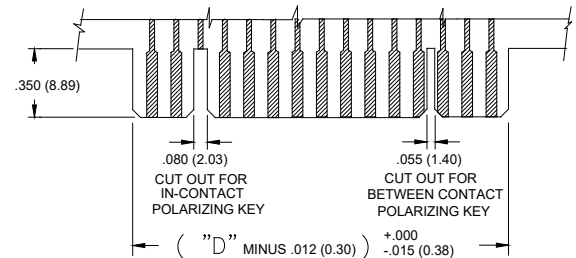
SECTIONS THROUGH CONTACT POSITION



DUAL ROW



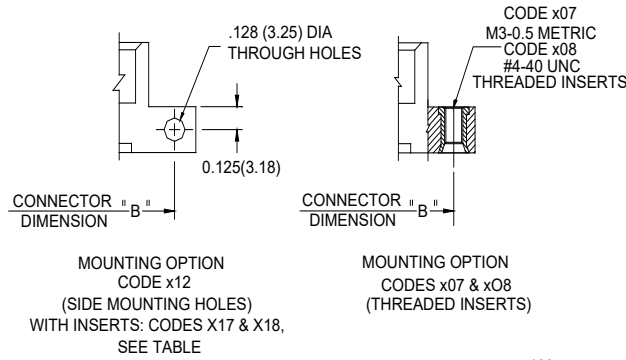
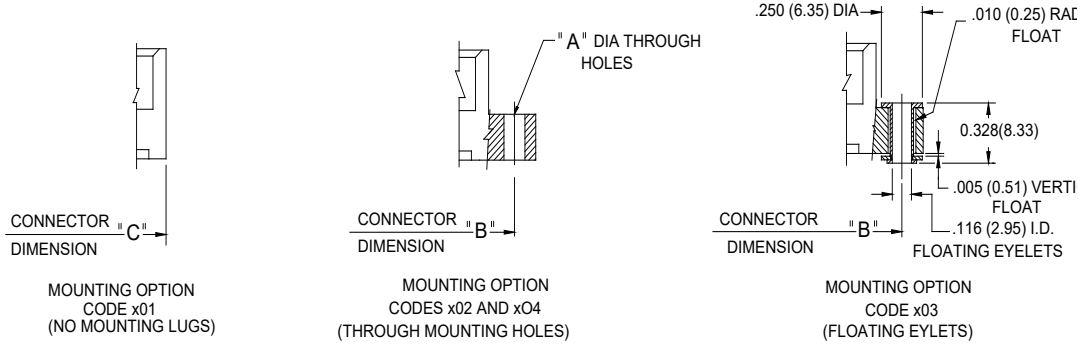
SINGLE ROW



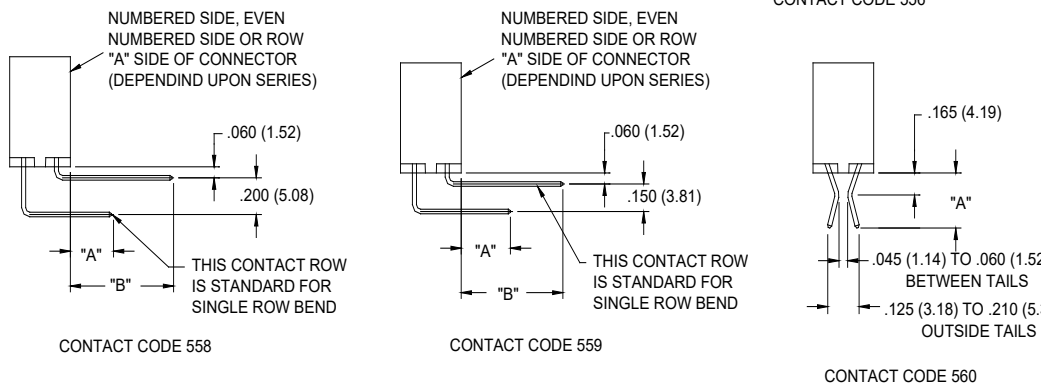
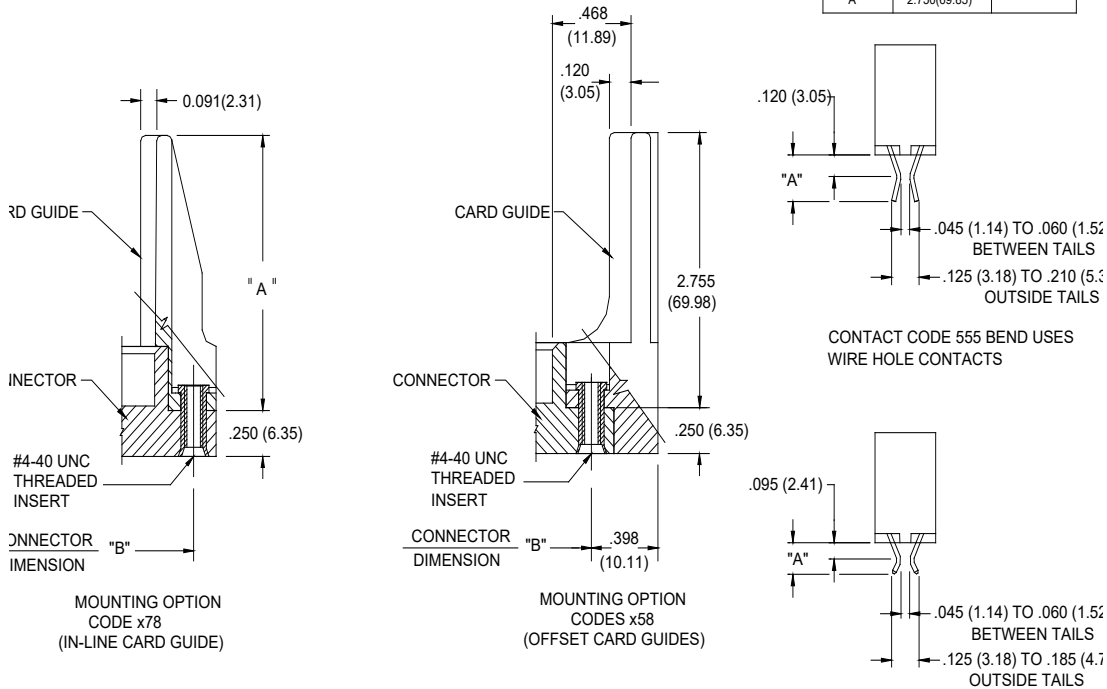
RECOMMENDED DAUGHTER BOARD

| NUMBER OF CONTACTS | | "A" | | "B" | | "C" | | "D" | | "E" | |
|--------------------|--------|-------|--------|-------|--------|-------|--------|-------|--------|-------|--------|
| Single | Double | Inch | mm | Inch | mm | Inch | mm | Inch | mm | Inch | mm |
| 5 | 10 | 1.435 | 36.45 | 1.170 | 29.72 | 0.910 | 23.11 | 1.435 | 36.45 | 0.500 | 12.70 |
| 6 | 12 | 1.560 | 39.62 | 1.295 | 32.89 | 1.035 | 26.29 | 1.560 | 39.62 | 0.625 | 15.88 |
| 10 | 20 | 2.060 | 52.32 | 1.795 | 45.59 | 1.535 | 38.99 | 2.060 | 52.32 | 1.125 | 28.58 |
| 15 | 30 | 2.685 | 68.20 | 2.420 | 61.47 | 2.160 | 54.86 | 2.685 | 68.20 | 1.750 | 44.45 |
| 18 | 36 | 3.060 | 77.72 | 2.795 | 70.99 | 2.535 | 64.39 | 3.060 | 77.72 | 2.125 | 53.98 |
| 22 | 44 | 3.560 | 90.42 | 3.295 | 83.69 | 3.035 | 77.09 | 3.560 | 90.42 | 2.625 | 66.68 |
| 25 | 50 | 3.935 | 99.95 | 3.670 | 93.22 | 3.410 | 86.61 | 3.935 | 99.95 | 3.000 | 76.20 |
| 30 | 60 | 4.560 | 115.82 | 4.295 | 109.09 | 4.035 | 102.49 | 4.560 | 115.82 | 3.625 | 92.08 |
| 31 | 62 | 4.685 | 119.00 | 4.420 | 112.27 | 4.160 | 105.66 | 4.685 | 119.00 | 3.750 | 95.25 |
| 35 | 70 | 5.185 | 131.70 | 4.920 | 124.97 | 4.660 | 118.36 | 5.185 | 131.70 | 4.250 | 107.95 |
| 36 | 72 | 5.310 | 134.87 | 5.045 | 128.14 | 4.785 | 121.54 | 5.310 | 134.87 | 4.375 | 111.13 |
| 40 | 80 | 5.810 | 147.57 | 5.545 | 140.84 | 5.285 | 134.24 | 5.810 | 147.57 | 4.875 | 123.83 |
| 43 | 86 | 6.185 | 157.10 | 5.920 | 150.37 | 5.660 | 143.76 | 6.185 | 157.10 | 5.250 | 133.35 |
| 50 | 100 | 7.060 | 179.32 | 6.795 | 172.59 | 6.535 | 165.99 | 7.060 | 179.32 | 6.125 | 155.58 |

Card Edge Connectors 0.125" (3.175mm) Pitch



| CODE X02 AND X04 - THROUGH MTG. HOLES | | |
|---------------------------------------|----------------|-------------|
| | CODE X02 | CODE X04 |
| "A" DIA. | 0.128(3.25) | 0.156(3.96) |
| CODE X07 AND X08 - THREADED INSERTS | | |
| | CODE X07 | CODE X08 |
| INSERT | M3-0.5(METRIC) | #4-40 UNC |
| SIDE MOUNTING HOLES WITH INSERTS | | |
| | CODE X17 | CODE X18 |
| INSERT | M3-0.5(METRIC) | #4-40 UNC |
| CODE X78 - IN-LINE CARD GUIDES | | |
| | CODE X78 | |
| "A" | 2.750(69.85) | |



X-ON Electronics

Largest Supplier of Electrical and Electronic Components

Click to view similar products for [Standard Card Edge Connectors](#) category:

Click to view products by [EDAC](#) manufacturer:

Other Similar products are found below :

[CR7E-30DB-3.96E\(72\)](#) [6565204-6](#) [PKC-156](#) [1437274-4](#) [147889-1](#) [1489165-4](#) [EBT15622B2X](#) [1-582587-1](#) [284-0102-12100](#)
[306022901000000](#) [307-012-502-202](#) [307-056-520-300](#) [245-062-520-350](#) [287-0032-12101](#) [306-028-525-102](#) [307-072-526-202](#) [345-060-559-](#)
[303](#) [392-008-559-201](#) [534671-1](#) [341-240-317](#) [345-044-500-300](#) [346-240-318](#) [395-100-524-300](#) [09-07-2032](#) [10035388-802LF](#) [10122859-](#)
[009LF](#) [10127905-B04B24BLF](#) [530555-1](#) [5-678046-1](#) [73726-0005](#) [66308-1](#) [1-1437275-6](#) [PEC-07-02-T-S-A](#) [346-014-520-801](#) [307-048-502-](#)
[202](#) [CE100F22-9-C](#) [CE100F26-7-C](#) [CE100F28-3-D](#) [CE156F18-9-C](#) [CE156F22-5-D](#) [CE156F22-9-C](#) [CT100F22-2-D](#) [CT100F22-3-D](#)
[CT100F24-2-D](#) [CT100F24-3-D](#) [CT100F24-6-C](#) [CT156F22-4-D](#) [MLSS100-12-C](#) [MLSS100-16-C](#) [SCC100F-11-C](#)