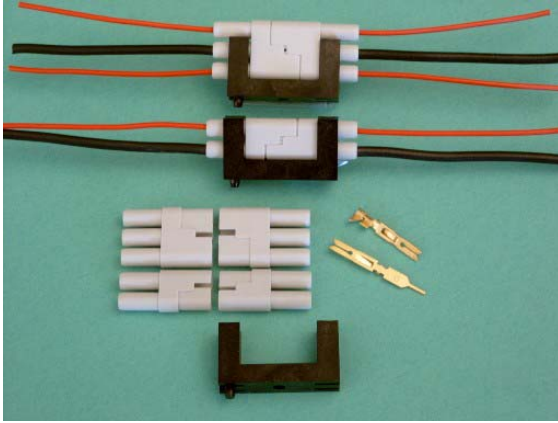


# 520 Series Panel Connector



## Part Numbers

<b>520-210-002</b>	<b>2 circuit housing</b>
<b>520-210-003</b>	<b>3 circuit housing</b>
<b>520-220-001</b>	<b>Retention clip</b>

## Contact code (order separately):

516-290-500	Wire hole
516-290-542	Wire wrap (0.61x1.27x14.4mm)
516-290-520	PCB tail
516-290-590	Loose crimp contacts
516-290-591	Crimp contacts on reel (1,800)

## Prices on request for:

1. Housings supplied with contacts assembled
2. Housings with cable tails crimped & assembled

## FEATURES

- Utilises EDAC gold-plated, hermaphroditic, contacts producing ultra-reliable connection with four gas-tight mating surfaces: A top quality, yet highly cost-effective, interconnect product.
- Board mount or in-line contact tail options.
- Identical insulator for plug and receptacle enabling one part number to be ordered/stocked
- 2 or 3 way options.
- Clip available to neatly secure mated connector to panel when used in-line.

## SPECIFICATIONS

- **Materials:**  
Housing and locking clip – Glass-filled thermoplastic  
Contacts – Phosphor bronze alloy, all-over gold plate to 10u”
- **Electrical**  
Contact rating – 8.5 amperes  
Contact resistance – 6 milliohms max.  
Insulation resistance – 5,000 megohms min.  
Voltage proof – 2,500 volts R.M.S. sea level

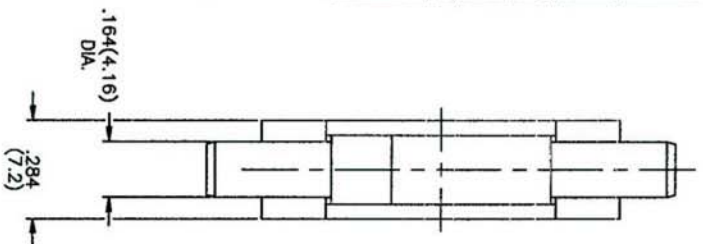
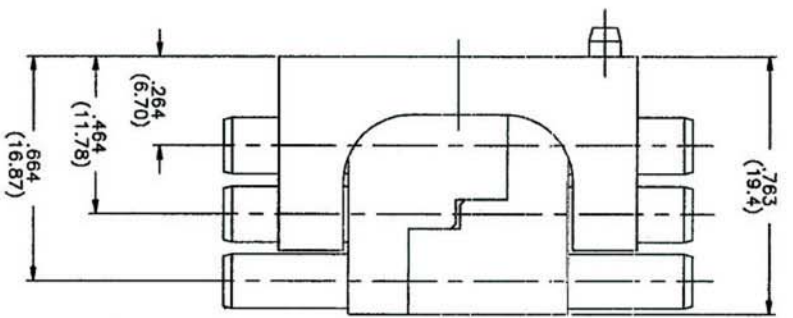
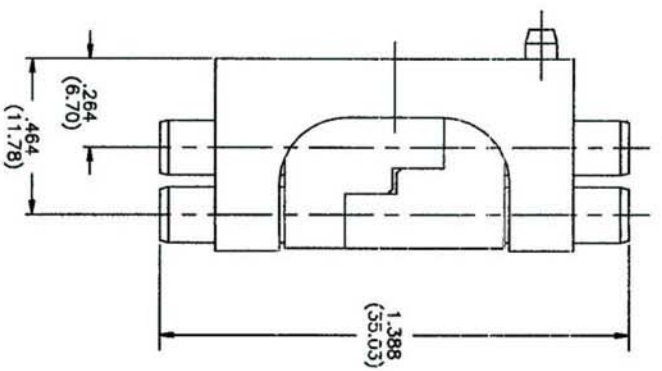
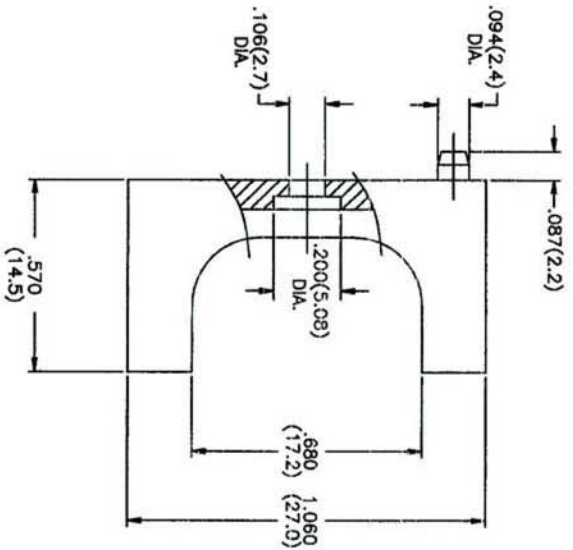
EDAC (Europe) Ltd., Brick Close, Kiln Farm,  
Milton Keynes, MK11 3JB, United Kingdom

Tel: +44 (0) 1908 569333 Fax: +44 (0) 1908 569444

[sales@edac.co.uk](mailto:sales@edac.co.uk)

**EDAC** (Europe) 

[www.edac.net](http://www.edac.net)



**MATERIALS:**  
 HOUSING AND LOCKING CLIP: THERMOPLASTIC GLASS FILLED  
 CONTACTS: PHOSPHOR BRONZE ALLOY CA-510

**ELECTRICAL SPECIFICATIONS**  
 CONTACT RATING: 8.5 AMPERES  
 CONTACT RESISTANCE: 6 MILLIOHMS MAX.  
 INSULATION RESISTANCE: 5000 MEGOHMS MIN.  
 VOLTAGE PROOF: 2500 VOLTS R.M.S SEA LEVEL

<b>520 SERIES CABLE CONNECTOR</b>		ACAD REFERENCE NO.	520SER	
EDAC INC TORONTO, ONTARIO CANADA		DRAWN: F. BRIONES	DATE: FEB. 21/02	
THESE DRAWINGS AND SPECIFICATIONS ARE THE PROPERTY OF EDAC INC. AND SHALL NOT BE REPRODUCED OR COPIED OR USED AS THE BASIS OF ANY MANUFACTURE WITHOUT WRITTEN PERMISSION.		CHECKED:	DATE:	
SCALE: (IN C.A.D. 1:1)		SHEET 1 OF 1		
DRAWING NUMBER		ISSUE		
520-002-000-00		5		

**EDAC INC**  
 TORONTO, ONTARIO  
 CANADA  
 YOUR CONNECTION TO QUALITY & SERVICE

## X-ON Electronics

Largest Supplier of Electrical and Electronic Components

*Click to view similar products for [Headers & Wire Housings](#) category:*

*Click to view products by [EDAC](#) manufacturer:*

Other Similar products are found below :

[892-18-020-10-001101](#) [58102-G61-06LF](#) [582553-1](#) [0009485154](#) [009176003701906](#) [0050291907](#) [LY20-4P-DT1-P1E-BR](#) [02.125.8002.8](#)  
[609-3404](#) [61062-3](#) [622-0430](#) [622-3653LF](#) [63453-116](#) [636-1030](#) [636-1427](#) [636-3427](#) [636-4007](#) [641938-9](#) [641991-4](#) [644827-2](#) [65817-010LF](#)  
[65817-015LF](#) [65863-015LF](#) [66207-023LF](#) [67095-007LF](#) [67601157](#) [68648-049](#) [70.362.1628.0](#) [70-4210](#) [70-4226B](#) [70-4853B](#) [707-5020](#) [707-5028](#) [71.350.2428.0](#) [71918-208LF](#) [71961-016LF](#) [733-134](#) [733-162](#) [754199-000](#) [760-3052](#) [787-8014-00](#) [79531-3000](#) [FCN-360C032-B](#) [FCN-367T-T012/H](#) [FCN-723D010/2](#) [80.063.4001.1](#) [800-90-001-10-001000](#) [800-90-010-10-002000](#) [801-43-002-10-013000](#) [801-43-006-10-002000](#)