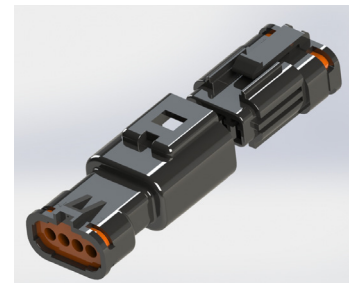


Features:

- 2.0mm pitch, rated current: 2A max
- Fully waterproof solution available in 2, 3, 4, or 6 positions (2 and 3 positions only for wire to board)
- Available in wire to wire and wire to board options
- Seals preassembled into housing; no external sealing required
- True crimp and poke solution
- Waterproofing cap available to cover unused positions
- Available with wire already installed
- Waterproof Grade: IP67 Certified

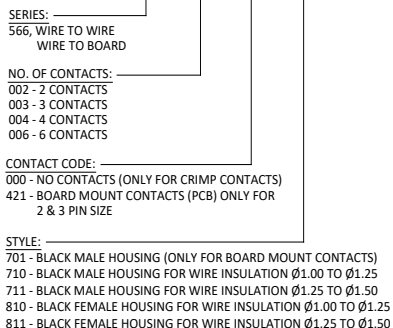


Specifications:

No. of Positions	2, 3, 4, or 6
Pitch	2.0 mm
Rated Voltage	250 V
Rated Current	2 amps maximum
Dielectric Withstanding Voltage	1000 V AC (rms)
Contact Resistance	10 milliohms maximum
Insulation Resistance	1000 megaohms minimum/DC 500 V
Operating Temperature	-40°C to +105°C
PCB Thickness	1.6 mm

Ordering Code:

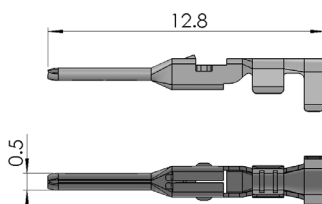
566-002-000-710



Crimp Contact:

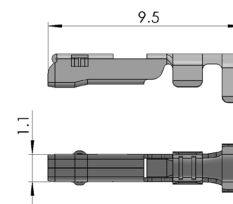
Male Contact (Pin)			
Part No	AWG#	Ins. Dia.	Pcs/Reel
566-290-711	22-28	Ø1.0~Ø1.5	12,000

**Crimp Contacts are also available in strips of 60pcs. Contact EDAC for more information.



Female Contact (Socket)			
Part No	AWG#	Ins. Dia.	Pcs/Reel
566-290-721	22-28	Ø1.0~Ø1.5	12,000

**Wire seals and housing seals are already pre-assembled in the connector.



Materials:

Crimp & Poke	Housing	PBT, UL 94V-0
	Contact	Phosphor Bronze
PCB Header	Housing	PBT with Glass, UL 94V-0
	Contact	Brass
Contact Plating		Tin Plating
Wire & Housing Seals		Silicone Rubber
Waterproofing Cap		PBT, UL 94V-0

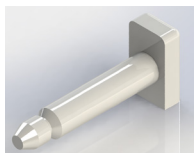
Rear Gasket (Wire Seal):

Applicable Contact	Wire O.D.	Color
566-290-711	Ø1.00 to Ø1.25	Light Blue
566-290-721	Ø1.25 to Ø1.50	Orange



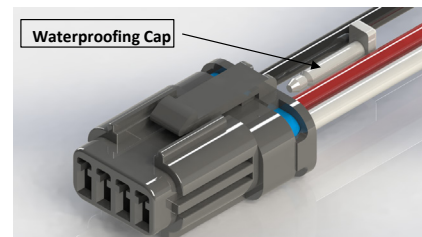
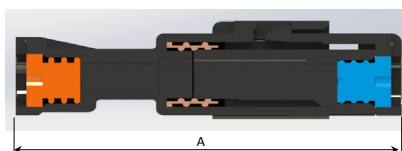
Waterproofing Cap:

Part No.
566-200-100



Assembly Layout:

PIN SIZE:	A (mm) LENGTH:
2P, 3P, 4P	28.85
6P	29.05

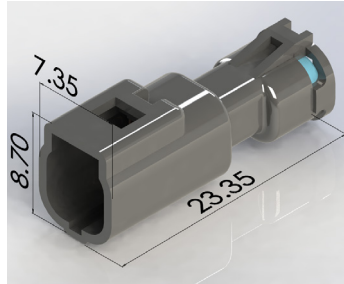


Male Housing:

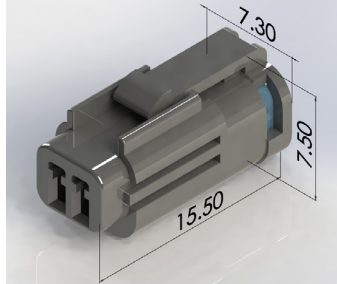
Female Housing:

PCB Header

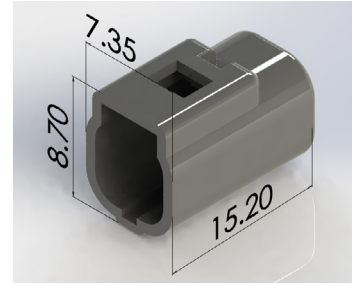
566-002-000-XXX



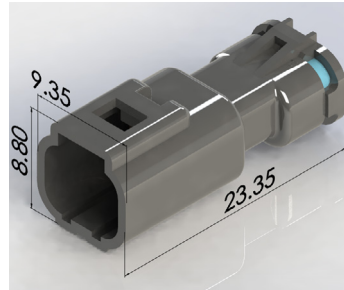
566-002-000-XXX



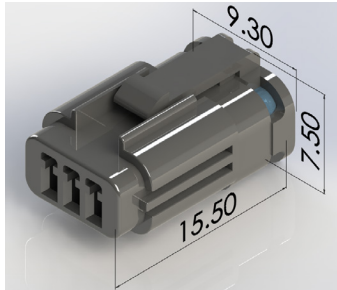
566-002-421-701



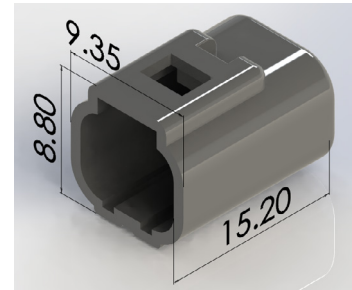
566-003-000-XXX



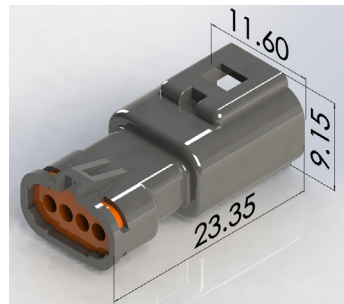
566-003-000-XXX



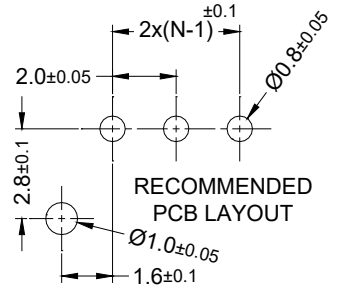
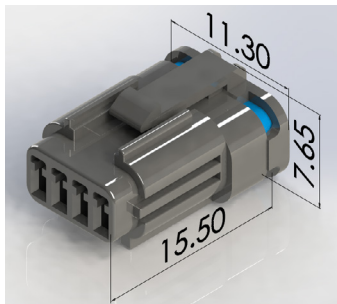
566-003-000-XXX



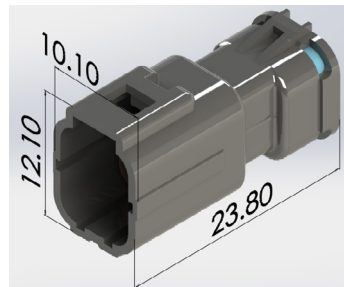
566-004-000-XXX



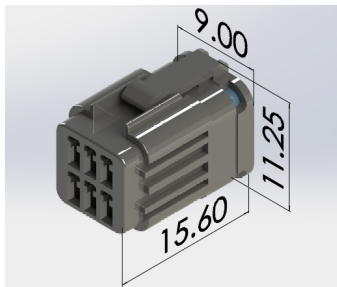
566-004-000-XXX



566-006-000-XXX



566-006-000-XXX



Male Housing:

Female Housing:

Ø Wire Insulation	Housing Color	XXX
"Ø1.00 to Ø1.25"	Black	710
"Ø1.25 to Ø1.50"	Black	711

Ø Wire Insulation	Housing Color	XXX
"Ø1.00 to Ø1.25"	Black	810
"Ø1.25 to Ø1.50"	Black	811

X-ON Electronics

Largest Supplier of Electrical and Electronic Components

Click to view similar products for [Pin & Socket Connectors](#) category:

Click to view products by [EDAC](#) manufacturer:

Other Similar products are found below :

[6450822-1](#) [770392-1](#) [794042-1](#) [796885-1](#) [8-794535-1](#) [PLR3455ACS-222](#) [R929991004](#) [R929993003](#) [1403611-1](#) [1-480349-5](#) [152302-5](#)
[153211-2](#) [1586092-1](#) [1586129-1](#) [1586681-4](#) [1586700-1](#) [1586368-1](#) [1586380-1](#) [1586616-1](#) [1586680-5](#) [16-06-0038](#) [164164-5](#) [1-6609930-1](#)
[172296-1](#) [19-09-2035](#) [200503-1](#) [200788-2](#) [2029090-4](#) [2029095-4](#) [925061-7](#) [293734-4](#) [293737-2](#) [1-765362-4](#) [1871534-1](#) [200833-4](#)
[2008625-2](#) [2029027-2](#) [2029096-4](#) [R929991000](#) [R929991002](#) [R929993000](#) [319-10-101-00-005000](#) [319-10-102-00-001000](#) [319-10-104-00-001000](#) [319-10-105-00-001000](#) [319-10-108-00-001000](#) [319-10-112-00-006000](#) [39-01-8019](#) [319-10-101-00-001000](#) [319-10-102-00-005000](#)