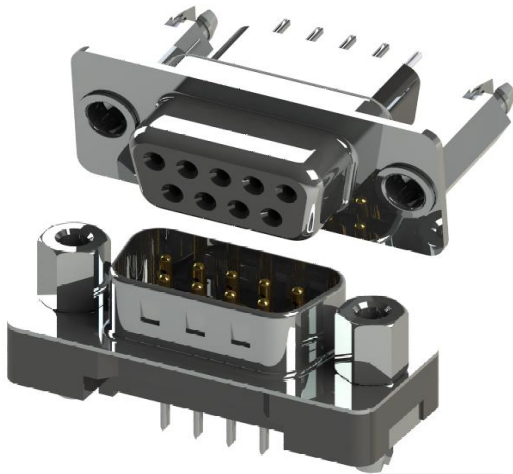




SERIES 627/628: D-SUB CONNECTOR

Plug and Receptacle, Vertical, PCB Mount, *Plastic Body*

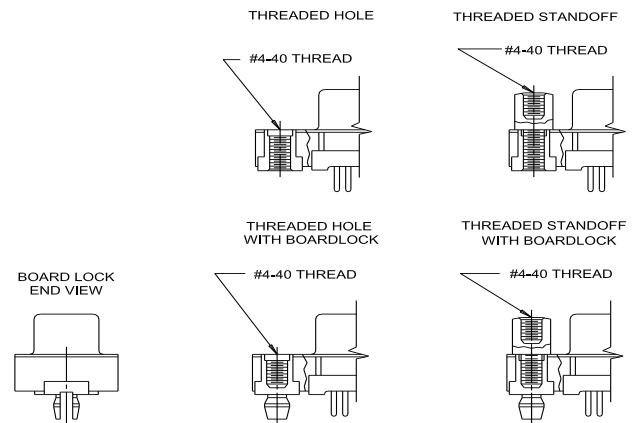


- Low Profile Only
- .109"(2.77mm) Contact Spacing x .112"(2.84mm) Row Spacing
- Plug and Receptacle in 9, 15, 25 and 37 Contact Sizes
- Pin and Socket Contact Mating Design with P.C. Tail Termination
- Metal Shell Provides EMI/RFI Shielding, Plug Shell Indents provide Grounding and Additional Mating Retention
- Grounding Feature include Boardlock for Exceptional Retention to P.C. Board
- Flange Mounting Options for Panel Mount or Connector Mating include Threaded Hole and Threaded Standoff
- D-Shaped Connector Mating Outline provides Polarization
- Design based on Requirements of MIL-C-24038, EIA RS-232 and RS-449
- IDC Type - Contact Customer Service at customerservice@edac.net
- High Temp Insulator - Contact Customer Service at customerservice@edac.net

Specifications:

Insulator Material	Thermoplastic Polyester, UL 94V-0, Chemical Resistant, Color: Black
Contact Material	Plug (Pins): Brass Receptacle (Socket): Brass
Contact Plating	Selective Gold (See Ordering Code) over Nickel for the Mating Area, Tin Plating for Tail Area
Ferrite Specs:	20dB MIN @30 MHz, 30dB MIN @50 MHz, and 50dB MIN @100 MHz
Shell Material	Nickel Plated Steel (Optional Tin Plating)
Current Rating	3A Per Contact
Contact Resistance	25 Milliohms MAX
Insulation Resistance	5000 Megaohms MIN
Dielectric Voltage	1000V AC rms at Sea Level
Operating Temp.	-55°C To +85°C
Mating Force	16 oz (4.45N) Maximum Per Contact Position
Unmating Force	1 oz (0.28N) Minimum Per Contact Position

FLANGE MOUNTING OPTIONS



Ordering Code:

627-025-220-013

SERIES: _____
627: PLUG (PIN)
628: RECEPTACLE (SOCKET)

NO. OF CONTACTS: _____
009 - 9 CONTACTS 025 - 25 CONTACTS
015 - 15 CONTACTS 037 - 37 CONTACTS

CONTACT FINISH CODE: _____
2 - GOLD FLASH PLATING
3 - 15 MICROINCHES OF GOLD PLATING
6 - 30 MICROINCHES OF GOLD PLATING

CONTACT CODE: _____
20 - .105"(2.67mm) TO .160"(4.06mm) PC TAIL
24 - .169"(4.30mm) TO .189"(4.80mm) PC TAIL
26 - PRESS FIT CONTACT
27 - IDC

FLANGE MOUNTING OPTIONS:
2 - #4-40 THREADED HOLE
3 - #4-40 THREADED STANDOFF
6 - #4-40 THREADED HOLE WITH BOARDLOCKS
7 - #4-40 THREADED STANDOFF WITH BOARDLOCKS

PROFILE:
1 - LOW PROFILE

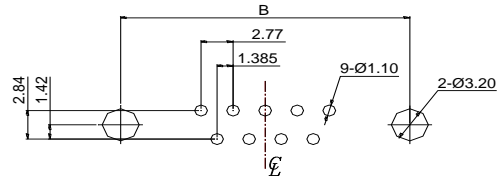
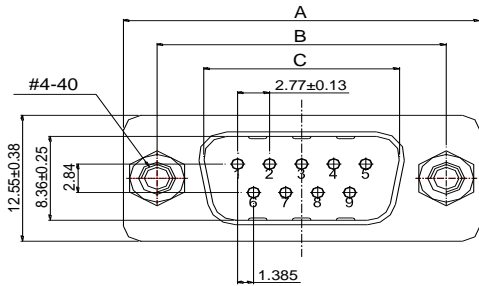
MATERIAL CODE:
0 - STANDARD



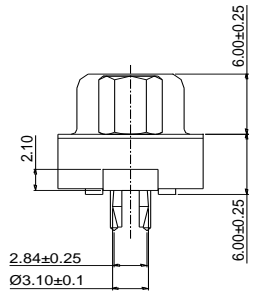
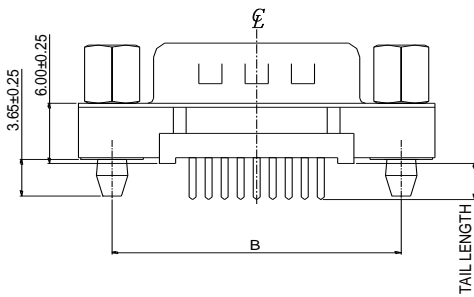
SERIES 627/628: D-SUB CONNECTOR

Plug and Receptacle, Vertical, PCB Mount, *Plastic Body*

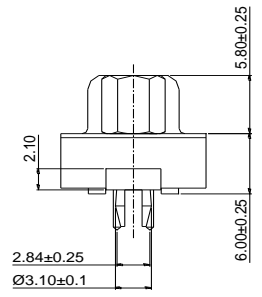
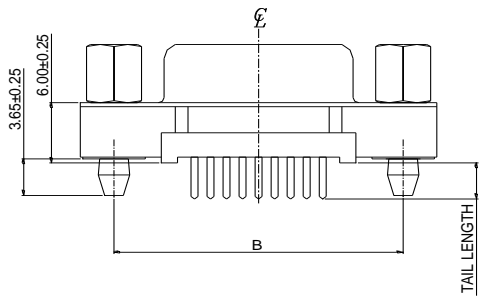
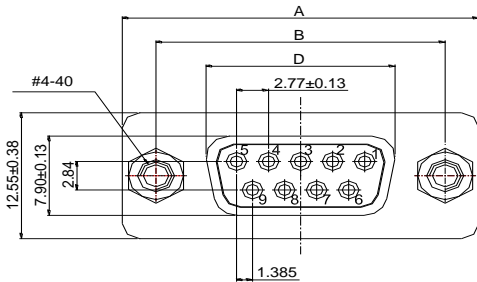
PLUG 627 SERIES



Recommended PCB Layout
(Plug and Receptacle)



RECEPTACLE 628 SERIES



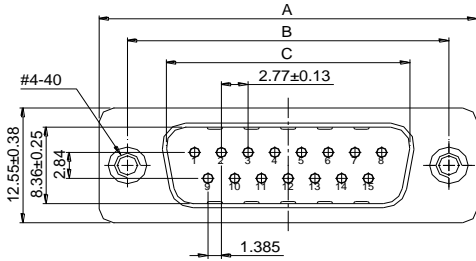
NUMBER OF CONTACTS	A±0.38		B±0.25		C±0.25 PLUG		D±0.13 RECEPTACLE	
	Inch	(mm)	Inch	(mm)	Inch	(mm)	Inch	(mm)
9	1.213	(30.81)	.984	(24.99)	.666	(16.92)	.643	(16.33)
15	1.543	(39.19)	1.312	(33.32)	.994	(25.25)	.971	(24.66)
25	2.088	(53.04)	1.852	(47.04)	1.534	(38.96)	1.534	(38.96)
37	2.729	(69.32)	2.500	(63.50)	2.182	(55.42)	2.159	(54.84)



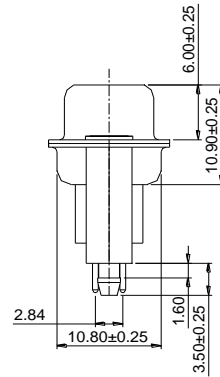
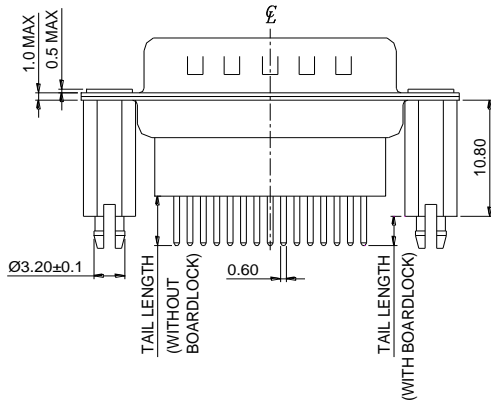
SERIES 627/628: D-SUB CONNECTOR

Plug and Receptacle, Vertical, PCB Mount, *Metal Body*

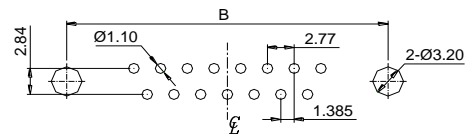
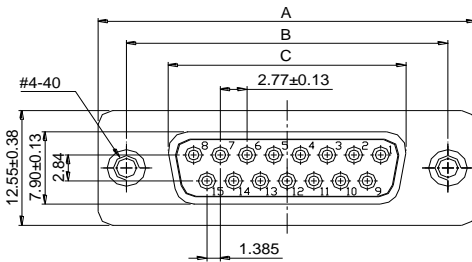
PLUG 627 SERIES



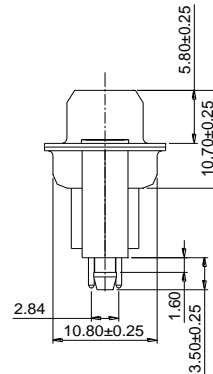
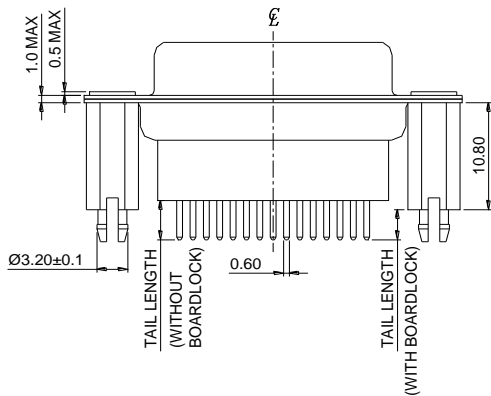
NUMBER OF CONTACTS	A±0.38		B±0.25		C±0.13 PLUG		C±0.13 RECEPTACLE	
	Inch	(mm)	Inch	(mm)	Inch	(mm)	Inch	(mm)
9	1.213	(30.81)	.984	(24.99)	.666	(16.92)	.643	(16.33)
15	1.543	(39.19)	1.312	(33.32)	.994	(25.25)	.971	(24.66)
25	2.088	(53.04)	1.852	(47.04)	1.534	(38.96)	1.511	(38.38)
37	2.729	(69.32)	2.500	(63.50)	2.182	(55.42)	2.159	(54.84)



RECEPTACLE 628 SERIES



RECOMMENDED P.C.B LAYOUT FOR PLUG AND RECEPTACLE

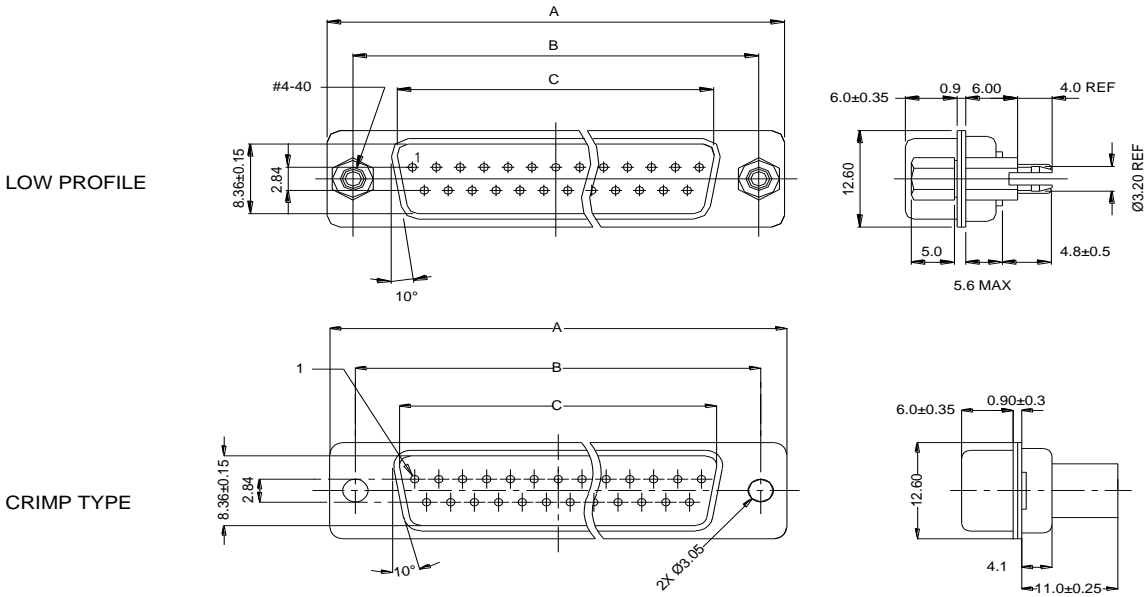




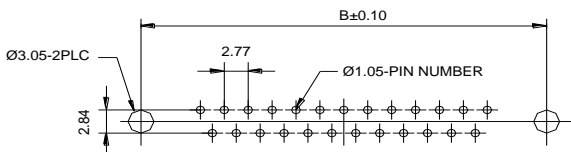
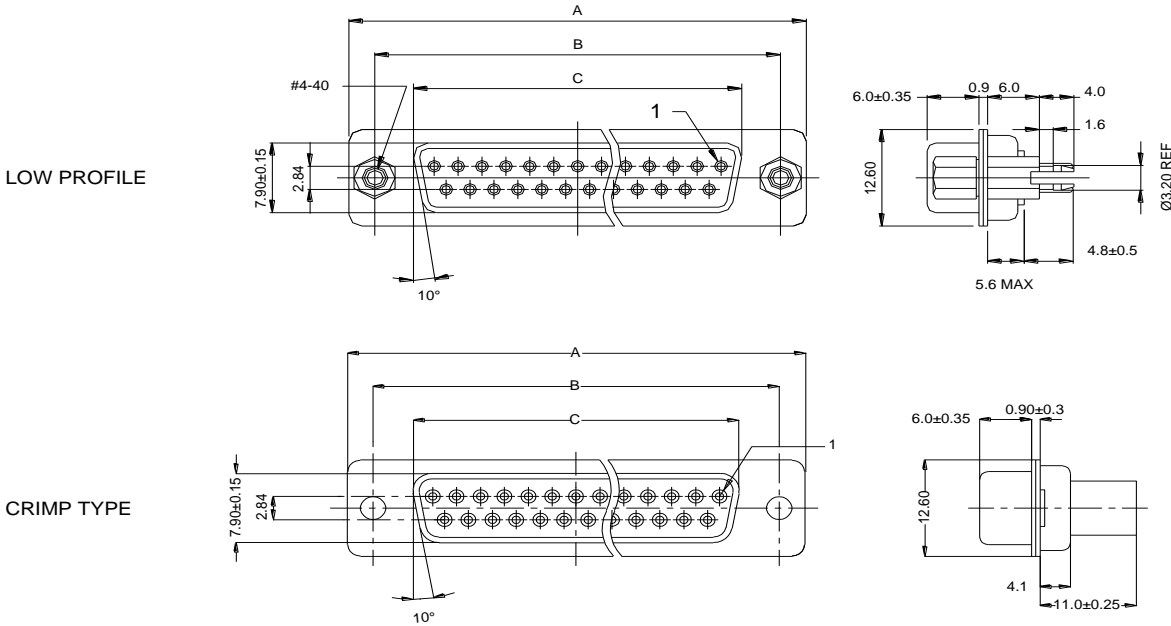
SERIES 627/628: D-SUB CONNECTOR

Plug and Receptacle, Vertical, PCB Mount, Metal Body

PLUG 627 SERIES



RECEPTACLE 628 SERIES



NUMBER OF CONTACTS	A±0.35		B±0.10		C±0.15 PLUG		C±0.15 RECEPTACLE	
	Inch	(mm)	Inch	(mm)	Inch	(mm)	Inch	(mm)
9	1.213	(30.80)	.984	(24.99)	.666	(16.92)	.642	(16.30)
15	1.541	(39.15)	1.312	(33.32)	.994	(25.25)	.970	(24.65)
25	2.087	(53.00)	1.852	(47.04)	1.534	(38.96)	1.512	(38.40)
37	2.728	(69.30)	2.500	(63.50)	2.182	(55.42)	2.157	(54.80)
50	2.638	(67.00)	2.402	(61.00)	2.079	(52.80)	2.055	(52.20)

X-ON Electronics

Largest Supplier of Electrical and Electronic Components

Click to view similar products for [Computer Cables](#) category:

Click to view products by [EDAC](#) manufacturer:

Other Similar products are found below :

[68809-0004](#) [8F36-AAA105-1.00](#) [IB63](#) [CB-716EB-RS](#) [CB-716P8P9-RS](#) [CBK-11-290K-00](#) [ACL-10550](#) [ACL-10568-2](#) [ACL-10568-5](#)
[427522400-3](#) [32102-021500-200-RS](#) [426091300-3](#) [48000023](#) [10114976-P015002LF](#) [88761-6101](#) [NT631C-CN321-EU](#) [ACL-10568NF-1](#)
[MIKROE-2092](#) [PCL-101100R-2E](#) [1700009405](#) [PS/2 Cable](#) [NT31C-CN323-EU](#) [FWAX-PK1-51](#) [PCL-10168H-1E](#) [68801-1905](#) [111068-1015](#)
[100436-1107](#) [68801-0630](#) [68801-3612](#) [68801-3618](#) [205058-1002](#) [PS2NK](#) [SATA cable](#) [96021-0000-00-0](#) [FAK-SMZSMZ 5M](#) [FAK-](#)
[SMZSMZ-3M](#) [ACC-500-200-R](#) [iW-C40-PCIe08-C1](#) [1700001531](#) [96048-0000-00-0](#) [SATA III cable 30cm, down/straight](#) [cab-Pico-ITX-](#)
[LVDS](#) [PCL-101100SB-2E](#) [AXXSTCBLQAT](#) [NT31C-KBA05](#) [PCL-101100M-2E](#) [A2U4PSWCXCXK1](#) [2 port SATA to 5 pin,L=200mm](#)
[ACL-10568NF-2](#) [C-PS2WG/5](#)