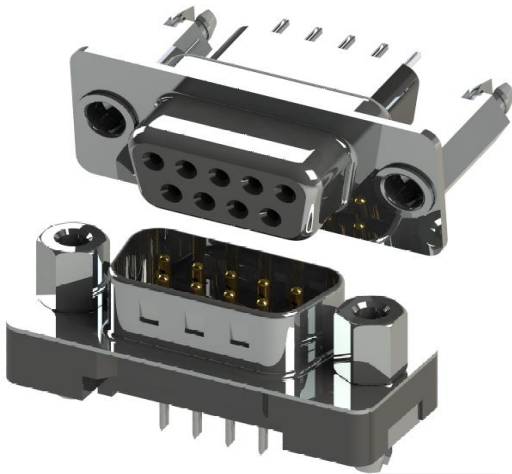




SERIES 627/628: D-SUB CONNECTOR

Plug and Receptacle, Vertical, PCB Mount, *Plastic Body*

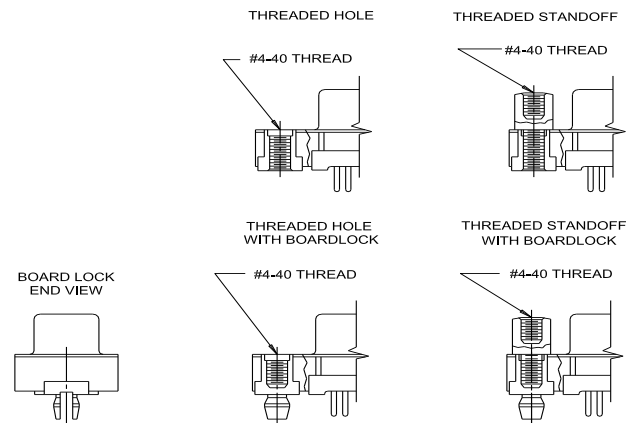


- Low Profile Only
- .109"(2.77mm) Contact Spacing x .112"(2.84mm) Row Spacing
- Plug and Receptacle in 9, 15, 25 and 37 Contact Sizes
- Pin and Socket Contact Mating Design with P.C. Tail Termination
- Metal Shell Provides EMI/RFI Shielding, Plug Shell Indents provide Grounding and Additional Mating Retention
- Grounding Feature include Boardlock for Exceptional Retention to P.C. Board
- Flange Mounting Options for Panel Mount or Connector Mating include Threaded Hole and Threaded Standoff
- D-Shaped Connector Mating Outline provides Polarization
- Design based on Requirements of MIL-C-24038, EIA RS-232 and RS-449
- IDC Type - Contact Customer Service at customerservice@edac.net
- High Temp Insulator - Contact Customer Service at customerservice@edac.net

Specifications:

| | |
|-----------------------|---|
| Insulator Material | Thermoplastic Polyester, UL 94V-0, Chemical Resistant, Color: Black |
| Contact Material | Plug (Pins): Brass Receptacle (Socket): Brass |
| Contact Plating | Selective Gold (See Ordering Code) over Nickel for the Mating Area, Tin Plating for Tail Area |
| Ferrite Specs: | 20dB MIN @30 MHz, 30dB MIN @50 MHz, and 50dB MIN @100 MHz |
| Shell Material | Nickel Plated Steel (Optional Tin Plating) |
| Current Rating | 3A Per Contact |
| Contact Resistance | 25 Milliohms MAX |
| Insulation Resistance | 5000 Megaohms MIN |
| Dielectric Voltage | 1000V AC rms at Sea Level |
| Operating Temp. | -55°C To +85°C |
| Mating Force | 16 oz (4.45N) Maximum Per Contact Position |
| Unmating Force | 1 oz (0.28N) Minimum Per Contact Position |

FLANGE MOUNTING OPTIONS



Ordering Code:

627-025-220-013

SERIES: _____
627: PLUG (PIN)
628: RECEPTACLE (SOCKET)

NO. OF CONTACTS: _____
009 - 9 CONTACTS 025 - 25 CONTACTS
015 - 15 CONTACTS 037 - 37 CONTACTS

CONTACT FINISH CODE: _____
2 - GOLD FLASH PLATING
3 - 15 MICROINCHES OF GOLD PLATING
6 - 30 MICROINCHES OF GOLD PLATING

CONTACT CODE: _____
20 - .105"(2.67mm) TO .160"(4.06mm) PC TAIL
24 - .169"(4.30mm) TO .189"(4.80mm) PC TAIL
26 - PRESS FIT CONTACT
27 - IDC

FLANGE MOUNTING OPTIONS:
2 - #4-40 THREADED HOLE
3 - #4-40 THREADED STANDOFF
6 - #4-40 THREADED HOLE WITH BOARDLOCKS
7 - #4-40 THREADED STANDOFF WITH BOARDLOCKS

PROFILE:
1 - LOW PROFILE

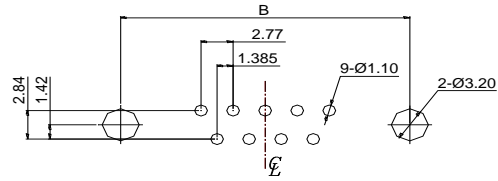
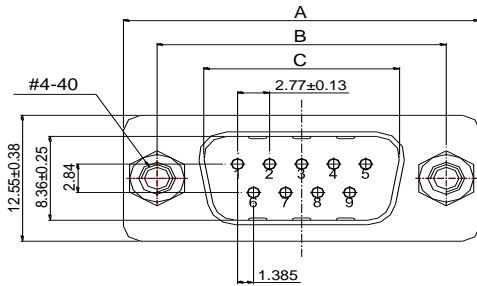
MATERIAL CODE:
0 - STANDARD



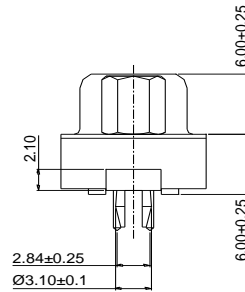
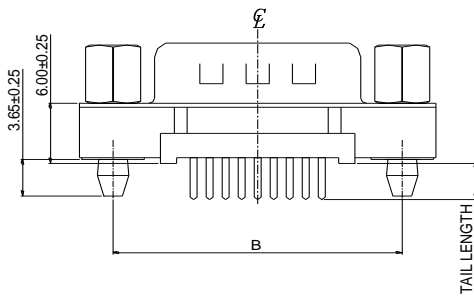
SERIES 627/628: D-SUB CONNECTOR

Plug and Receptacle, Vertical, PCB Mount, *Plastic Body*

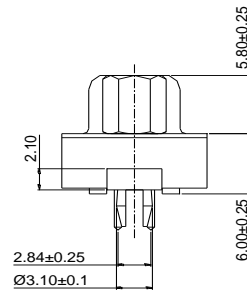
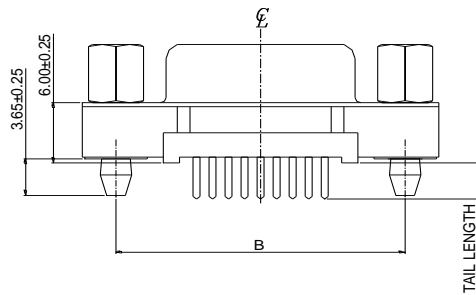
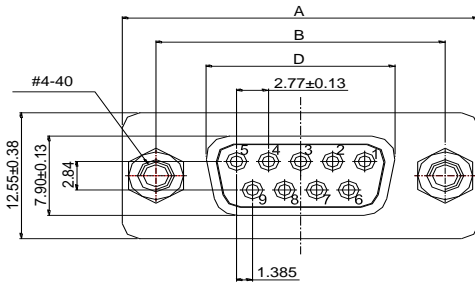
PLUG 627 SERIES



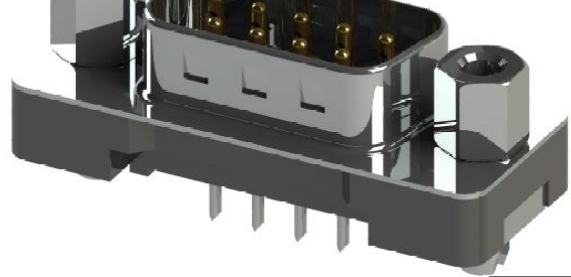
Recommended PCB Layout
(Plug and Receptacle)



RECEPTACLE 628 SERIES



| NUMBER OF CONTACTS | A±0.38 | | B±0.25 | | C±0.25 PLUG | | D±0.13 RECEPTACLE | |
|--------------------|--------|---------|--------|---------|-------------|---------|-------------------|---------|
| | Inch | (mm) | Inch | (mm) | Inch | (mm) | Inch | (mm) |
| 9 | 1.213 | (30.81) | .984 | (24.99) | .666 | (16.92) | .643 | (16.33) |
| 15 | 1.543 | (39.19) | 1.312 | (33.32) | .994 | (25.25) | .971 | (24.66) |
| 25 | 2.088 | (53.04) | 1.852 | (47.04) | 1.534 | (38.96) | 1.534 | (38.96) |
| 37 | 2.729 | (69.32) | 2.500 | (63.50) | 2.182 | (55.42) | 2.159 | (54.84) |

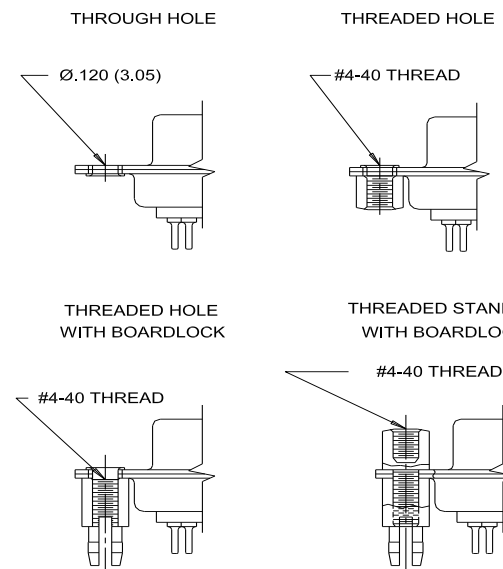


- Board**
- **Mounting Options for Panel Mount or Connector Mount**
 - **Through Hole, Threaded Hole and Threaded Standoff**
 - **D-Shaped Connector Mating Outline provides Polarization**
 - **Design based on Requirements of MIL-C-24038, EIA-310**
 - **IDC Type - Contact Customer Service at customerservice@rfsh.com**

Specifications:

| | |
|-----------------------|--|
| Insulator Material | Thermoplastic Polyester, UL 94V-0, Chemical Resistant, Color: Black |
| Contact Material | Plug (Pins): Brass Receptacle (Socket): Brass |
| Contact Plating | Selective Gold (See Ordering Code) over Nickel for the Mating Area, Tin Plating for Tail Area |
| Ferrite Specs: | 20dB MIN @30 MHz, 30dB MIN @50 MHz, and 50dB MIN @100 MHz |
| Shell Material | Nickel Plated Steel (Optional Tin Plating) |
| Current Rating | 3A - 5A Per Contact |
| Contact Resistance | 25 Milliohms MAX |
| Insulation Resistance | 1000 Megaohms MIN |
| Dielectric Voltage | 1000V AC rms at Sea Level |
| Operating Temp. | -55°C To +85°C |
| Mating Force | 16 oz (4.45N) Maximum Per Contact Position |
| Unmating Force | 1 oz (0.28N) Minimum Per Contact Position |

FLANGE MOUNTING OPTIONS:



Ordering Code:

627-025-220-043

SERIES: _____

627: PLUG (PIN)
628: RECEPTACLE (SOCKET)

NO. OF CONTACTS: _____

009 - 9 CONTACTS 025 - 25 CONTACTS
015 - 15 CONTACTS 037 - 37 CONTACTS
050 - 50 CONTACTS (LOW PROFILE ONLY)

CONTACT FINISH CODE: _____

2 - GOLD FLASH PLATING
3 - 15 MICROINCHES OF GOLD PLATING
6 - 30 MICROINCHES OF GOLD PLATING

TERMINATION: _____

010 - CRIMP AND LOAD (CABLE ASSEMBLY)

CONTACT CODE: _____

20 - LOW PROFILE:
0.189" ± 0.020" (4.80 ± 0.50mm) PC TAIL (PLUG ONLY)
0.181" ± 0.020" (4.60 ± 0.50mm) PC TAIL (RECEPTACLE ONLY)

21 - HIGH PROFILE:
0.122" ± 0.015" (3.10 ± 0.38mm) PC TAIL (PLUG ONLY)
0.165" ± 0.015" (4.20 ± 0.38mm) PC TAIL (RECEPTACLE ONLY)

22 - SOLDER CUP
26 - PRESS FIT CONTACT
28 - 0.110" (2.80mm) PC TAIL WITH FERRITE FILTER

FLANGE MOUNTING OPTIONS:

0 - NO CONTACTS (CRIMP AND LOAD ONLY)
1 - \emptyset .120" (\emptyset 3.05MM) THROUGH HOLE
2 - #4-40 THREADED HOLE
3 - #4-40 THREADED STANDOFF
6 - #4-40 THREADED HOLE WITH BOARDLOCKS
7 - #4-40 THREADED STANDOFF WITH BOARDLOCKS
8 - #4-40 THREADED FIXED STANDOFF

GROUNDING FEATURE: _____

4 - LOW PROFILE 0 - NO HARDWARE
5 - HIGH PROFILE 1 - .098" (2.49mm) CLINCH
2 - .236" (6.00mm) CLINCH
3 - .236" (6.00mm) CLINCH

MATERIAL CODE: _____

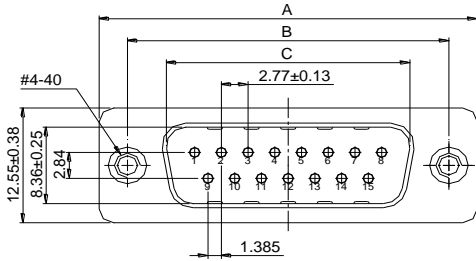
0 - STANDARD 2 - TIN PLATED SHELL
5 - HIGH TEMP INSULATOR 3 - NICKEL PLATED SHELL



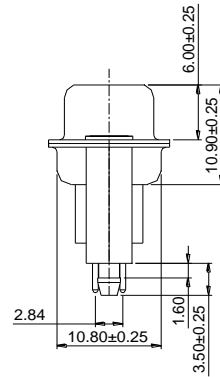
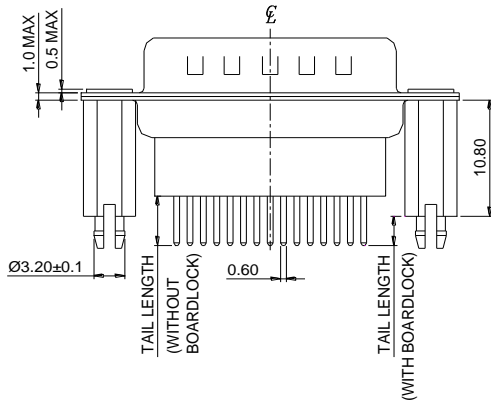
SERIES 627/628: D-SUB CONNECTOR

Plug and Receptacle, Vertical, PCB Mount, *Metal Body*

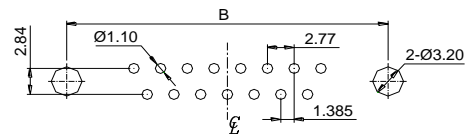
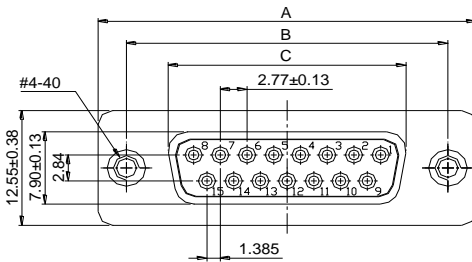
PLUG 627 SERIES



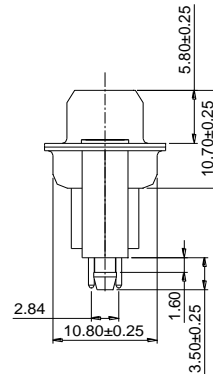
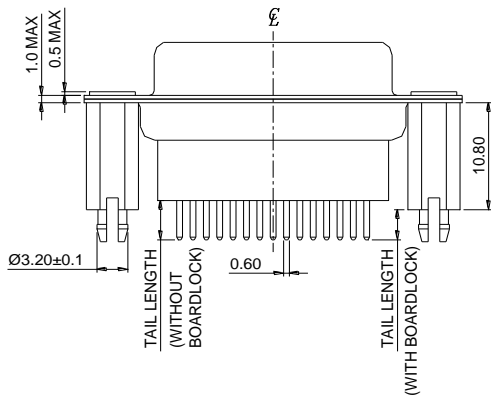
| NUMBER OF CONTACTS | A±0.38 | | B±0.25 | | C±0.13 PLUG | | C±0.13 RECEPTACLE | |
|--------------------|--------|---------|--------|---------|-------------|---------|-------------------|---------|
| | Inch | (mm) | Inch | (mm) | Inch | (mm) | Inch | (mm) |
| 9 | 1.213 | (30.81) | .984 | (24.99) | .666 | (16.92) | .643 | (16.33) |
| 15 | 1.543 | (39.19) | 1.312 | (33.32) | .994 | (25.25) | .971 | (24.66) |
| 25 | 2.088 | (53.04) | 1.852 | (47.04) | 1.534 | (38.96) | 1.511 | (38.38) |
| 37 | 2.729 | (69.32) | 2.500 | (63.50) | 2.182 | (55.42) | 2.159 | (54.84) |



RECEPTACLE 628 SERIES



RECOMMENDED P.C.B LAYOUT FOR PLUG AND RECEPTACLE

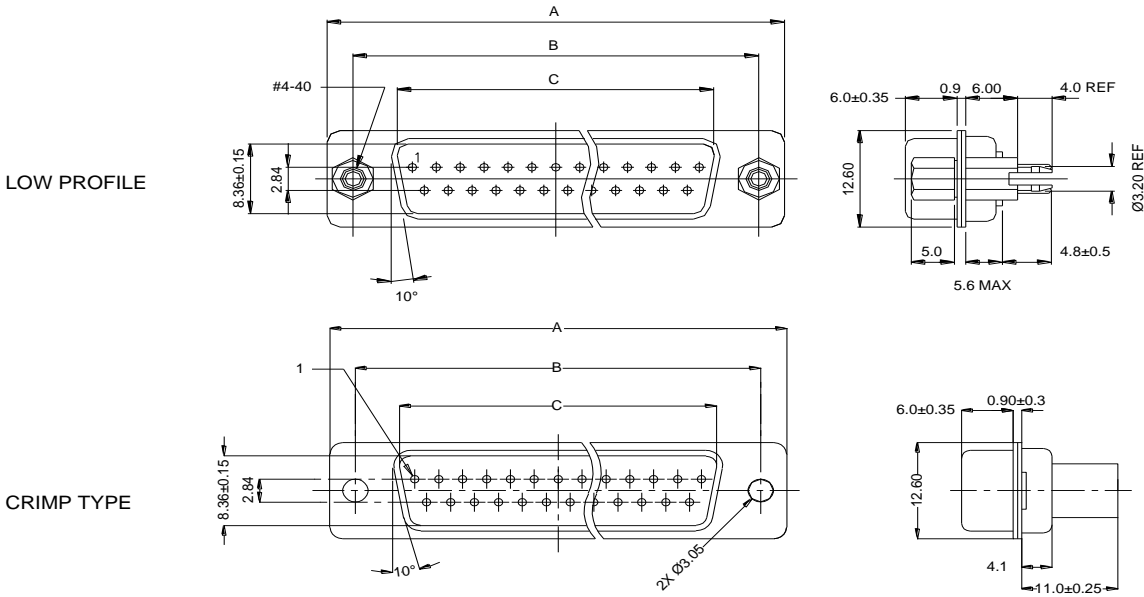




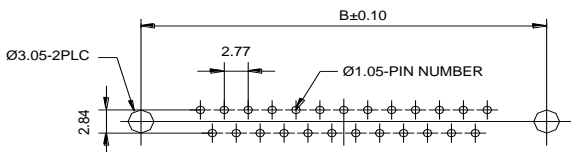
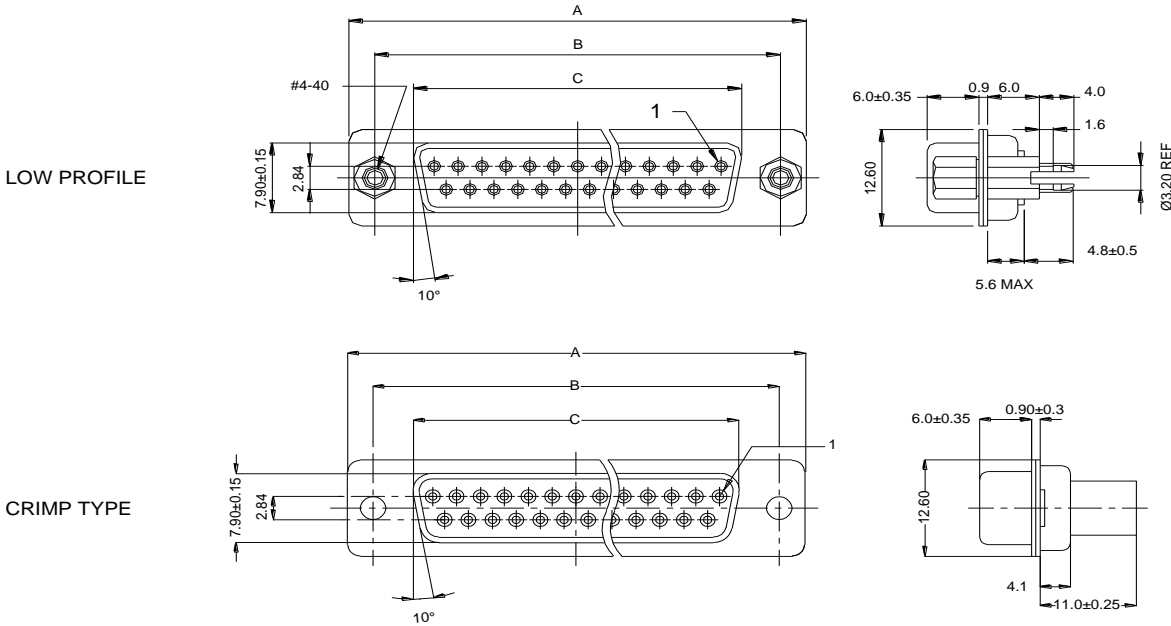
SERIES 627/628: D-SUB CONNECTOR

Plug and Receptacle, Vertical, PCB Mount, Metal Body

PLUG 627 SERIES



RECEPTACLE 628 SERIES



Recommended PCB Layout
(Plug and Receptacle)

| NUMBER OF CONTACTS | A±0.35 | | B±0.10 | | C±0.15 PLUG | | C±0.15 RECEPTACLE | |
|--------------------|--------|---------|--------|---------|-------------|---------|-------------------|---------|
| | Inch | (mm) | Inch | (mm) | Inch | (mm) | Inch | (mm) |
| 9 | 1.213 | (30.80) | .984 | (24.99) | .666 | (16.92) | .642 | (16.30) |
| 15 | 1.541 | (39.15) | 1.312 | (33.32) | .994 | (25.25) | .970 | (24.65) |
| 25 | 2.087 | (53.00) | 1.852 | (47.04) | 1.534 | (38.96) | 1.512 | (38.40) |
| 37 | 2.728 | (69.30) | 2.500 | (63.50) | 2.182 | (55.42) | 2.157 | (54.80) |
| 50 | 2.638 | (67.00) | 2.402 | (61.00) | 2.079 | (52.80) | 2.055 | (52.20) |

X-ON Electronics

Largest Supplier of Electrical and Electronic Components

Click to view similar products for [USB Cables / IEEE 1394 Cables](#) category:

Click to view products by [EDAC](#) manufacturer:

Other Similar products are found below :

[68768-0173](#) [FNY-W6003-01](#) [88764-0800](#) [148700-1](#) [17-200621](#) [17-250051P](#) [954](#) [17-200261](#) [AC102012-1](#) [AC102012-2](#) [FTP-629Y601](#) [45-1345-15](#) [45-1358-15](#) [45-1363-15](#) [IP-USB1\(C10\)S-RW](#) [CABLE/RTP/USB/DT](#) [45-1351-15](#) [45-1357-15](#) [45-1433-1](#) [687680278](#)
[USBFTVX2SA2N03A](#) [USBFTV2SA2N03A](#) [USBFTV2SA2N05A](#) [MDM9PH004B](#) [MDM9PH004P](#) [FTP-629Y401](#) [FTP-628Y302](#) [FTP-628Y402](#) [CSMNB9MF-5](#) [FNY-W6022](#) [UA-30AMF-SD7B03](#) [UA-30AMFM-SL7B03](#) [USBAPSCC7202A](#) [UES-1001A160](#) [UES-1003A160](#)
[USBFTVX7SA2N20A](#) [USBFTV2PEMSA2N10A](#) [FTP-629Y602](#) [USBCAMCM100](#) [USB A/F*2 to 2.54 2*5P-SH L=400mm](#) [68784-0075](#)
[USB-29](#) [19800-010500-200-RS](#) [103-1092-BL-F0050](#) [103-1020-BL-00100](#) [103-1092-BL-F0200](#) [103-1092-BL-F0100](#) [105-1092-BL-00300](#)
[105-1092-BL-00200](#) [105-1031-BL-00200](#)