

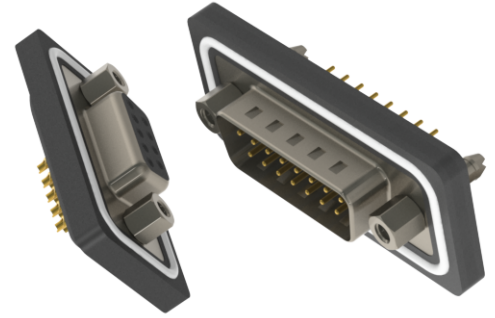
# 627W/628W SERIES



## Waterproof D-Sub Connectors: Vertical

### Features:

- 0.109"(2.77mm) contact spacing x 0.112"(2.82mm) row spacing
- Plug and receptacle in 9, 15, 25 or 37 contact sizes
- Pin and socket contact mating design with P.C. tail termination or solder cup termination
- Plug shell indents provide grounding and additional mating retention
- Grounding features include two prong boardlock for exceptional retention to P.C. board
- Mounting options for panel mount or connector mating include threaded inserts or threaded standoffs
- D-shaped connector mating outline provides polarization
- Degree of protection: IP67 as per IEC60529



### Specifications:

Insulator Material	PBT Thermoplastic with 30% Glass Filled, UL 94V-0 Rated, Black color
Contact Material	Pins and Sockets: Copper Alloy
Contact Plating	Gold Plating over Nickel underplating
Shell Material	Nickel Plated Steel
Epoxy Sealant	Epoxy
O-Ring	Silicone
Current Rating	5 amps
Contact Resistance	10 Milliohms maximum
Dielectric Withstanding Voltage	5000 megaohms minimum
Insulation Resistance	1000 V AC rms at Sea Level
Operating Temperature	-25°C To +85°C

### Ordering Code:

## 627-W09-220-012

**SERIES:**  
627 - PLUG (PIN)  
628 - RECEPTACLE (SOCKET)

**EDAC CODE:**  
W - WATERPROOF

**NO. OF CONTACTS:**  
09 - 9 CONTACTS  
15 - 15 CONTACTS  
25 - 25 CONTACTS  
37 - 37 CONTACTS

**CONTACT PLATING:**  
2 - GOLD FLASH PLATING  
3 - 15µ" OF GOLD PLATING  
6 - 30µ" OF GOLD PLATING

**MOUNTING OPTION:**  
2 - #4-40 UNC THREADED HOLE  
3 - RIVETED #4-40 UNC BOARDLOCKS  
(ONLY AVAILABLE WITH CONTACT CODE 20)

**NOTE:** ALL CONNECTORS ARE SHIPPED WITH  
#4-40 UNC HEXAGON SCREWS  
(PACKED SEPARATELY)

**SHELL OPTIONS:**  
1 - NICKEL PLATED

**INSULATOR COLOR:**  
0 - BLACK

**CONTACT CODE:**  
20 - PC TAIL (LENGTH = 3.50mm)  
21 - PC TAIL (LENGTH = 14.95mm)  
22 - SOLDER CUP TERMINATION

## X-ON Electronics

Largest Supplier of Electrical and Electronic Components

*Click to view similar products for [D-Sub Standard Connectors](#) category:*

*Click to view products by [EDAC](#) manufacturer:*

Other Similar products are found below :

[56F706-005-LI](#) [56F711-015](#) [LV242999-142T12](#) [015-0341-000](#) [015-0372-005](#) [015-0372-008](#) [015-8755-001](#) [020419-0104](#) [012-0467-000](#)  
[012-9507-034](#) [012-9507-114](#) [020745-0008](#) [609-25P](#) [CT2-18-11PCAU](#) [CT6-10SL-3SC](#) [CT6-10SL-4SC](#) [CT6-14S-2SC](#) [CT6E14SA7SC](#)  
[CT6M20-19SS](#) [CT6N10SL-4SSA34](#) [M83513/01-FC](#) [M83723/76W24619 L/C](#) [M85049/48-3-2F](#) [6STD09PCM99B70X](#) [6STD09SCM99B30X](#)  
[6STD09SCT99S40X](#) [6STD15PCT99S40X](#) [6STD15SCT99S40X](#) [6STF09PCM05B70X](#) [7-135760-9](#) [MC11E-10-6SN](#) [747552-3](#) [MD1-21PS](#)  
[MDM-15SCBRM7-F222](#) [MDM96517-699](#) [MDM96521-744](#) [MDVB1-21SL1](#) [MIK0-1-7SH003](#) [MIKQ6-7SH076](#) [MIKQ7-7PH077](#) [MIKQ7-](#)  
[7PH11](#) [MIKQ7-7PH32](#) [MKJ4A1F14-55S](#) [8-135760-3](#) [8STD09PCM99B30X](#) [PG-KV/PV-16-GROM-SEALING](#) [GDA15P](#) [GDAY15PB](#) [980-](#)  
[0000-170](#) [980-0000-171](#)