

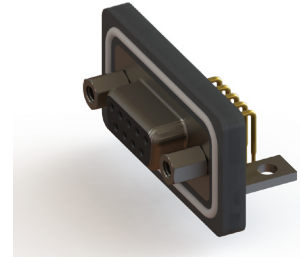
629W/630W SERIES



Waterproof D-Sub Connectors: Right Angle

Features:

- 0.109" (2.77mm) contact spacing x 0.112" (2.82mm) row spacing
- Plug and receptacle in 9, 15, or 25 contact sizes
- Pin and socket contact mating design with right angle P.C. tail termination.
- Plug shell indents provide grounding and additional mating retention
- Grounding features include two prong boardlock for exceptional retention to P.C. board
- Mounting options for panel mount or connector mating include threaded inserts or threaded standoffs
- D-shaped connector mating outline provides polarization
- Degree of protection: IP67 as per IEC60529



Specifications:

Insulator Material	PBT Thermoplastic with 30% Glass Filled, UL 94V-0 Rated, Black color
Contact Material	Pins and Sockets: Copper Alloy
Contact Plating	Gold Plating over Nickel underplating
Shell Material	Nickel Plated Steel
Epoxy Sealant	Epoxy
O-Ring	Silicone
Current Rating	5 amps
Contact Resistance	10 Milliohms maximum
Dielectric Withstanding Voltage	5000 megaohms minimum
Insulation Resistance	1000 V AC rms at Sea Level
Operating Temperature	-25°C To +85°C

Ordering Code:

629-W09-240-015

SERIES:
 PLUG, 10.3 [0.406], FOOTPRINT . . . 629
 RECEPTACLE, 10.3 [0.406] FOOTPRINT . . . 630

EDAC CODE:
 WATERPROOF . . . W

NO. OF CONTACTS:
 9 CONTACT PINS . . . 09
 15 CONTACT PINS . . . 15
 25 CONTACT PINS . . . 25

CONTACT PLATING:
 GOLD FLASH OVER NICKEL . . . 2
 15µ" GOLD OVER NICKEL . . . 3
 30µ" GOLD OVER NICKEL . . . 6

MOUNTING OPTION:
 2 . . . #4-40 UNC THREADED HOLE
 5 . . . BRACKET #4-40 UNC WITHOUT BOARDLOCKS

NOTE: ALL CONNECTORS ARE SHIPPED WITH
 #4-40 UNC HEXAGON SCREWS
 (PACKED SEPARATELY)

SHELL OPTIONS:
 1 . . . NICKEL PLATED

INSULATOR COLOR:
 0 . . . BLACK

CONTACT CODE:
 40 . . . RIGHT ANGLE TAIL,
 10.3 [0.405] FOOTPRINT (9.4 NODE)

X-ON Electronics

Largest Supplier of Electrical and Electronic Components

Click to view similar products for [D-Sub Standard Connectors](#) category:

Click to view products by [EDAC](#) manufacturer:

Other Similar products are found below :

[56F706-005-LI](#) [56F711-015](#) [LV242999-142T12](#) [015-0341-000](#) [015-0372-005](#) [015-0372-008](#) [015-8755-001](#) [020419-0104](#) [012-0467-000](#)
[012-9507-034](#) [012-9507-114](#) [020745-0008](#) [609-25P](#) [CT2-18-11PCAU](#) [CT6-10SL-3SC](#) [CT6-10SL-4SC](#) [CT6-14S-2SC](#) [CT6E14SA7SC](#)
[CT6M20-19SS](#) [CT6N10SL-4SSA34](#) [M83513/01-FC](#) [M83723/76W24619 L/C](#) [M85049/48-3-2F](#) [6STD09PCM99B70X](#) [6STD09SCM99B30X](#)
[6STD09SCT99S40X](#) [6STD15PCT99S40X](#) [6STD15SCT99S40X](#) [6STF09PCM05B70X](#) [7-135760-9](#) [MC11E-10-6SN](#) [747552-3](#) [MD1-21PS](#)
[MDM-15SCBRM7-F222](#) [MDM96517-699](#) [MDM96521-744](#) [MDVB1-21SL1](#) [MIK0-1-7SH003](#) [MIKQ6-7SH076](#) [MIKQ7-7PH077](#) [MIKQ7-](#)
[7PH11](#) [MIKQ7-7PH32](#) [MKJ4A1F14-55S](#) [8-135760-3](#) [8STD09PCM99B30X](#) [PG-KV/PV-16-GROM-SEALING](#) [GDA15P](#) [GDAY15PB](#) [980-](#)
[0000-170](#) [980-0000-171](#)