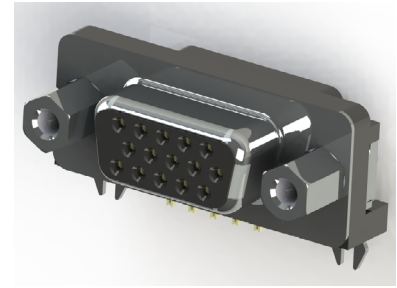


## D-Sub Connectors: Right Angle, High Density, 0.121" (3.08mm) Footprint

### Features:

- High density three contact rows with 0.121"(3.08mm) footprint, right angle bend
- 0.090"(2.29mm) contact spacing X 0.078"(1.98mm) row spacing
- Receptacle in 15 contact size
- Pin and socket contact mating design with P.C. tail termination
- Metal shell provides EMI/RFI shielding
- Board mounting features include two prong boardlock for exceptional retention to P.C. board
- Flange mounting options for panel mount or connector mating include through hole, threaded hole and threaded standoffs
- D-shaped connector mating outline provides polarization
- Design based on requirements of MIL-C-24038, EIA RS-232 and RS-44



### Specifications:

Insulator Material	Thermoplastic Polyester, UL 94V-0, Chemical Resistant, Color: Black
Contact Material	Brass
Contact Plating	Selective Gold (See Ordering Code) over Nickel for the Mating Area, Tin Plating for Tail Area
Shell Material	Nickel Plated Steel
Current Rating	3 amps
Contact Resistance	25 Milliohms maximum
Insulation Resistance	5000 megaohms minimum
Dielectric Withstanding Voltage	1000 V AC rms at Sea Level
Operating Temperature	-55°C To +85°C (upto +125°C for high temp)
Insertion Force	211.6 oz (58.8 N) maximum
Withdrawal Force	42.3 oz (11.8 N) minimum

### Ordering Code:

**632-015-266-033**

SERIES:  
632: RECEPTACLE (SOCKET)

NO. OF CONTACTS:  
015 - 15 CONTACTS

CONTACT FINISH CODE:  
2 - GOLD FLASH PLATING  
3 - 15 MICROINCHES OF GOLD PLATING  
6 - 30 MICROINCHES OF GOLD PLATING

CONTACT CODE:  
66 - .121" (3.08MM) FOOTPRINT CONTACT  
74 - 9TH PIN CONTACT RECESSED, BLUE INSULATOR

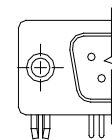
FLANGE MOUNTING OPTIONS:  
1 - Ø.120" (Ø3.05MM) THROUGH HOLE  
2 - #4-40 THREADED HOLE  
3 - #4-40 THREADED STANDOFF  
5 - M3 THREADED HOLE

BOARD MOUNTING FEATURE:  
3 - TWO PRONG BOARDLOCKS

MATERIAL CODE:  
0 - STANDARD  
5 - HIGH TEMP INSULATOR

### FLANGE MOUNTING OPTIONS

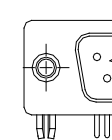
THROUGH HOLE



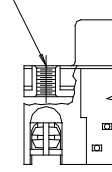
3.05 DIA. THROUGH HOLE



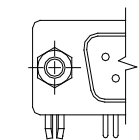
THREADED HOLE



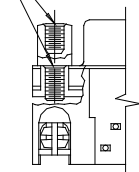
#4-40 OR M3 THREAD



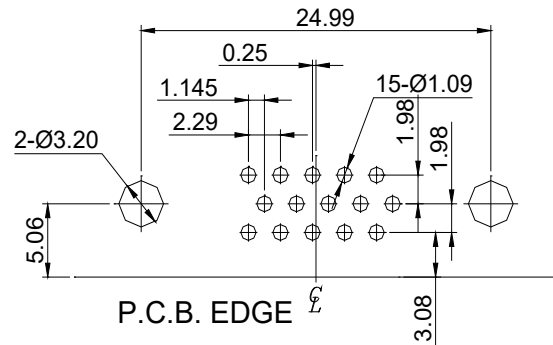
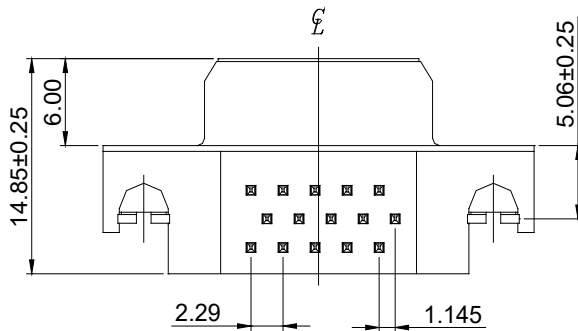
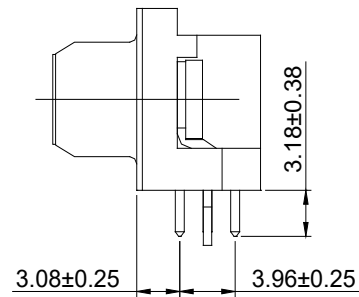
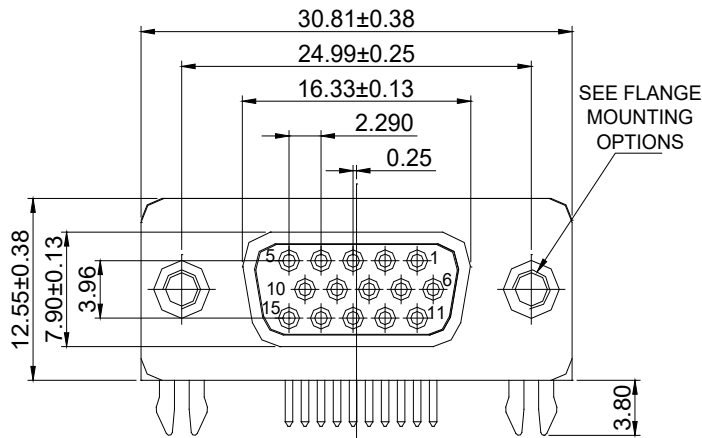
THREADED STANDOFF



#4-40 THREAD



### RECEPTACLE 632 SERIES



### RECOMMENDED P.C.B. LAYOUT

## X-ON Electronics

Largest Supplier of Electrical and Electronic Components

*Click to view similar products for [D-Sub Standard Connectors](#) category:*

*Click to view products by [EDAC](#) manufacturer:*

Other Similar products are found below :

[56F706-005-LI](#) [56F711-015](#) [LV242999-142T12](#) [015-0341-000](#) [015-0372-005](#) [015-0372-008](#) [015-8755-001](#) [020419-0104](#) [012-0467-000](#)  
[012-0515-000](#) [012-9507-034](#) [012-9507-114](#) [020745-0008](#) [609-25P](#) [CT2-18-11PCAU](#) [CT6-10SL-3SC](#) [CT6-10SL-4SC](#) [CT6-14S-2SC](#)  
[CT6E14SA7SC](#) [CT6M20-19SS](#) [CT6N10SL-4SSA34](#) [M83513/01-FC](#) [M83723/76W24619 L/C](#) [M85049/48-3-2F](#) [6STD09PCM99B70X](#)  
[6STD09SCM99B30X](#) [6STD09SCT99S40X](#) [6STD15PCT99S40X](#) [6STD15SCT99S40X](#) [6STF09PCM05B70X](#) [7-135760-9](#) [MC11E-10-6SN](#)  
[747552-3](#) [MD1-21PS](#) [MDM-15SCBRM7-F222](#) [MDM96517-699](#) [MDM96521-744](#) [MDVB1-21SL1](#) [MIK0-1-7SH003](#) [MIKQ6-7SH076](#)  
[MIKQ7-7PH077](#) [MIKQ7-7PH11](#) [MIKQ7-7PH32](#) [MKJ4A1F14-55S](#) [8-135760-3](#) [8STD09PCM99B30X](#) [PG-KV/PV-16-GROM-SEALING](#)  
[GDA15P](#) [GDAY15PB](#) [980-0000-170](#)