

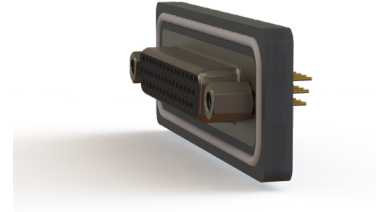
637W/638W SERIES



Waterproof HD D-Sub Connectors: Straight

Features:

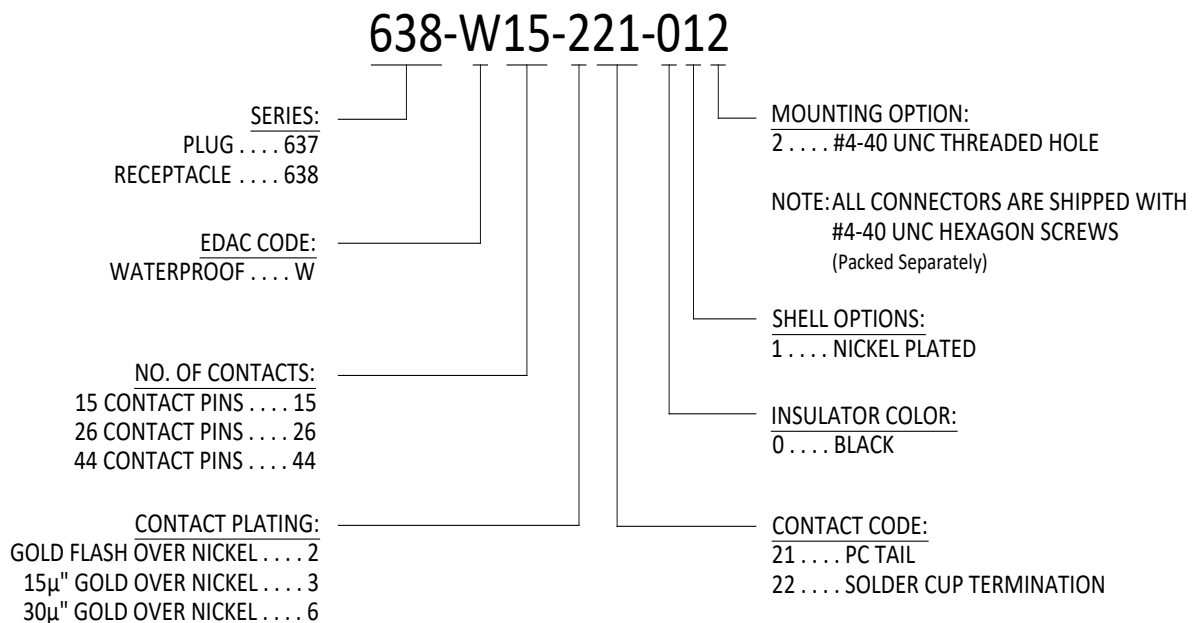
- High density waterproof D-Sub
- 0.090" (2.29mm) contact spacing x 0.078" (1.98mm) row spacing
- Plug and receptacle in 15, 26 or 44 contact sizes
- Pin and socket contact mating design with straight P.C. tail or solder cup termination
- Plug shell indents provide grounding and additional mating retention
- Mounting options for panel mount or connector mating include threaded inserts or threaded standoffs
- D-shaped connector mating outline provides polarization
- Degree of protection: IP67 as per IEC60529



Specifications:

Insulator Material	PBT Thermoplastic with 30% Glass Filled, UL 94V-0 Rated, Black color
Contact Material	Pins and Sockets: Copper Alloy
Contact Plating	Gold Plating over Nickel underplating
Shell Material	Nickel Plated Steel
Epoxy Sealant	Epoxy
O-Ring	Silicone
Current Rating	3 amps Per Contact
Contact Resistance	10 Milliohms maximum
Dielectric Withstanding Voltage	5000 megaohms minimum
Insulation Resistance	1000 V AC rms at Sea Level
Operating Temperature	-25°C To +85°C

Ordering Code:



X-ON Electronics

Largest Supplier of Electrical and Electronic Components

Click to view similar products for [D-Sub High Density Connectors](#) category:

Click to view products by [EDAC](#) manufacturer:

Other Similar products are found below :

[97-3250-11](#) [163A16809X](#) [163A17089X](#) [164A17199X](#) [K86X-AD-26S](#) [242A25680X](#) [L717HDB44POL2R210](#) [L717HDEH15POL2](#)
[L777HDE15P](#) [L77HDE15SC309](#) [163A16759X](#) [163A16839X](#) [163A16989X](#) [163A17079X](#) [164A17329X](#) [164A18219X](#) [241A16440X](#)
[241A16550X](#) [241A16680X](#) [241A20810X](#) [241A25740X](#) [CT25-44P](#) [MDBE15PE766](#) [L177HDE15SOL2RM23](#) [L177HRC62S](#)
[L177HRC62SVFM](#) [L177HRCG62S](#) [L717HDEG15POL2RM5](#) [L77HDA26SVF](#) [L77HDE15SD1CO](#) [L77HDEH15SOL2RM832](#) [DAMA-15S-](#)
[WS](#) [443895-3](#) [106698-1](#) [280-012K2C](#) [L177HRB44S](#) [164A17039X](#) [09562004701510](#) [241A17960X](#) [164A18269X](#) [280-019S1S9MEN](#)
[L777HDEG15P](#) [280-018P3S25MEGN](#) [206504-2](#) [2057140-1](#) [C115370-6002](#) [DFMA104SNMBFR172FR022](#) [HDC9F200E2S](#)
[L717HDAG26POL2RM8](#) [241A28180X](#)