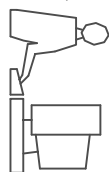


THIS IS A C.A.D. GENERATED DRAWING
DO NOT MAKE MANUAL REVISIONS TO MASTER.

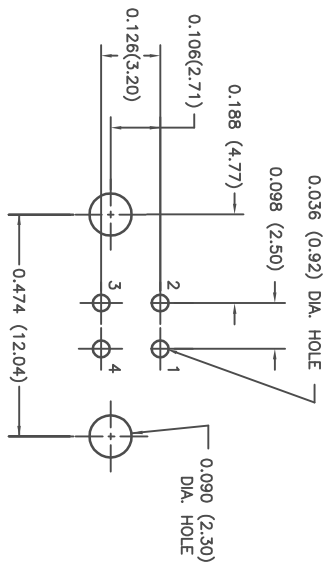


TOLERANCE:
IN MM
.XX ±0.01
.XXX ±0.006
.XXXX ±0.002
:X ±0.25
:XX ±0.15
:XXX ±0.05

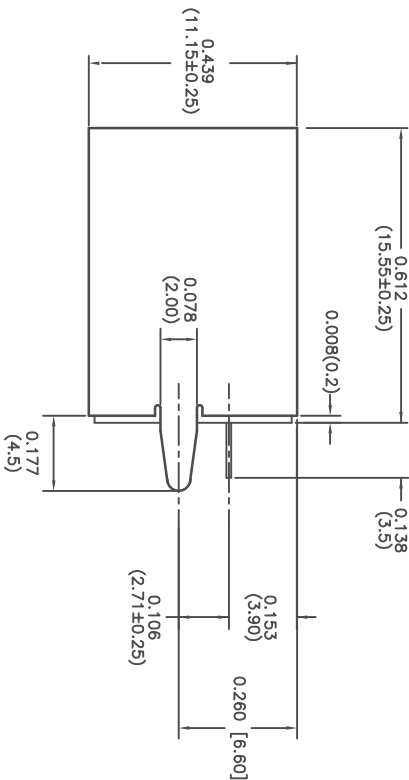
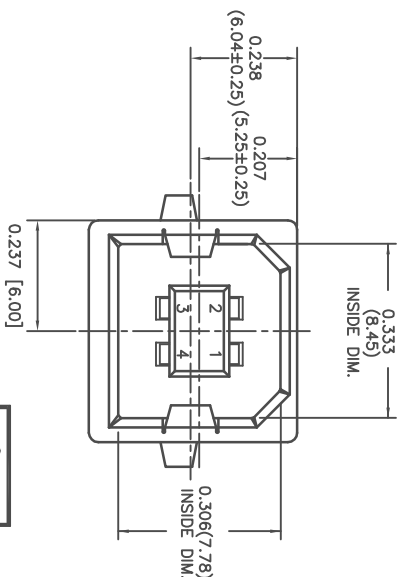
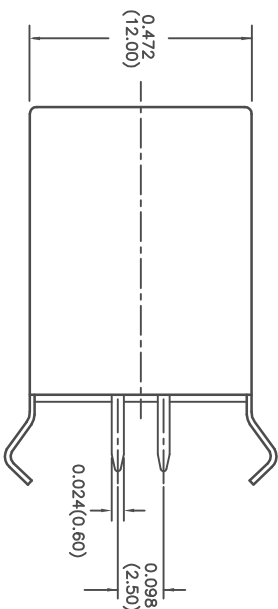
ISSUE NUMBER
DIM: 0.612(15.55) WAS 0.63(16.0)
0.439(11.15) WAS 0.445(11.30) ⑥
0.153(3.90) WAS 0.146(3.70)
ADD DIM: 0.238(6.04), 0.207(5.25)
0.177(4.5), 0.078(2.0), 0.024(0.60)
R.STA.MONICA JUN.10/2010

0.333(8.45) AND 0.306(7.78) WAS
0.372(9.45) AND 0.331(8.40) ⑦
F.BRIONES OCT.08/10

ADD OPERATING TEMPERATURE
R.STA.MONICA APR.10/2014 ⑧



PC BOARD MOUNTING DIMENSIONS



THIS SERIES FULLY CONFORMS TO THE
EUROPEAN UNION DIRECTIVES
2011/65/EU FOR ROHS COMPLIANCY.

- CONTACT CODE _____
- SPECIFICATIONS:
1. CONTACT RESISTANCE:
30 MOHM MAX
2. INSULATION RESISTANCE:
1000OHM MIN AT 500VDC
3. RATED VOLTAGE AND CURRENT:
1.5A @ 250VAC MIN.
4. DIELECTRIC WITHSTANDING VOLTAGE:
500VAC (RMS) FOR 1MIN
5. INSERTION FORCE: 35N MIN
6. EXTRACTION FORCE: 10N MIN
OPERATING TEMPERATURE: -55°C TO +85°C

USB CONNECTOR B TYPE, VERTICAL, SINGLE DECK

ACAD REFERENCE NO. 690-004-260-023

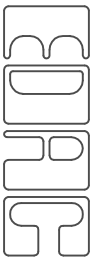
DRAWN: J.CHOW DATE: OCT 16/98

CHECKED: DATE:

SCALE: (IN C.A.D. 1:1) SHEET 1 OF 1

DRAWING NUMBER ISSUE

690-004-260-023 8



EDAC INC
TORONTO, ONTARIO
CANADA

YOUR CONNECTION TO QUALITY & SERVICE

THESE DRAWINGS AND SPECIFICATIONS
ARE THE PROPERTY OF EDAC INC. AND
SHALL NOT BE REPRODUCED, OR COPIED
OR USED AS THE BASIS FOR THE
MANUFACTURE OR SALE OF APPARATUS
WITHOUT WRITTEN PERMISSION.

X-ON Electronics

Largest Supplier of Electrical and Electronic Components

Click to view similar products for [USB Connectors](#) category:

Click to view products by [EDAC](#) manufacturer:

Other Similar products are found below :

[65-647-8-BK-BU](#) [950](#) [E8144-B01021-L](#) [A-USB A-LP-SMT-C](#) [A-USB B-TOP-C](#) [MUSBA511N5](#) [MUSBD11135](#) [217450-1](#) [CA 6 W LD](#)
[KMBVX-TH-5S-B30](#) [896-30-004-00-000000](#) [KUSBVX-BS1N-W30](#) [KUSBX-AP-KIT-SCBLK](#) [KUSBX-AS2N-W](#) [KUSBX-SMT2AP1S-W](#)
[KUSBX-SMT2AP1S-W30](#) [935](#) [957](#) [30-498-6](#) [1734082-1](#) [30-1574](#) [30-470](#) [30-489](#) [30-541](#) [30-572-3](#) [MAB 8 SN V](#) [A-USB A-2P-C](#)
[MIKROE-1451](#) [USBFTV2PEM2G](#) [USBFTVC6ZN](#) [KUSBX-AS2N-W30](#) [KUSBX-SLAS1N-W](#) [KUSBX-SMT-AS1N-W30](#) [4689-1](#) [1-](#)
[1734084-2](#) [E8110-001-01](#) [33UBARS1-04SW11](#) [33UBAR-04SW11](#) [USBF21ZNSCC](#) [USBBFTV6ZC](#) [10135326-001LF](#) [M9177/3-1](#) [925](#)
[4198](#) [690-024-633-031](#) [KUSBEX-BSFS1N-W](#) [USBFTVC6MRG](#) [UA-20BMFA-SL8001](#) [17-200011](#) [17-250101](#)