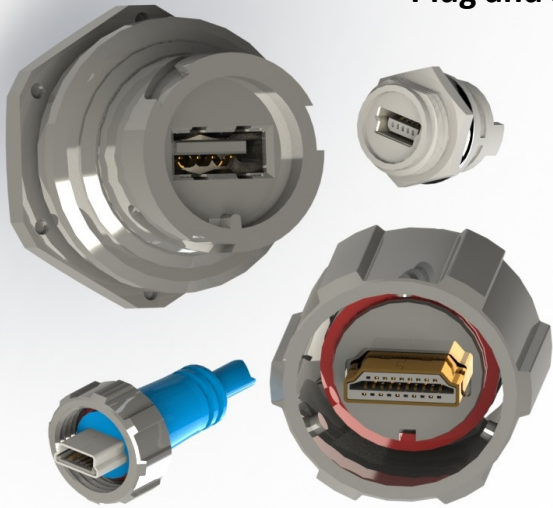




SERIES 690W WATERPROOF USB & HDMI



Plug and Socket , USB and HDMI Connectors



- E-SEAL Waterproof Connectors: Standard USB TypeA, Micro USB, Mini USB Type B and HDMI Type A
- Compatible with all Windows versions
- 1.2Mbps or 480Mbps communication speed
- Complies with USB1.0 (USB2.0 upon request)
- Compatible with asynchronous and isochronous data transfer methods
- Silicone rubber seals
- Secure latching system for safe mating under severe vibration or shock conditions
- Degree of Protection: IP67 as per IEC60529



Specifications:

Insulator Material	Thermoplastic, UL 94V-0 Rated, Black color
Contact Material	Plugs and Sockets: Copper Alloy
Contact Plating	Gold Plating over Nickel underplating
Shell Material	Nickel Plated Steel
Rubber Seals	Silicone
O-Ring	Silicone
Signal Current Rating	1A Per Contact
Contact Resistance	50 Milliohms MAX
Insulation Resistance	100 Megohms MIN
Operating Temp.	-25°C To +85°C



M00-383-001 Cap is used for:
1. 690-W04-260-014
2. 690-W19-260-012

M00-383-002 Cap is used for:
1. 690-W05-260-044

Ordering Code:

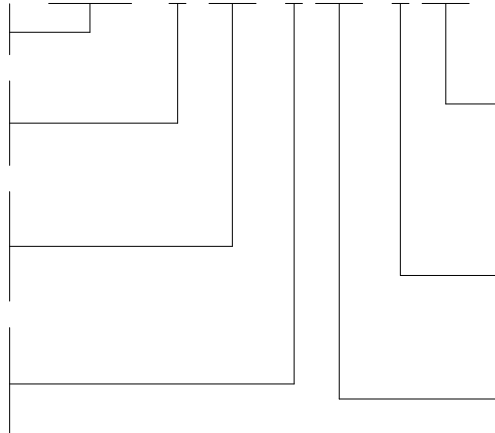
690-W04-260-012

SERIES:
USB, HDMI 690

CROSS / REF:
EDAC CODE
WATERPROOF W

NO. OF CONTACTS:
(STANDARD USB-A) 4 CONTACT PINS 04
(MICRO OR MINI USB) 5 CONTACT PINS 05
(HDMI) 19 CONTACT PINS 19

CONTACT PLATING
Gold Flash Plating over Nickel 2
15 µIN of Gold Plating over Nickel 3
30 µIN of Gold Plating over Nickel 6



TYPE:
11 HDMI TYPE A, MALE
12 HDMI TYPE A, FEMALE
13 USB TYPE A, MALE
14 USB TYPE A, FEMALE
43 MINI USB TYPE B, MALE
44 MINI USB TYPE B, FEMALE
83 MICRO USB, FEMALE

INSULATOR COLOR:
0 BLACK

CONTACT CODE:
60 STRAIGHT TYPE
90 SMT TYPE (MICRO USB ONLY)

X-ON Electronics

Largest Supplier of Electrical and Electronic Components

Click to view similar products for [USB Connectors](#) category:

Click to view products by [EDAC](#) manufacturer:

Other Similar products are found below :

[65-647-8-BK-BU](#) [950](#) [E8144-B01021-L](#) [A-USB A-LP-SMT-C](#) [A-USB B-TOP-C](#) [MUSBA511N5](#) [MUSBD11135](#) [217450-1](#) [CA 6 W LD](#)
[KMBVX-TH-5S-B30](#) [896-30-004-00-000000](#) [KUSBVX-BS1N-W30](#) [KUSBX-AP-KIT-SCBLK](#) [KUSBX-AS2N-W](#) [KUSBX-SMT2AP1S-W](#)
[KUSBX-SMT2AP1S-W30](#) [935](#) [957](#) [30-498-6](#) [1734082-1](#) [30-1574](#) [30-470](#) [30-489](#) [30-541](#) [30-572-3](#) [MAB 8 SN V](#) [A-USB A-2P-C](#)
[MIKROE-1451](#) [USBFTV2PEM2G](#) [USBFTVC6ZN](#) [KUSBX-AS2N-W30](#) [KUSBX-SLAS1N-W](#) [KUSBX-SMT-AS1N-W30](#) [4689-1](#) [1-](#)
[1734084-2](#) [E8110-001-01](#) [33UBARS1-04SW11](#) [33UBAR-04SW11](#) [USBF21ZNSCC](#) [USBBFTV6ZC](#) [10135326-001LF](#) [M9177/3-1](#) [925](#)
[4198](#) [690-024-633-031](#) [KUSBEX-BSFS1N-W](#) [USBFTVC6MRG](#) [UA-20BMFA-SL8001](#) [17-200011](#) [17-250101](#)