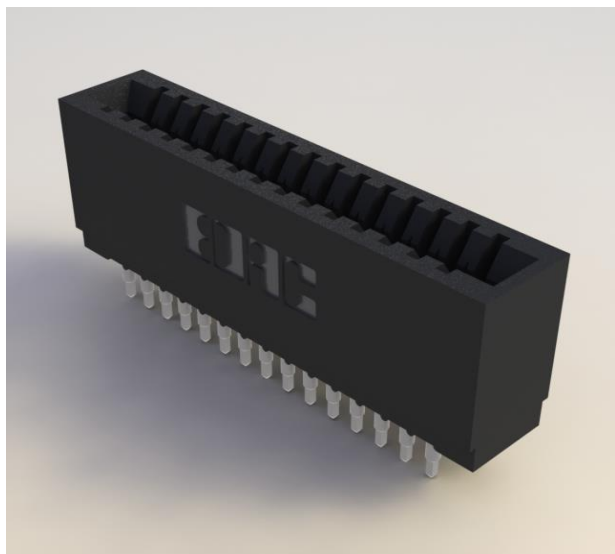


Card Edge Connector 0.100" (2.54mm) Pitch



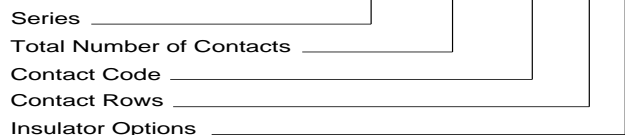
FEATURES:

- .100" (2.54mm) Contact spacing x .200" (5.08mm) row spacing
- Accepts .062" (1.57mm) nominal thickness P.C. board
- High profile insulator body, .645(16.38) with notched ends
Option
- Contact termination options include P.C. tail, and .025" (0.64mm) square wire wrap
- Press-Fit compliant section for gas tight reliable connection in plated through holes eliminates soldering operations
- Single or dual row configurations
- Accepts between contact and In-Contact polarizing keys (Special features if requested)
- Tools available for insulator and contact removal. Simple "Flat Rock" tooling is used for connector installation.
- RoHS Compliant & UL Certified

SPECIFICATIONS:

Insulator Material	UL 94V-0 Thermoplastic Polyester, Black
Contact Material	Copper Alloy
Contact Plating	30u" Gold Plating on mating area and Tin Plating on tails with Nickel underplating all over
Current Rating	3 Ampere
Contact Resistance	10 milliohms Maximum
Dielectric Withstand Voltage	1200 VAC rms at sea level between adjacent contacts
Insulation Resistance	5000 Megohms Minimum
Operating Temperature	-40°C to +105°C
Insertion Force	16oz (4.45N) Maximum per contact pair when tested with .070" (1.78mm) thick gauge
Withdrawal Force	1oz (0.28N) Minimum per contact pair when tested with .054" (1.37mm) thick gauge
Contact insertion into Hole	20 lbs (89 N) Maximum
Contact Retention in Hole	10 lbs (44 N) Minimum
Re-Insertability in same Hole	3 Times Minimum

EXAMPLE PART NUMBER: **745-100-520-206**



Series: 745

Total Number of Contacts:

005, 006, 075
010, 012, 150

Contact Rows

Single Row
Dual Row

Contact Rows:

1
2

Description

Single Row
Dual Row

Insulator Options:

01 .645" (16.38mm) Full Height Ends
06 .550" (13.97mm) Notched Ends

Contact Code

520
522
525
540
541
545
560

Description & Contact Point

P.C. Tail Regular Point
P.C. Tail Regular Point
P.C. Tail High Point
Wire Wrap Regular Point
Wire Wrap Regular Point
Wire Wrap High Point
Make Before Break (MBB) Contacts

Tail Length "G"

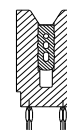
.190 (4.83)
.375 (9.53)
.190 (4.83)
.560 (14.22)
.750 (19.05)
.560 (14.22)
.190 (4.83)

Ordering Code Notes:

- 1) All connector sizes up to 75 contacts single row / 150 contacts dual row are available upon request.
- 2) Make-Before-Break switching contacts, assembled in specific contact positions, are available upon request.

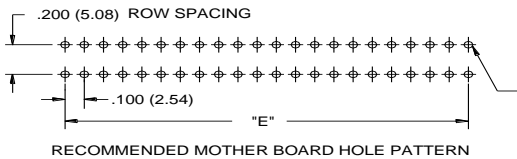
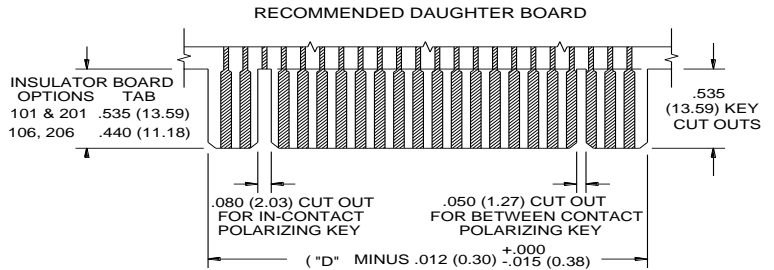
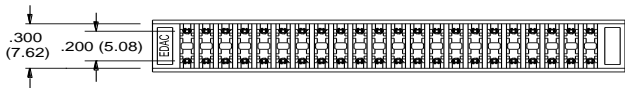
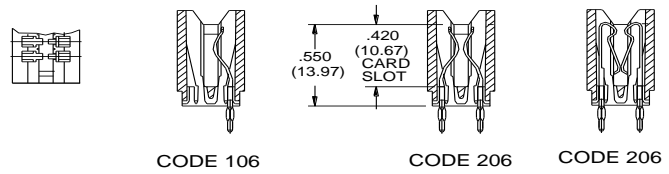
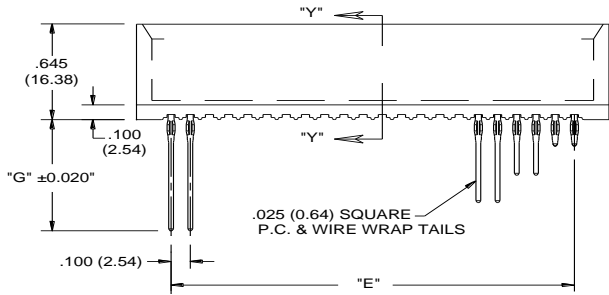
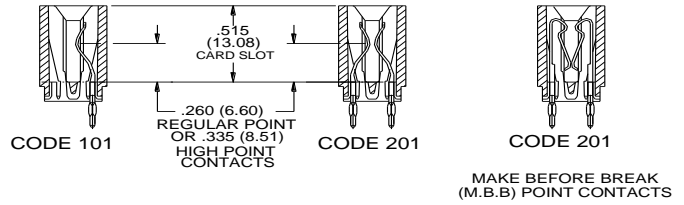
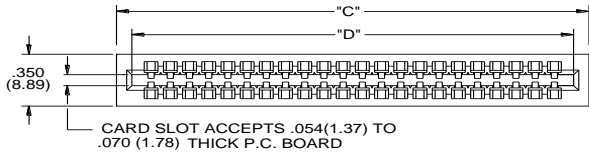
IN-CONTACT
POLARIZING KEY
P/N 745-240-328

BETWEEN CONTACT
POLARIZING KEY
P/N 341-240-318



Card Edge Connector 0.100" (2.54mm) Pitch

SECTIONS "Y" - "Y" CONTACT ROWS & INSULATOR OPTIONS



.040 (1.02) DIA ± .003 (0.08)
SEE NOTE BELOW
Φ .008 (0.20) DIA

TO OBTAIN OPTIMUM COMPLIANT SECTION PERFORMANCE,
DRILL HOLES .0453 ± .001 (1.15 ± 0.03) DIAMETER
COPPER PLATE, .001 (25.4 MICRONS) MINIMUM THICKNESS,
FOLLOWED BY TIN PLATE TO PROVIDE FINISHED
HOLES .040 ± .003 (1.02 ± 0.08) DIAMETER

NUMBER OF CONTACTS		"C"		"D"		"E"	
Single	Double	Inch	mm	Inch	mm	Inch	mm
5	10	0.760	19.30	0.600	15.24	0.400	10.16
10	20	1.260	32.00	4.400	111.76	0.900	22.86
15	30	1.760	44.70	1.600	40.64	1.400	35.56
18	36	2.060	52.32	1.900	48.26	1.700	43.18
22	44	2.460	62.48	2.300	58.42	2.100	53.34
25	50	2.760	70.10	2.600	66.04	2.400	60.96
28	56	3.060	77.72	2.900	73.66	2.700	68.58
30	60	3.260	82.80	3.100	78.74	2.900	73.66
31	62	3.360	85.34	3.200	81.28	3.000	76.20
35	70	3.760	95.50	3.600	91.44	3.400	86.36
36	72	3.860	98.04	3.700	93.98	3.500	88.90
43	86	4.560	115.82	4.400	111.76	4.200	106.68
50	100	5.260	133.60	5.100	129.54	4.900	124.46
75	150	7.760	197.10	7.600	193.04	7.400	187.96

X-ON Electronics

Largest Supplier of Electrical and Electronic Components

Click to view similar products for [Standard Card Edge Connectors](#) category:

Click to view products by [EDAC](#) manufacturer:

Other Similar products are found below :

[CR7E-30DB-3.96E\(72\)](#) [6565204-6](#) [PKC-156](#) [1437274-4](#) [147889-1](#) [1489165-4](#) [EBT15622B2X](#) [1-582587-1](#) [284-0102-12100](#)
[306022901000000](#) [307-012-502-202](#) [307-056-520-300](#) [245-062-520-350](#) [287-0032-12101](#) [306-028-525-102](#) [307-072-526-202](#) [345-060-559-](#)
[303](#) [392-008-559-201](#) [534671-1](#) [341-240-317](#) [345-044-500-300](#) [346-240-318](#) [395-100-524-300](#) [09-07-2032](#) [10035388-802LF](#) [10122859-](#)
[009LF](#) [10127905-B04B24BLF](#) [530555-1](#) [5-678046-1](#) [73726-0005](#) [66308-1](#) [1-1437275-6](#) [PEC-07-02-T-S-A](#) [346-014-520-801](#) [307-048-502-](#)
[202](#) [CE100F22-9-C](#) [CE100F26-7-C](#) [CE100F28-3-D](#) [CE156F18-9-C](#) [CE156F22-5-D](#) [CE156F22-9-C](#) [CT100F22-2-D](#) [CT100F22-3-D](#)
[CT100F24-2-D](#) [CT100F24-3-D](#) [CT100F24-6-C](#) [CT156F22-4-D](#) [MLSS100-12-C](#) [MLSS100-16-C](#) [SCC100F-11-C](#)