

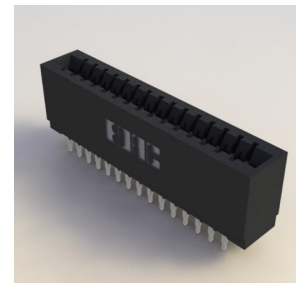
745 SERIES



Press-Fit Card Edge Connectors 0.100" (2.54mm) Pitch

Features:

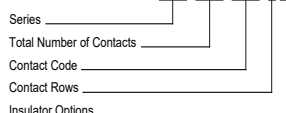
- 0.100" (2.54mm) contact spacing x 0.200" (5.08mm) row spacing
- Accepts 0.062" (1.57mm) nominal thickness P.C. board
- High profile insulator body, 0.645"(16.38mm) with notched ends option
- Contact termination options include P.C. tail, and 0.025" (0.64mm) square wire wrap
- Press-fit compliant section for gas tight reliable connection in plated through holes eliminates soldering operations
- Single or dual row configurations
- Accepts between contact and in-contact polarizing keys (special features if requested)
- Tools available for insulator and contact removal. Simple "flat rock" tooling is used for connector installation
- RoHS Compliant & UL Certified



Specifications:

| | |
|---------------------------------|---|
| Insulator Material | UL 94V-0 Thermoplastic Polyester, Black |
| Contact Material | Copper Alloy |
| Contact Plating | 30µ" Gold Plating on mating area and Tin Plating on tails with Nickel underplating all over |
| Current Rating | 3 amps |
| Contact Resistance | 10 milliohms Maximum |
| Dielectric Withstanding Voltage | 1200 V AC rms at sea level between adjacent contacts |
| Insulation Resistance | 5000 megaohms Minimum |
| Operating Temperature | -40°C to +105°C |
| Insertion Force | 16 oz (4.45 N) maximum per contact pair when tested with .070" (1.78mm) thick gauge |
| Withdrawal Force | 1 oz (0.28 N) minimum per contact pair when tested with .054" (1.37mm) thick gauge |
| Contact insertion into Hole | 20 lbs (89 N) Maximum |
| Contact Retention in Hole | 10 lbs (44 N) Minimum |
| Re-Insertability in same Hole | 3 Times Minimum |

Example Part Number: **745-100-520-206**



Series:

745

Total Number of Contacts: Contact Rows:

005, 006, . . . 075 Single Row
010, 012, . . . 150 Dual Row

| Contact Code: | Description: | Contact Point: | Tail Length "G": |
|---------------|----------------------------------|----------------|------------------|
| 520 | P.C. Tail | Regular Point | .190 (4.83) |
| 522 | P.C. Tail | Regular Point | .375 (9.53) |
| 525 | P.C. Tail | High Point | .190 (4.83) |
| 540 | Wire Wrap | Regular Point | .560 (14.22) |
| 541 | Wire Wrap | Regular Point | .750 (19.05) |
| 545 | Wire Wrap | High Point | .560 (14.22) |
| 560 | Make Before Break (MBB) Contacts | | .190 (4.83) |

Contact Rows: Description:

1 Single Row
2 Dual Row

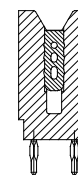
Insulator Options: Description:

01 .645"(16.38mm) Full Height Ends
06 .550"(13.97mm) Notched Ends

IN-CONTACT POLARIZING KEY P/N 745-240-328



BETWEEN CONTACT POLARIZING KEY P/N 341-240-318

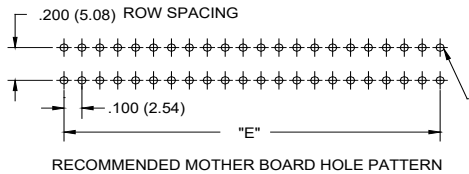
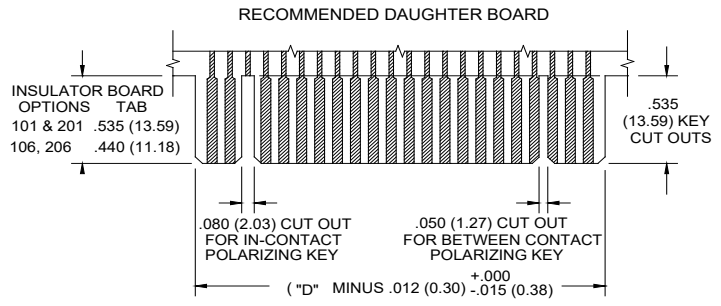
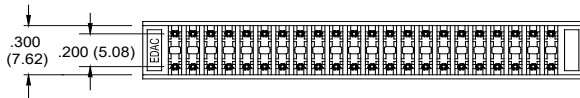
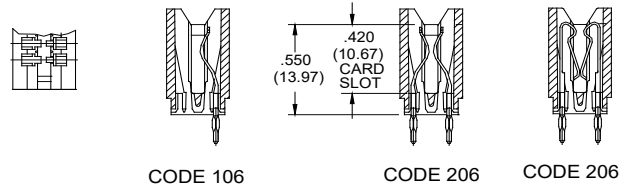
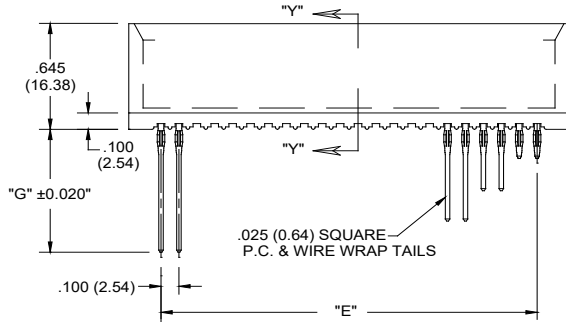
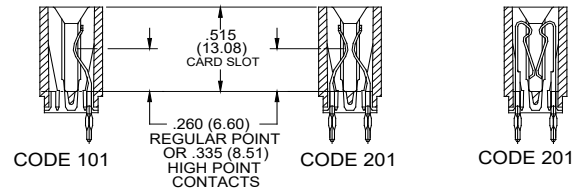
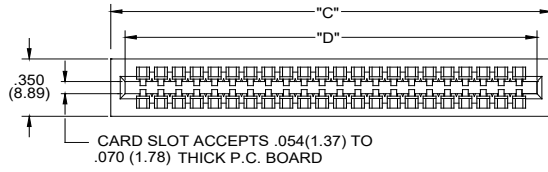


Ordering Code Notes:

- 1) All connector sizes up to 75 contacts single row / 150 contacts dual row are available upon request.
- 2) Make-Before-Break switching contacts, assembled in specific contact positions are available upon request.

Press-Fit Card Edge Connectors 0.100" (2.54mm) Pitch

SECTIONS "Y" - "Y" CONTACT ROWS & INSULATOR OPTIONS



.040 (1.02) DIA ± .003 (0.08)
SEE NOTE BELOW
Φ .008 (0.20) DIA

TO OBTAIN OPTIMUM COMPLIANT SECTION PERFORMANCE,
DRILL HOLES .0453 ± .001 (1.15 ± 0.03) DIAMETER
COPPER PLATE, .001 (25.4 MICRONS) MINIMUM THICKNESS,
FOLLOWED BY TIN PLATE TO PROVIDE FINISHED
HOLES .040 ± .003 (1.02 ± 0.08) DIAMETER

| NUMBER OF CONTACTS | | "C" | | "D" | | "E" | |
|--------------------|--------|-------|--------|-------|--------|-------|--------|
| Single | Double | Inch | mm | Inch | mm | Inch | mm |
| 5 | 10 | 0.760 | 19.30 | 0.600 | 15.24 | 0.400 | 10.16 |
| 10 | 20 | 1.260 | 32.00 | 4.400 | 111.76 | 0.900 | 22.86 |
| 15 | 30 | 1.760 | 44.70 | 1.600 | 40.64 | 1.400 | 35.56 |
| 18 | 36 | 2.060 | 52.32 | 1.900 | 48.26 | 1.700 | 43.18 |
| 22 | 44 | 2.460 | 62.48 | 2.300 | 58.42 | 2.100 | 53.34 |
| 25 | 50 | 2.760 | 70.10 | 2.600 | 66.04 | 2.400 | 60.96 |
| 28 | 56 | 3.060 | 77.72 | 2.900 | 73.66 | 2.700 | 68.58 |
| 30 | 60 | 3.260 | 82.80 | 3.100 | 78.74 | 2.900 | 73.66 |
| 31 | 62 | 3.360 | 85.34 | 3.200 | 81.28 | 3.000 | 76.20 |
| 35 | 70 | 3.760 | 95.50 | 3.600 | 91.44 | 3.400 | 86.36 |
| 36 | 72 | 3.860 | 98.04 | 3.700 | 93.98 | 3.500 | 88.90 |
| 43 | 86 | 4.560 | 115.82 | 4.400 | 111.76 | 4.200 | 106.68 |
| 50 | 100 | 5.260 | 133.60 | 5.100 | 129.54 | 4.900 | 124.46 |
| 75 | 150 | 7.760 | 197.10 | 7.600 | 193.04 | 7.400 | 187.96 |

X-ON Electronics

Largest Supplier of Electrical and Electronic Components

Click to view similar products for [Standard Card Edge Connectors](#) category:

Click to view products by [EDAC](#) manufacturer:

Other Similar products are found below :

[CR7E-30DB-3.96E\(72\)](#) [6565204-6](#) [PKC-156](#) [1437274-4](#) [147889-1](#) [1489165-4](#) [EBT15622B2X](#) [1-582587-1](#) [284-0102-12100](#)
[306022901000000](#) [307-012-502-202](#) [307-056-520-300](#) [245-062-520-350](#) [287-0032-12101](#) [306-028-525-102](#) [307-072-526-202](#) [345-060-559-](#)
[303](#) [392-008-559-201](#) [534671-1](#) [341-240-317](#) [345-044-500-300](#) [346-240-318](#) [395-100-524-300](#) [09-07-2032](#) [10035388-802LF](#) [10122859-](#)
[009LF](#) [10127905-B04B24BLF](#) [530555-1](#) [5-678046-1](#) [73726-0005](#) [66308-1](#) [1-1437275-6](#) [PEC-07-02-T-S-A](#) [346-014-520-801](#) [307-048-502-](#)
[202](#) [CE100F22-9-C](#) [CE100F26-7-C](#) [CE100F28-3-D](#) [CE156F18-9-C](#) [CE156F22-5-D](#) [CE156F22-9-C](#) [CT100F22-2-D](#) [CT100F22-3-D](#)
[CT100F24-2-D](#) [CT100F24-3-D](#) [CT100F24-6-C](#) [CT156F22-4-D](#) [MLSS100-12-C](#) [MLSS100-16-C](#) [SCC100F-11-C](#)