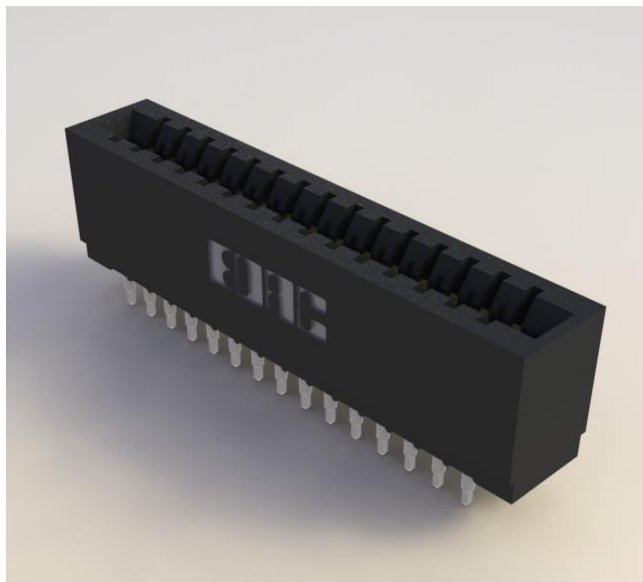


## Card Edge Connector 0.125" (3.175mm) Pitch



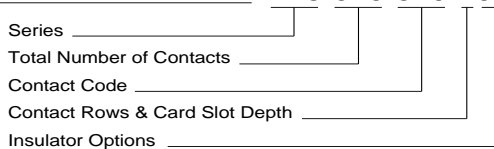
### FEATURES:

- .125" (3.175mm) Contact spacing x .250" (6.35mm) row spacing
- Accepts .062" (1.57mm) nominal thickness P.C. board
- High profile insulator body, .645(16.38) with notched ends  
Option
- Contact termination options include P.C. tail, and .025" (0.64mm) square wire wrap
- Press-Fit compliant section for gas tight reliable connection in plated through holes eliminates soldering operations
- Single or dual row configurations
- Accepts between contact and In-Contact polarizing keys (Special features if requested)
- Tools available for insulator and contact removal. Simple "Flat Rock" tooling is used for connector installation.
- RoHS Compliant & UL Certified

### SPECIFICATIONS:

Insulator Material	UL 94V-0 Thermoplastic Polyester, Black
Contact Material	Copper Alloy
Contact Plating	30u" Gold Plating on mating area and Tin Plating on tails with Nickel underplating all over
Current Rating	3 Ampere
Contact Resistance	10 milliohms Maximum
Dielectric Withstand Voltage	1500 VAC rms at sea level between adjacent contacts
Insulation Resistance	5000 Megaohms Minimum
Operating Temperature	-40°C to +105°C
Insertion Force	16oz (4.45N) Maximum per contact pair when tested with .070" (1.78mm) thick gauge
Withdrawal Force	1oz (0.28N) Minimum per contact pair when tested with .054" (1.37mm) thick gauge
Contact insertion into Hole	20 lbs (89 N) Maximum
Contact Retention in Hole	10 lbs (44 N) Minimum
Re-Insertability in same Hole	3 Times Minimum

EXAMPLE PART NUMBER: 746-070-520-206



Series: **746**

Total Number of Contacts:	Contact Rows
005, 006, . . . . 060	Single Row
010, 012, . . . . 120	Dual Row

Contact Rows & Card slot Depth	Description
1	Single Row .515(13.08) Slot Depth
2	Dual Row .515(13.08) Slot Depth
5	Single Row .340(8.64) Slot Depth
6	Dual Row .340(8.64) Slot Depth

Insulator Options:	Description
01	.645" (16.38mm) Full Height Ends
06	.550" (13.97mm) Notched Ends

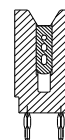
Contact Code	Description & Contact Point	Tail Length "G"
520	P.C. Tail Regular Point	.190 (4.83)
525	P.C. Tail High Point	.190 (4.83)
527	P.C. Tail High Point	.375 (9.53)
540	Wire Wrap Regular Point	.560 (14.22)
541	Wire Wrap Regular Point	.750 (19.05)
545	Wire Wrap High Point	.560 (14.22)
553	Wire Wrap High Point	.702 (17.83)

### Ordering Code Notes:

- 1) All connector sizes up to 60 contacts single row / 120 contacts dual row are available upon request.
- 2) Make-Before-Break switching contacts, assembled in specific contact positions, are available upon request.

IN-CONTACT  
POLARIZING KEY  
P/N 745-240-328

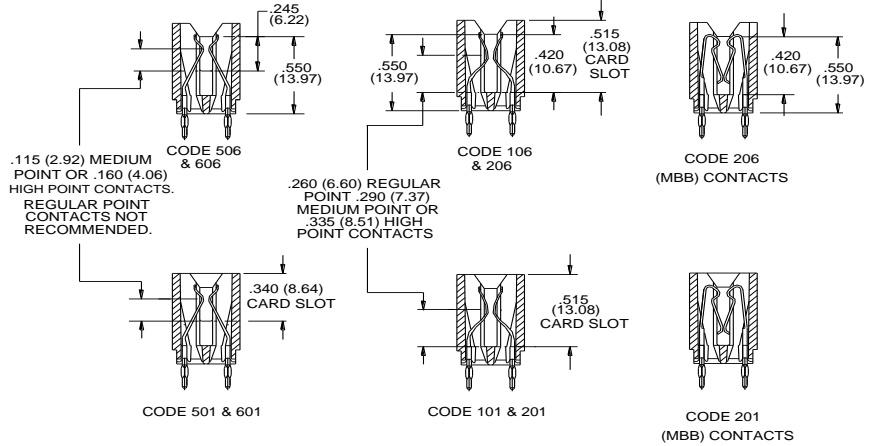
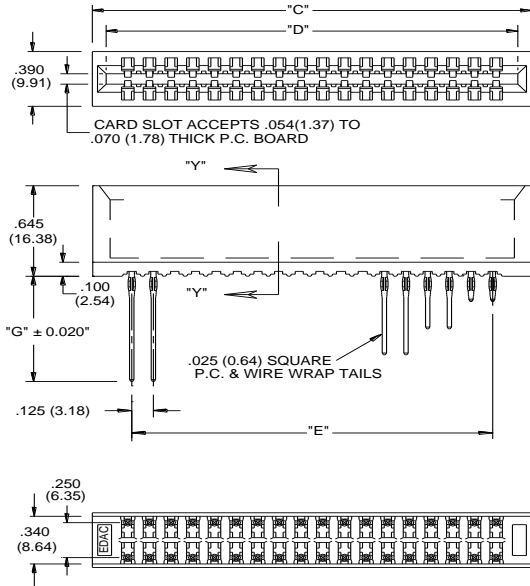
BETWEEN CONTACT  
POLARIZING KEY  
P/N 306-240-318



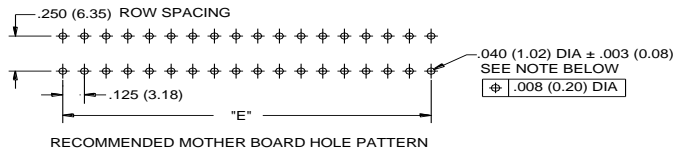
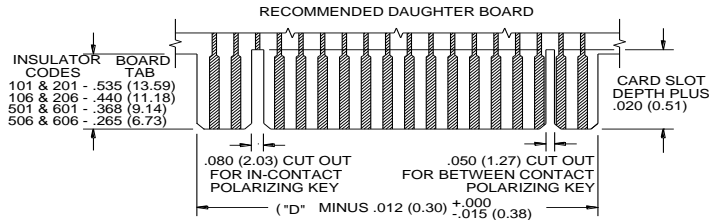
## Card Edge Connector 0.125" (3.175mm) Pitch

### SECTION "Y" - "Y" CONTACT ROWS & INSULATOR OPTIONS

**MBB CONTACTS**  
MUST BE USED IN PAIRS AND IN  
INSULATOR AND CARD  
SLOT DEPTH OPTION SHOWN  
NOT AVAILABLE FOR 726 SERIES



Single Row Versions May Require Backup Springs Depending upon the Application.



TO OBTAIN OPTIMUM COMPLIANT SECTION PERFORMANCE, DRILL HOLES .0453 ± .001 (1.15 ± 0.03) DIAMETER COPPER PLATE, .001 (25.4 MICRONS) MINIMUM THICKNESS, FOLLOWED BY TIN PLATE TO PROVIDE FINISHED HOLES .040 ± .003 (1.02 ± 0.08) DIAMETER

NUMBER OF CONTACTS		"C"		"D"		"E"	
Single	Double	Inch	mm	Inch	mm	Inch	mm
5	10	0.910	23.11	0.750	19.05	0.500	12.70
6	12	1.035	26.29	0.875	22.23	0.625	15.88
15	30	2.160	54.86	2.000	50.80	1.750	44.45
18	36	2.535	64.39	2.375	60.33	2.125	53.98
22	44	3.035	77.09	2.875	73.03	2.625	66.68
25	50	3.410	86.61	3.250	82.55	3.000	76.20
28	56	3.785	96.14	3.625	92.08	3.375	85.73
30	60	4.035	102.49	3.875	98.43	3.625	92.08
35	70	4.660	118.36	4.500	114.30	4.250	107.95
36	72	4.785	121.54	4.625	117.48	4.375	111.13
40	80	5.285	134.24	5.125	130.18	4.875	123.83
43	86	5.660	143.76	5.500	139.70	5.250	133.35
50	100	6.535	165.99	6.375	161.93	6.125	155.58
60	120	7.785	197.74	7.625	193.68	7.375	187.33

## X-ON Electronics

Largest Supplier of Electrical and Electronic Components

*Click to view similar products for [Standard Card Edge Connectors](#) category:*

*Click to view products by [EDAC](#) manufacturer:*

Other Similar products are found below :

[CR7E-30DB-3.96E\(72\)](#) [6565204-6](#) [PKC-156](#) [1437274-4](#) [147889-1](#) [1489165-4](#) [EBT15622B2X](#) [1-582587-1](#) [284-0102-12100](#)  
[306022901000000](#) [307-012-502-202](#) [307-056-520-300](#) [245-062-520-350](#) [287-0032-12101](#) [306-028-525-102](#) [307-072-526-202](#) [345-060-559-](#)  
[303](#) [392-008-559-201](#) [534671-1](#) [341-240-317](#) [345-044-500-300](#) [346-240-318](#) [395-100-524-300](#) [09-07-2032](#) [10035388-802LF](#) [10122859-](#)  
[009LF](#) [10127905-B04B24BLF](#) [530555-1](#) [5-678046-1](#) [73726-0005](#) [66308-1](#) [1-1437275-6](#) [PEC-07-02-T-S-A](#) [346-014-520-801](#) [307-048-502-](#)  
[202](#) [CE100F22-9-C](#) [CE100F26-7-C](#) [CE100F28-3-D](#) [CE156F18-9-C](#) [CE156F22-5-D](#) [CE156F22-9-C](#) [CT100F22-2-D](#) [CT100F22-3-D](#)  
[CT100F24-2-D](#) [CT100F24-3-D](#) [CT100F24-6-C](#) [CT156F22-4-D](#) [MLSS100-12-C](#) [MLSS100-16-C](#) [SCC100F-11-C](#)