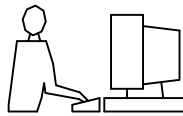
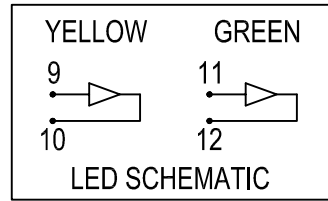
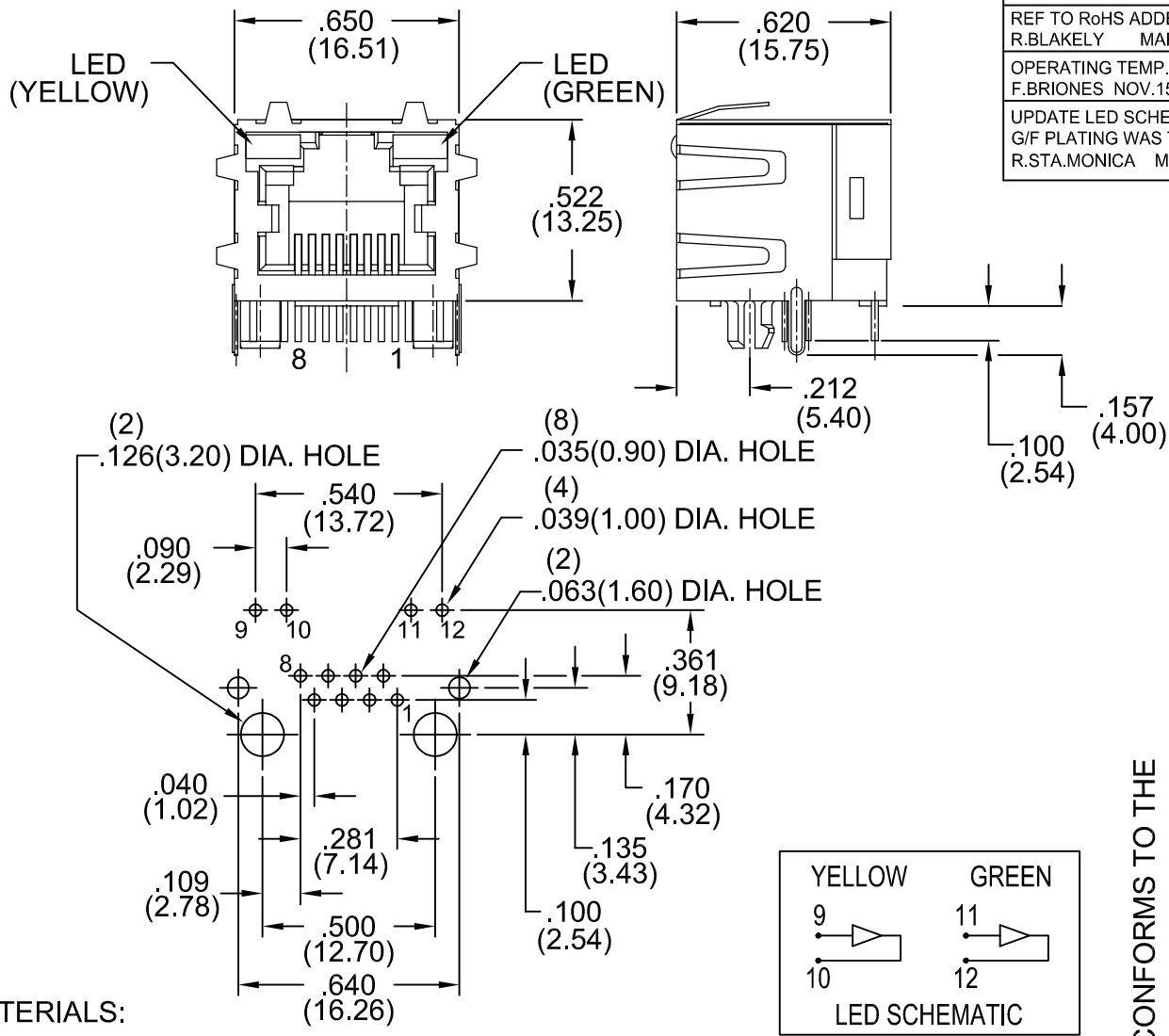


THIS IS A C.A.D. GENERATED DRAWING
DO NOT MAKE MANUAL REVISIONS TO MASTER.



ISSUE NUMBER		
ORIGINAL		①
PCB HOLE LAYOUT NUMBERING ADDED		
R.BLAKEY	DEC.7/04	②
REF TO RoHS ADDED.		
R.BLAKEY	MAR.12/06	③
OPERATING TEMP. ADDED		
F.BRIONES	NOV.15/12	④
UPDATE LED SCHEMATIC		
G/F PLATING WAS TIN PLATING		
R.STA.MONICA	MAY.19/2015	⑤

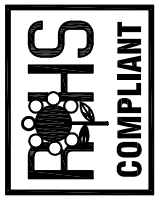


MATERIALS:

- HOUSING: NYLON 46, UL94V-0, COLOR BLACK
- CONTACTS: PHOSPHOR BRONZE, WITH SELECTIVE GOLD PLATING OVER NICKEL ON CONTACT AREA
GOLD FLASH PLATING ON TAILS
- SHIELD: COPPER ALLOY NICKEL PLATED
 - A20-108-261-310 GOLD FLASH
 - A20-108-361-310 15 MICROINCHES OF GOLD
 - A20-108-661-310 30 MICROINCHES OF GOLD
 - A20-108-961-310 50 MICROINCHES OF GOLD

OPERATING TEMPERATURE: -40°C TO +85°C
CAVITY CONFIRMS TO FCC RULES AND REGULATIONS PART 68, SUBPART F.

THIS SERIES FULLY CONFORMS TO THE EUROPEAN UNION DIRECTIVES 2011/65/EU FOR RoHS COMPLIANCY.



SINGLE PORT, 8 POSITIONS WITH LED'S SHIELDED R/ANGLE PCB	ACAD REFERENCE NO. A20-108-261-310	
	DRAWN: F.BRIONES	DATE: NOV.4/03
	CHECKED:	DATE:
	SCALE:	SHEET 1 OF 1
	DRAWING NUMBER	ISSUE
	A20-108-261-310	5

X-ON Electronics

Largest Supplier of Electrical and Electronic Components

Click to view similar products for [Modular Connectors](#) / [Ethernet Connectors](#) category:

Click to view products by [EDAC](#) manufacturer:

Other Similar products are found below :

[8949-H88/06BLKA/SN](#) [74441-0010/BKN](#) [MP1010RX-1000](#) [MP44RX-1000](#) [PHJ-4P4C-1-V-4](#) [PHP-6P6C-5](#) [GAX-3-66](#) [GAX-8-62](#) [GDCX-PA-66-50](#) [GDCX-PN-64](#) [GDCX-PN-66](#) [GDCX-PN-66-50](#) [GDLX-A-66](#) [GDLX-N-66](#) [GDLX-S-66](#) [GDLX-S-88K](#) [GDTX-S-88-50](#) [GDX-PA-1010](#) [GLX-N-1010M-BLK](#) [GLX-S-88M-BLK](#) [GMX-N-1010](#) [GMX-S-1010](#) [GMX-S-66](#) [GMX-SMT4-N-88](#) [GPX-2-64](#) [GSGX-N-2-88](#) [GSGX-N-4-88](#) [GSX-NS2-88-3.05-50](#) [PT-108A-8C-UL](#) [PT-J951-8C](#) [PTS-J531-8CS-50UL](#) [1-1775629-2](#) [A-2014-0-4](#) [GWLX-S-88-GR](#) [GWLX-S9-88-YG](#) [DC-1021-8-WH-6](#) [1300530003](#) [1324640-4](#) [RJ11FTVC2G](#) [RJ11FTVC2N](#) [RJFTVX2SA1G](#) [132764-001](#) [1413235](#) [MP88X-1000](#) [MPS88RX-5000](#) [MRJR-5481-0F2](#) [E5288-S000K3-L](#) [E5908-15A242-L](#) [155302-001](#) [AX100653](#)