

# TopMax-II



**TopMaxII** is a high-speed universal device programmer for USB 2.0 PC-interface. It programs a 64Mbit (AM29LV641) flash memory in 42 seconds. This is a true low-price production oriented system. The **TopMaxII** meets the demands of today's programming solution for lab and production line applications.

## PRODUCT HIGHLIGHTS

- High-speed Universal Programmer
- Support USB 1.1 / 2.0 Port in PC

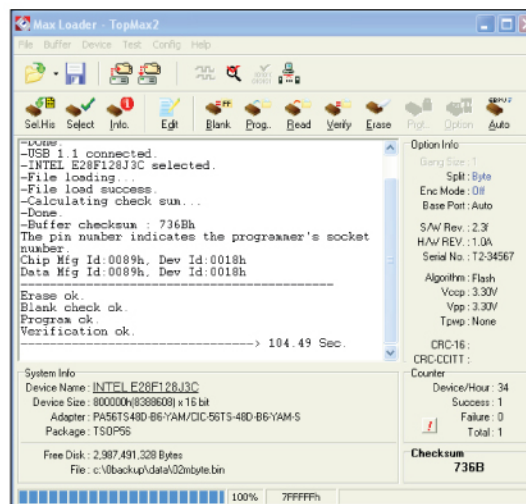
## KEY FEATURES

### <Software>

- Auto search device select function supports E(E)PROMs & Microcontrollers.
- Device insertion test identifies improperly inserted device before programming.
- Gang Program Mode allows programmers up to 8 units as concurrent programming system. (External START key allows TopMaxII to operate in stand-alone mode)
- Check for incorrect device insertion, backward, incorrect position, and poor pin contact.
- Device Operations: Read, Blank check, Program, Verify, Checksum, Data compare, Security, Auto(blank check-program-verify), Option Bit program.
- Display programming parameters and optional bit information on the screen.
- Set device/buffer address ranges before programming devices.
- Extensive on-line F1 help system provides text and graphics.
- User-changeable programming parameters.
- Built-in editor for both buffer date and test vectors.
- Support Binary and all hex files (POF and JEDEC, Intel Hex, Motorola S Records, Tekhex, straight hex, hex-space, Extended Tekhex, and others, automatic file type recognition) with Load, Edit, and Save commands.

### <Hardware>

- One on-board FPGA for extremely fast communication.
- Supports real low-voltage support :  
5, 3.3, 2.7, 1.8, 1.5 volt for programming power.
- Detects all pin locations for poor or damaged pin contacts.
- External START key allows production programming mode.
- Internal universal power supply, 110-240 VAC  
(no separate power supply required in foreign country).
- Current limiting protects hardware circuit from improperly inserted or defective chips and operation errors.
- Standard 48-pin ZIF (Zero Insertion Force) socket accepts both 300mil and 600 mil DIP devices.
- True universal pin driver hardware.
- Support a high-speed USB2.0 port for PC interface.
- Support a standard IEEE-1149.1 (JTAG) port
- Hardware diagnostic program exams all socket-pin drivers before using programmer.



# TopMax-II



## DEVICES PROGRAMMED

- M25Pxx, MX25Lxx, S25LFxx, SST25VFxxx
- NAND Flash Memory
  - Samsung K9Kxxx, K5Axxx, K5Fxxx,
  - M-System MDOC-256 / 512 / 1G / 2G
  - Toshiba TC58xxx
  - St-Micro NAND01G / 02G / 04G
- 28Fxxx, 29Fxxx, 38Fxxx, 29LVxxx, 26LVxxx, 29GLxxx, 29ALxxx, 29Wxxx, 36xxx, 32HFxxx, 34VFxxx, 37VFxxx, 39SFxxx, 39VFxxx, 45LFxxx, 49LFxxx, 50FWxxx
- 27xxx and 27Cxxx series, from 16 Kbit to 32Mbit with 8-bit/16-bit
- EEPROM 27Exxx, 28xxx, and 28Cxxx series
- 256 Kbit to 32 Mbit 28Fxxx, 29Fxxx, 29Cxxx, 29BVxxx, 29LVxxx, 29Wxxx, 49Fxxx series (1.5, 1.8, 2.7, 3.3, 5.0, or 12 Volt)
- 24Cxx, 24Fxx, 25Cxx, 59Cxx, EPC1/1213/1648, and 93Cxx
- 27Sxx, 7Cxxx, 71xx, 74Sxx, 87Sxx, 82Sxx,
- ispLSI(10/20)xx, ispGAL22V10, ispGDS1(2)x, LC40(41)xx M4Axxx series
- PALs, PALCEs, GALs
  - 16V8, 20V8, 22V10, 20RA10, 26V12 series
- DS12xx, DS13xx, DS15xx, DS16xx series
- PEELs 153, 173, 253, 273, 18CV8, 20CG10 series
- EPLDs PLCxxx, PLSxxx, PLUSxxx, Epxxx, EPCxxx, EPMxxx, PLDxxx, 5Cxxx, 85Cxxx series
- ATF16/20/22Vxx, ATV750/1500/2500
- MACH1xx/2xx/4xx, and xxx-SP series
- MAX5000, MAX7000 series
- 8741, 8742, 8748, 8749 series
- 87C51/52, -FA, -FB, -FC, '528, '652, '654, '54, 89Cxx, 89Sxx, 89LVxx, 89Cxxxx, DCF85xx, 85(87/89)LPCxxx, PXAxx series 87C751/752
- ST62xx, ST7xx, ST9xx, ST10xx series
- XC17Sxxx, 17Vxxx, 72xx, 73xx, XCF01 / 02 / 04 series
- PIC12Cxxx, PIC16xxx, 17xxx, 18xxx series
- MC68705, MC68HC705, MC68HC711, MC68HC908, MC9S08
- Z86Cxx, Z86Exx series

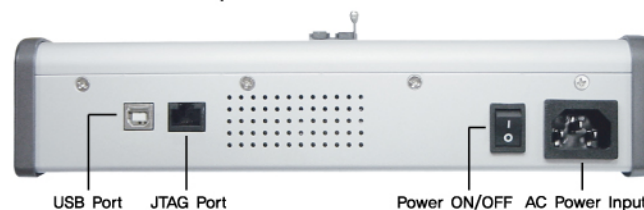
## DEVICES TESTED

- TTL type : 54, 74(S, LS, L, H, HC) series
- CMOS type : 40, 45 series
- Dynamic Memory : 4164 - 1MBit
- Static Memory : 6116 - 6256
- User definable test pattern generation

## TECHNICAL SPECIFICATION

### Dimension:

- Module: 11.0"(L) x 7.25"(W) x 2.5"(H)
- Weight: 3.25 lbs
- Socket: Textool 48 pin ZIF standard.



## SYSTEM REQUIREMENT

- TYPE: 386, 486, Pentium or compatibles. PS/2, Portable(notebook) computer.
- A hard disk drive (4 Megabytes) is recommended for software installation / set up.
- PC RAM size: 512K of conventional memory
- I/O PORT: USB 1.1 or 2.0 port
- OS: WINDOWS 95 / 98 / 2000 / NT / XP or greater

## SAFETY STANDARD

- CE compliant

## STANDARD ACCESSORIES

- Power Cord
- USB Cable
- Software CD and User's Guide

## **X-ON Electronics**

Largest Supplier of Electrical and Electronic Components

*Click to view similar products for [Programmings - Universal & Memory Based](#) category:*

*Click to view products by [EEtools](#) manufacturer:*

Other Similar products are found below :

[DG-ACC-LX-DVD](#) [DSC-PROG-TIMEFLASH-2520](#) [AS5XXX-EK-USB-PB](#) [CT002-S](#) [UMFT4222PROG-IC](#) [PDS4102-PM300N](#)  
[SUPERPRO 6100N](#) [SUPERPRO 610P](#) [AS5000 PROGRAMMER](#) [844USB](#) [866C](#) [CHIPMAX2](#) [PROMAX 2 -4G](#) [TOPMAX III](#)  
[UMFT4222PROG](#)