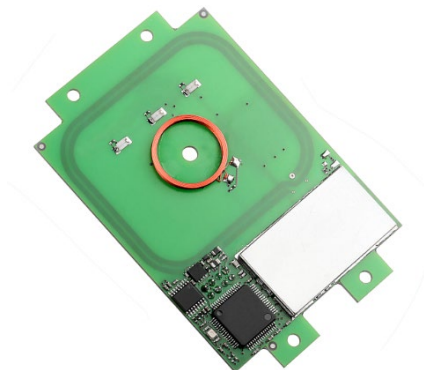


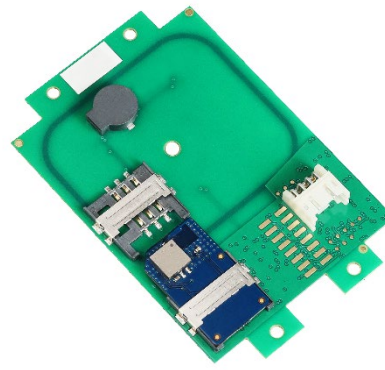
# TWN4 MULTITECH 2 LEGIC M

(SM-4200/4500 FRONTEND)

## MULTI-FREQUENCY RFID MODULE FOR LF, HF, NFC AND BLE



TWN4 MultiTech 2 LEGIC M  
PCB top view (exemplary)



TWN4 MultiTech 2 LEGIC M  
PCB bottom view (exemplary)

The contactless RFID readers and modules of the ELATEC TWN4 MultiTech 2 LEGIC family are a direct enhancement of the TWN4 MultiTech LEGIC readers with the same form factors (PCB modules and desktop readers with housing). During the development of the TWN4 MultiTech 2 LEGIC family, special emphasis has been placed on optimizing the HF performance (13.56 MHz). Compared to the predecessor TWN4 MultiTech LEGIC, the read range could be increased by more than 50% for LEGIC transponders and even doubled for some HF transponders.

TWN4 MultiTech 2 LEGIC M key features include a powerful SDK for writing apps that are executed directly on the module, the possibility to upgrade the firmware in the field, a direct chip-commands support, and a powerful BLE module. Additionally, the module can simultaneously read more than 60 RFID technologies from low (LF) and high frequency (HF) bands, including NFC. This gives the option to select as many of the technologies required instead of being forced to select just a few, like most other readers.

### Special features:

- + Optimized HF and BLE read performance
- + Powerful SDK for writing apps which are executed directly on the reader
- + Support of segment initialization function (LEGIC SM-4500 frontend only)
- + Supports two RFID frequencies: 125kHz and 13.56 MHz
- + Supports quick (re)configuration over network and over wireless interface with TWN4 CONFIG Card
- + Compact form factor for easy integration
- + Firmware update in the field possible
- + Direct chip-commands support
- + CCID and PC/SC 2.01



Elevator



EV Chargers



Access



Shop POS



Fitness  
Equipment



Ticket POS



PC Log-on



Document  
Management



Driver ID



Vending



Parking



Gaming



Locker Locks



Time  
Attendance



Industrial  
PC

## TECHNICAL DATA

FREQUENCY	125 kHz (LF) / 13.56 MHz (HF) / 2.4 GHz (BLE)
ANTENNA(S)	Integrated
DIMENSIONS (L X W X H)	76 mm x 49 mm x 9 mm / 3.0 inch x 1.9 inch x 0.4 inch
POWER	USB: 4.3 V - 5.5 V Generic interface (X1): 3.3 V ± 5% RS-232: requires 5 V external power supply Limited power source according to the safety norms listed in the respective declaration of conformity, short-circuit current < 8 A
CURRENT CONSUMPTION	RF field on: 140 mA typically
TEMPERATURE RANGE	Operating: -25 °C up to +80 °C (-13 °F up to +176 °F) Storage: -40 °C up to +85 °C (-40 °F up to +185 °F)
RELATIVE HUMIDITY	5% to 95% non-condensing
READ / WRITE DISTANCE	LF and HF: Up to 100 mm / 4 inch, depending on environment and transponder BLE: up to several meters/feet
OPERATING MODES (USB)	USB keyboard emulation – USB virtual COM port – CCID / PC/SC 2.01
BLUETOOTH LOW ENERGY	BLE version 5.x
MTBF	500,000 hours
WEIGHT	Approx. 15 g / 0.53 oz (without cable)
SUPPORTED TRANSPONDERS (STANDARD) 13.56 MHZ	<u>ISO 14443A:</u> HID iCLASS DESFire <sup>1)</sup> , HID iCLASS MIFARE Classic <sup>1)</sup> , HID iCLASS SEOS <sup>1)</sup> , LEGIC Advant, NTAG2xx, MIFARE Classic, MIFARE Classic EV1 <sup>2)</sup> , MIFARE DESFire EV1, MIFARE DESFire EV2/EV3 <sup>3)</sup> , MIFARE DESFire Light <sup>4)</sup> , MIFARE Mini, MIFARE Plus S/X, MIFARE Smart MX <sup>5)</sup> , MIFARE Ultralight, MIFARE Ultralight C, MIFARE Ultralight EV1 <sup>2)</sup> , SLE44R35 <sup>5)</sup> , SLE66Rxx (my-d move) <sup>5)</sup> <u>ISO 14443B:</u> Calypso <sup>5)</sup> , CEPAS <sup>5)</sup> , HID iCLASS <sup>1)</sup> , Pico Pass <sup>1)</sup> <u>ISO 15693:</u> EM4x33 <sup>5)</sup> , EM4x35 <sup>5)</sup> , HID iCLASS <sup>1)</sup> , HID iCLASS SE/SR/Elite <sup>1)</sup> , ICODE SLI, LEGIC Advant, M24LR16/64, PicoPass <sup>1)</sup> , SRF55Vxx (my-d vicinity) <sup>5)</sup> , Tag-it <u>ISO 18092 / ECMA-340:</u> NFC Forum Tag 1-5 <sup>6)</sup> , Sony FeliCa <sup>7)</sup> <u>LEGIC Prime:</u> LEGIC Prime <u>LEAF Identity:</u> LEAF <sup>8)</sup>
SUPPORTED TRANSPONDERS (STANDARD) 125 KHZ <sup>9)</sup>	AWID, Cardax <sup>10)</sup> , CASI-RUSCO, Deister <sup>10)</sup> , EM4050, EM4100, EM4102, EM4150, EM4200 <sup>11)</sup> , EM4305, EM4450, EM4550, HITAG 1 <sup>12)</sup> , HITAG 2 <sup>12)</sup> , HITAG S <sup>12)</sup> , ICT <sup>4)</sup> , IDTECK, ISONAS, Keri, Miro, Nedap <sup>10)</sup> , Pyramid, Q5, T5557, T5567, T5577, TITAN (EM4050), UNIQUE, ZODIAC
SUPPORTED TRANSPONDERS (P OPTION)	All standard transponders, G-Prox <sup>10)</sup> , HID 1326 Prox II, HID 1336 DuoProx II, HID 1346 ProxKey III, HID 1386 ISO Prox II, HID 1391 Micro Prox, HID Prox, Indala, ioProx, Nexwatch
SUPPORTED TRANSPONDERS (PI OPTION)	Requires TWN4 SIO Card, all standard transponders, all P option transponders, Calypso Innovatron protocol <sup>5)</sup> , CTS, HID iCLASS, HID iCLASS DESFire/Elite/MIFARE Classic/SE/SEOS/SR, MB89R118/119, NFC Forum Tag 1-5, Pico Pass <sup>13)</sup> , SRI4K, SRI512, SRIX4K, SRT512, Topaz
OS SUPPORT	Windows 7 (32-/64-bit) and higher versions, Linux, Android <sup>4)</sup> , iOS <sup>4)</sup> , MAC OS X <sup>4)</sup>
PERIPHERAL INTERFACES	USB, RS-232, TTL serial (logic level 3.3 V, CMOS, 5 V tolerant), I <sup>2</sup> C, 4 GPIOs

TRANSMISSION SPEED	Host: USB Full speed (12 Mbit/s), RS-232: up to 115,200 baud, HF Air: up to 848 kbit/s
CERTIFICATION NAME	TWN4 MultiTech 2 LEGIC M
CERTIFICATION(S)	CE/RED, FCC, IC, REACH and RoHS-III compliant, and many more <sup>14)</sup>

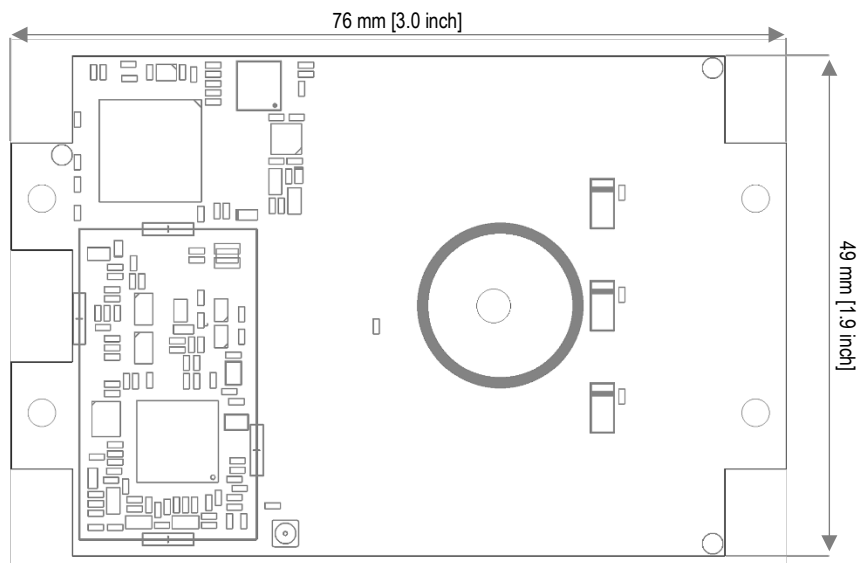
<sup>1)</sup>UID only <sup>2)</sup>r/w enhanced security features on request <sup>3)</sup>supported as part of the EV1 downward compatibility <sup>4)</sup>On request <sup>5)</sup>r/w in direct chip command mode <sup>6)</sup>NFC Forum Tag 1 not supported <sup>7)</sup>UID + r/w public area <sup>8)</sup>AV2 only, requires one free SAM slot for MIFARE SAM AV2 card <sup>9)</sup>125 kHz technology requires a Russian local test and import license from the ministry of Trade and Industry (MINPROMTORC). This license has to be in place before Elatec can accept any order to be shipped to Russia <sup>10)</sup>Hash value only <sup>11)</sup>Only emulation of 4100, 4102 <sup>12)</sup>Without encryption <sup>13)</sup>UID only, read/write on request <sup>14)</sup>More information on request

ORDER CODE(S)	<b>Reader modules with LEGIC SM-4200</b>	
	T4BO-B7-XB	OEM board
	T4BO-B7-XBP	OEM board, P option
	T4BO-B7-XBPI	OEM board, PI option
	<b>Reader modules with LEGIC SM-4500</b>	
	T4BO-B7-5XB	OEM board
	T4BO-B7-5XBP	OEM board, P option
	T4BO-B7-5XBPI	OEM board, PI option

## ACCESSORIES

POWER SUPPLY	PWA-AUS4	Power Supply (AUS)
	PWA-EU4	Power Supply (EU)
	PWA-US4	Power Supply (US)
	PWA-UK4	Power Supply (UK)
CABLES	CAB-B2	USB cable type A 200 cm / 78.74 inch
	CAB-B3	USB cable type A 12 cm / 4.72 inch
	CAB-B4	USB cable type A 45 cm / 17.72 inch
	CAB-B7	USB cable type A 120 cm / 47.24 inch
	CAB-M1	USB cable mini 12 cm / 4.72 inch
	CAB-M2	USB cable mini 25 cm / 9.84 inch
	CAB-R2	RS-232 cable 200 cm / 78.74 inch

## DRAWING



All measures in mm [inch]

### ELATEC GmbH

Zeppelinstr. 1  
82178 Puchheim  
Germany  
P +49 89 552 9961 0  
F +49 89 552 9961 129  
E-Mail: [info-rfid@elatec.com](mailto:info-rfid@elatec.com)  
Website: [elatec.com](http://elatec.com)

### ELATEC Systems GmbH

Schwieberdinger Str. 44  
71636 Ludwigsburg  
Germany  
P +49 7141 309736 0  
E-Mail: [info-rfid@elatec.com](mailto:info-rfid@elatec.com)  
Website: [elatec.com](http://elatec.com)

### ELATEC Inc.

1995 SW Martin Hwy  
Palm City • FL 34990  
USA  
P +1 772 210 2263  
F +1 772 382 3749  
E-Mail: [americas-info@elatec.com](mailto:americas-info@elatec.com)  
Website: [elatec.com](http://elatec.com)

### ELATEC Technology (Shenzhen) LLC

918, Main Building, Tian An Cyber Times  
Tower, No. 6, Tairan Fourth Road, Tian 'an  
Community, Shatou Neighborhood  
Futian District • Shenzhen • China  
P/F +86 755 2394 6014  
E-Mail: [apac-info@elatec.com](mailto:apac-info@elatec.com)  
Website: [elatec.com](http://elatec.com)

ELATEC reserves the right to change any information or data in this document without prior notice. ELATEC declines all responsibility for the use of this product with any other specification but the one mentioned above. Any additional requirement for a specific customer application has to be validated by the customer himself at his own responsibility. Where application information is given, it is only advisory and does not form part of the specification. Disclaimer: All names used in this document are registered trademarks of their respective owners.

## X-ON Electronics

Largest Supplier of Electrical and Electronic Components

*Click to view similar products for [Elatec manufacturer](#):*

Other Similar products are found below :

[TECHTRACER KIT](#) [DEVKIT MULTITECH HF MINI READER](#) [DEVKIT TWN4 MULTITECH NANO LEGIC](#) [T4W2-B01C7-P](#) [T4W2-F01C7](#) [T4W2-F02B6-PI](#) [TWN4 MULTITECH NANO LEGIC 63M C0](#) [T4PK-B02TR6-P](#) [TWN4 MULTITECH SMARTCARD LEGIC 42](#) [USB](#) [TWN4 PALON SQUARE M, P](#) [T4B0-B7-XBP](#) [T43O-B6C0-P](#) [T4DK-FB7BLZ-PI](#) [TWN4 MULTITECH NANO LEGIC](#) [T4W2-F01C7-P](#) [TWN4 MULTITECH-P DT-U20-B](#) [USB WHITE](#) [T4DT-FB3WEL-PI](#) [T4NM-FDA0](#) [T4NM-FDB0](#) [T4PK-B02TR6](#) [TWN4 SLIM LEGIC](#) [TWN4 SLIM ALL INCLUSIVE KIT](#) [TWN4 SLIM P ALL INCLUSIVE KIT](#) [TWN4 SLIM P INDUSTRY KIT](#) [T4BT-FB2BEL7-XBPI](#) [TWN4 MULTITECH HF MINI READER USB](#) [T4B0-B7-XB](#) [T4BO-F7-XBP](#) [T4BT-FB2BEL7-XBP](#) [TWN4 MULTITECH 2 LEGIC M BLE](#) [SM42 OEM PI](#) [T4B0-B7-XBPI](#) [TWN4 MULTITECH 3 M OEM PCB VERSION PI](#) [TWN4 MULTITECH 2 LEGIC M BLE SM42 OEM P](#) [TWN4 MULTITECH SMARTCARD](#) [TWN4 MULTITECH OEM PCB](#) [T4W2-B01C7](#) [T4W2-F02B6](#) [HOPK-B2AEL](#) [CAB-BS3 \(12CM FOR](#) [TWN4 SLIM\)](#) [T43O-B7C0-P](#) [TWN4 SLIM LEGIC P](#) [T4WK-B01EU6](#) [TWN4 MULTITECH 2 LEGIC LF HF VERSION PI](#) [T4BO-F7-XBPI](#) [TWN4 PALON COMPACT WALL VERSION P](#) [TWN4 MULTITECH 2 USB - 12CM](#) [TWN4 MULTITECH 2 HF USB BLACK VERSION I](#) [TWN4 MULTITECH 2 LEGIC BLE SM4200 USB PI](#) [TWN4 MULTITECH 2 BLE DT-U20-W](#) [TECHTRACER LITE LEGIC](#)