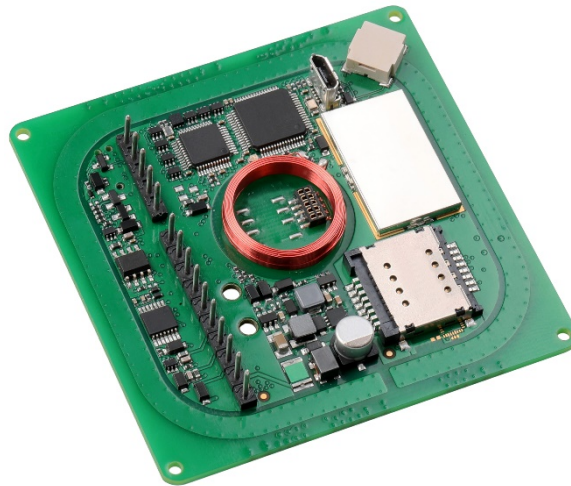


TWN4 PALON SQUARE M

MULTI-TECHNOLOGY RFID READER/WRITER MODULE FOR LF, HF AND NFC



TWN4 Palon Square M
PCB component side (prototype picture)

TWN4 Palon Square M is a versatile OEM PCB for integration into third-party products and devices. It supports enhanced interfaces, especially RS-485. The new single PCB module inherits all advantages and tool support of the ELATEC TWN4 family. Although being a general-purpose PCB module, it is optimized for time attendance and access control.

TWN4 Palon Square M is a multi-technology reader/writer family supporting almost all 125 kHz and 13.56 MHz contactless technologies, including NFC. On-board antennas for HF and LF allow excellent contactless performance.

Special features:

- + Optimized PCB design for OEM integration
- + On-board LF and HF antennas
- + On-board SAM socket (Secure Access Module), up to two slots ID-000 size
- + Interfaces: RS-485 (OSDP protocol optional), Wiegand, Clock/Data, USB, I²C optional
- + Direct chip-commands support
- + Firmware update in the field possible
- + Tamper detection input
- + On-board MEMS gyro sensor
- + Powerful SDK for writing apps which are executed directly on the reader
- + On-board 18 kB flash storage, e.g. for storing user accessible non-volatile data
- + Supports quick (re)configuration over network and over wireless interface with TWN4 CONFIG Card
- + TWN4 Upgrade Card for P and PI options available on request
- + Version with BLE support in preparation



Elevator



EV Chargers



Access



Shop POS

Fitness
Equipment

Ticket POS



PC Log-on

Document
Management

Driver ID



Vending



Parking



Gaming



Locker Locks

Time
AttendanceIndustrial
PC

TECHNICAL DATA

| | |
|---|--|
| FREQUENCY | 125 kHz (LF) / 13.56 MHz (HF) |
| ANTENNA | Integrated |
| DIMENSIONS (L X W X H) | 73 mm x 73 mm x 25.4 mm / 2.87 inch x 2.87 inch x 1.0 inch |
| POWER SUPPLY | 9.0 V - 30 V via connector X1; 4.3 V - 5.5 V via micro USB Limited power source according to IEC 60950-1 or PS2 classified IEC 62368-1, short-circuit current < 8 A |
| CURRENT CONSUMPTION | Operating: typ. 180 mA @12 V; Idle: typ. 50 mA @12 V; Peak typ. 250 mA @12 V |
| TEMPERATURE RANGE | Operating: -25 °C up to +80 °C (-13 °F up to +176 °F) Storage: -40 °C up to +85 °C (-40 °F up to +185 °F) |
| RELATIVE HUMIDITY | 5% to 95% non-condensing |
| READ- / WRITE DISTANCE | Up to 100 mm / 4 inch, depending on OEM environment and transponder |
| OPERATING MODES (USB) | USB keyboard emulation – USB virtual COM port – CCID / PC/SC 2.01 |
| MTBF | 500,000 hours |
| WEIGHT | Approx. 25 g / 0.88 oz, depending on product derivate |
| SABOTAGE DETECTION | Tamper detection input On-board MEMS gyro sensor |
| WIRE CONNECTOR | Connector X1 1x10 pin header, RS-485 Connector X2 1x5 pin header for auxiliary ports/signals Connector X4 2x5 for I ² C and extended ports |
| SIGNALING | One center RGB LED, on reverse side of PCB (optional: up to 5 LEDs for OEM designs); acoustic loudspeaker |
| SUPPORTED TRANSPONDERS (STANDARD) 13.56 MHZ | <u>ISO14443A:</u> LEGIC Advant ¹⁾ , MIFARE Classic EV1 ²⁾ , MIFARE Classic, MIFARE Mini, MIFARE DESFire EV1, MIFARE DESFire EV2 ³⁾ , MIFARE DESFire Light ³⁾ , MIFARE Plus S, X, MIFARE Pro X ⁴⁾ , MIFARE Smart MX ⁴⁾ , MIFARE Ultralight, MIFARE Ultralight C, MIFARE Ultralight EV1 ²⁾ , NTAG2xx, PayPass ⁴⁾ , SLE44R35 ⁴⁾ , SLE66Rxx (my-d move) ⁴⁾ , Topaz <u>ISO14443B:</u> Calypso ⁴⁾ , Calypso Innovatron protocol ⁴⁾ , CEPAS ⁴⁾ , HID iCLASS ¹⁾ , Moneo ⁴⁾ , Pico Pass ⁵⁾ , SRI4K, SRIX4K, SRI512, SRT512 <u>ISO18092 ECMA-340:</u> NFC Forum Tag 1-5, NFC Peer-to-Peer, Sony FeliCa ⁶⁾ , NFC Active and passive communication mode <u>ISO15693:</u> EM4x33 ⁴⁾ , EM4x35 ⁴⁾ , HID iCLASS ¹⁾ , HID iCLASS SE/SR ¹⁾ , ICODE SLI, LEGIC Advant ¹⁾ , M24LR16/64, MB89R118/119, SRF55Vxx (my-d vicinity) ⁴⁾ , Tag-it, PicoPass ⁵⁾ |
| SUPPORTED TRANSPONDERS (STANDARD) 125 KHZ ⁷⁾ | AWID, Cardax, CASI-RUSCO, Deister ⁸⁾ , EM4100, 4102, 4200 ⁹⁾ , EM4050, 4150, 4450, 4550, EM4305 ¹⁰⁾ , FDX-B ¹⁰⁾ , EM4105 ¹⁰⁾ , HITAG 1 ¹¹⁾ , HITAG 2 ¹¹⁾ , HITAG S ¹¹⁾ , ICT ¹⁰⁾ , IDTECK, Isonas, Keri, Miro, Nedap ⁸⁾ , PAC ¹⁰⁾ , Pyramid, Q5, T5557, T5567, T5577, TIRIS/HDX ¹⁰⁾ , TITAN (EM4050), UNIQUE, ZODIAC |
| SUPPORTED TRANSPONDERS (OPTION P) | All Standard Transponders, Cotag, G-Prox ⁸⁾ , HID DuoProx II, HID ISO Prox II, HID Micro Prox, HID ProxKey III, HID Prox, HID Prox II, Indala, ioProx, Nexwatch |
| SUPPORTED TRANSPONDERS (OPTION PI) | Requires TWN4 SIO Card, All Standard Transponders, All Option P Transponders, HID iCLASS, HID iCLASS SE/SR/Elite, HID iCLASS SEOS (Facility Code/PAC) ¹²⁾ |
| OS SUPPORT | Windows 7 (32-/64-bit), 8, 8.1, 10, Linux, Android ¹⁰⁾ , iOS ¹⁰⁾ , MAC OS X ¹⁰⁾ |
| PERIPHERAL INTERFACES | USB, RS485, I ² C ¹⁰⁾ , 3 GPIOs, Clock/Data, Wiegand, OSDP ¹⁰⁾ , 1 tamper detection input |
| TRANSMISSION SPEED | HF Air: up to 848 kbit/s, USB Full speed (12 Mbit/s), Host RS-485: up to 38,400 baud, I ² C 100 kbit/s |
| EXTENSION SLOT | Two SAM slots for ID-000 cards (duplex) For Option PI, plug-in of ELATEC SIO card also consumes one slot. |
| RS-485 CONFIGURATION | RS-485 address configuration and speed settings by Upgrade Card or AppBlaster tool or ex-fab preset; if required, RS-485 termination resistors to be provisioned off-board, externally |

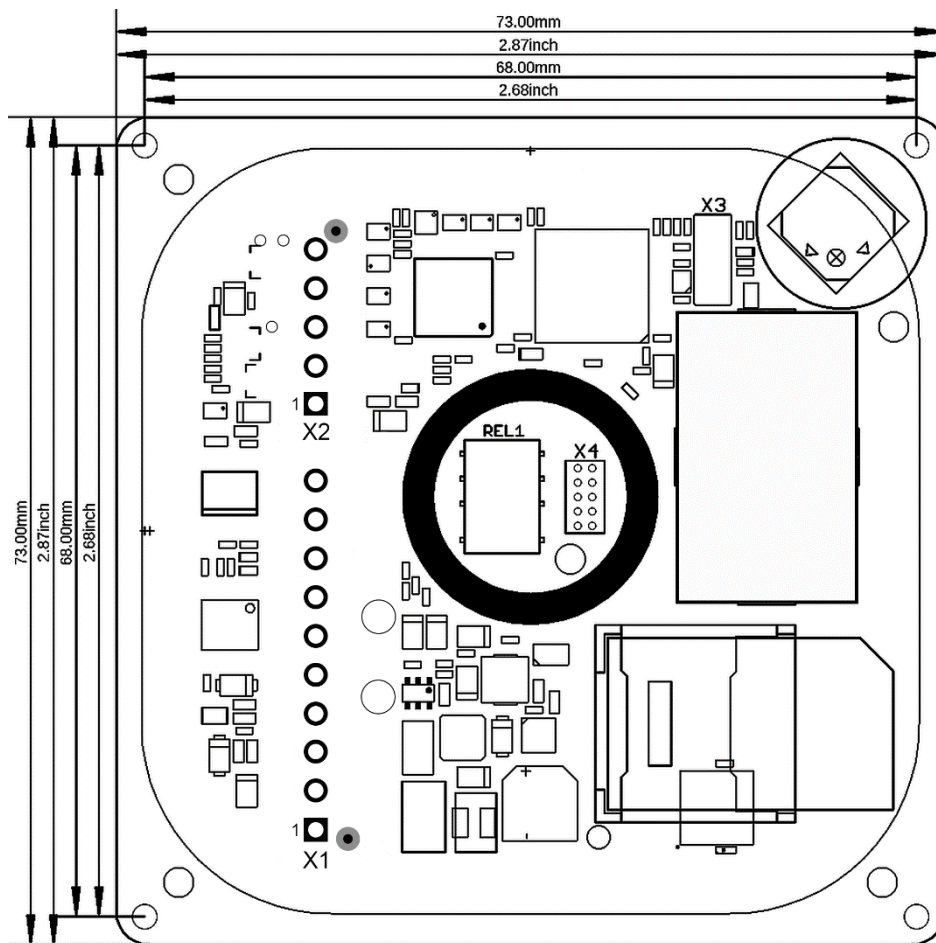
| | | |
|----------------------------|---|---|
| ENVIRONMENT | Special TWN4 Palon Square M versions for potting or coating on request | |
| CERTIFICATION NAME | TWN4 Palon Square M | |
| CERTIFICATION(S) | CE/RED, FCC ¹³⁾ , IC ¹³⁾ , REACH and RoHS-III compliant | |
| IMMUNITY AGAINST EM FIELDS | 10 V/m according to EN 61000-6-2 | |
| ORDER CODE(S) | T4WQ-F1F26 | OEM board with LF/HF, with MEMS sensor |
| | T4WQ-F1F26-P | OEM board with LF/HF, with MEMS sensor, Option P |
| | T4WQ-F1F26-PI | OEM board with LF/HF, with MEMS sensor, Option PI |
| | Customer-specific TWN4 Palon Square M derivatives and configurations on request | |

¹⁾UID only ²⁾r/w enhanced security features on request ³⁾In preparation ⁴⁾r/w in direct chip command mode ⁵⁾UID only, read/write on request ⁶⁾UID + r/w public area ⁷⁾125 kHz technology requires a Russian local test and import license from the ministry of Trade and Industry (MINPROMTORC). This license has to be in place before Elatec can accept any order to be shipped to Russia ⁸⁾Hash value only ⁹⁾Only emulation of 4100, 4102 ¹⁰⁾On request ¹¹⁾Without encryption ¹²⁾UID + PAC (CSN & Facility Code), r/w on request ¹³⁾Planned

ACCESSORIES

| | | |
|------------|----------|---|
| CONNECTORS | CON-0001 | Spring contact with 2 cable guides, 10-pole |
| | CON-0002 | Spring contact with 2 cable guides, 5-pole |
| | CON-0003 | Pluggable connection clamp, 10-pole |
| | CON-0004 | Pluggable connection clamp, 5-pole |

CONNECTOR ASSIGNMENT



ASSIGNMENT

| | X1 PIN | X2 PIN | X4 PIN |
|----|--------------------------|----------------------------|-------------------------------|
| 1 | GND | Relay N.C. Normally Closed | VOUT +5V |
| 2 | VIN 9 – 30 Volt | Relay N.O. Normally Open | GND |
| 3 | Reserved, do not connect | Relay Common | I ² C SDA |
| 4 | Wiegand D0 or DATA, TTL | TAMPER IN, TTL, RFU | I ² C SCL |
| 5 | Wiegand D1 or CLOCK, TTL | GND | OUT, TTL, RFU |
| 6 | IN1, TTL, RFU | | IN, TTL, RFU |
| 7 | IN2, TTL, RFU | | GND |
| 8 | IN3, TTL, RFU | | GND |
| 9 | RS-485 A | | N.C. reserved, do not connect |
| 10 | RS-485 B | | N.C. reserved, do not connect |

ELATEC GmbH

Zeppelinstr. 1
82178 Puchheim
Germany
P +49 89 552 9961 0
F +49 89 552 9961 129
E-Mail: info-rfid@elatec.com
Website: elatec.com

ELATEC Systems GmbH

Schwieberdinger Str. 44
71636 Ludwigsburg
Germany
P +49 7141 309736 0
E-Mail: info-rfid@elatec.com
Website: elatec.com

ELATEC Inc.

1995 SW Martin Hwy
Palm City • FL 34990
USA
P +1 772 210 2263
F +1 772 382 3749
E-Mail: americas-info@elatec.com
Website: elatec.com

ELATEC Technology (Shenzhen) LLC

918, Main Building, Tian An Cyber Times
Tower, No. 6, Tairan Fourth Road, Tian 'an
Community, Shatou Neighborhood
Futian District • Shenzhen • China
P/F +86 755 2394 6014
E-Mail: apac-info@elatec.com
Website: elatec.com

ELATEC reserves the right to change any information or data in this document without prior notice. ELATEC declines all responsibility for the use of this product with any other specification but the one mentioned above. Any additional requirement for a specific customer application has to be validated by the customer himself at his own responsibility. Where application information is given, it is only advisory and does not form part of the specification. Disclaimer: All names used in this document are registered trademarks of their respective owners.

X-ON Electronics

Largest Supplier of Electrical and Electronic Components

Click to view similar products for [Elatec manufacturer](#):

Other Similar products are found below :

[TECHTRACER KIT](#) [T4W2-B01C7-P](#) [T4W2-F02B6-PI](#) [TCP3 KIT STANDARD POE](#) [CAB-BS3 \(12CM FOR TWN4 SLIM\)](#) [T43O-B7C0-P](#)
[TWN4 MULTITECH NANO LEGIC 63M C0](#) [T4PK-B02TR6-P](#) [T4PK-B02TR7-P](#) [TWN4 MULTITECH SMARTCARD LEGIC 42 USB](#)
[T4WK-B01EU6-P](#) [DEVKIT TWN4 MULTITECH NANO LEGIC](#) [ART10499](#) [HHRM-NB2B00](#) [T4W2-F01C7](#) [T4W2-F01C7-PI](#) [T4W2-](#)
[F02B6](#) [T4W2-F02B6-P](#) [TWN4 PALON ONE LEGIC](#) [T43O-B7C0](#) [T4DT-FB3WEL-PI](#) [T4NM-FDB0](#) [T4PK-B01TR7](#) [T4PK-B02TR6](#)
[TWN4 SLIM LEGIC P](#) [TWN4 SLIM PI \(NO CABLE\)](#) [TWN4 SLIM PI ALL INCLUSIVE KIT](#) [TWN4 SLIM PI INDUSTRY KIT](#) [T4WK-](#)
[B01EU6](#) [TWN4 PALON SQUARE M](#) [TWN4 PALON SQUARE M, P](#) [TWN4 MULTITECH 3-I HF PCB WIEGAND, BLE](#) [TWN4 USB](#)
[FRONT READER STANDARD](#) [TWN4 MULTITECH SMARTCARD](#) [TWN4 MULTITECH 2 BLE DT-U20-B](#) [T4W2-B01C7](#) [T4W2-F01C7-](#)
[P](#) [TWN4 MULTITECH 2 BLE IP68](#) [TWN4 MULTITECH-P DT-U20-B USB WHITE](#) [T4NM-FDA0](#) [T4PK-F01TR7](#) [T4DK-FB7BLZ-PI](#)
[NANO MODULE MIFARE](#) [TWN4 MULTITECH 3 HF PCB WIEGAND, BLE](#) [TECHTRACER LITE LEGIC](#) [TWN4 SLIM LEGIC](#) [TWN4](#)
[MULTITECH NANO LEGIC](#) [TWN4 MULTITECH 2 BLE-PI](#) [HOPK-B2AEL](#) [T4BO-F2-I](#)