

REV-NIA N.C. 12480 (was P\$672-119)

12-9-70 ESCO Rev B

ALL VIEWS SHOW SWITCH IN EXTREME COUNTER CLOCKWISE POSITION

DATE 12-5-70 BY GL

CUSTOMER DISTR. SALES NONE

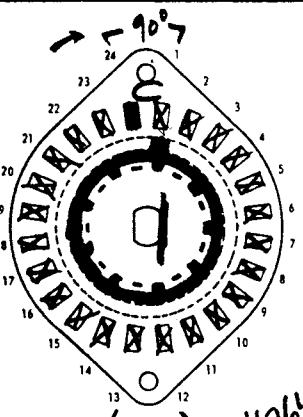
SWITCH NO. D96-499 OLD/PA499

TYPE

2 POLES POS. SECT. 1

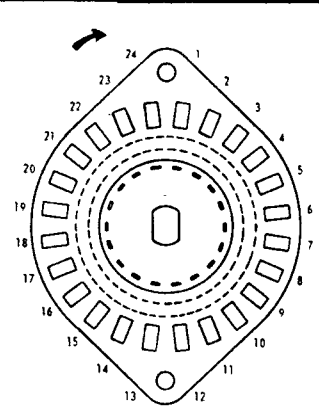
SO		CR		DATE SCHED.	
QTY.	SCHEDULE	DATE	QUANTITY	BALANCE	
BAL. TO RUN					
O.K.					
LAYOUT					

AM'T	PART NAME	PART NO.	DWG. NO.	TOTAL	R	I	L
------	-----------	----------	----------	-------	---	---	---



FRONT

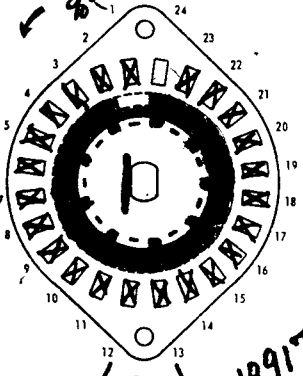
P46264



FRONT

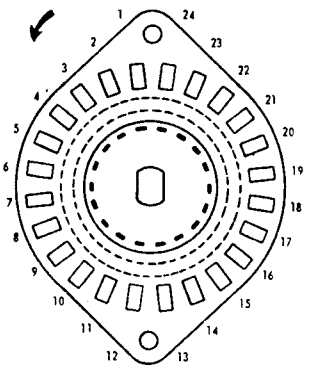
SECTION 1

SECTION

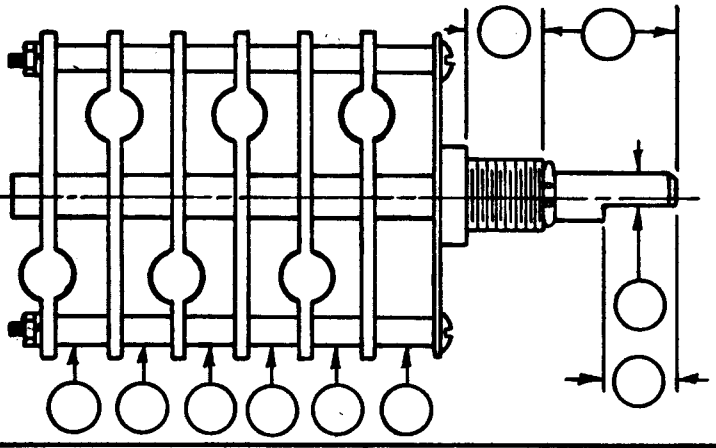


REAR

P48917

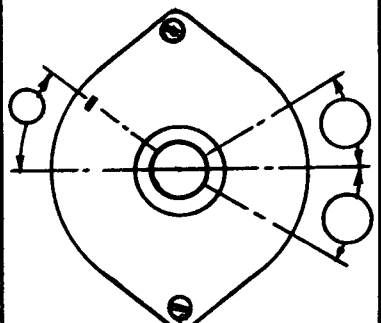


REAR



CHANGES A) EYELETS WERE P25611-00 8-24-'88 P.G.  
 B) Switch No. was P\$672-119, gm, 4-18-91, ECO A1M0017.

LOCATING LUG YES NO



NOTES  
 SECTION ONLY  
 NOTES 1, 14, 26 APPLY

ORIGINAL

## X-ON Electronics

Largest Supplier of Electrical and Electronic Components

*Click to view similar products for [Rotary Switches](#) category:*

*Click to view products by [Electroswitch](#) manufacturer:*

Other Similar products are found below :

[57HS22-02-2-06N](#) [57M22-02B16N](#) [57M22-09A16N](#) [M3786/4-0881](#) [M3786/4-3267](#) [M3786/4-5568](#) [M3786/4-6029](#) [71ESF30-05204N](#)  
[MC06L1NCGF](#) [84986-26](#) [9003K2C003GA](#) [PLR3251](#) [PLR3262](#) [PS3](#) [A0142M2SP](#) [A029303](#) [R2AA4455NNNN](#) [R2BB4455NNNN](#) [DR75-](#)  
[AMSF-10R-B](#) [1703.3201](#) [HW1MS-0202-101](#) [24002-03S](#) [A029101](#) [ACSNO-129-YB-C1014](#) [ACSNO-134-RR-YB-C1005](#) [ACSNO-353-SB-](#)  
[C3016](#) [1825537-4](#) [T505](#) [T505E](#) [24005-03N](#) [H10207RR01Q](#) [M3786/39-4ZC](#) [M3786/4-0002](#) [M3786/4-0630](#) [M3786/4-1028L](#) [M3786/4-](#)  
[1233L](#) [M3786/4-3044](#) [M3786/4-3129](#) [M3786/4-5008L](#) [M3786/4-5256](#) [MC6CX1A502X009](#) [42HS36-01-1-06N](#) [42P36-03B10S](#) [44MBS60-](#)  
[04-2-03N](#) [44MG90-02-1-02N](#) [50KMT90-01-2-02N](#) [51A22-01-1-16S](#) [51CDP30-01PAJN](#) [51KSP30-01D04N](#) [51P30-01B12N](#)